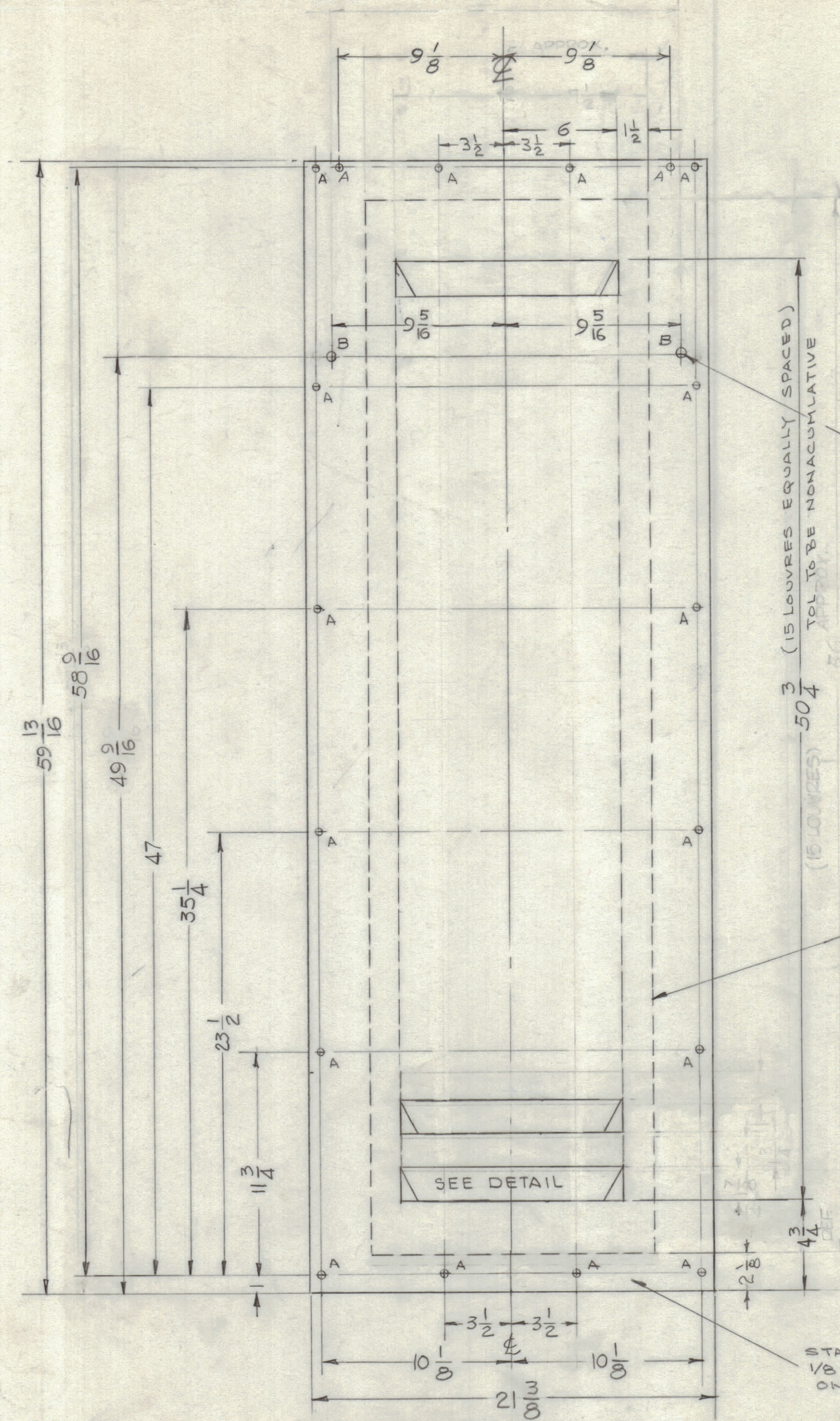


REVISIONS							
ZONE	SYM	DESCRIPTION	DATE	E.M.N. NO.	DRAFT	CHKD	APPD
2	A	ADDED 2" A HOLES & CHANGED DIA.	2-20-64	10916	A.M.		



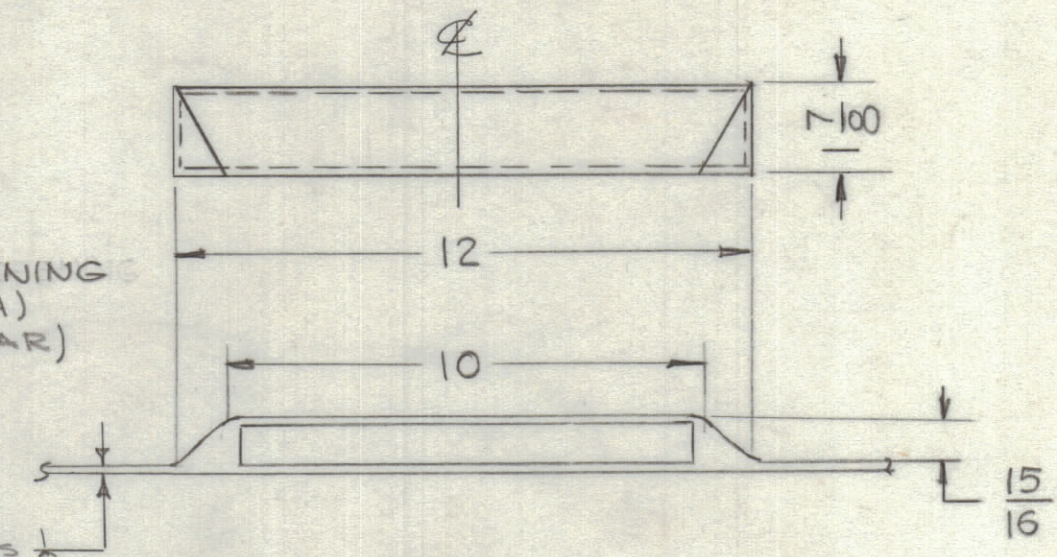
3 (15 LOUVRES EQUALLY SPACED)  
 504 (15 LOUVRES)  
 56

NOTE  
 "B" HOLES MUST BE DRILLED FIRST CENTERED BETWEEN 2<sup>ND</sup> & 3<sup>RD</sup> LOUVRE FROM TOP. THEN MEASURE 49 9/16 DOWN TO ESTABLISH CORRECT BASE. ALL OTHER MACHINING DIM. TAKEN FROM BASE.

HOLE	DESCRIPTION	REQ'D
A	1/4 DIA.	18
B	5/8 DIA.	2

FIBERGLASS SCREENING  
 15X56 (16 MESH)  
 (MOUNTED ON REAR)  
 OFF PANEL

PANEL THICKNESS  
 1/8



LOUVRE DETAIL  
 (15 Req.)

STAMP TMC PART NO.  
 1/8 HIGH BLACK GOTHIC.  
 ON INSIDE OF PANEL

NOTES

2	TER-5000-300U	A-3130
Q'TY./UNIT	MODEL USED ON	ASS'Y. NO.
SCALE	CODE	

THE CONTENTS OF THIS DRAWING ARE THE EXCLUSIVE PROPERTY OF THE TECHNICAL MATERIEL CORP. ITS UNAUTHORIZED USE OR REPRODUCTION IN WHOLE OR IN PART IS STRICTLY FORBIDDEN.

REQ'D.	ITEM	PART NUMBER	DESCRIPTION	SYMBOL
LIST OF MATERIAL				
MATERIAL		THE TECHNICAL MATERIEL CORP. MAMARONECK, NEW YORK		
FINISH		TITLE PANEL, SIDE		
UNLESS OTHERWISE SPECIFIED DIMENSIONS ARE IN INCHES AND INCLUDE CHEMICALLY APPLIED OR PLATED FINISHES		DRAWN G.D.L.	DATE 3-19-63	FINAL APPROVAL
DECIMALS .X ± .05 .XX ± .01 .XXX ± .005		CHECKED aa	DATE	PX-695
FRACTIONS ± 1/64 ANGLES ± 0° 30'		ELECT. DES. sop	DATE	
TOLERANCES		MECH. DES.	DATE	A
			SHEET	REV. LTR.

PX-695 A