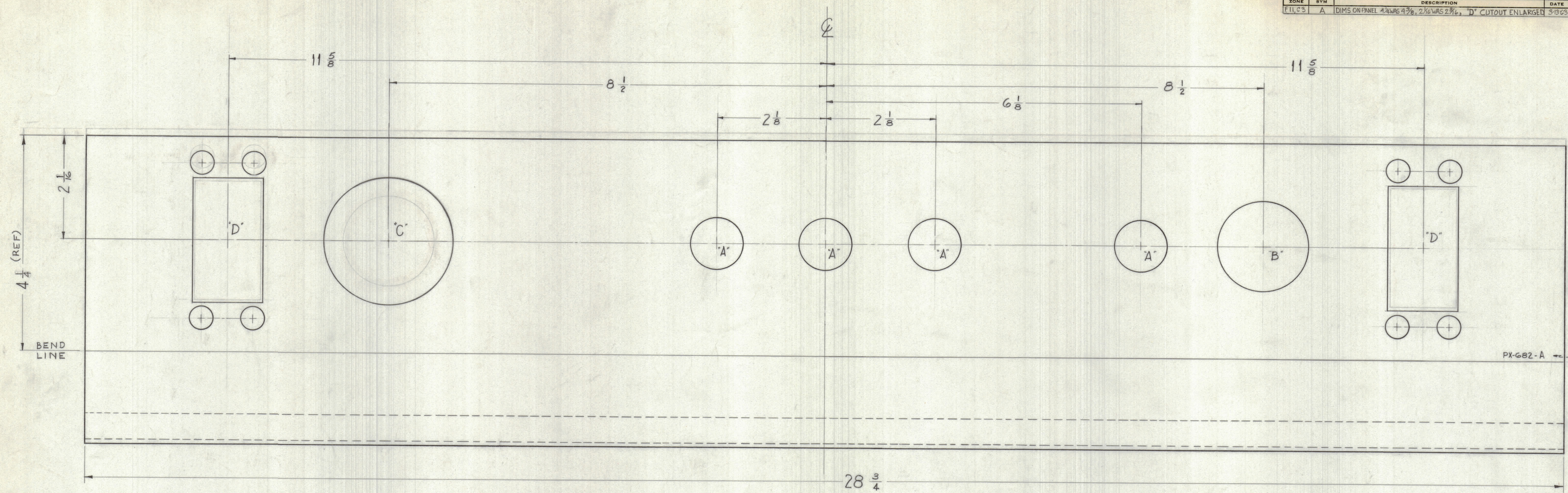
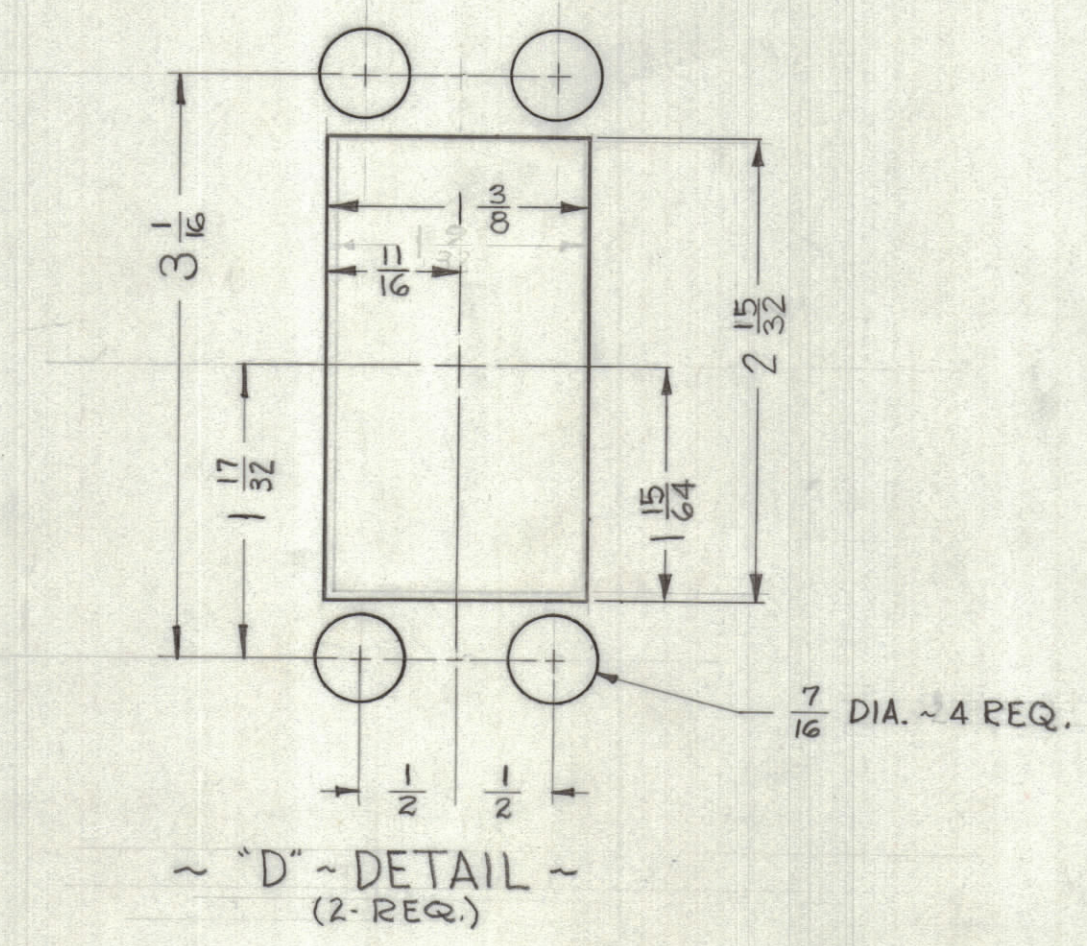


ZONE		BYM	DESCRIPTION	DATE	E.M.N. NO.	DRAFT	CHKD	APPD
F11,23	A		DIMS ON PANEL 4 WAS 4 3/8, 2 WAS 2 3/8, "D" CUTOUT ENLARGED	3-13-63	8586	RC	WJZ	

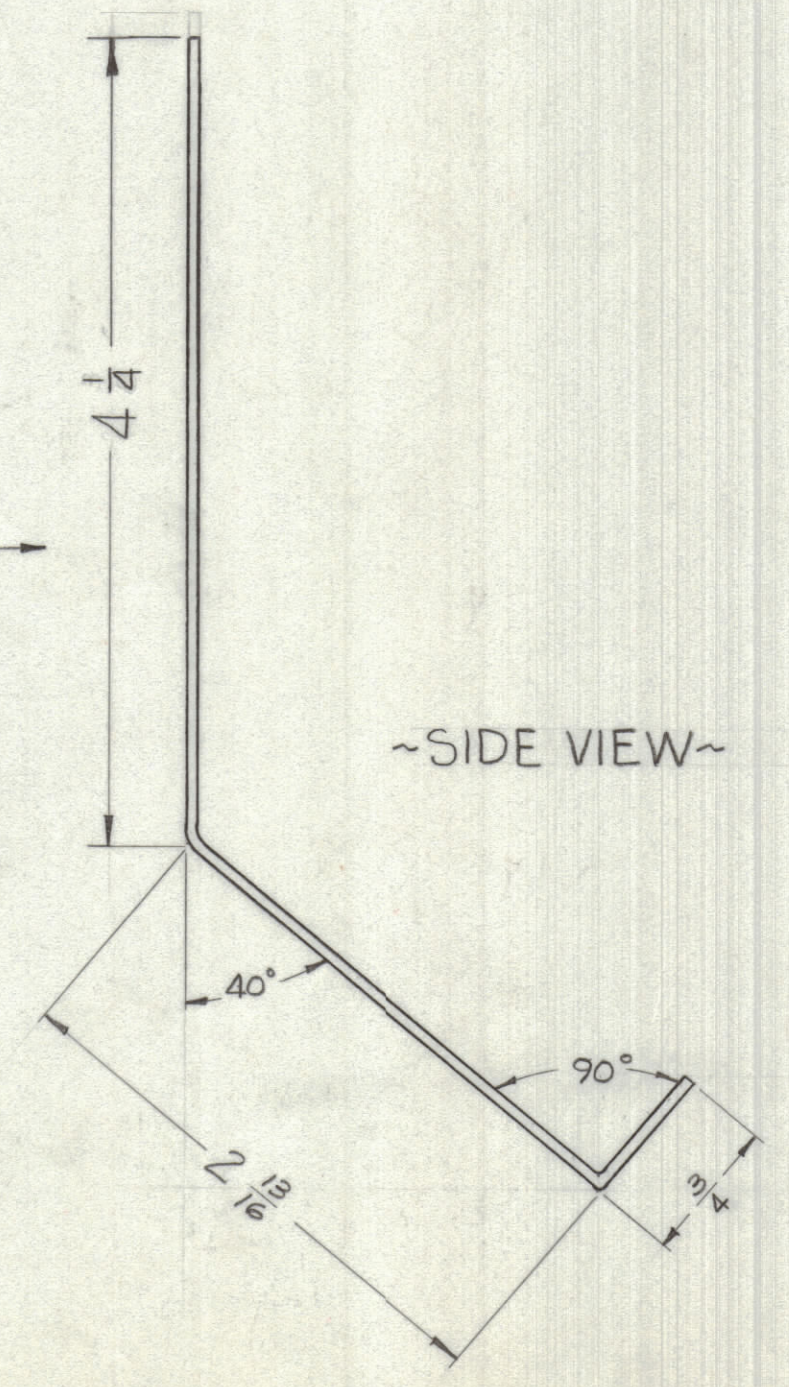


FRONT OF PANEL

LEGEND		
HOLE	DESCRIPTION	REQ.
A	1" DIA.	4
B	1-3/4 DIA.	1
C	2-1/2 DIA.	1



"D" - DETAIL (2-REQ.)



~SIDE VIEW~

NOTICE TO PERSONS RECEIVING THIS DRAWING
 THE TECHNICAL MATERIEL CORPORATION claims proprietary right in the material disclosed hereon. This drawing is issued in confidence for engineering information only and may not be reproduced or used to manufacture anything shown hereon without permission from THE TECHNICAL MATERIEL CORPORATION to the user. This drawing is loaned for mutual assistance and is subject to recall at any time.
 Property of:
 THE TECHNICAL MATERIEL CORPORATION
 MAMARONECK, NEW YORK

REQ'D.	ITEM	PART NUMBER	DESCRIPTION	SYMBOL
LIST OF MATERIAL				
MATERIAL	1/32 PVCA PLASTIC CLEAR		THE TECHNICAL MATERIEL CORP. MAMARONECK, NEW YORK	
FINISH			PROTECTIVE COVER, P.S CONTROL PANEL	

SCALE	MODEL USED ON	ASSY. NO.	DRAWN	DATE	FINAL APPROVAL	DATE
FULL (NO NOT SCALE)	AX-2/3		W. J. Z...	12-3-62		
THE CONTENTS OF THIS DRAWING ARE THE EXCLUSIVE PROPERTY OF THE TECHNICAL MATERIEL CORP. ITS UNAUTHORIZED USE OR REPRODUCTION IN WHOLE OR IN PART IS STRICTLY FORBIDDEN.			CHECKED	DATE		
			W. J. Z...	12-5-62		
			ELECT. DES.	DATE		
			W. J. Z...			

NOTES

PX-682 A

PX-682 A