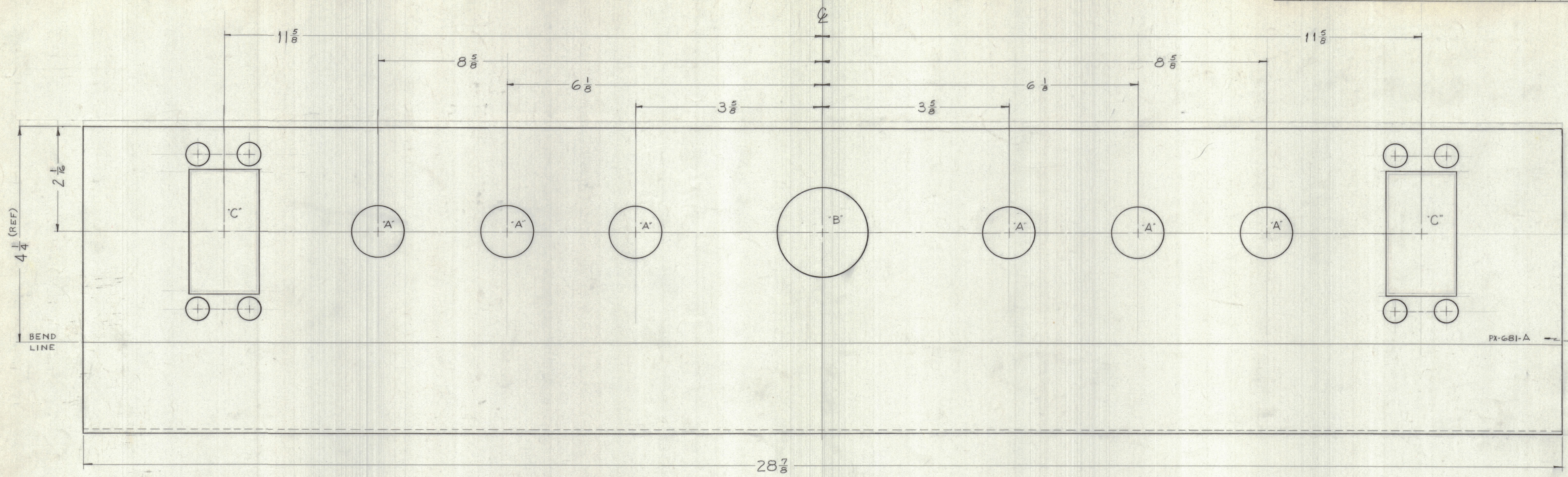
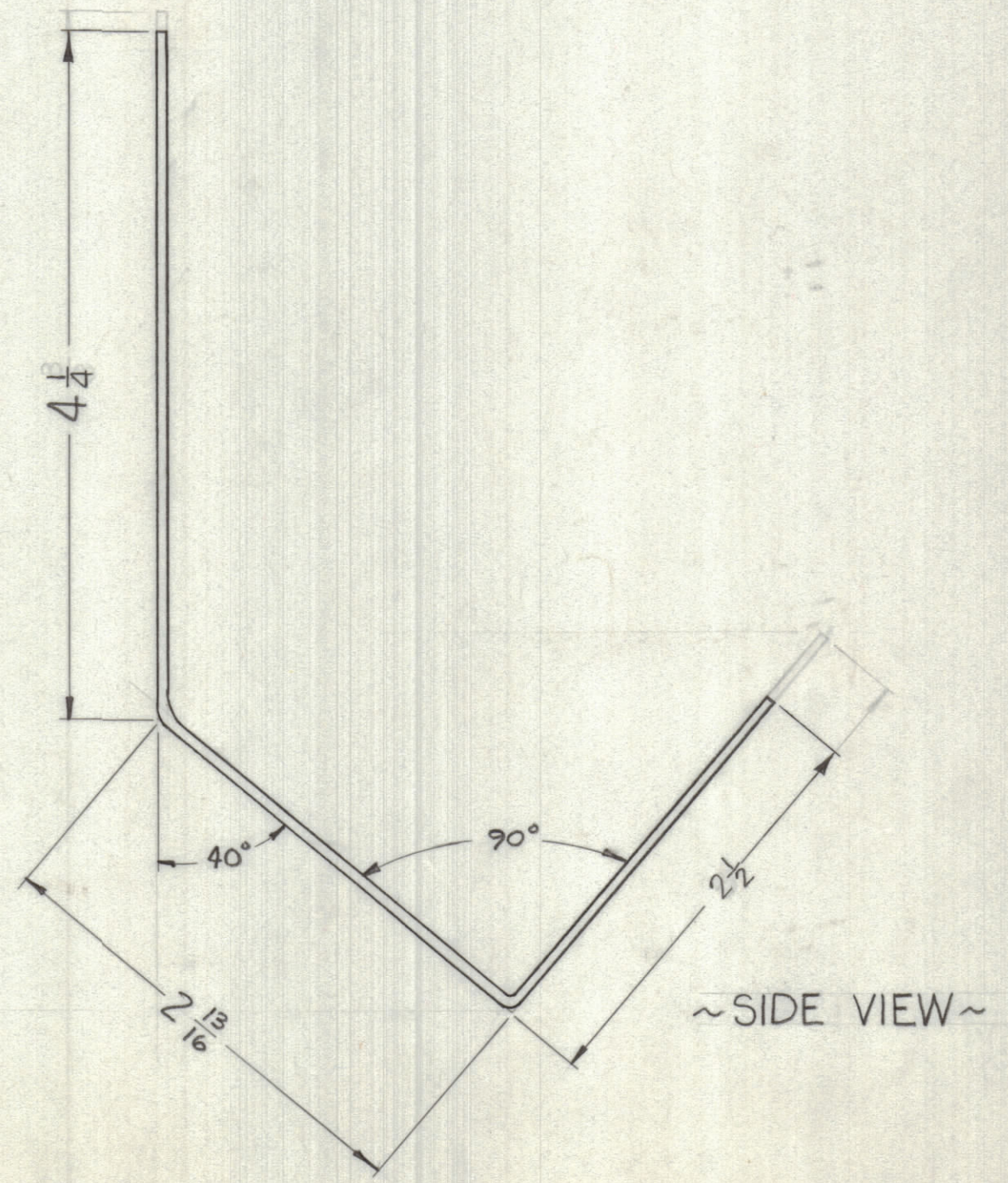
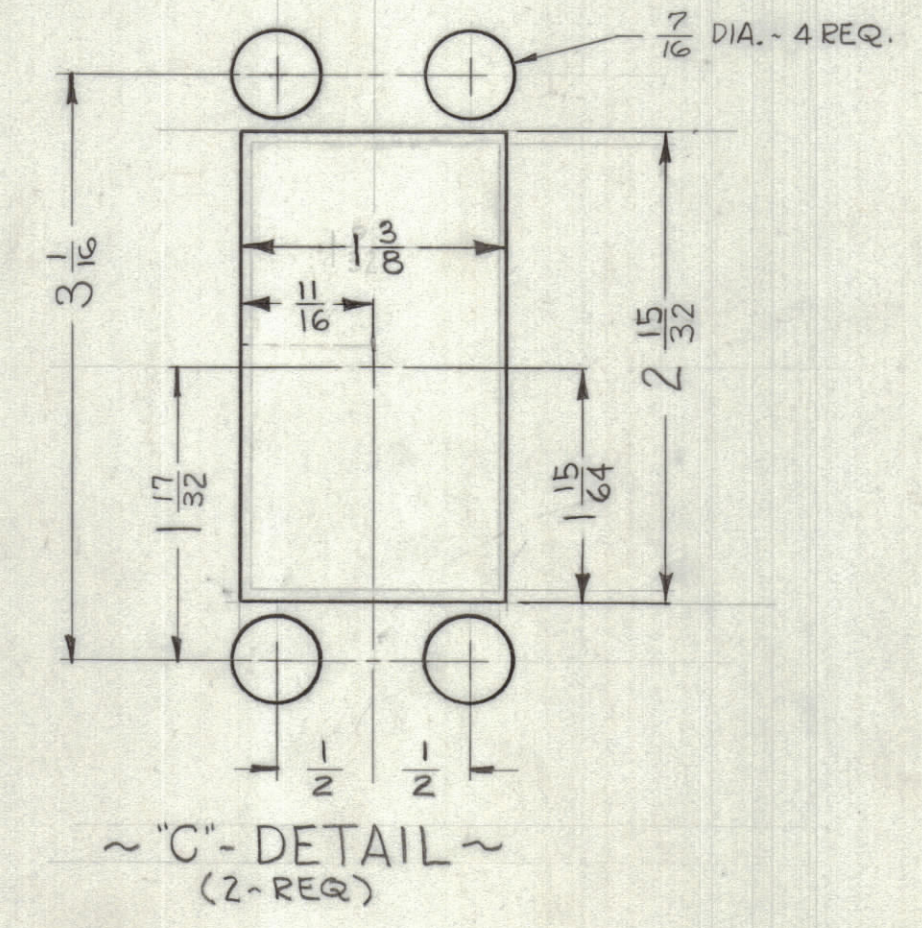


ZONE		SYM	DESCRIPTION	DATE	E.M.N. NO.	DRAFT	CHKD	APPR
F11.88	A		DIMS ON PANEL 4 1/4 WAS 4 3/8, 2 1/8 WAS 2 3/16, ON FLANGE 2 1/2 WAS 3	3-13-62	8556	RC	PR	
C3-4			ENLARGED "C" CUTOUT					



FRONT OF PANEL

LEGEND		
HOLE	DESCRIPTION	REQ.
A	1" DIA.	6
B	1-3/4 DIA.	1
C		



NOTICE TO PERSONS RECEIVING THIS DRAWING
 THE TECHNICAL MATERIEL CORPORATION claims a proprietary right in the material disclosed hereon. This drawing is issued in confidence and is intended for use only in the manufacture of the equipment shown hereon without reproduction, modification or other use without the written permission of THE TECHNICAL MATERIEL CORPORATION. This drawing is loaned for your assistance and is subject to recall at any time.
 Property of
 THE TECHNICAL MATERIEL CORPORATION
 MAMARONECK, NEW YORK

REQD.	ITEM	PART NUMBER	DESCRIPTION	SYMBOL
LIST OF MATERIAL				
MATERIAL	1/32 PVCA PLASTIC CLEAR		THE TECHNICAL MATERIEL CORP. MAMARONECK, NEW YORK	
FINISH			TITLE PROTECTIVE COVER, CONTROL PANEL	
SCALE	FULL (DO NOT SCALE)	MODEL USED ON GPT-40K CODE AX-210	UNLESS OTHERWISE SPECIFIED DIMENSIONS ARE IN INCHES AND INCLUDE CHEMICALLY APPLIED OR PLATED FINISHES	DRAWN 12-4-62 CHECKED 12-3-62 ELECT. DES. MECH. DES.
DECIMALS	.X ± .05 .XX ± .01 .XXX ± .005	FRACTIONS	1/64 ANGLES ± 0° 30'	DATE 12-4-62 DATE 12-3-62 DATE DATE DATE
THE CONTENTS OF THIS DRAWING ARE THE EXCLUSIVE PROPERTY OF THE TECHNICAL MATERIEL CORP. ITS UNAUTHORIZED USE OR REPRODUCTION IN WHOLE OR IN PART IS STRICTLY FORBIDDEN.				REV. LTR.

NOTES

PX-681
A

A

A