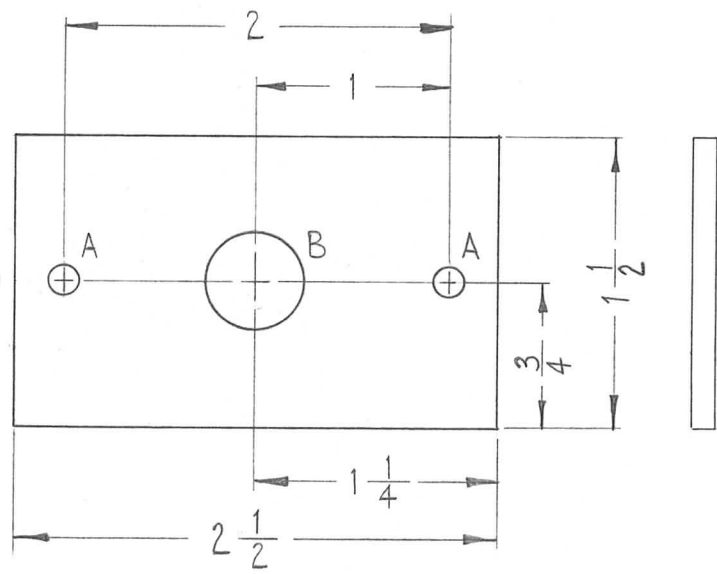


THE CONTENTS OF THIS DRAWING ARE THE EXCLUSIVE PROPERTY OF THE TECHNICAL MATERIEL CORP. ITS UNAUTHORIZED USE OR REPRODUCTION IN WHOLE OR IN PART IS STRICTLY FORBIDDEN.

REQ. PER UNIT 1	USED ON		PX-667	A
	MODEL	ASS'Y. NO.		
	RAK-21B-1	8-7-62		



LEGEND		
HOLE	DESCRIPTION	REQ.
A	5/32 DIA.	2
B	9/16 DIA.	1

							REQ.	ITEM	PART NO.	R. KOHN	DESCRIPTION	SYMBOL	
									1/8 THK.	THE TECHNICAL MATERIEL CORP.			
									STOCK SIZE	MAMARONECK, NEW YORK			
A	① "B" HOLE WAS 1/2" DIA.	9-28-62	7275	48					PHENOLIC	BOARD, MOUNTING, ANTENNA JACK			
SYM	DESCRIPTION	DATE	CH. NO.	DRAFTS	CHECKER	ENG. APP.			MATERIAL				
UNLESS OTHERWISE SPECIFIED: DIMENSIONS ARE IN INCHES		SCALE: FULL (Do Not Scale).					XXXXP			W.A. FRANCO	Hoe	BP	
TOLERANCES ON FRAC. ± 1/64 DEC. ± .005 ANGLES ± 1/2°		MAXIMUM ALLOWABLE TOLERANCES HAVE BEEN DETERMINED AND ANY DEVIATIONS WILL BE CAUSE FOR REJECTION. REMOVE ALL BURRS AND SHARP EDGES					TYPE & TEMPER	HEATTREAT. SPEC.	DRAWN	CHECKED	FINAL APPROVAL		
							NATURAL		RKohn	RK	PX-667	A	
							FINISH & SPEC. NO.		ELEC. DES. APP.	MECH. DES. APP.			