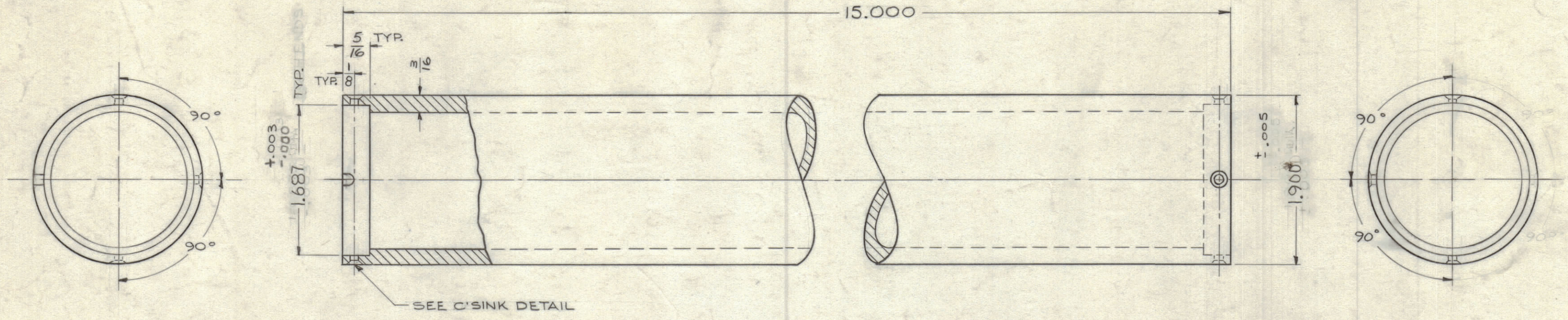
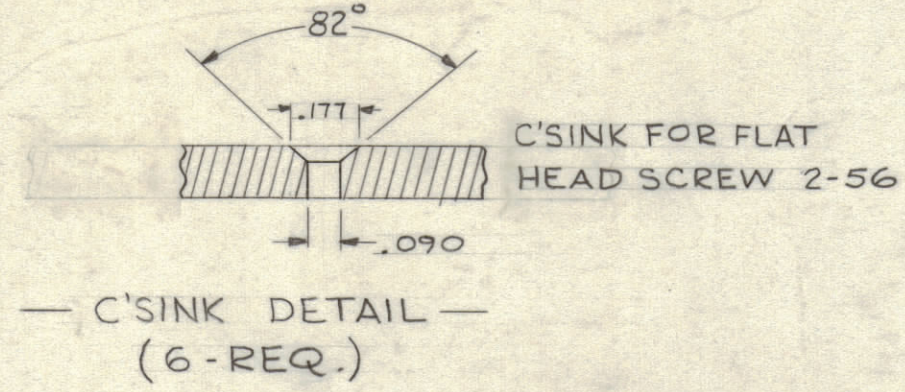


REVISIONS							
ZONE	SYM	DESCRIPTION	DATE	E.M.N. NO.	DRAFT	CHKD	APPD
EG	A	5/16 DIM. WAS V4	12-4-62	7784			



— MATERIAL SPECIFICATION —
CAST ACRYLIC HC-206-CLEAR

NOTICE TO PERSONS RECEIVING THIS DRAWING
THE TECHNICAL MATERIEL CORPORATION claims proprietary right in the material disclosed hereon. This drawing is issued in confidence for engineering information only and may not be reproduced or used to manufacture anything shown hereon without permission from THE TECHNICAL MATERIEL CORPORATION to the user. This drawing is loaned for mutual assistance and is subject to recall at any time.
Property of:
THE TECHNICAL MATERIEL CORPORATION
MAMARONECK, NEW YORK

NOTES

Q'TY./UNIT	MODEL USED ON	ASS'Y. NO.
1	HFR-1	
SCALE	CODE	

THE CONTENTS OF THIS DRAWING ARE THE EXCLUSIVE PROPERTY OF THE TECHNICAL MATERIEL CORP. ITS UNAUTHORIZED USE OR REPRODUCTION IN WHOLE OR IN PART IS STRICTLY FORBIDDEN.

REF LD-1091

REQ'D.	ITEM	PART NUMBER	DESCRIPTION	SYMBOL
KRUZ LIST OF MATERIAL				
MATERIAL		THE TECHNICAL MATERIEL CORP. MAMARONECK, NEW YORK		
SEE NOTE		TITLE DRUM, CYLINDER		
FINISH		SEE NOTE		
UNLESS OTHERWISE SPECIFIED DIMENSIONS ARE IN INCHES AND INCLUDE CHEMICALLY APPLIED OR PLATED FINISHES		DRAWN G. Zencer	DATE 7-26-62	FINAL APPROVAL BP
		CHECKED HQB	DATE 7-26-62	
DECIMALS .X ± .05 .XX ± .01 .XXX ± .005		TOLERANCES	FRACTIONS ± 1/64 ANGLES ± 0° 30'	DATE 7-26-62
			ELECT. DES. HQB	PX-660 A
			MECH. DES. HQB	SHEET
			DATE	REV. LTR.

PX-660 A