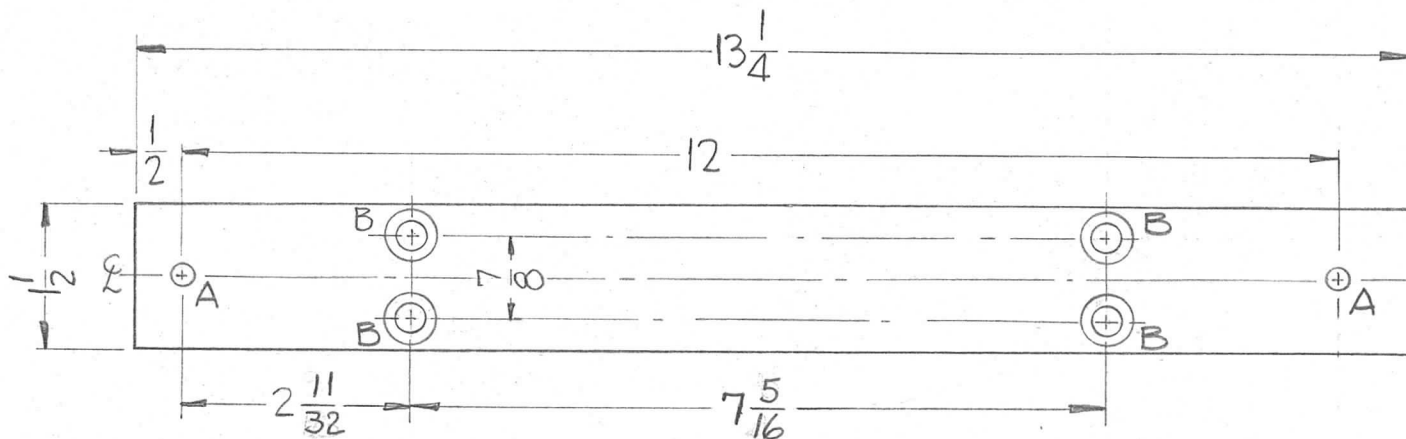


THE CONTENTS OF THIS DRAWING ARE THE EXCLUSIVE PROPERTY OF THE TECHNICAL MATERIEL CORP. ITS UNAUTHORIZED USE OR REPRODUCTION IN WHOLE OR IN PART IS STRICTLY FORBIDDEN.

REQ. PER UNIT	USED ON			PX-634	A
	MODEL	ASS'Y. NO.	DATE		
2	GPT-40K	AX-275	11-4-61		



HOLES REQ
 A ~ 1/4" DIA. ——— 2
 B ~ 5/16" HL. C'BORED 1/32" X
 C'BORED 1/32" X 1/4" DR. ——— 4

REQ.	ITEM	PART NO.	DESCRIPTION			SYMBOL		
		1/2 THK.	THE TECHNICAL MATERIEL CORP.					
		STOCK SIZE	MAMARONECK, NEW YORK					
A	DIM 7-5/16 WAS 7-5/8 DIM 2-11/32 WAS 2-3/16	7-12-62 6876	COIL SUPPORT					
SYM	DESCRIPTION	DATE	CH. NO.	DRAFTS	CHECKER	ENG. APP.		
UNLESS OTHERWISE SPECIFIED: DIMENSIONS ARE IN INCHES TOLERANCES ON FRAC. ± 1/64 DEC. ± .005 ANGLES ± 1/2°		SCALE: HALF	MAXIMUM ALLOWABLE TOLERANCES HAVE BEEN DETERMINED AND ANY DEVIATIONS WILL BE CAUSE FOR REJECTION. REMOVE ALL BURRS AND SHARP EDGES					
		G7	TYPE & TEMPER		HEAT TREAT. SPEC.	DRAWN	CHECKED	FINAL APPROVAL
			FINISH & SPEC. NO.			ELEC. DES. APP.	MECH. DES. APP.	PX-634 A