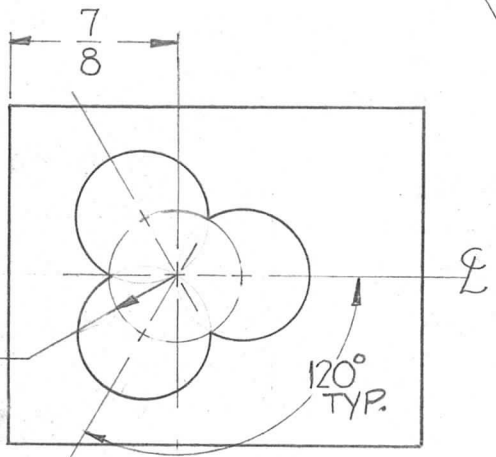
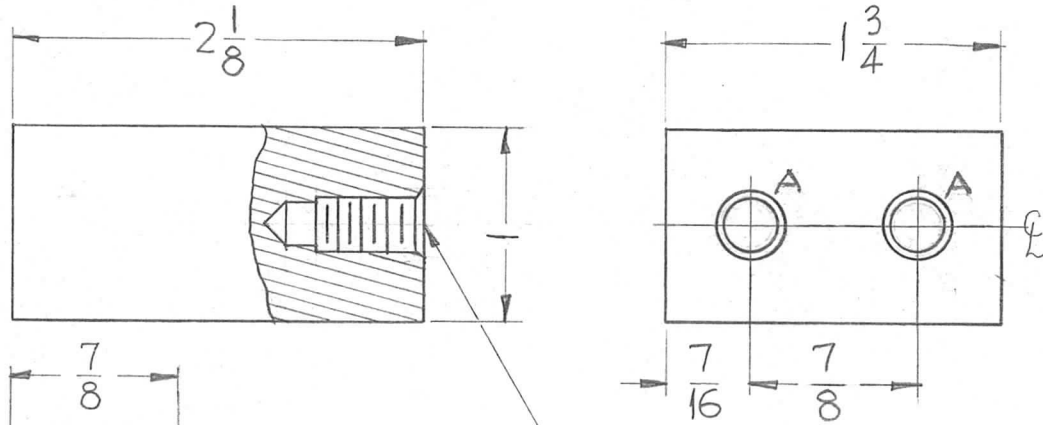


THE CONTENTS OF THIS DRAWING ARE THE EXCLUSIVE PROPERTY OF THE TECHNICAL MATERIEL CORP. ITS UNAUTHORIZED USE OR REPRODUCTION IN WHOLE OR IN PART IS STRICTLY FORBIDDEN.

REQ. PER UNIT	USED ON		
	MODEL	ASS'Y. NO.	DATE
2	GPT-40K	AX-275	11-4-61

PX-624 A



11/32 R. FOR APEX OF  
(3) C'BORE HLS.  
(1 1/16 D. X 3/8 DP.)

① MOUNT ITEM 1 IN ALL 'A' HOLES AS SHOWN AFTER FINISHING

- HOLE LEGEND
- A ~ HOLES TO BE MACHINED AS FOLLOWS: 2-REQ
- 1- 17/64 DRILL (.265) TO .781 DP.
  - 2- 120° C'SINK .30-.33 DIA.
  - 3- TAP .550 MIN DEPTH, USE HELI COIL TAP #4CPB.
  - 4- MOUNT ITEM (1) .039 BELOW SURFACE
  - 5- BREAK OFF DRIVING TANG.

REQ.	ITEM	PART NO.	DESCRIPTION	SYMBOL
2	1	NT-139-SC4-20	INSERT, SCREW THREAD	
1" THK. STOCK SIZE			THE TECHNICAL MATERIEL CORP. MAMARONECK, NEW YORK	
SILICONE GLASS				
MATERIAL			SUPPORT, CORES FILAMENT COIL	
G7				
TYPE & TEMPER			HEAT TREAT. SPEC.	
FINISH & SPEC. NO.			ELEC. DES. APP.	MECH. DES. APP.

SYM	DESCRIPTION	DATE	CH. NO.	DRAFTS	CHECKER	ENG. APP.
A	ITEM (1) ADDED 'A' HOLES WERE 1/4-20 TAP, 1/8 DP.	8-13-62	6990	FS.	Whe	46

UNLESS OTHERWISE SPECIFIED:		SCALE: FULL	
DIMENSIONS ARE IN INCHES		MAXIMUM ALLOWABLE TOLERANCES HAVE BEEN DETERMINED AND ANY DEVIATIONS WILL BE CAUSE FOR REJECTION.	
TOLERANCES ON		REMOVE ALL BURRS AND SHARP EDGES	
FRAC. ± 1/64 DEC. ± .005 ANGLES ± 1/2°			

DD. Man	Whe	OB
aa	aa	PX-624 A