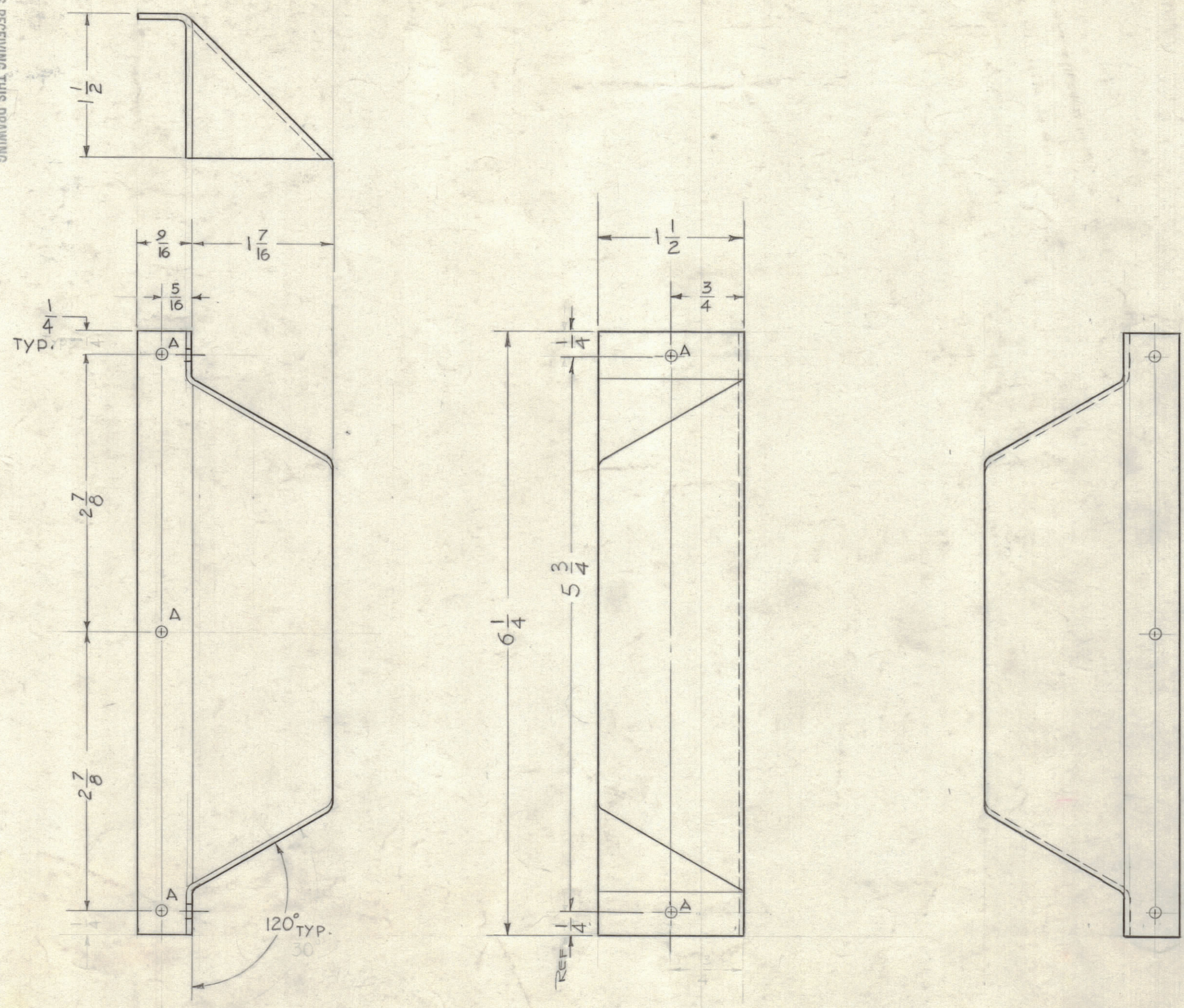


- Hole - REQ.
A ~ .144 DIA. (FOR #8 SELF TAPPING SCREWS) - 5



NOTICE TO PERSONS RECEIVING THIS DRAWING

THE TECHNICAL MATERIEL CORPORATION claims proprietary right in the material disclosed herein. This drawing is issued in confidence for engineering information only and may not be reproduced or used to manufacture anything shown herein without permission from THE TECHNICAL MATERIEL CORPORATION to the user. This drawing is loaned for mutual assistance and is subject to recall at any time.

Property of:
THE TECHNICAL MATERIEL CORPORATION
MAMARONECK, NEW YORK

REF: PX-598

REQ. ITEM	PART NO.	DESCRIPTION	SYMBOL
	1/16	THE TECHNICAL MATERIEL CORP. MAMARONECK, NEW YORK	
	STOCK SIZE	BAFFLE, AIR DUCT	
	FIBER GLASS		
	MATERIAL		
		G.D.L. <i>DM</i> <i>02B</i>	
		DRAWN CHECKED FINAL APPROVAL	
		<i>LB</i> <i>aa</i> <i>PX-611</i>	
		ELEC. DES. APP. MECH. DES. APP. SHEET OF	

REQ. PER UNIT	MODEL	SECTION	ASS'Y. NO.	DATE
1	GPT-40K	AX-244		7-15-61

SYM	ZONE	DESCRIPTION	DATE	CH. NO.	DRAFTS	CHECKER	ENG. APP.
UNLESS OTHERWISE SPECIFIED:			SCALE				
DIMENSIONS ARE IN INCHES			MAXIMUM ALLOWABLE TOLERANCES HAVE BEEN DETERMINED AND ANY DEVIATIONS WILL BE CAUSE FOR REJECTION. REMOVE ALL BURRS & SHARP EDGES				
TOLERANCES ON FRACTIONS ± 1/64			DECIMALS ± .005		ANGLES ± 1/2°		