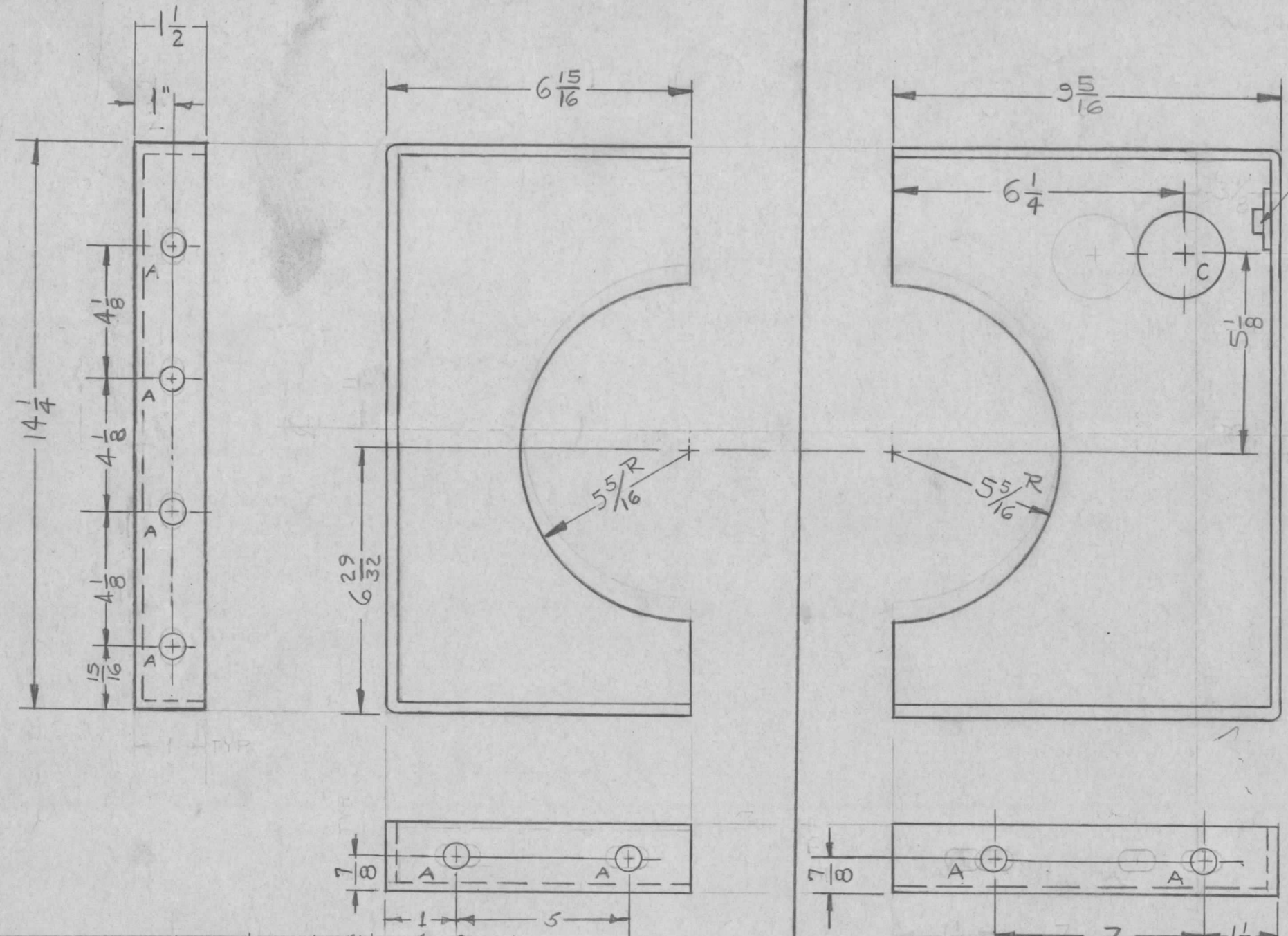
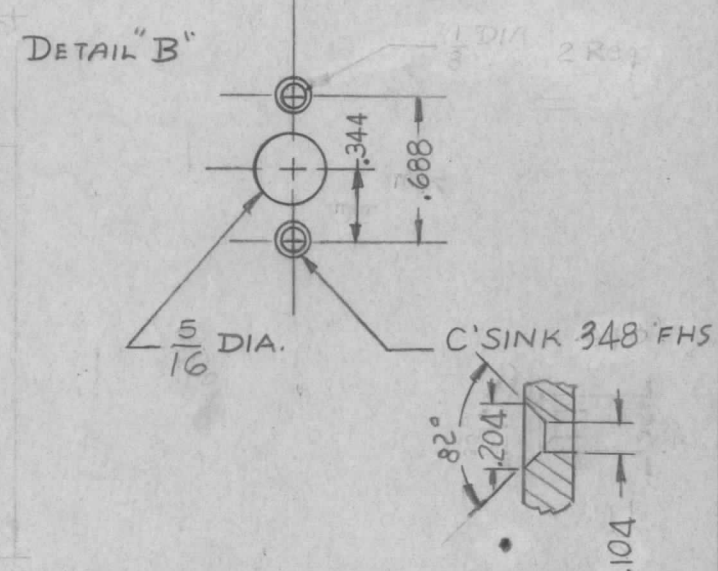
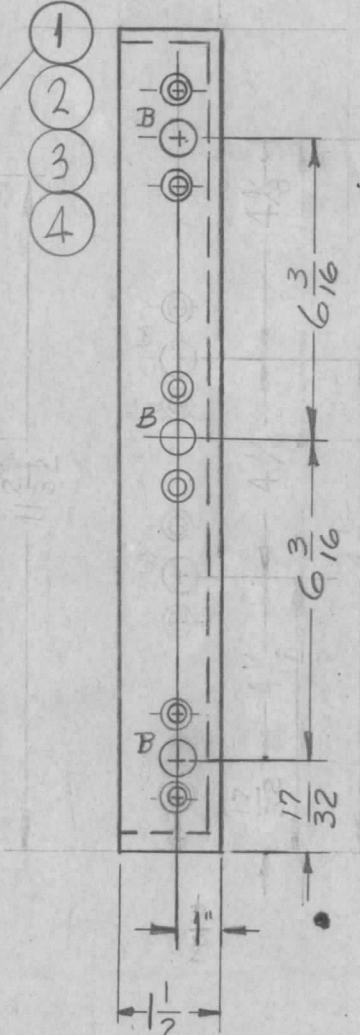


PX 594 G



MOUNT ITEM (1, 2, 3 & 4) IN ALL "B" HOLES AS SHOWN AFTER FINISHING

- A - 3/16 DIA. SLOT 12 REQ
- B - SEE DETAIL 3 REQ
- C - 2 5/8 DIA 1 REQ



NOTICE TO PERSONS RECEIVING THIS DRAWING
 THE TECHNICAL MATERIEL CORPORATION claims proprietary right in the material disclosed herein. This drawing is issued in confidence for engineering information only and may not be reproduced or used to manufacture anything shown hereon without permission from THE TECHNICAL MATERIEL CORPORATION to the user. This drawing is loaned for mutual assistance and is subject to recall at any time.

G	IT. 1 TO 4 ADD, 1 IT. 1 DEL, 348 WAS 440	2-20-67	17829			
F	A HOLES WERE SLOTS	8-16-65	14676			
E	1 ON PX-594-2, "C" DIA. WAS 2 1/4.	2-15-65	13428			
D	4 ON PX-594-2, (1) "B" HOLE RELOCATED	2-28-63	8294			
	3 ON PX-594-2, (1) "B" HOLE DELETED					
	2 ON PX-594-2, 5 5/16 R. WAS 5 3/16					
C	1 ON PX-594-1, 5 3/16 R. WAS 5 3/16					
B	2 ITEM "1" ADDED	11/29/60	3590			
	1 DIM 1/2 WAS 3/8					
A	2 DIM. .688 WAS 3/4, .344 WAS 3/8	11/4/60	3396			
	1 5/16 DIA WAS 3/8					
ISSUE ITEM	CHANGED FROM	DATE	CH. NO.	DRAFTS	CHECKER	ENG. APP.
TOLERANCES		SCALE: (DO NOT SCALE)				
DEC. DIM. ±		MAXIMUM ALLOWABLE TOLERANCES HAVE BEEN DETERMINED AND ANY DEVIATIONS WILL BE CAUSE FOR REJECTION. REMOVE ALL BURRS AND SHARP EDGES				
FRAC. DIM. ± 1/64						
ANGULAR DIM. ±						

PX-594-1

PX-594-2

* NOTE - USED ON PX594-2 ONLY.

* 6	4	NTH0348BNG	NUT, PLAIN, HEX	B
* 6	3	LW503MRN	LOCKWASHER, SPLIT	B
* 6	2	SCFP0348BN5	SCREW, MACHINE	B
* 3	1	NT-117-832-A	NUT, FLOATING ANCHOR	B
REQ. ITEM	PART NO.	DESCRIPTION		SYMBOL
3/32		THE TECHNICAL MATERIEL CORP.		
STOCK SIZE		MAMARONECK, NEW YORK		
FIBERGLASS		BOTTOM FLUE		
MATERIAL				
		RU220		OB
TYPE & TEMPER		HEAT TREAT. SPEC.	DRAWN	CHECKED
TMC GRAY			RB	me
FINISH & SPEC. NO.		ELEC. DES. APP. MECH. DES. APP.		
		PX-594 G		