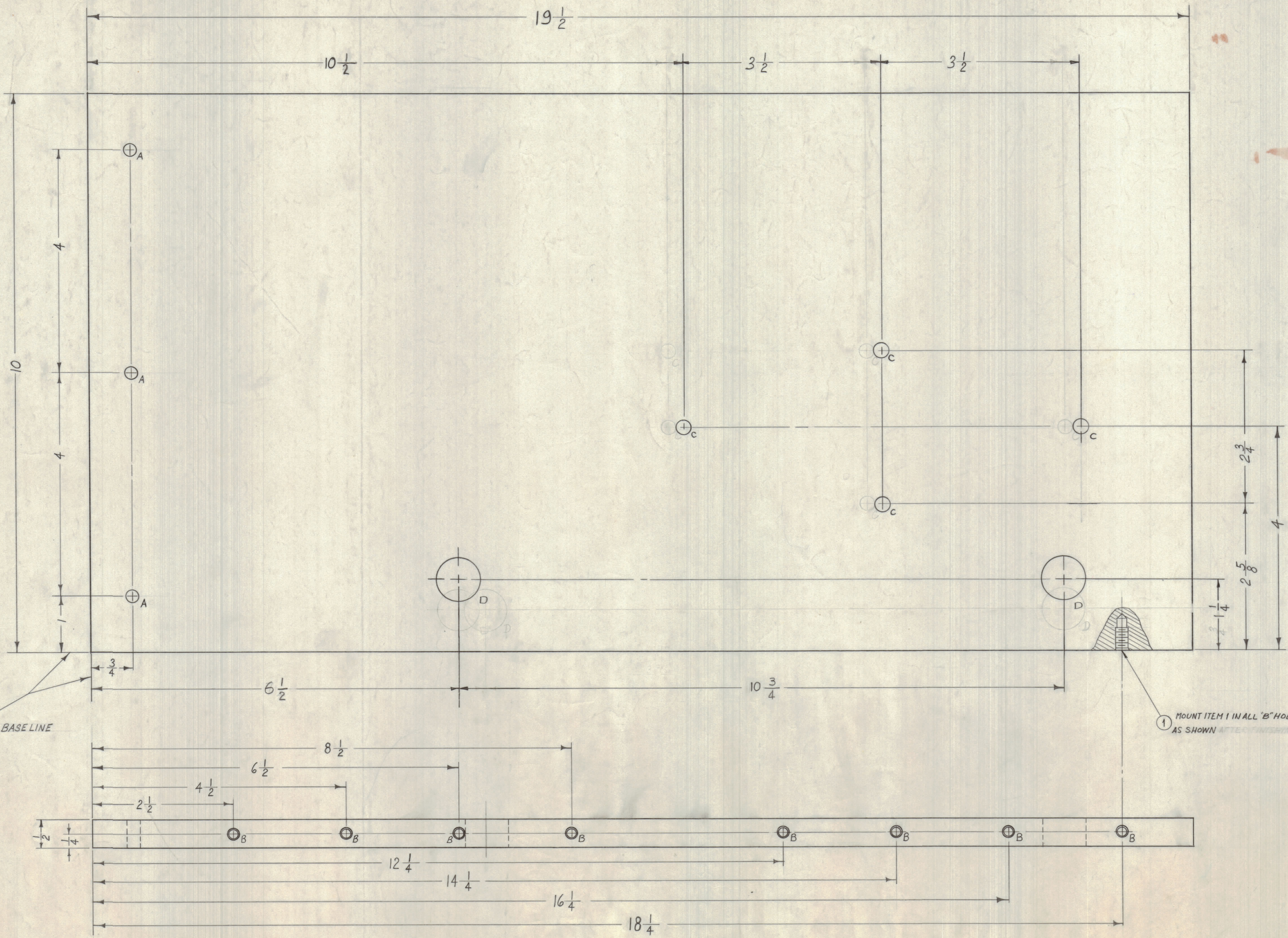


11 10 9 8 7 6 5 4 3 2 1

G  
F  
E  
D  
C  
B  
A

**HOLE LEGEND**  
 A ~ 7/32" DIA. 3 REQ.  
 B ~ HOLES TO BE MACHINED AS FOLLOWS: 8 REQ.  
 1- 13/64" DRILL TO .562 DP.  
 2- 120° C/SINK .22" .25 DIA.  
 3- TAP .410 MIN. DEPTH, USE HELI COIL TAP #3-FPB  
 4- MOUNT ITEM (1) 3/4 TO 1-1/2 PITCH BELOW SURFACE  
 5- BREAK OFF DRIVING TANG  
 C ~ 1/4 DIA. 4 REQ.  
 D ~ 3/4 DIA. 2 REQ.



PX-591  
A

DEC. DIM. ± 1/64	FRAC. DIM. ± 1/64	ANGULAR DIM. ±
TOLERANCES		
SCALE: FULL		
MAXIMUM ALLOWABLE TOLERANCES HAVE BEEN DETERMINED AND ANY DEVIATIONS WILL BE CAUSE FOR REJECTION. REMOVE ALL BURRS AND SHARP EDGES		

NOTICE TO PERSONS RECEIVING THIS DRAWING  
 THE TECHNICAL MATERIEL CORPORATION claims proprietary right in the material disclosed herein. This drawing is issued in confidence for engineering information only and may not be reproduced or used in manufacture anything shown herein without permission from THE TECHNICAL MATERIEL CORPORATION to the user. This drawing is loaned for mutual assistance and is subject to recall at any time.  
 Property of:  
 THE TECHNICAL MATERIEL CORPORATION  
 MAMARONECK, NEW YORK

REQ. PER UNIT	MODEL	SECTION	ASSY. NO.	DATE
2	ACU			3-20-60
USED ON				

B 1	NT-139-SF1-20	INSERT, SCREW THREAD	
REQ. ITEM	PART NO.	DESCRIPTION	SYMBOL
1/2		THE TECHNICAL MATERIEL CORP. MAMARONECK, NEW YORK	
STOCK SIZE		SIDEPLATE, BAND SWITCH	
MATERIAL			
GRADE 7			
TYPE & TEMPER			
HEAT TREAT. SPEC.			
CHECKED		FINAL APPROVAL	
		PX-591	
FINISH & SPEC. NO.			A

11 10 9 8 7 6 5 4 3 2 1