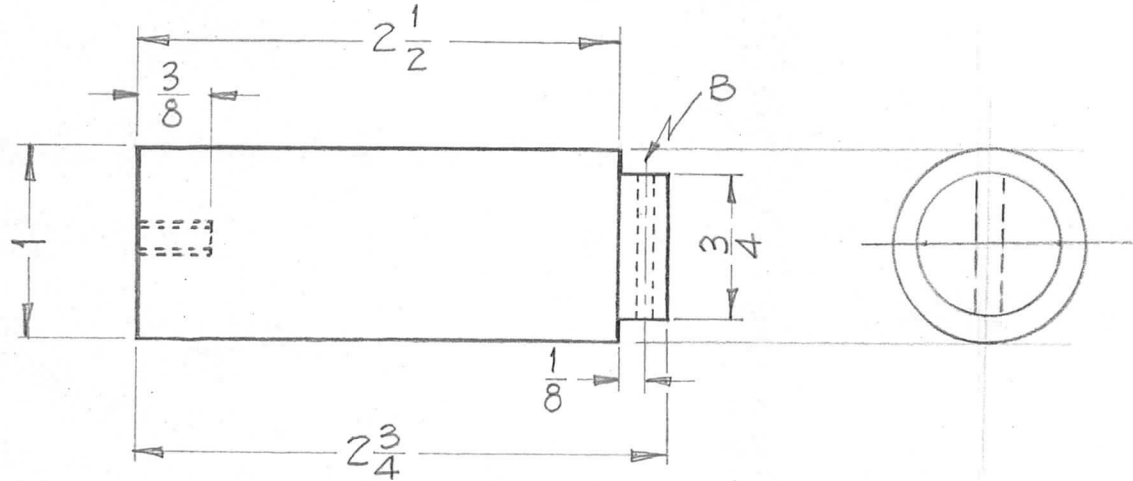
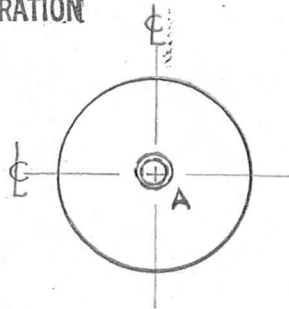


**NOTICE TO PERSONS RECEIVING THIS DRAWING**

THE TECHNICAL MATERIEL CORPORATION claims proprietary right in the material disclosed hereon. This drawing is issued in confidence for engineering information only and may not be reproduced or used to manufacture anything shown hereon without permission from THE TECHNICAL MATERIEL CORPORATION to the user. This drawing is loaned for mutual assistance and is subject to recall at any time.

Property of:  
**THE TECHNICAL MATERIEL CORPORATION**  
 MAMARONECK, NEW YORK



**HOLES**

- |                                   |        |   |
|-----------------------------------|--------|---|
| A ~ Dr. & Tap for 8-32 (3/8 Deep) | Req'd. | 1 |
| B ~ Dr. for 4-40 Self Tap Screw   |        | 1 |

REQ. PER. UNIT	USED ON		
	MODEL	ASS'Y. NO.	DATE
1	GPT-10KP		8-5-60

PX-580

REQ.	ITEM	PART NO.	DESCRIPTION		SYMBOL			
			THE TECHNICAL MATERIEL CORP.					
			MAMARONECK, NEW YORK					
			CAP, END, CORE FORM, LONG					
			STOCK SIZE					
			EPOXY					
			MATERIAL					
			G11					
			TYPE & TEMPER	HEAT TREAT. SPEC.				
			FINISH & SPEC. NO.	ELEC. DES. APP	MECH. DES. APP			
ISSUE	ITEM	CHANGED FROM	DATE	CH. NO.	DRAFTS	CHECKER	ENG. APP.	
TOLERANCES			SCALE: <i>1</i>					
DEC. DIM. ±			MAXIMUM ALLOWABLE TOLERANCES HAVE BEEN DETERMINED AND ANY DEVIATIONS WILL BE CAUSE FOR REJECTION. REMOVE ALL BURRS AND SHARP EDGES					
FRAC. DIM. ± <i>1/64</i>								
ANGULAR DIM. ±								
			DRAWN		CHECKED	FINAL APPROVAL		
			<i>D. J. M. 8-5-60</i>		<i>file</i>	<i>AKB</i>		
						PX-580		