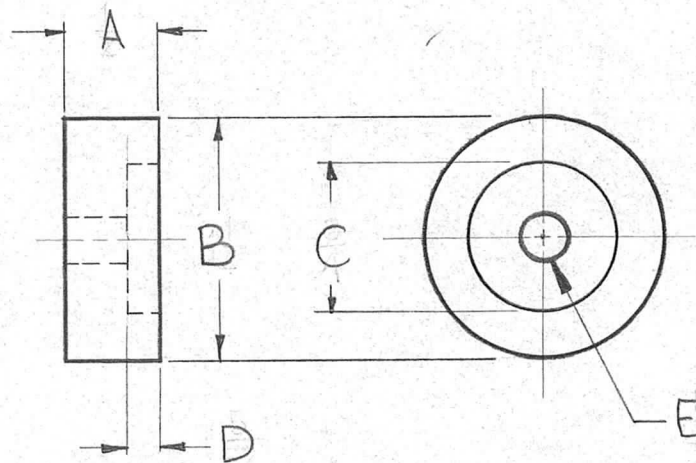


TMC PT/No	A	B	C	D	E
PX533	1/2	1-1/4	3/4	5/32	1/4
PX533-2	5/8	1-1/4	3/4	3/8	1/4
PX533-3	1/4	1-1/4	3/4	5/32	1/4

REQ. PER UNIT	USED ON			PX-533	D
	MODEL	ASS'Y. NO.	DATE		
1	GPT-40K	AX-ZZO	3-7-60		



ISSUE	ITEM	CHANGED FROM	DATE	CH. NO.	DRAFTS	CHECKER	ENG. APP.	REQ. ITEM	PART NO.	DESCRIPTION	SYMBOL		
D		-2D DIM 7/32 TO 3/8	8-18-70	19949	GE	W	W						
C		ADD PX533-3	9-22-66	16862	RME	JCS	RS		1/4" DIA. ROD 1/2" THK.	THE TECHNICAL MATERIEL CORP. MAMARONECK, NEW YORK			
B		PT/No CH ADDED	6-27-66	16461	WHD	JCS	JCS		STOCK SIZE				
A	1	5/32 & 3/4 ADDED	6-29-62	6859	R.T.	JH	JCS		EPOXY	DISK, INSULATOR			
TOLERANCES								SCALE:					
DEC. DIM. ± FRAC. DIM. ± ANGULAR DIM. ±								MAXIMUM ALLOWABLE TOLERANCES HAVE BEEN DETERMINED AND ANY DEVIATIONS WILL BE CAUSE FOR REJECTION: REMOVE ALL BURRS AND SHARP EDGES					
								G 11		D. J. Mann	Jule	RS	
								TYPE & TEMPER		HEAT TREAT. SPEC.	DRAWN	CHECKED	FINAL APPROVAL
								FINISH & SPEC. NO.		ELEC. DES. APP	MECH. DES. APP	PX-533	D