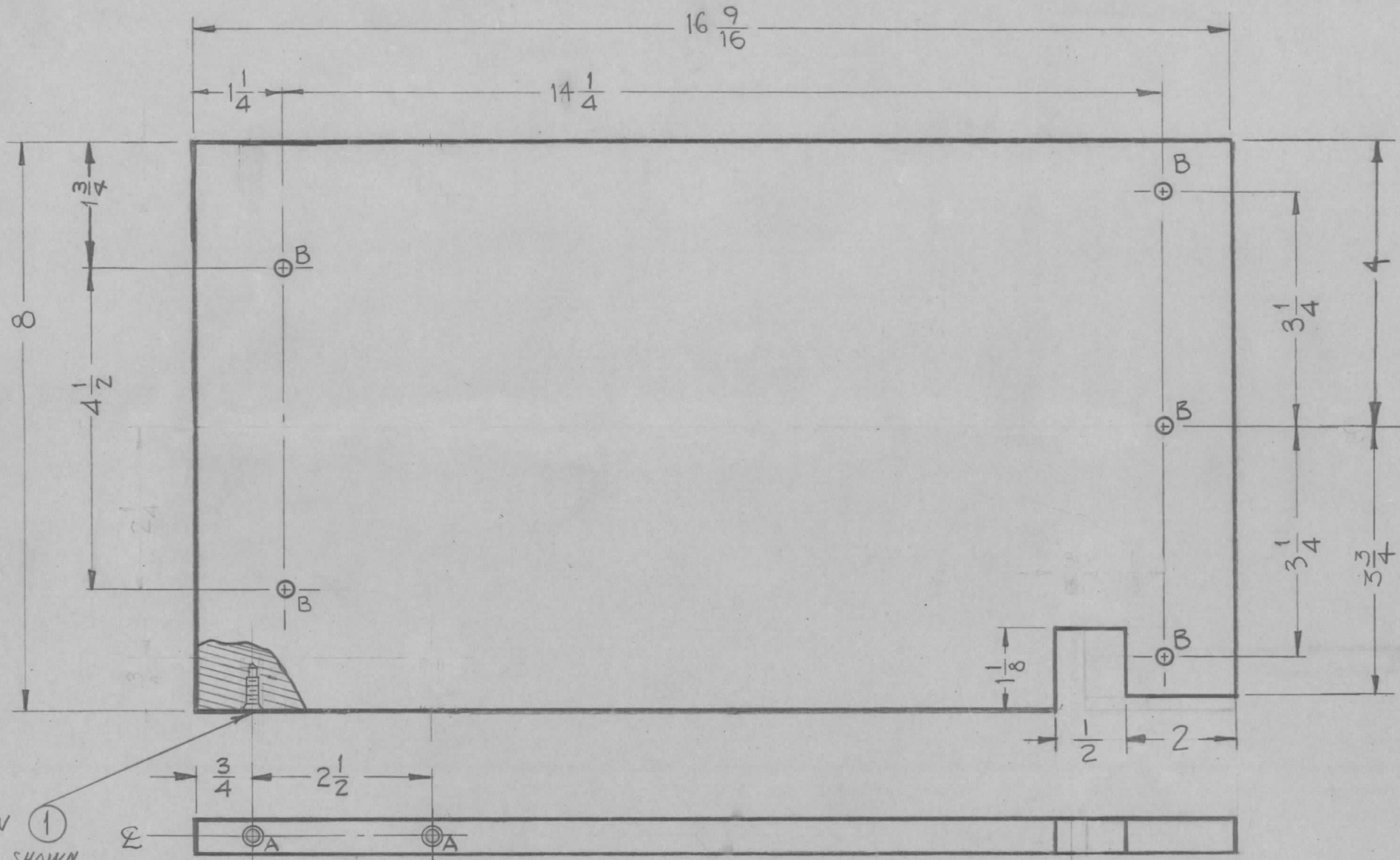


PX 503



- HOLE LEGEND**
- A ~ HOLES TO BE MACHINED AS FOLLOWS 2-REQ
  - 1- 13/64 DRILL (.203) TO .562 DP
  - 2- 120° C'SINK, .22-.25 DIA.
  - 3- TAP .410 MIN. DEPTH, USE HELI COIL TAP #3 FPB
  - 4- MOUNT ITEM (1) 3/4 TO 1-1/2 PITCH BELOW SURFACE.
  - 5- BREAK OFF DRIVING TANG
  - B ~ 7/32 (.218) DIA 5-REQ.

MOUNT ITEM 1 IN  
ALL 'A' HOLES AS SHOWN  
AFTER FINISHING.

F		2 AND 2-1/4 DIM DELE- 1-3/4" 4 ADD. 3 3/4" RELO	8/23/65	14653	LVV.	JCB	MM
E	1	1/2 CUTOUT WAS 3/16 DIM TO 2 OF CUTOUT WAS 2 7/16	3-8-63	8472		YWB	W/B
D	2	'A' HOLES WERE 10-32 TAP	8-10-62	7008	GS.	W/B	W/B
C	1	ITEM 1 ADDED					
C	2	'A' HOLES WERE 10-24 TAP	7-29-61	4971	RU.	JCB	W/B
C	1	'A' HOLES DELETED					
B	1	3 3/4 DIM. ADDED	4-4-60	1994	cus	W/B	W/B
A	1	MATERIAL WAS EPOXY	3-28-60	1956	W/B	W/B	W/B
ISSUE	ITEM	CHANGED FROM	DATE	CH. NO.	DRAFTS	CHECKER	ENG. APP.
TOLERANCES		SCALE: $\frac{1}{16}$					
DEC. DIM. $\pm$		MAXIMUM ALLOWABLE TOLERANCES HAVE BEEN DETERMINED AND ANY DEVIATIONS WILL BE CAUSE FOR REJECTION.					
FRAC. DIM. $\pm$ 1/64		REMOVE ALL BURRS AND SHARP EDGES					
ANGULAR DIM. $\pm$							

2	1	NT 139 SF1-20	INSERT, SCREW THREAD	
REQ. ITEM	PART NO.		DESCRIPTION	SYMBOL
		1/2 THK.	THE TECHNICAL MATERIEL CORP.	
		STOCK SIZE	MAMARONECK, NEW YORK	
		SILICONE GLASS	SUPPORT, CAPACITOR,	
		MATERIAL	SIDE	
G7			DR. M. J. H. L.	JCB
TYPE & TEMPER		HEAT TREAT. SPEC.	DRAWN	CHECKED
			W/B	W/B
FINISH & SPEC. NO.		ELEC. DES. APP. MECH. DES. APP.		
		PX 503 E		

2	AX-209	GPT-40K		1-22-60
REQ. PER UNIT	MODEL	PROJECT NO.	ASS'Y. NO.	DATE
USED ON				