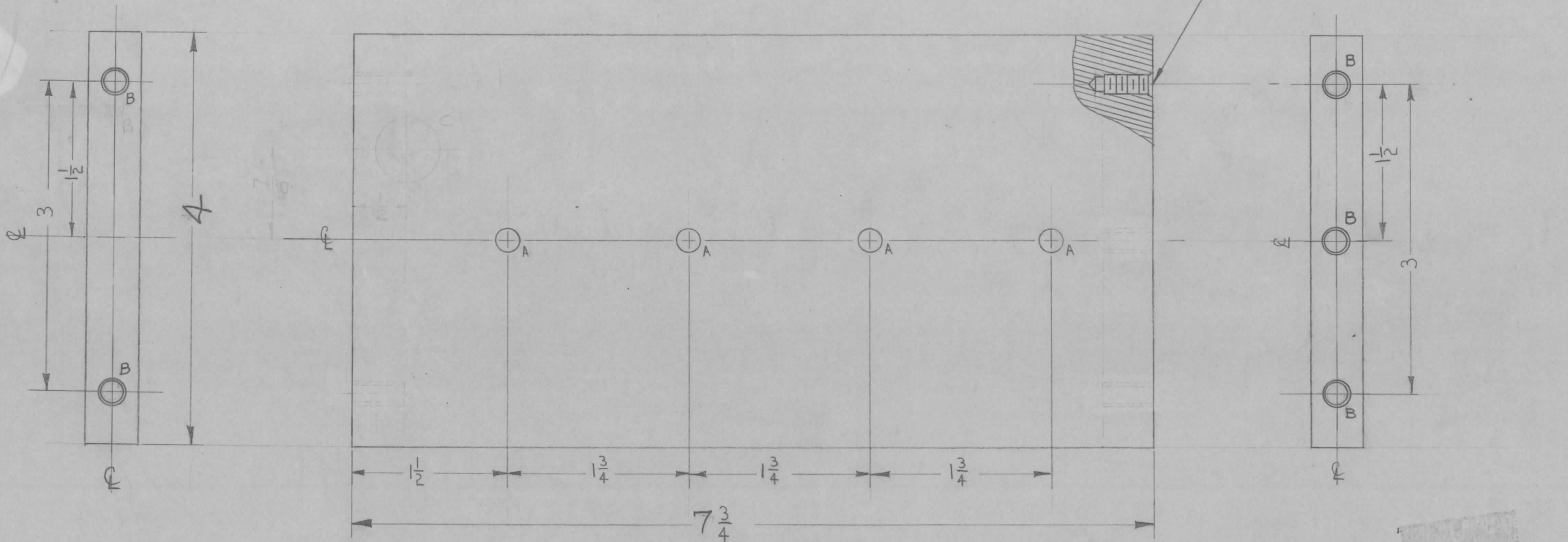


PX-499 B



1 MOUNT ITEM 1 IN ALL "B" HOLES AS SHOWN AFTER FINISHING

HOLE LEGEND

- A - 1/32 (.218) DIA. 4-REQ
- B - HOLES TO BE MACHINED AS FOLLOWS: 5 REQ.
  - 1- 13/64 DRILL (.203) TO .562 DP
  - 2- 120° C'SINK .22-.25 DIA.
  - 3- TAP .410 MIN DEPTH, USE HELI COIL TAP #3 FPB.
  - 4- MOUNT ITEM(1) 3/4 TO 1-1/2 PITCH BELOW SURFACE
  - 5- BREAK OFF DRIVING TANG

REF: LD-671(2)

ISSUE ITEM	CHANGED FROM	DATE	CH. NO.	DRAFTS	CHECKER	ENG. APP.
B 2	"B" HOLES WERE DR & TAP 10-32 x 1/2 DP	8-10-62	7008	GS	Wde	16
1	ITEM 1 ADDED					
A 1	"C" HOLE DELETED	2-11-60		MF		28

TOLERANCES SCALE: FULL

DEC. DIM. ±  
FRAC. DIM. ± 1/64  
ANGULAR DIM. ±

MAXIMUM ALLOWABLE TOLERANCES HAVE BEEN DETERMINED AND ANY DEVIATIONS WILL BE CAUSE FOR REJECTION. REMOVE ALL BURRS AND SHARP EDGES

1	AX-212	GPT-40K		1/13/60
REQ. PER UNIT	MODEL	PROJECT NO.	ASS'Y. NO.	DATE
USED ON				

5	1	NT-139-SFI-20	INSERT, SCREW THREAD	
REQ. ITEM	PART NO.		DESCRIPTION	SYMBOL
1/2 THICK			THE TECHNICAL MATERIEL CORP. MAMARONECK, NEW YORK	
STOCK SIZE				
PHENOLIC			BOARD, RESISTOR MTG., SMALL (CROWBAR DRAWER)	
MATERIAL				
XXX P LAMINATE			MF	Wde
TYPE & TEMPER			HEAT TREAT. SPEC.	FINAL APPROVAL
NATURAL			Em	RLK
FINISH & SPEC. NO.			ELEC. DES. APP.	MECH. DES. APP.
				PX-499 B