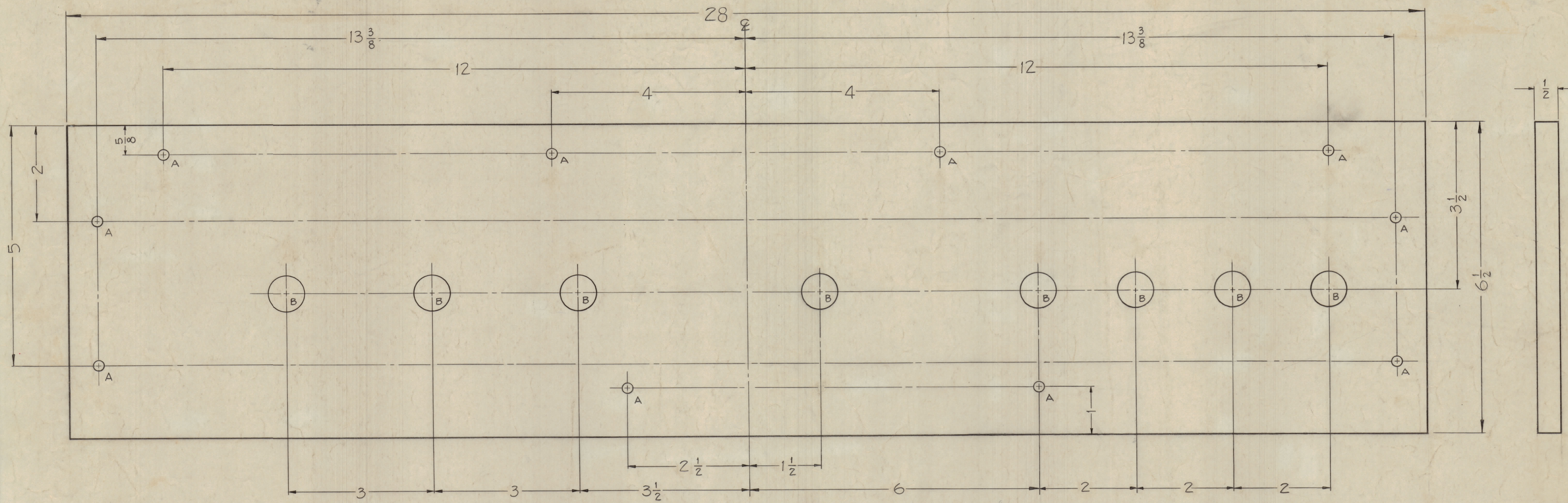


IF IT IS FOUND DESIRABLE TO CHANGE ANY TOLERANCE OR OTHER DETAIL SPECIFIED ON THIS DRAWING NOTIFY THE PURCHASER PROMPTLY.
 MAXIMUM ALLOWABLE TOLERANCES HAVE BEEN DETERMINED AND DEVIATIONS WILL BE CAUSE FOR REJECTION. REMOVE ALL BURRS AND SHARP EDGES

NOTICE TO PERSONS RECEIVING THIS DRAWING

THE TECHNICAL MATERIEL CORPORATION claims proprietary right in the material disclosed herein. This drawing is issued in confidence for engineering information only and may not be reproduced or used to manufacture anything shown hereon without permission from THE TECHNICAL MATERIEL CORPORATION to the user. This drawing is loaned for mutual assistance and is subject to recall at any time.

Property of:
 THE TECHNICAL MATERIEL CORPORATION
 MAMARONECK, NEW YORK



PX-496 C

~ HOLES ~
 A ~ 7/32 (.218) DIA. 10 Req.
 B ~ 3/4 (.750) DIA. 8 Req.

* FUNGUS & MOISTURE PROOF ALL SURFACES AFTER MACHINING, IN ACCORDANCE WITH TMC SPECIFICATION S-113

ISSUE	ITEM	CHANGED FROM	DATE	CH. NO.	DRAFTS	CHECKER	ENG. APP.
C	1	S-113 NOTE ADDED	4-13-61	11186	LSB	[Signature]	[Signature]
B	1	* & NOTE ADDED	1-26-60	10530	[Signature]	[Signature]	[Signature]
A	2	MAT'L WAS PHENOLIC XXXP	11-28-42	7544	[Signature]	[Signature]	[Signature]
	1	TYPE & TEMPER WAS LINEN BASE					

SCALE: FULL

DRILL, PUNCH, COMMERCIAL STOCK SIZES AND MANUFACTURERS TOLERANCES ARE NOT INCLUDED.

ALL DEC. DIM. ± 1/64
 OTHERS ANGULAR DIM. ±

1	AP-105	GPT 40K		1-11-60
REQ PER UNIT	MODEL	PROJECT NO.	ASSY. NO.	DATE
				USED ON

REQ. ITEM	PART NO.	DESCRIPTION	SYMBOL
	1/2 THICK	THE TECHNICAL MATERIEL CORP. MAMARONECK, NEW YORK	
	STOCK SIZE		
	PHENOLIC	BOARD, REAR	
	MATERIAL	H.V. CONTACTS	
	WEIGHT PER PC.		
	L.E.	John C. Biele	[Signature]
	TYPE & TEMPER		
	DRAWN	[Signature]	[Signature]
	ELEC. DES. APP.		
	MECH. DES. APP.		
	CHECKED		
	HEAT TREAT. SPEC.		
	NATURAL *		
	FINISH & SPEC. NO.		
			PX-496 C