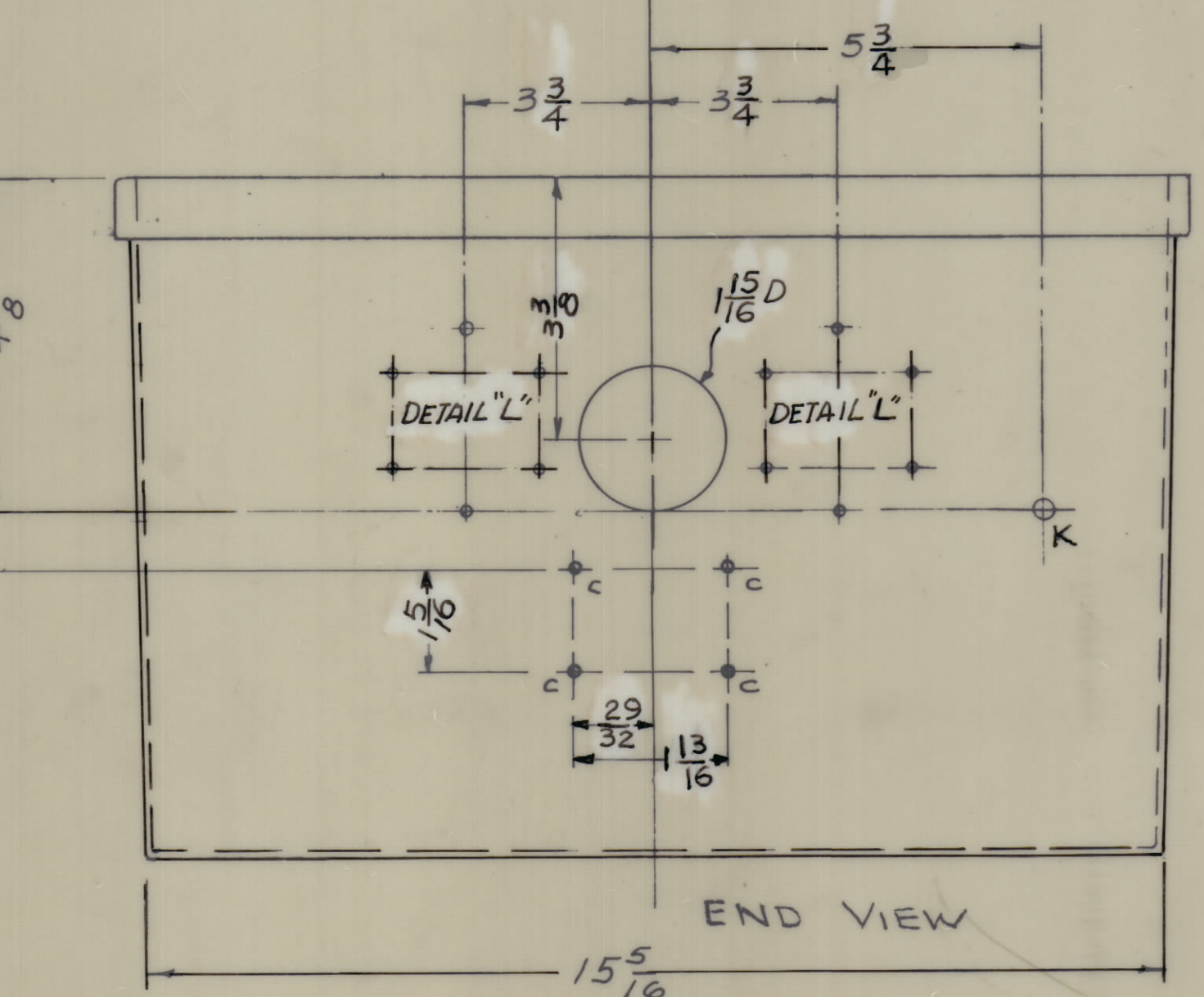
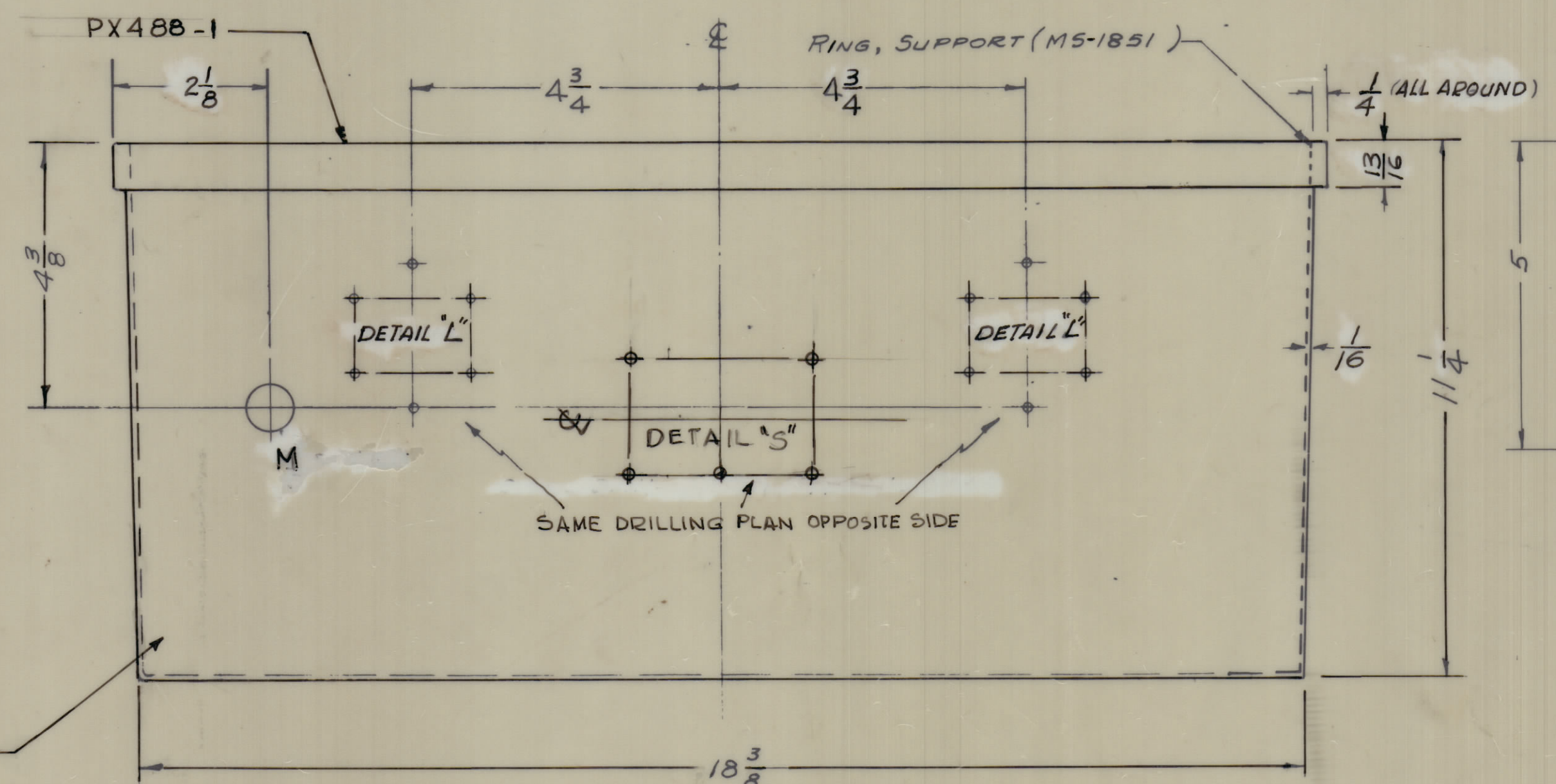
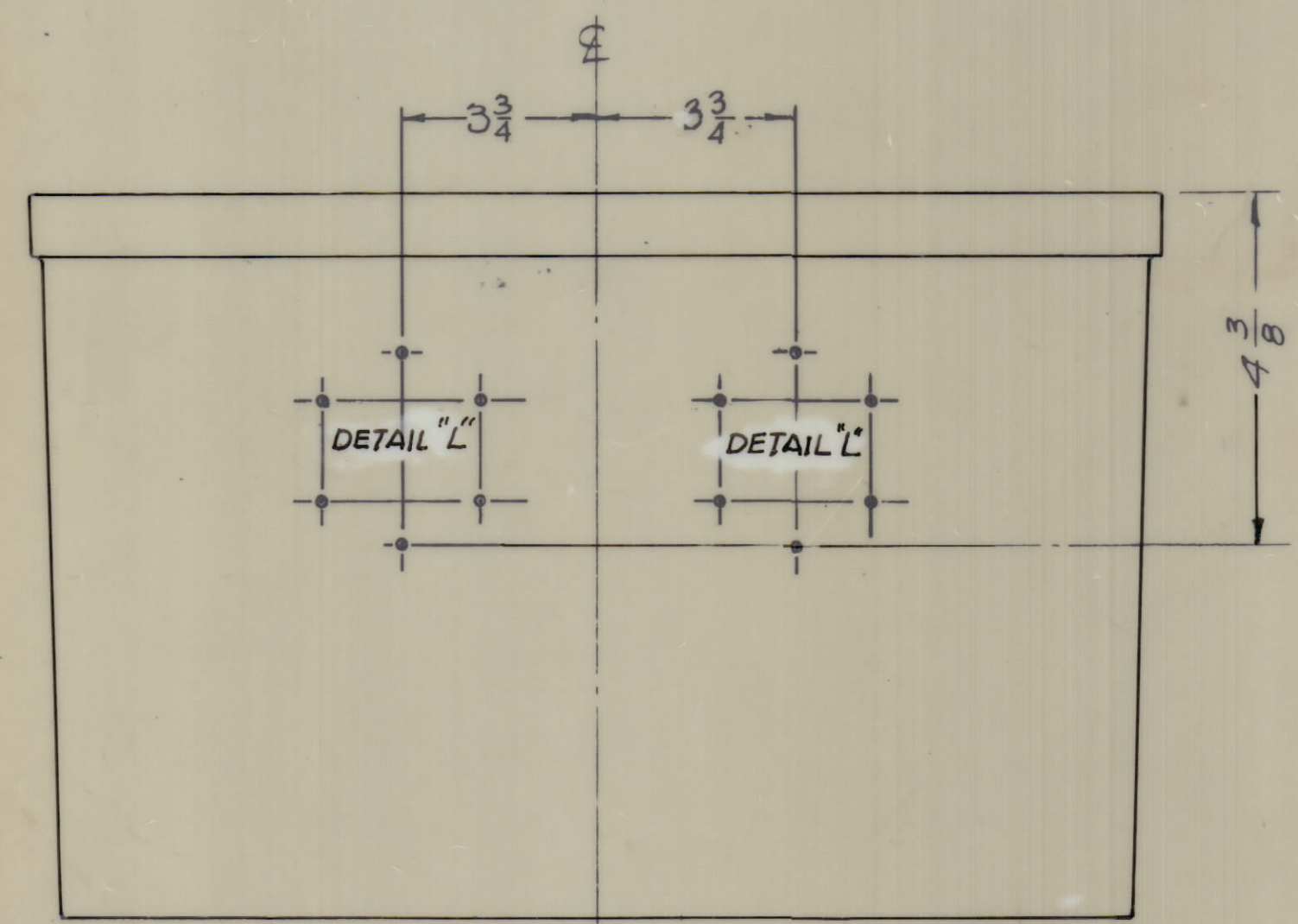
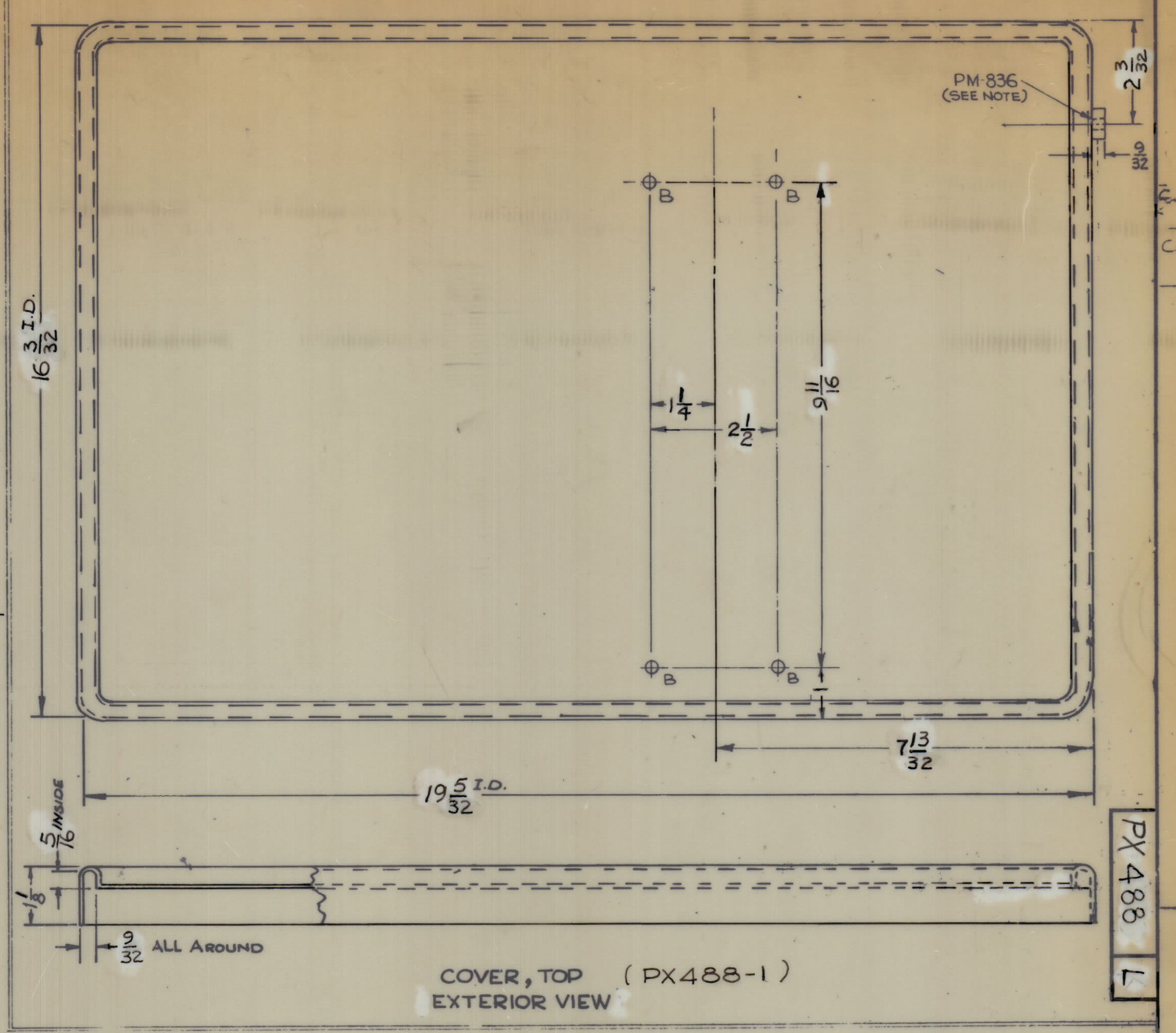
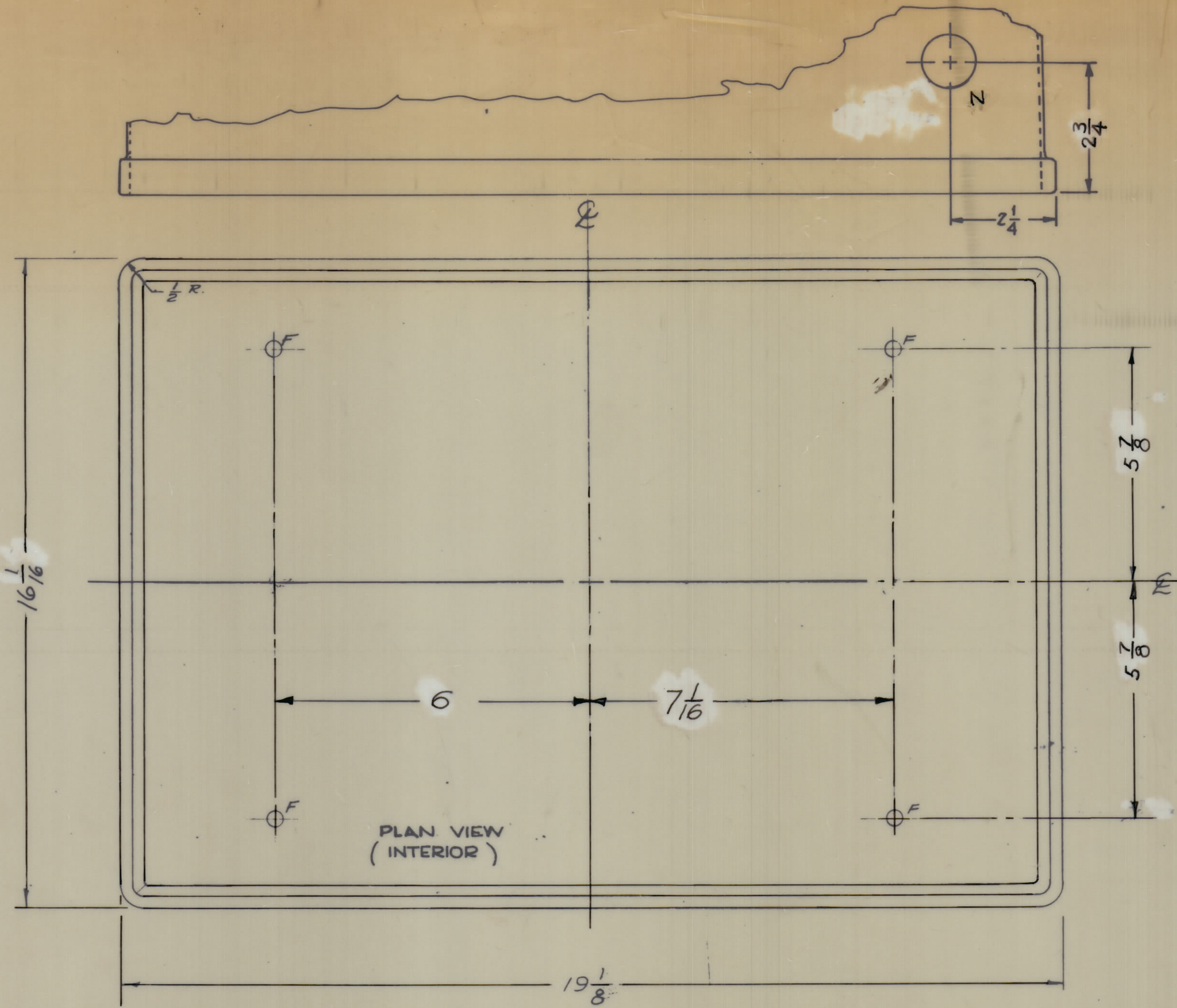
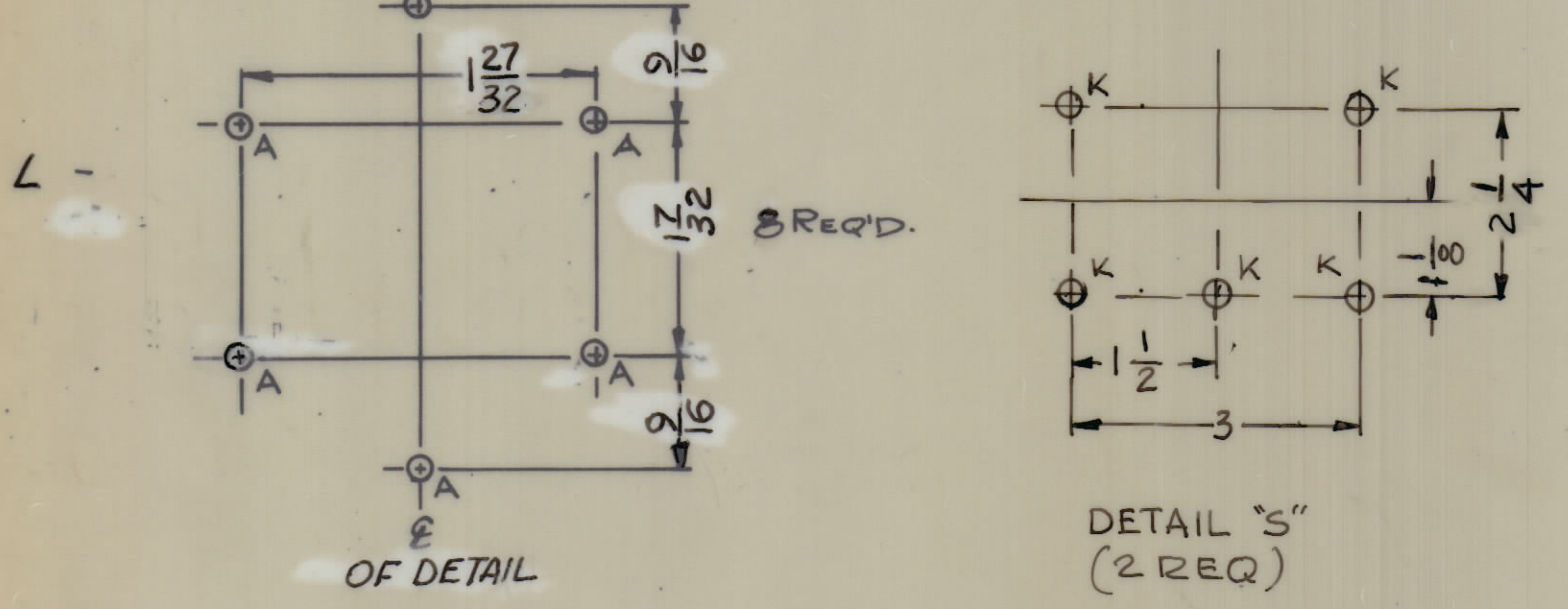


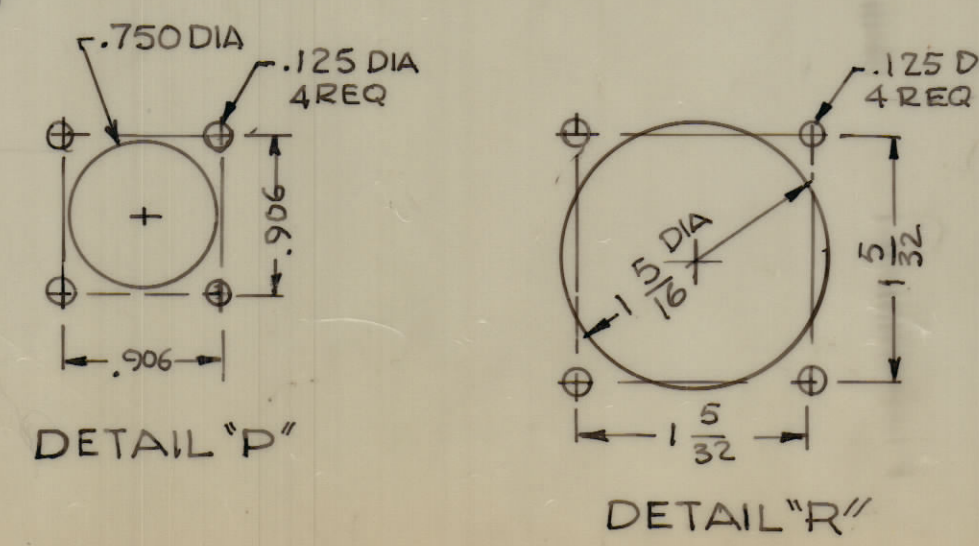
IF IT IS FOUND DESIRABLE TO CHANGE ANY TOLERANCE OR OTHER DETAIL SPECIFIED ON THIS DRAWING NOTIFY THE PURCHASER PROMPTLY.
 MAXIMUM ALLOWABLE TOLERANCES HAVE BEEN DETERMINED AND DEVIATIONS WILL BE CAUSE FOR REJECTION.
 REMOVE ALL BURRS AND SHARP EDGES

PERSONS RECEIVING THIS DRAWING
 THE TECHNICAL MATERIEL CORPORATION aims proprietary right in the material disclosed here. This drawing is issued in confidence for engineering information only and may not be reproduced or used to manufacture anything shown herein without permission from THE TECHNICAL MATERIEL CORPORATION to the user. This drawing is loaned for mutual assistance and is subject to recall at any time.
 Property of:
 THE TECHNICAL MATERIEL CORPORATION
 MAMARONECK, NEW YORK

- A - 1/8 (.125) D. 48 Req (6 per "L" Detail)
- B - 3/16 (.187) D. 4 Req
- C - No. 56 Dr. (.047) D. 4 Req
- F - 1/32 (.343) D. 4 Req.
- K - 1/4 (.250) D. 6 REQ.
- M - SEE CHART
- N - SEE CHART



TMC PART No.	DESCRIPTION	DETAIL "S"	"M" SIZE	"N" SIZE
PX 488	COVER & CASE	N/A	7/8 DIA	1 1/8 DIA
PX 488-1	COVER ONLY	N/A	N/A	N/A
PX 488-2	CASE ONLY	N/A	7/8 DIA	1 1/8 DIA
PX 488-3	COVER & CASE	2 REQ'D	DETAIL "P"	DETAIL "R"



FINISH NOTE:
 COAT ALL SURFACES WITH EPOXY RESIN.
 NOTE:
 THIS INSERT WILL BE USED TO FASTEN COVER CHAIN TO COVER.

REF TMC #LD-G13 (8)

REQ ITEM	PART NO.	DESCRIPTION	SYMBOL
STOCK SIZE			
Fiberglass			
MATERIAL WEIGHT PER PC			
TYPE & TEMPER			
HEAT TREAT. SPEC.			
SEE NOTE			
FINISH & SPEC. NO.			

1	TU-2	ATS-50/70	8/21/59
REQ PER UNIT	MODEL	PROJECT NO.	DATE
		APPY NO.	
		USED ON	