

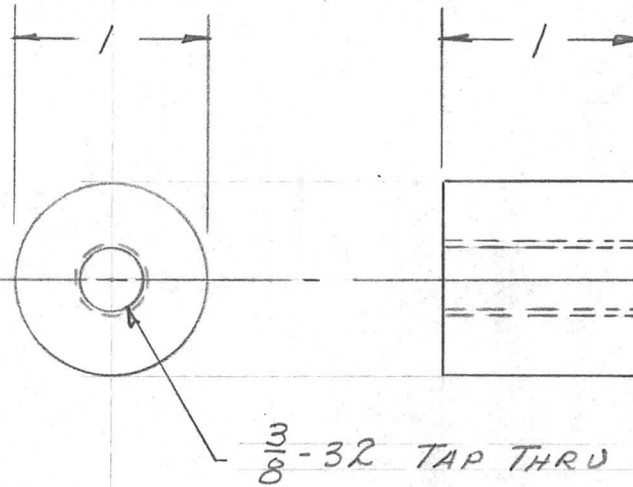
REQ. PER. UNIT	USED ON			PX-462
	MODEL	ASS'Y. NO.	DATE	
1	GPT-10KW		3-2-59	

NOTICE TO PERSONS RECEIVING THIS DRAWING

THE TECHNICAL MATERIEL CORPORATION claims proprietary right in the material disclosed hereon. This drawing is issued in confidence for engineering information only and may not be reproduced or used to manufacture anything shown hereon without permission from THE TECHNICAL MATERIEL CORPORATION to the user. This drawing is loaned for mutual assistance and is subject to recall at any time.

Property of:

THE TECHNICAL MATERIEL CORPORATION
MAMARONECK, NEW YORK



REQ.	ITEM	PART NO.	DESCRIPTION				SYMBOL
		1" ROUND	THE TECHNICAL MATERIEL CORP.				
		STOCK SIZE	MAMARONECK, NEW YORK				
		PHENOLIC	INSULATOR, SPACER				
		MATERIAL	SCREEN OVL D ADJ. RELAY PANEL				
ISSUE	ITEM	CHANGED FROM	DATE	CH. NO.	DRAFTS	CHECKER	ENG. APP.
TOLERANCES			SCALE: FULL SIZE				
DEC. DIM. ±			MAXIMUM ALLOWABLE TOLERANCES HAVE BEEN DETERMINED AND ANY DEVIATIONS WILL BE CAUSE FOR REJECTION. REMOVE ALL BURRS AND SHARP EDGES				
FRAC. DIM. ± 1/64							
ANGULAR DIM. ±							
TYPE & TEMPER		HEATTREAT. SPEC.	DRAWN		CHECKED		FINAL APPROVAL
NATURAL			[Signature]		[Signature]		PX-462
FINISH & SPEC. NO.		ELEC. DES. APP	MECH. DES. APP				