

IF IT IS FOUND DESIRABLE TO CHANGE ANY TOLERANCE OR OTHER DETAIL SPECIFIED ON THIS DRAWING NOTIFY THE PURCHASER PROMPTLY.

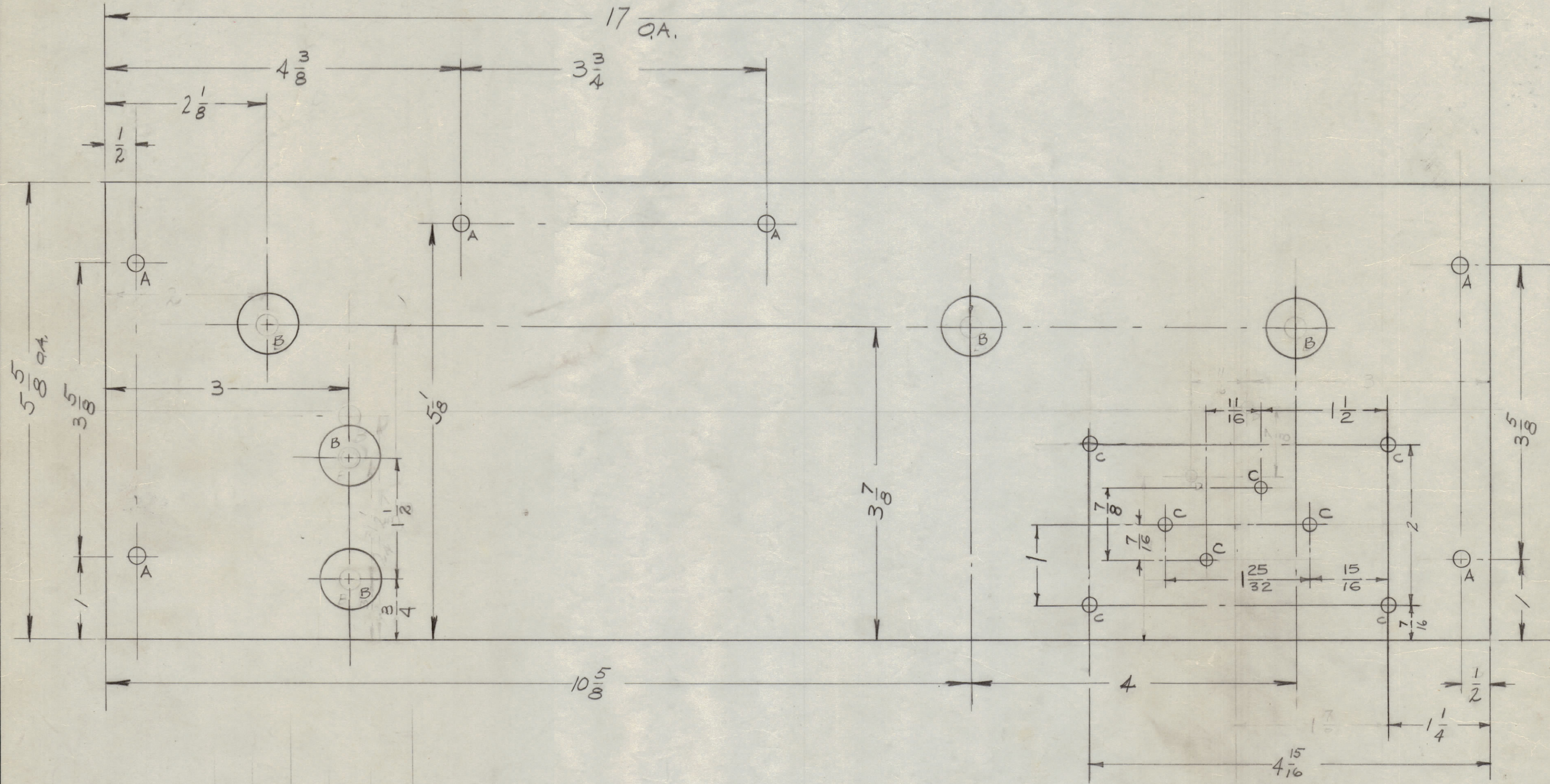
MAXIMUM ALLOWABLE TOLERANCES HAVE BEEN DETERMINED AND DEVIATIONS WILL BE CAUSE FOR REJECTION. REMOVE ALL BURRS AND SHARP EDGES.

HOLE

- A - 13/64 DIA.
- B - 3/4 DIA.
- C - 11/64 "
- D - 9/64 "

REQ'D.

- 6
- 5
- 8



PX-452 E

NOTICE TO PERSONS RECEIVING THIS DRAWING

THE TECHNICAL MATERIEL CORPORATION claims proprietary right in the material disclosed hereon. This drawing is issued in confidence for engineering information only and may not be reproduced or used to manufacture anything shown hereon without permission from THE TECHNICAL MATERIEL CORPORATION to the user. This drawing is loaned for mutual assistance and is subject to recall at any time.

Property of:

THE TECHNICAL MATERIEL CORPORATION
MAMARONECK, NEW YORK

Ref-4LD-542

ISSUE	ITEM	CHANGED FROM	DATE	CH. NO.	DRAFTS	CHECKER	ENG. APP.
E	1	MATERIAL WAS MELAMINE GID	3/15/6	1899	CS	JLB	alm
D	2	TWO NEW "C" HOLES ADDED	7/1/59	1247	16	JLB	GMB
D	1	TWO 1/2" HOLE (1/16 X 7/8) WERE "D" HOLES (9/64) & WERE MOVED					
C	1	MATERIAL CHANGED	7/1/59	1152	J.C.B.	JLB	JLB
B	1	"B" HOLES WERE 17/64 D.	6/2/59	1095	J.C.B.	JLB	JLB
A	1	ADDED 4 "C" HOLES	3/6/59	856	JLB	JLB	JLB

TOLERANCES		SCALE:
ALL OTHERS	DEC. DIM. ± FRAC. DIM. ± 1/64 ANGULAR DIM. ±	DRILL, PUNCH, COMMERCIAL STOCK SIZES AND MANUFACTURERS TOLERANCES ARE NOT INCLUDED.

REQ. PER UNIT	MODEL	PROJECT NO.	ASSY. NO.	DATE
1	GPT-10000	AT-100	1-30-59	

REQ. ITEM	PART NO.	DESCRIPTION	SYMBOL
1/4 THICK		THE TECHNICAL MATERIEL CORP. MAMARONECK, NEW YORK	
EPOXY		TERMINAL BOARD	
GRADE-G11		ANT-TUNER	
TYPE & TEMPER		DRAWN: JLB	ELEC. DES. APP.: JLB
HEAT TREAT. SPEC.		CHECKED: JLB	MECH. DES. APP.: JLB
FINISH & SPEC. NO.		FINAL APPROVAL: JLB	

PX-452 E