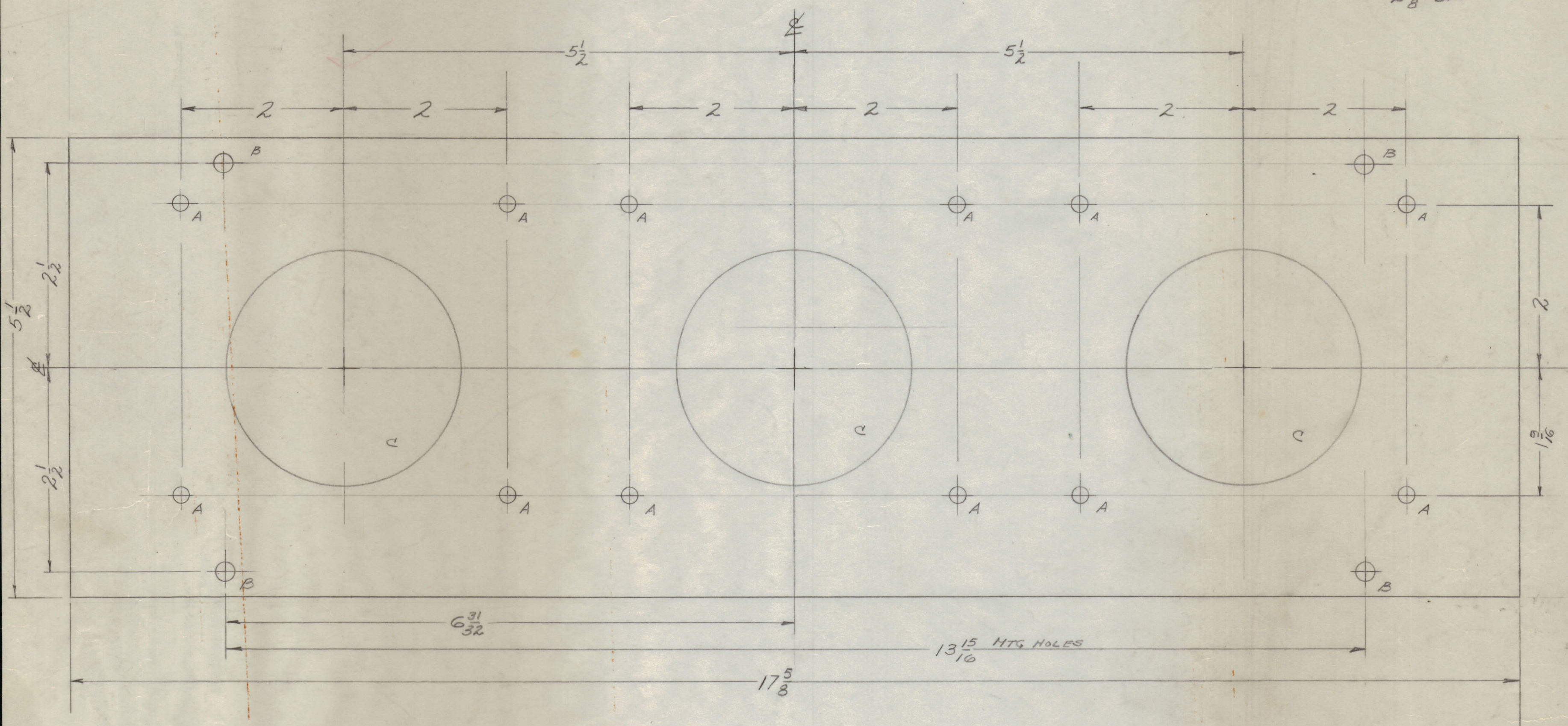


IF IT IS FOUND DESIRABLE TO CHANGE ANY TOLERANCE OR OTHER DETAIL SPECIFIED ON THIS DRAWING NOTIFY THE PURCHASER PROMPTLY.

MAXIMUM ALLOWABLE TOLERANCES HAVE BEEN DETERMINED AND DEVIATIONS WILL BE CAUSE FOR REJECTION. REMOVE ALL BURRS AND SHARP EDGES.

A -  $\frac{3}{16}$  (.187) DIA. HOLE 12 REQ.  
 B -  $\frac{13}{64}$  (.203) DIA. HOLE 4 REQ.  
 C -  $2\frac{7}{8}$  DIA 3 REQ.



PX-450 C

**NOTICE TO PERSONS RECEIVING THIS DRAWING**

THE TECHNICAL MATERIEL CORPORATION claims proprietary right in the material disclosed hereon. This drawing is issued in confidence for engineering information only and may not be reproduced or used to manufacture anything shown hereon without permission from THE TECHNICAL MATERIEL CORPORATION to the user. This drawing is loaned for mutual assistance and is subject to recall at any time.

Property of:  
 THE TECHNICAL MATERIEL CORPORATION  
 MAMARONECK, NEW YORK

LD-1487(4) Marking, Meter Panel  
 LD-548(4) Lettering, Rear  
 REF. LD-505(4) Engraving, Front

C	CLERICAL CHANGE	11-11-65	at	gl			
B	1 OVERALL DIM. $17\frac{5}{8}$ WAS $17\frac{3}{4}$	6-29-62	6264	V.R.R.			
A	1 BLACK MATTE WAS BLACK	9-21-59	FR/38	DM			

ISSUE	ITEM	CHANGED FROM	DATE	CH. NO.	DRAFTS	CHECKER	ENG. APP.
TOLERANCES		SCALE: $\frac{1}{8}$					
ALL OTHERS	DEC. DIM. $\pm$ FRAC. DIM. $\pm$ $\frac{1}{64}$ ANGULAR DIM. $\pm$	DRILL, PUNCH, COMMERCIAL STOCK SIZES AND MANUFACTURERS TOLERANCES ARE NOT INCLUDED.					

1	GPT-10KLF			1-12-65
1	GPT-10K			2-5-59
REQ. PER UNIT	MODEL	PROJECT NO.	ASSY. NO.	DATE

REQ. ITEM	PART NO.	DESCRIPTION	SYMBOL
	$\frac{3}{16}$ THICK	THE TECHNICAL MATERIEL CORP. MAMARONECK, NEW YORK	
	STOCK SIZE		
	PHENOLIC	METER PANEL EXCITER FRAME	
	MATERIAL	WEIGHT PER PC.	
	XXXP		
	TYPE & TEMPER		
	HEAT TREAT. SPEC.		
	BLACK MATTE		
	FINISH & SPEC. NO.		