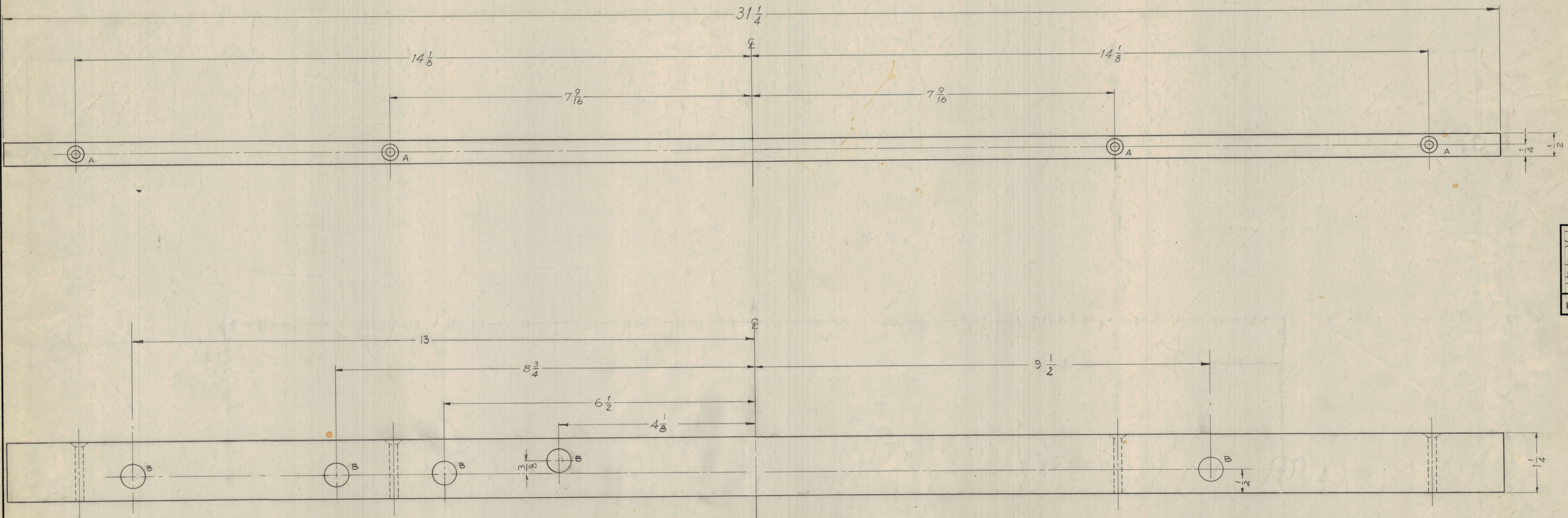
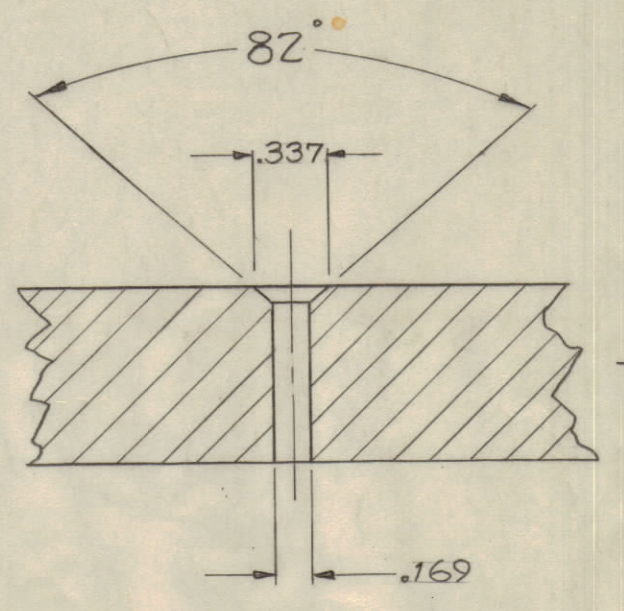


IF IT IS FOUND DESIRABLE TO CHANGE ANY TOLERANCE OR OTHER DETAIL SPECIFIED ON THIS DRAWING NOTIFY THE PURCHASER PROMPTLY.
 MAXIMUM ALLOWABLE TOLERANCES HAVE BEEN DETERMINED AND DEVIATIONS WILL BE CAUSE FOR REJECTION.
 REMOVE ALL BURRS AND SHARP EDGES



B ~ 1/2 DIA. 5 Req.

A Detail - 4 Req.
 FOR 8-32 F.H.S



NOTICE TO PERSONS RECEIVING THIS DRAWING

THE TECHNICAL MATERIEL CORPORATION claims proprietary right in the material disclosed herein. This drawing is issued in confidence for engineering information only and may not be reproduced or used to manufacture anything shown hereon without permission from THE TECHNICAL MATERIEL CORPORATION to the user. This drawing is loaned for mutual assistance and is subject to recall at any time.

Property of:
 THE TECHNICAL MATERIEL CORPORATION
 MAMARONECK, NEW YORK

ISSUE	ITEM	CHANGED FROM	DATE	CN. NO.	DRAFTS	CHECKER	ENG. APP.
D	1	(1) "A" HOLE DELETED	2-11-59	4162	WJS	JCS	[Signature]
C	1	(100) TO (.5) "B" HOLES 2 1/2 WAS 11"	8-30-59	1368	RJD	[Signature]	[Signature]
B	1	"B" HOLE WAS ON 1/2 LINE	4/10/59		enc	HLD	[Signature]
A	1	TWO "B" HOLES ADDED	3/10/59	BIS	PAT	[Signature]	[Signature]

SCALE:
 ALL DEC. DIM. ± 1/64
 OTHERS FRAC. DIM. ± 1/64
 DRILL, PUNCH, COMMERCIAL STOCK SIZES AND MANUFACTURERS TOLERANCES ARE NOT INCLUDED.

REQ. ITEM	PART NO.	DESCRIPTION	SYMBOL
1	1/2	STIFFENER, MOUNTING BOARD	
PHENOLIC		H.V. RESISTORS	
MATERIAL WEIGHT PER PC			
X X X P			
TYPE & TEMPER		JOHN C. BIELE	
HEAT TREAT. SPEC.		DR	
NATURAL		ELEC. DES. APP.	
FINISH & SPEC. NO.		MECH. DES. APP.	
		CHECKED	FINAL APPROVAL
			PX-447 D

1	GPT 10 K	POWER SUPPLY	2-9-59
REQ. PER UNIT	MODEL	PROJECT NO.	ASSY. NO.
			DATE
			USED ON

PX-447 D