

HOLE LEGEND

- A - HOLES TO BE MACHINED AS FOLLOWS: 3 REQ.
 1- 13/64 DRILL (.203) TO .562 DP
 2- 120° C'SINK .22-.25 DIA.
 3- TAP .410 MIN. DEPTH, USE HELI COIL TAP #3 FPB
 4- MOUNT ITEM (1) 3/4 TO 1-1/2 PITCH BELOW SURFACE
 5- BREAK OFF DRIVING TANG

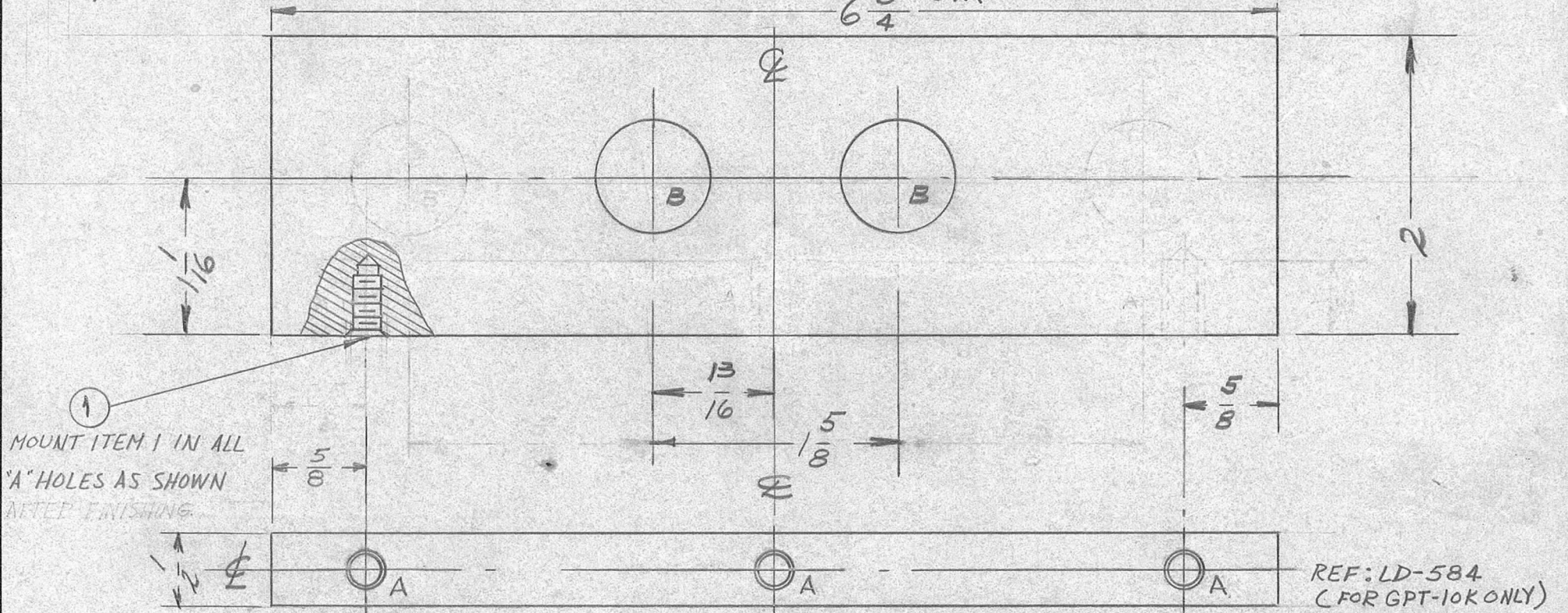
B - 3/4 DIA

2 REQ.

6 ³/₄ O.A.

APPLY S-113 BEFORE HARDWARE IS MOUNTED.

* FUNGUS PROOFING PER TMC SPECIFICATION S-113



① MOUNT ITEM 1 IN ALL 'A' HOLES AS SHOWN AFTER FINISHING.

REF: LD-584 (FOR GPT-10K ONLY)

REQ. PER UNIT	USED ON		
	MODEL	ASS'Y. NO.	DATE
1	GPT-10K	AR-109	1-29-59
1	GPT-40K	AP-103	

PX-445 C

REQ.	ITEM	PART NO.	DESCRIPTION	SYMBOL
3	1	NT-139-SFI-20	INSERT, SCREW THREAD	
C	1	S-113 NOTE ADDED	1/2 THICK	
B	2	"A" HOLES WERE DRILL TAP 10-32 ITEM 1 ADDED	STOCK SIZE	
A	1	TWO "B" HOLES DELETED	PHENOLIC	
ISSUE	ITEM	CHANGED FROM	MATERIAL	
		DATE	TYPE & TEMPER	
		CH. NO.	HEAT TREAT. SPEC.	
		DRAFTS	FINISH & SPEC. NO.	
		CHECKER	ELEC. DES. APP.	
		ENG. APP.	MECH. DES. APP.	
TOLERANCES		SCALE: FULL	DRAWN: [Signature] CHECKED: [Signature] FINAL APPROVAL: [Signature]	
DEC. DIM. ±		MAXIMUM ALLOWABLE TOLERANCES HAVE BEEN DETERMINED AND ANY DEVIATIONS WILL BE CAUSE FOR REJECTION.		
FRAC. DIM. ±		REMOVE ALL BURRS AND SHARP EDGES		
ANGULAR DIM. ±		PX-445 C		