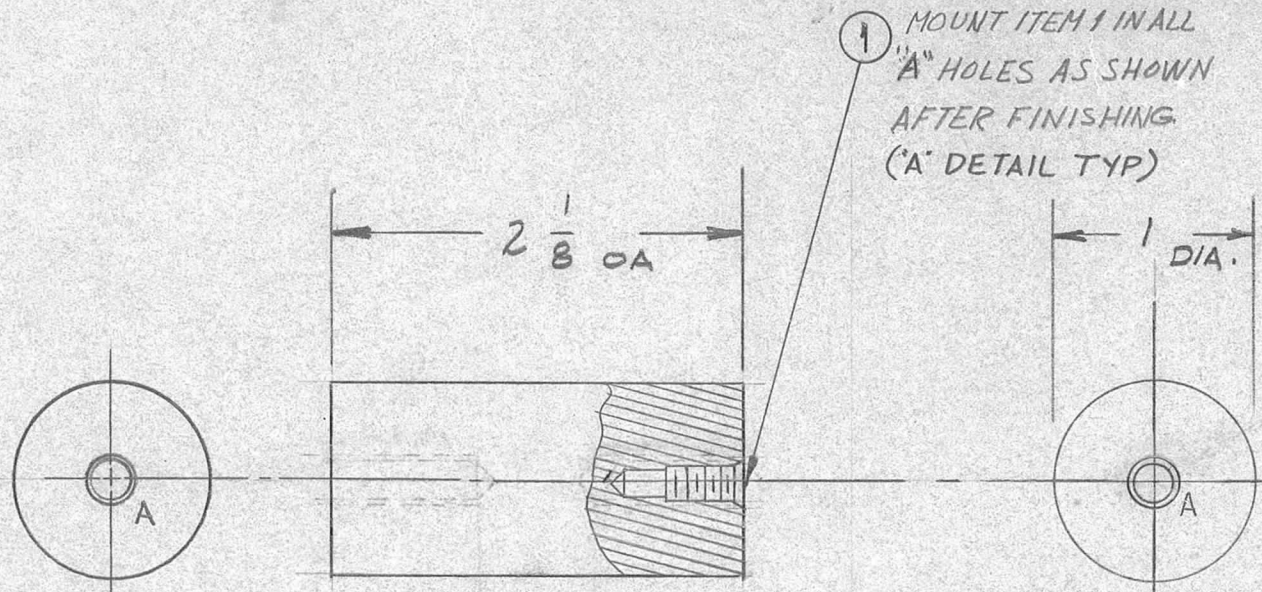


REQ. PER UNIT	USED ON			PX-435	C
	MODEL	ASS'Y. NO.	DATE		
3	GPT-1904	RF Deck	1-2-59		



① MOUNT ITEM 1 IN ALL "A" HOLES AS SHOWN AFTER FINISHING ('A' DETAIL TYP)

**HOLE LEGEND**

- A - HOLES TO BE MACHINED AS FOLLOWS: 2-REQ.
- 1- #5(.203) DRILL TO .625 DP
  - 2- 120° C'SINK .24-.27 DIA.
  - 3- TAP .120 MIN DEPTH, USE HELI COIL TAP #3 CPB
  - 4- MOUNT ITEM (1) 3/4 TO 1-1/2 PITCH BELOW SURFACE.
  - 5- BREAK OFF DRIVING TANG.

**NOTICE TO PERSONS RECEIVING THIS DRAWING**

THE TECHNICAL MATERIEL CORPORATION claims proprietary right in the material disclosed hereon. This drawing is issued in confidence for engineering information only and may not be reproduced or used to manufacture anything shown hereon without permission from THE TECHNICAL MATERIEL CORPORATION to the user. This drawing is loaned for mutual assistance and is subject to recall at any time.

Property of:  
THE TECHNICAL MATERIEL CORPORATION  
MAMARONECK, NEW YORK

		2	1	NT-139-SCI-20	INSERT, SCREW THREAD		
		REQ.	ITEM	PART NO.	DESCRIPTION		SYMBOL
C		EPOXY WAS MELAMINE			1" THICK		THE TECHNICAL MATERIEL CORP. MAMARONECK, NEW YORK
B	2	ITEM (1) ADDED			STOCK SIZE		
A	1	"A" HOLE WAS DR & TAP 10-24			EPOXY		
		ADDED TYPE 5 TEMP			MATERIAL		RF BAND SW SPACERS
ISSUE	ITEM	CHANGED FROM	DATE	CH. NO.	DRAFTS	CHECKER	ENG. APP.
TOLERANCES			SCALE:				
DEC. DIM. ±			MAXIMUM ALLOWABLE TOLERANCES HAVE BEEN DETERMINED AND ANY DEVIATIONS WILL BE CAUSE FOR REJECTION.				
FRAC. DIM. ± 1/64			REMOVE ALL BURRS AND SHARP EDGES				
ANGULAR DIM. ±			TYPE & TEMPER		HEAT TREAT. SPEC.	DRAWN	CHECKED
			FINISH & SPEC. NO.		ELEC. DES. APP	MECH. DES. APP	
							PX-435 C