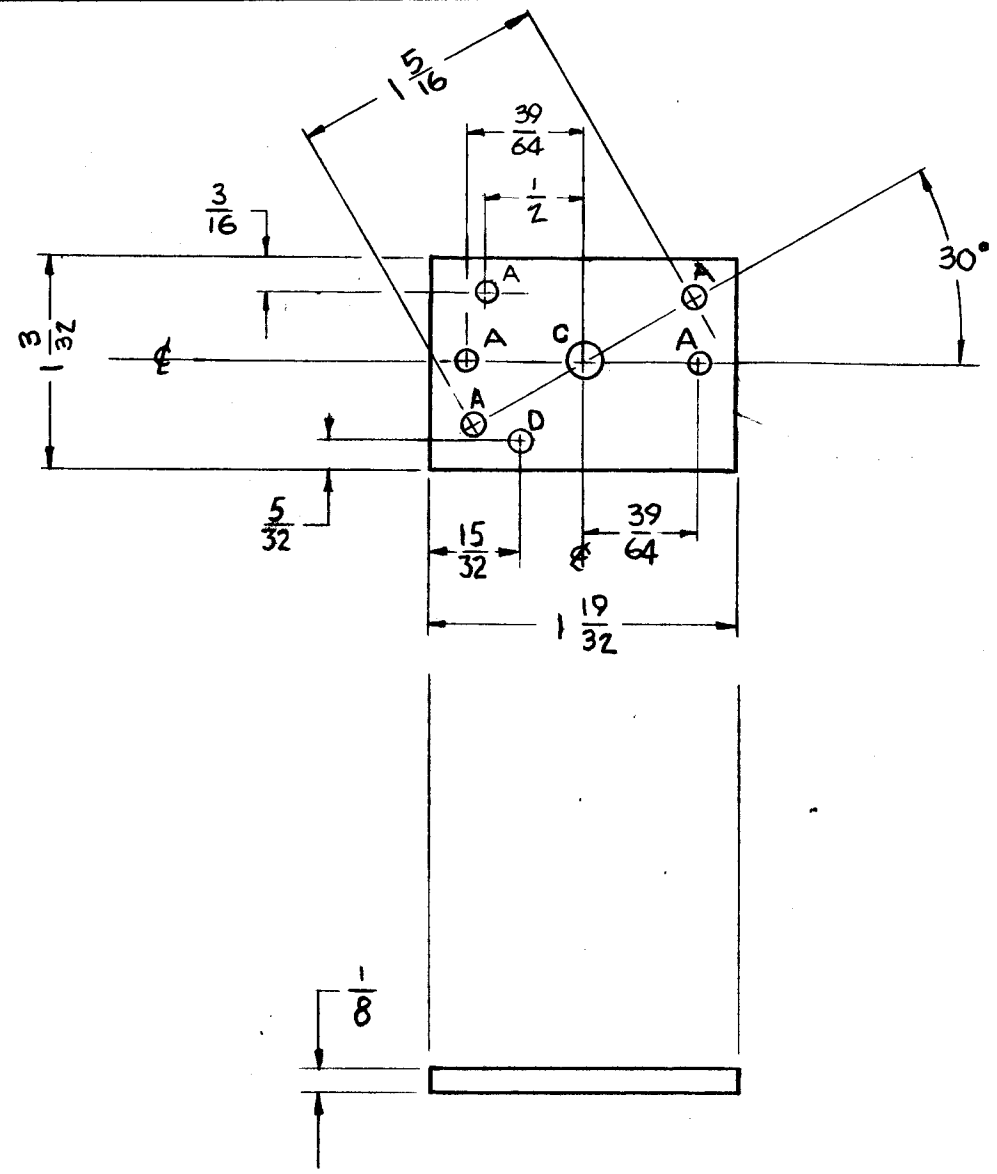
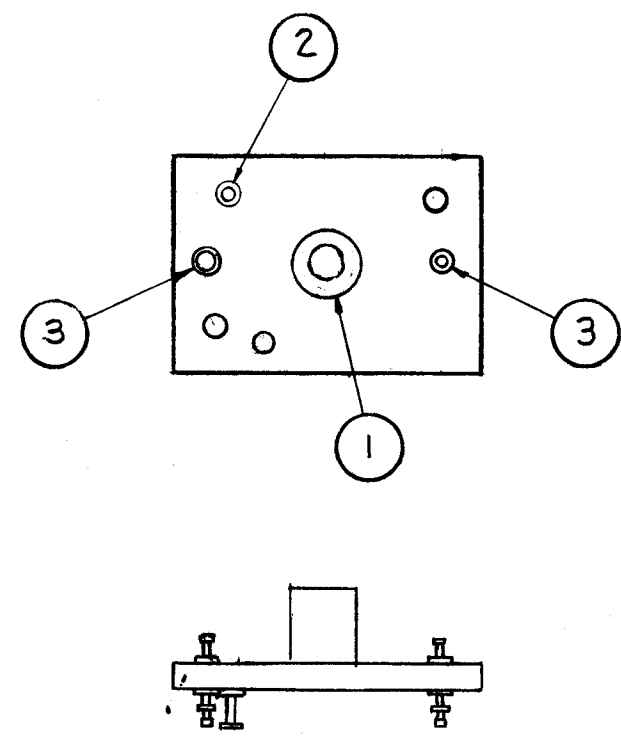


PX-423, B



HOLE LEGEND

A ~ .116 ± .002 DIA. 5 HOLES REQ.
 C ~ .187 DIA. 1 HOLE REQ.
 D ~ .093 DIA. 1 HOLE REQ.



| | | | | | | | |
|-------------------|------|---|---------|---------|--------|--------------------|--------------------|
| ISSUE | ITEM | CHANGED FROM | DATE | CH. NO. | DRAFTS | CHECKER | ENG. APP. |
| B | 1 | ON PICT. "D" HOLE & LOC. DIM. ADD; HOLE LEGEND "D" HOLE ADD. | 12-1-64 | 13019 | 2.2. | <i>[Signature]</i> | <i>[Signature]</i> |
| A | 1 | "B" HOLES CHGD. TO "A" HOLES "B" HOLES WERE 1/8 DIA | 12/9/58 | 539 | MA | <i>[Signature]</i> | <i>[Signature]</i> |
| TOLERANCES | | SCALE: <i>[Symbol]</i> | | | | | |
| DEC. DIM. ± | | MAXIMUM ALLOWABLE TOLERANCES HAVE BEEN DETERMINED AND ANY DEVIATIONS WILL BE CAUSE FOR REJECTION. | | | | | |
| FRAC. DIM. ± 1/64 | | REMOVE ALL BURRS AND SHARP EDGES | | | | | |
| ANGULAR DIM. ± 20 | | | | | | | |

| | | | | |
|---------------|--------|-------------|------------|----------|
| REQ. PER UNIT | A-1591 | PROJECT NO. | ASS'Y. NO. | DATE |
| | | | | 11-10-58 |
| USED ON | | | | |

| | | | | |
|--------------------|-------------------|---------------------------------|---|--------------------|
| 2 | 3 | TE-131-4 | TERMINAL, MIDGET (DOUBLE END) | |
| 1 | 2 | TE-105-4 | TERMINAL, SHORT TURRET | |
| 1 | 1 | TE-108-13 | STANDOFF, RIVET TYPE | |
| REQ. ITEM | PART NO. | | DESCRIPTION | SYMBOL |
| 1/8 STOCK SIZE | | | THE TECHNICAL MATERIEL CORP. MAMARONECK, NEW YORK | |
| PHENOLIC MATERIAL | | | MOUNTING BOARD, BOTTOM | |
| XXXXP | | J.C. BIELE | <i>[Signature]</i> | <i>[Signature]</i> |
| TYPE & TEMPER | HEAT TREAT. SPEC. | DRAWN | CHECKED | FINAL APPROVAL |
| NATURAL | | <i>[Signature]</i> | <i>[Signature]</i> | PX-423 B |
| FINISH & SPEC. NO. | | ELEC. DES. APP. MECH. DES. APP. | | |