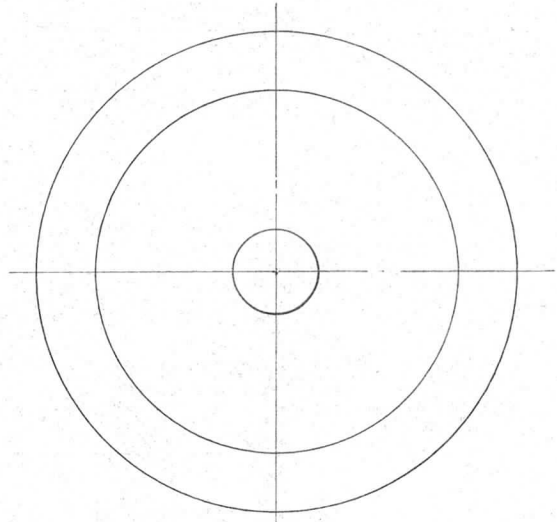
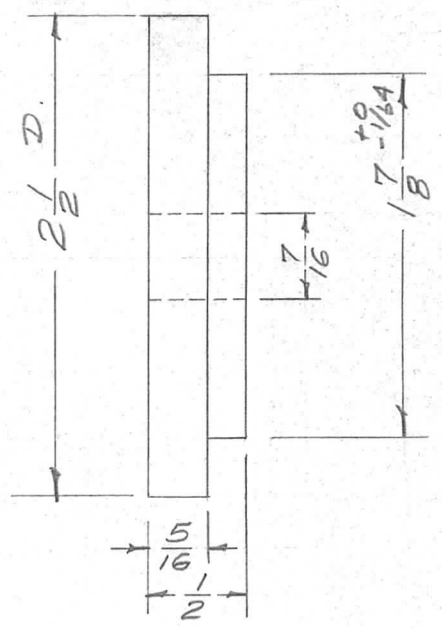


| | | | | | |
|---------------|------------|------------|---------|--------|---|
| REQ. PER UNIT | USED ON | | | PX-412 | A |
| | MODEL | ASS'Y. NO. | DATE | | |
| 1 | VRA-1,2,2A | A-811 | 6-26-58 | | |



| REQ. | ITEM | PART NO. | DESCRIPTION | | | | SYMBOL |
|-------------------------------|------|----------------------|---|-----------------|---------|----------------|-----------|
| | | 2-1/2 OD | THE TECHNICAL MATERIEL CORP. MAMARONECK. NEW YORK | | | | |
| | | STOCK SIZE | INSULATOR, MAST SUPPORT, | | | | |
| | | Linen Base Phenolic | INSIDE | | | | |
| | | MATERIAL | | | | | |
| A | 1 | TO FINISH S113 ADDED | 10.21.64 | 12663 | WJB | JCB | MMK |
| ISSUE | ITEM | CHANGED FROM | DATE | CH. NO. | DRAFTS | CHECKER | ENG. APP. |
| TOLERANCES | | | SCALE: FULL | | | | |
| DEC. DIM. ± | | | MAXIMUM ALLOWABLE TOLERANCES HAVE BEEN DETERMINED AND ANY DEVIATIONS WILL BE CAUSE FOR REJECTION. | | | | |
| FRAC. DIM. ± 1/64 | | | REMOVE ALL BURRS AND SHARP EDGES | | | | |
| ANGULAR DIM. ± | | | | | | | |
| LE | | 16 4/26/58 | DRAWN | | CHECKED | FINAL APPROVAL | |
| Natural, S113 FUNGUS PROOFING | | | | | | PX-412 A | |
| FINISH & SPEC. NO. | | ELEC. DES. APP. | | MECH. DES. APP. | | | |