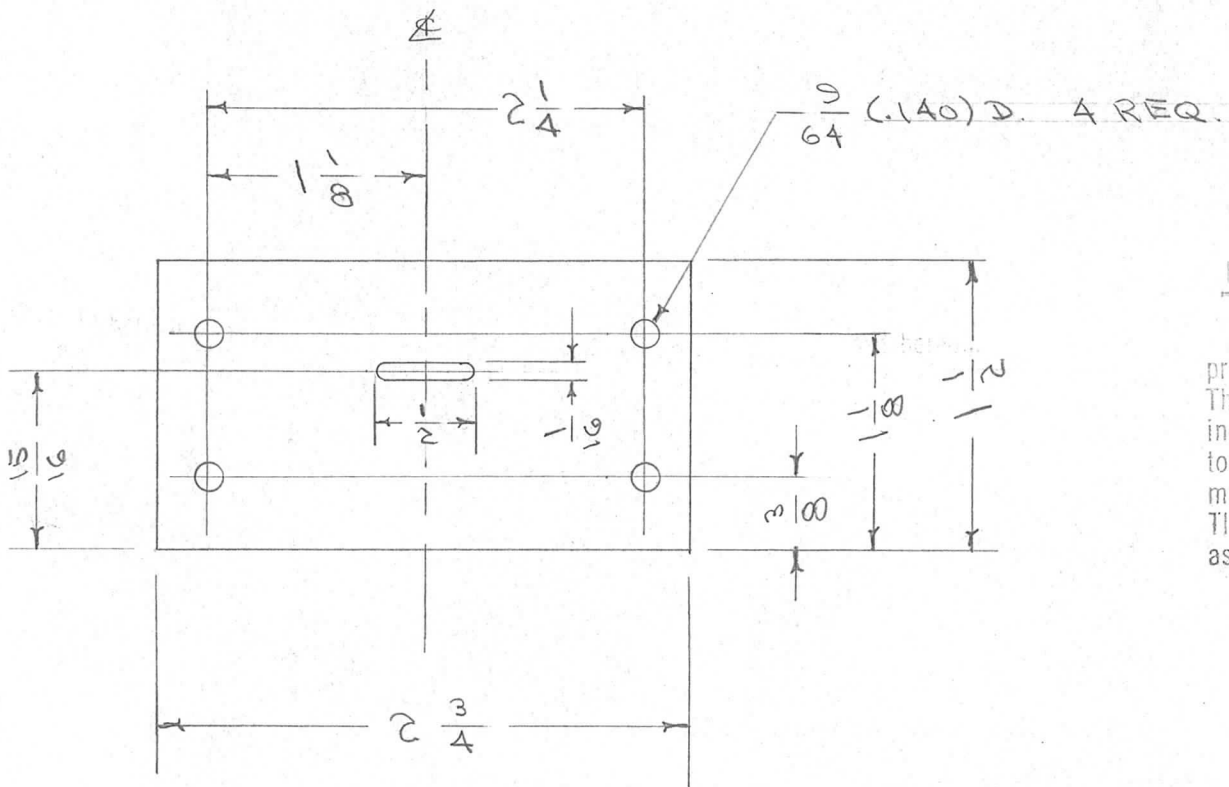


IF IT IS FOUND DESIRABLE TO CHANGE ANY TOLERANCE OR OTHER DETAIL SPECIFIED ON THIS DRAWING NOTIFY THE PURCHASER PROMPTLY.

PX-300

MAXIMUM ALLOWABLE TOLERANCES HAVE BEEN DETERMINED AND DEVIATIONS WILL BE CAUSE FOR REJECTION. REMOVE ALL BURRS AND SHARP EDGES

REQ. PER UNIT	USED ON			
	MODEL	PROJECT NO.	ASS'Y. NO.	DATE
1	RTF			9-26-55
1	RTF-2	P/A		11/20/58



NOTICE TO PERSONS RECEIVING THIS DRAWING

THE TECHNICAL MATERIEL CORPORATION claims proprietary right in the material disclosed herein. This drawing is issued in confidence for engineering information only and may not be reproduced or used to manufacture anything shown herein without permission from THE TECHNICAL MATERIEL CORPORATION to the user. This drawing is loaned for mutual assistance and is subject to recall at any time.

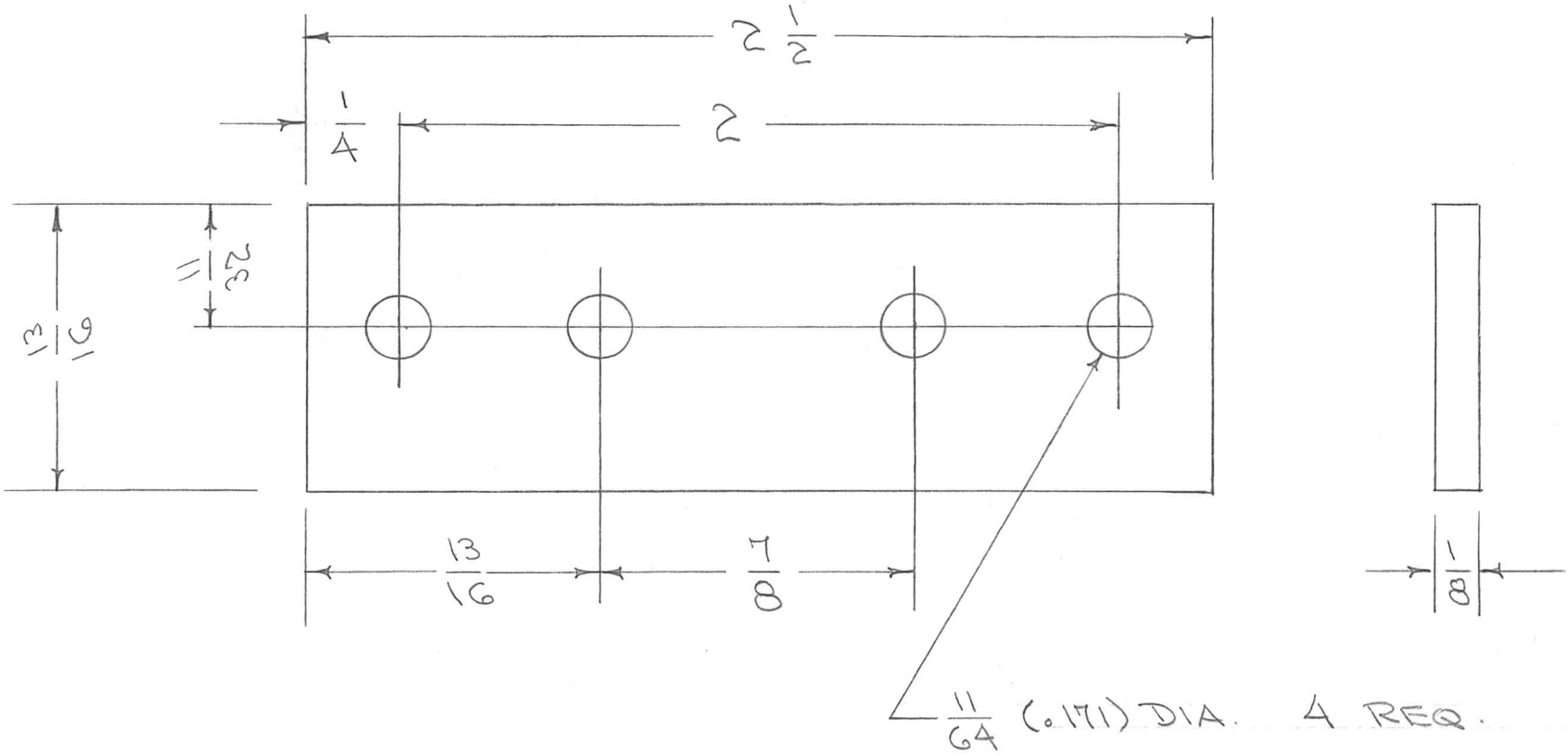
Property of:
THE TECHNICAL MATERIEL CORPORATION
MAMARONECK, NEW YORK

REQ.	ITEM	PART NO.	DESCRIPTION	SYMBOL
	1/8 THR.		THE TECHNICAL MATERIEL CORP. MAMARONECK, NEW YORK	
	STOCK SIZE			
	TEFLON		INSULATOR, R.F. FINAL	
	MATERIAL	WEIGHT PER PC.	POW / AMP	
	TYPE & TEMPER		CD 9-26-55 GM 1/11/58	
	HEAT TREAT. SPEC.		DRAWN: <i>JAD</i> ELEC. DES. APP. <i>WJL</i> MECH. DES. APP. <i>WJL</i>	
	FINISH & SPEC. NO.		CHECKED: <i>JAD</i> FINAL APPROVAL: <i>WJL</i>	

ISSUE	ITEM	CHANGED FROM	DATE	CN. NO.	DRAFTS	CHECKER	ENG. APP.
TOLERANCES			SCALE				
ALL OTHERS	DEC. DIM. ±	FRAC. DIM. ± 1/24	DRILL, PUNCH, COMMERCIAL STOCK SIZES AND MANUFACTURERS TOLERANCES ARE NOT INCLUDED.				

PX-300

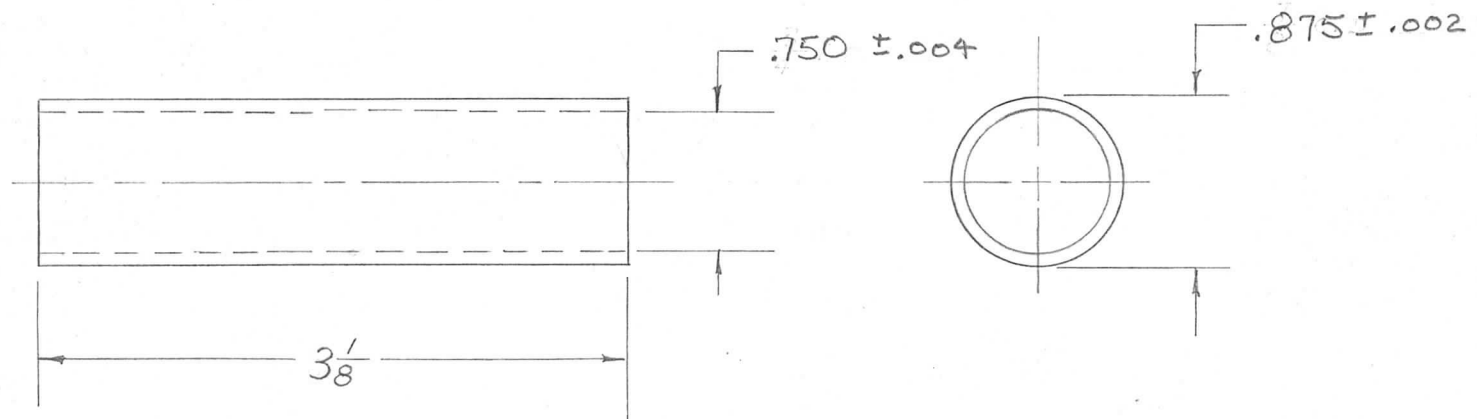
REQ. PER UNIT	USED ON			PX-301	C
	MODEL	ASS'Y. NO.	DATE		
2	RTF		4-17-56		
2	RTF-2	MULT.	11-20-58		



* FUNGUS PROOFING PER TMC SPECIFICATION S-113

ISSUE	ITEM	CHANGED FROM	DATE	CH. NO.	DRAFTS	CHECKER	ENG. APP.	REQ. ITEM	PART NO.	DESCRIPTION	SYMBOL
									1/8 THK.	THE TECHNICAL MATERIEL CORP. MAMARONECK, NEW YORK	
									STOCK SIZE		
C		S113 ADDED	4/13/64	11186	A.M.	<i>[Signature]</i>	<i>[Signature]</i>			INSULATOR, CONDENSER	
B	2	QUAN. WAS 1	4/17/64	2		<i>[Signature]</i>	<i>[Signature]</i>			MULT.	GPT-750
B	1	COMPLETE REVISION									
TOLERANCES			SCALE:			MATERIAL		TYPE & TEMPER		DRAWN	
DEC. DIM. ±			MAXIMUM ALLOWABLE TOLERANCES HAVE BEEN DETERMINED AND ANY DEVIATIONS WILL BE CAUSE FOR REJECTION.			XXX P LAMINATE		HEAT TREAT. SPEC.		CHECKED	
FRAC. DIM. ±			REMOVE ALL BURRS AND SHARP EDGES			NATURAL *				FINAL APPROVAL	
ANGULAR DIM. ±						FINISH & SPEC. NO.		ELEC. DES. APP.		MECH. DES. APP.	
										PX-301 C	

REQ. PER UNIT	USED ON			PX-311
	MODEL	ASS'Y. NO.	DATE	
1	SW-176		10-20-55	



ISSUE	ITEM	CHANGED FROM	DATE	CH. NO.	DRAFTS	CHECKER	ENG. APP.	REQ. ITEM	PART NO.	DESCRIPTION	SYMBOL	
								$\frac{3}{4}$ ID - $\frac{7}{8}$ O.D. TUBING		THE TECHNICAL MATERIEL CORP. MAMARONECK. NEW YORK		
								STOCK SIZE		CASE, PHENOLIC		
								BAKELITE				
								MATERIAL				
								LINEN BASE	—H—	P3 10 20 55 JAW	ARB	
								TYPE & TEMPER	HEAT TREAT. SPEC.	DRAWN	CHECKED	FINAL APPROVAL
											WJK	PX-311
								FINISH & SPEC. NO.		ELEC. DES. APP.	MECH. DES. APP.	

TOLERANCES

DEC. DIM. \pm

FRAC. DIM. \pm Y64

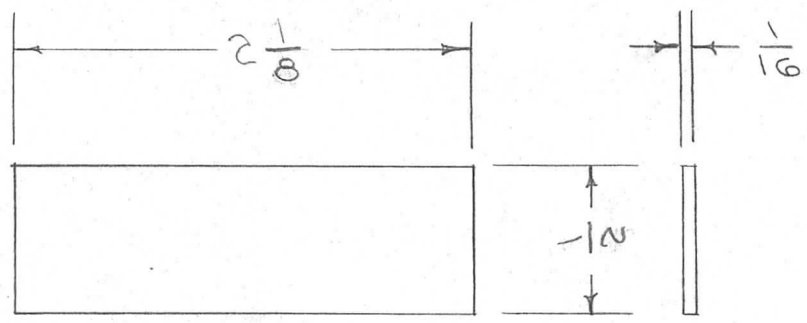
ANGULAR DIM. \pm

SCALE:

MAXIMUM ALLOWABLE TOLERANCES HAVE BEEN DETERMINED AND ANY DEVIATIONS WILL BE CAUSE FOR REJECTION.

REMOVE ALL BURRS AND SHARP EDGES

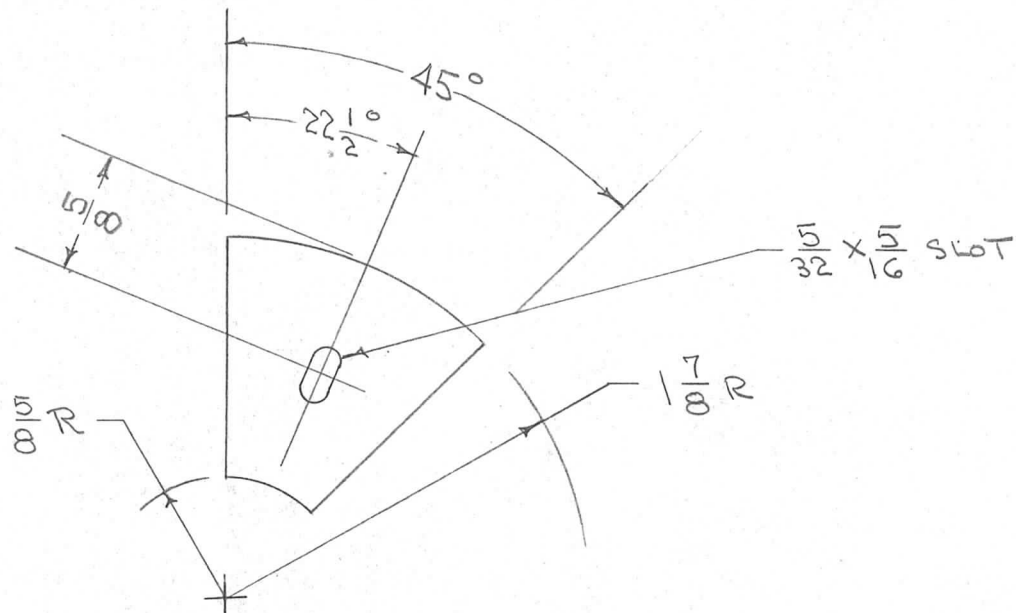
REQ. PER UNIT	USED ON			PX-313	A
	MODEL	ASS'Y. NO.	DATE		
2	LFD-1-2	A-1133	11-4-55		
2	HFD-1-2	A-1144	8-13-56		



ISSUE	ITEM	CHANGED FROM	DATE	CH. NO.	DRAFTS	CHECKER	ENG. APP.	REQ. ITEM	PART NO.	DESCRIPTION	SYMBOL		
										THE TECHNICAL MATERIEL CORP. MAMARONECK, NEW YORK	A		
	A	DIM $2 \frac{1}{8}$ WAS $2 \frac{1}{4}$	2.9.67	17808	W+W	QCB	MX			SIDE SUPPORT, TRANS.			
										LFD-1,2 HFD-1,2			
TOLERANCES								SCALE:					
DEC. DIM. \pm								MAXIMUM ALLOWABLE TOLERANCES HAVE BEEN DETERMINED AND ANY DEVIATIONS WILL BE CAUSE FOR REJECTION.					
FRAC. DIM. $\pm \frac{1}{64}$								REMOVE ALL BURRS AND SHARP EDGES					
ANGULAR DIM. \pm													
								XXX P LAMINATE	II	CDD 11-4-55	QCB	A. J. J.	
								NATURAL					
								FINISH & SPEC. NO.					
												PX-313	A

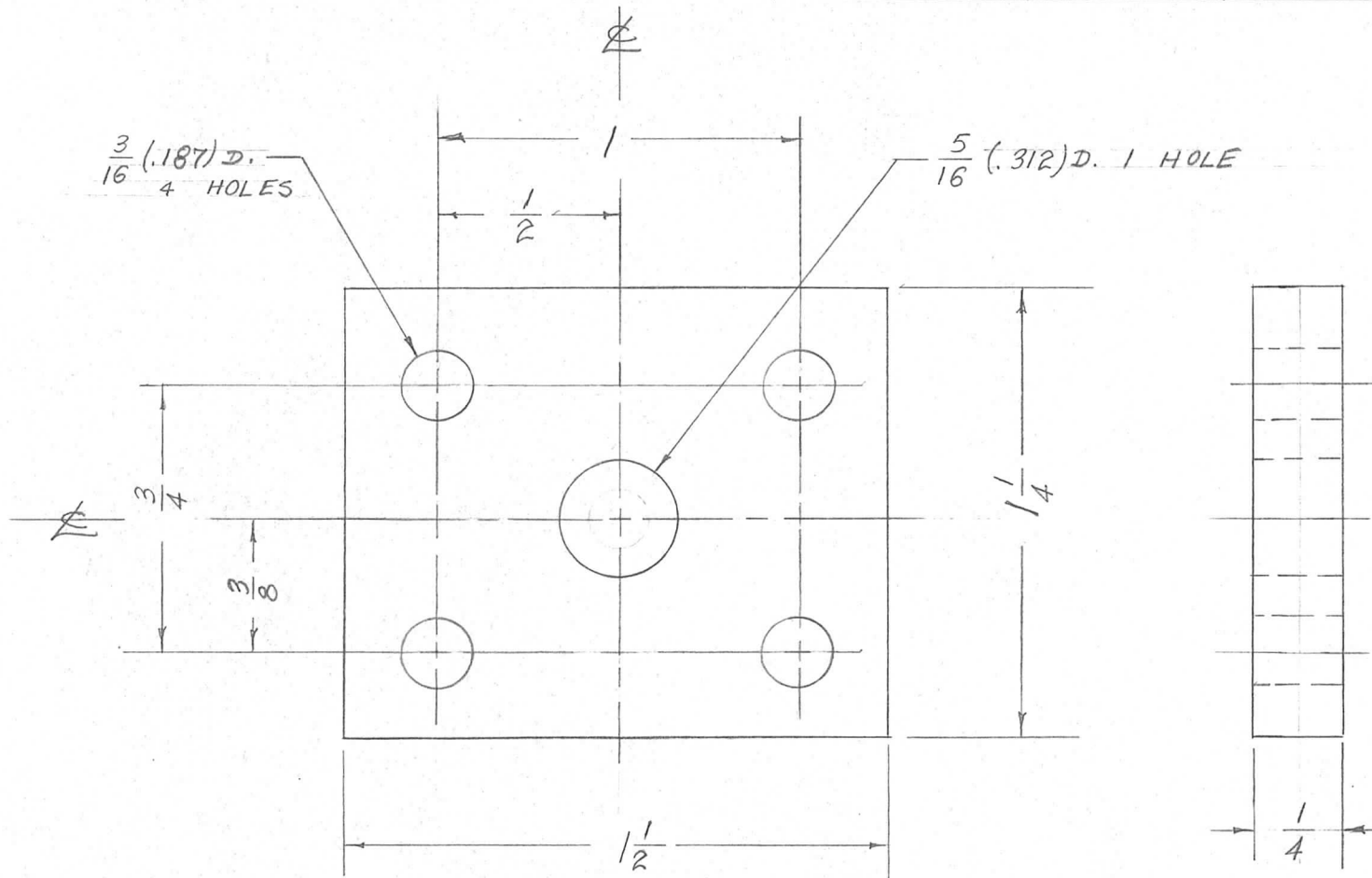
REQ. PER UNIT	USED ON		
	MODEL	ASS'Y. NO.	DATE
8	TER-3500		11-9-55
8	TER-3500-70		10-23-57
8	TER-3500-300	A-2053	2-8-61

PX-314



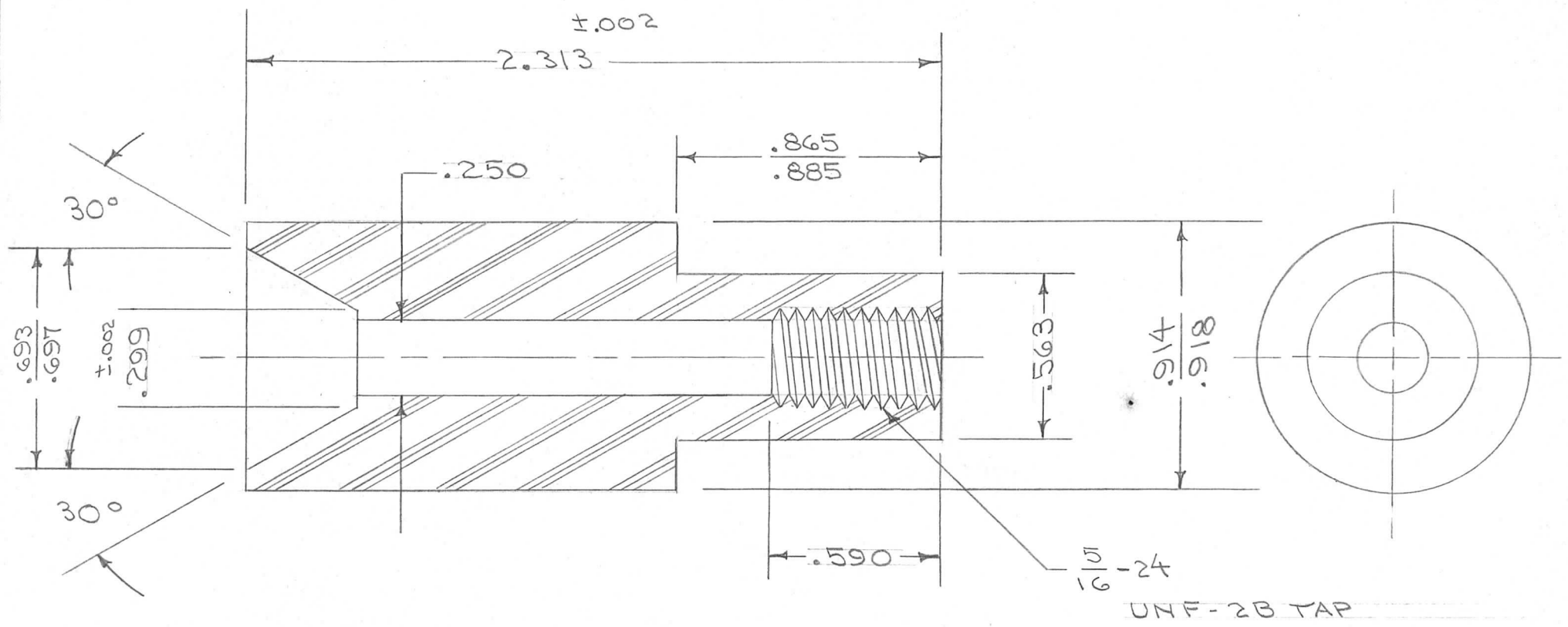
ISSUE	ITEM	CHANGED FROM	DATE	CH. NO.	DRAFTS	CHECKER	ENG. APP.	REQ. ITEM	PART NO.	DESCRIPTION	SYMBOL	
								1/4" THICK		THE TECHNICAL MATERIEL CORP.		
								STOCK SIZE		MAMARONECK, NEW YORK		
								TEFLON		INSIDE SUPPORT, RESISTOR		
								MATERIAL		TER-3500		
										CDP 11-9-55		
										<i>JAD</i>	<i>ARB</i>	
										CHECKED	FINAL APPROVAL	
										<i>WOC</i>	PX-314	
TOLERANCES			SCALE:									
DEC. DIM. ±			MAXIMUM ALLOWABLE TOLERANCES HAVE BEEN DETERMINED AND ANY DEVIATIONS WILL BE CAUSE FOR REJECTION.									
FRAC. DIM. ± 1/64			REMOVE ALL BURRS AND SHARP EDGES									
ANGULAR DIM. ± 1°												
								FINISH & SPEC. NO.		ELEC. DES. APP.	MECH. DES. APP.	

REQ. PER UNIT	USED ON			PX-316
	MODEL	ASS'Y. NO.	DATE	
1	TER-3500		11-29-55	



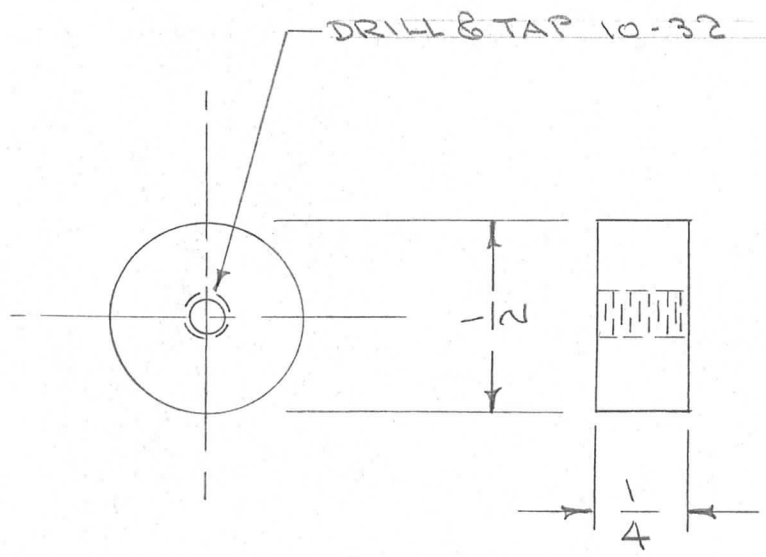
ISSUE	ITEM	CHANGED FROM	DATE	CH. NO.	DRAFTS	CHECKER	ENG. APP.	REQ. ITEM	PART NO.	DESCRIPTION			SYMBOL				
										THE TECHNICAL MATERIEL CORP. MAMARONECK, NEW YORK							
										C.T. INSULATOR							
TOLERANCES								SCALE: 2=1									
DEC. DIM. \pm FRAC. DIM. \pm 1/64 ANGULAR DIM. \pm								MAXIMUM ALLOWABLE TOLERANCES HAVE BEEN DETERMINED AND ANY DEVIATIONS WILL BE CAUSE FOR REJECTION. REMOVE ALL BURRS AND SHARP EDGES									
								TYPE & TEMPER		HEAT TREAT. SPEC.		DRAWN		CHECKED		FINAL APPROVAL	
								FINISH & SPEC. NO.		ELEC. DES. APP.		MECH. DES. APP.		PX-316			

REQ. PER UNIT	USED ON			PX-319
	MODEL	ASS'Y. NO.	DATE	
1	JJ-134		12-15-55	



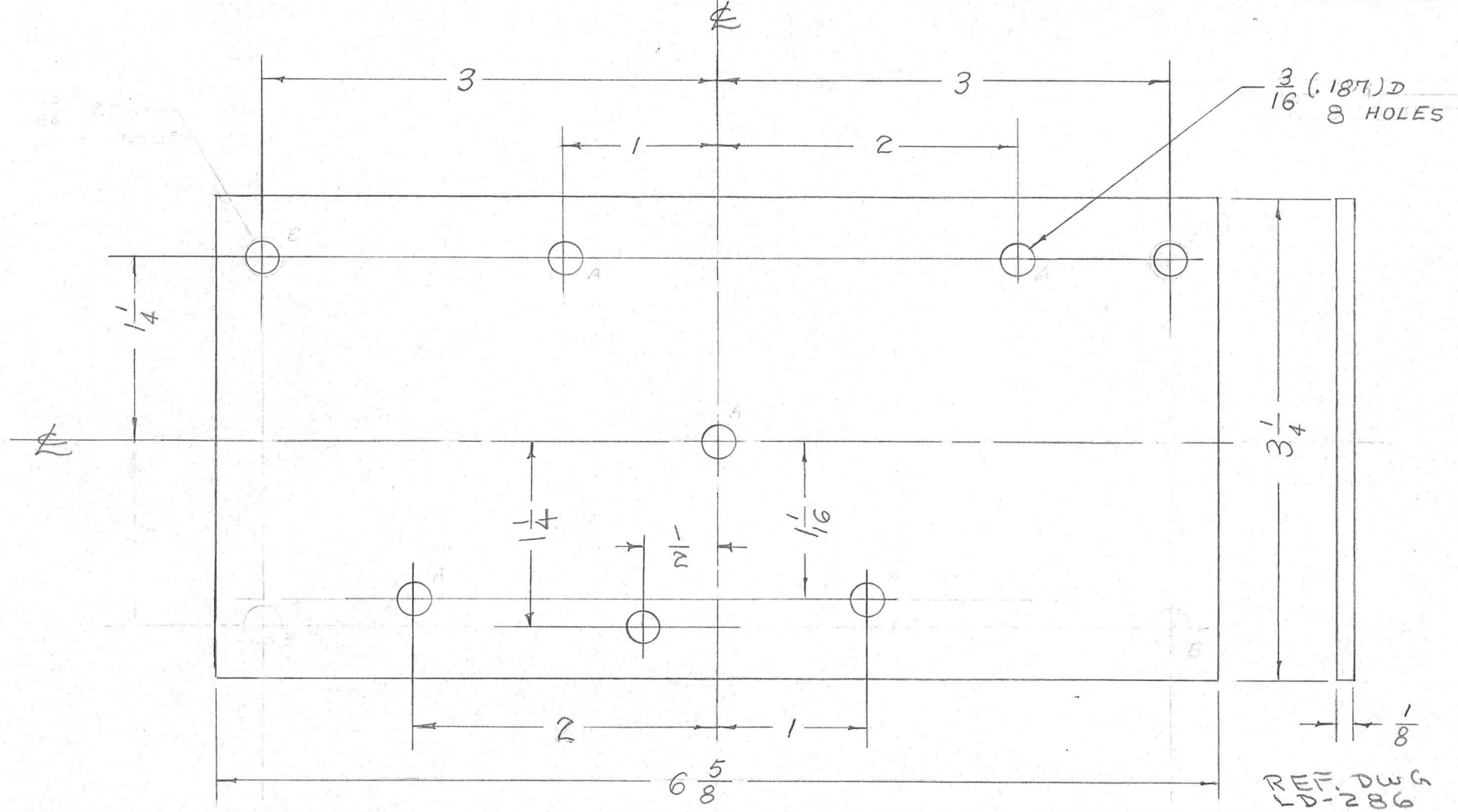
REQ. ITEM	PART NO.	DESCRIPTION	SYMBOL
		THE TECHNICAL MATERIEL CORP. MAMARONECK, NEW YORK	
	STOCK SIZE		
	TEFLON	INSULATOR	
	MATERIAL		
ISSUE	ITEM	CHANGED FROM	DATE
			12-15-55
TOLERANCES		SCALE:	
DEC. DIM. ±		MAXIMUM ALLOWABLE TOLERANCES HAVE BEEN DETERMINED AND ANY DEVIATIONS WILL BE CAUSE FOR REJECTION.	
FRAC. DIM. ±		REMOVE ALL BURRS AND SHARP EDGES	
ANGULAR DIM. ±			
TYPE & TEMPER		HEAT TREAT. SPEC.	DRAWN
FINISH & SPEC. NO.		ELEC. DES. APP.	MECH. DES. APP.
			PX-319

REQ. PER UNIT	USED ON			PX-320
	MODEL	ASS'Y. NO.	DATE	
2	GPR		12-20-55	



REQ.	ITEM	PART NO.	DESCRIPTION				SYMBOL
		1/2 D. ROD	THE TECHNICAL MATERIEL CORP. MAMARONECK, NEW YORK				
		STOCK SIZE	CAP, METER TERMINAL				
		PHENOLIC	GPR				
		MATERIAL					
ISSUE	ITEM	CHANGED FROM	DATE	CH. NO.	DRAFTS	CHECKER	ENG. APP.
TOLERANCES			SCALE:				
DEC. DIM. \pm			MAXIMUM ALLOWABLE TOLERANCES HAVE BEEN DETERMINED AND ANY DEVIATIONS WILL BE CAUSE FOR REJECTION.				
FRAC. DIM. $\pm \frac{1}{64}$			REMOVE ALL BURRS AND SHARP EDGES				
ANGULAR DIM. \pm							
TYPE & TEMPER		HEAT TREAT. SPEC.	DRAWN	CHECKED	FINAL APPROVAL		
BLACK					WDC		
FINISH & SPEC. NO.		ELEC. DES. APP.	MECH. DES. APP.	PX-320			

REQ. PER UNIT	USED ON			PX-321	A
	MODEL	ASS'Y. NO.	DATE		
1	FRAME / CAB		12-30-55		

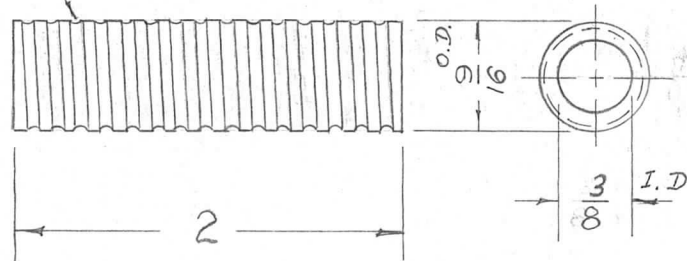


								REQ. ITEM	PART NO.	DESCRIPTION	SYMBOL				
								$\frac{1}{8}$ THICK		THE TECHNICAL MATERIEL CORP.					
								STOCK SIZE		MAMARONECK. NEW YORK					
								PHENOLIC		TERM. BOARD, AC. FILTER					
								MATERIAL		GPT-750					
A	2	HOLES RELOCATED	6/8/56	1	CSB	JAD	WJC								
	1	ONE HOLE DELETED													
ISSUE	ITEM	CHANGED FROM	DATE	CH. NO.	DRAFTS	CHECKER	ENG. APP.	MATERIAL							
TOLERANCES			SCALE:					XXXP		PB 12-30-55	JAD	WJC			
DEC. DIM. \pm			MAXIMUM ALLOWABLE TOLERANCES HAVE BEEN DETERMINED AND ANY DEVIATIONS WILL BE CAUSE FOR REJECTION. REMOVE ALL BURRS AND SHARP EDGES					TYPE & TEMPER	HEAT TREAT. SPEC.	DRAWN	CHECKED	FINAL APPROVAL			
FRAC. DIM. \pm Y64								NATURAL		WJC					
ANGULAR DIM. \pm								FINISH & SPEC. NO.		ELEC. DES. APP.	MECH. DES. APP.				
										PX-321	A				

REQ. PER UNIT	USED ON		PX-323
	MODEL	ASS'Y. NO.	
2	GPR		1-6-56
2	GPR-92		10-29-62

14 THREADS PER INCH
GROOVED FOR 18 GA. WIRE

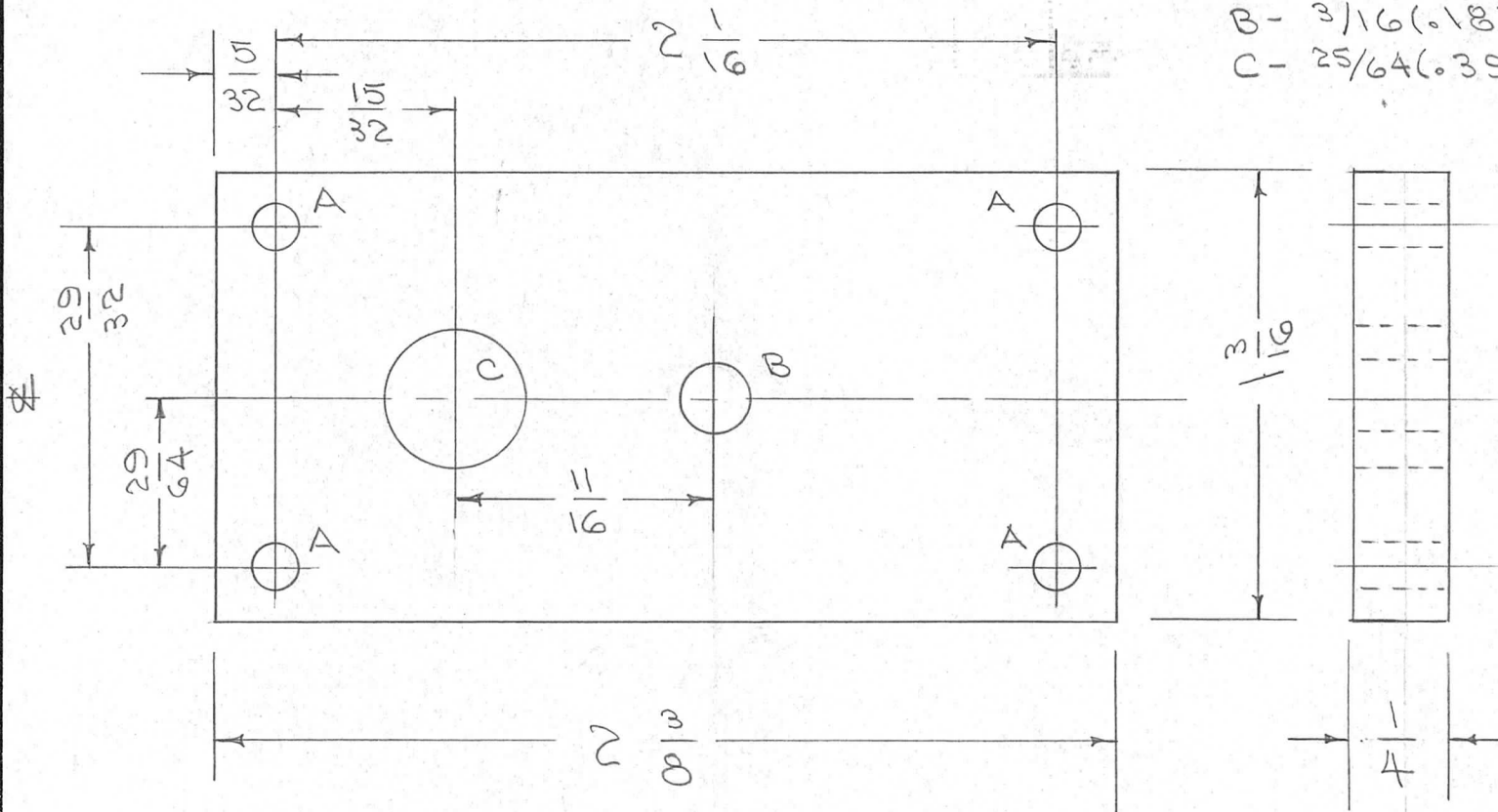
NOTE:
3/8 I.D. MUST BE
CONCENTRIC WITH 9/16 O.D.



ISSUE	ITEM	CHANGED FROM	DATE	CH. NO.	DRAFTS	CHECKER	ENG. APP.	REQ. ITEM	PART NO.	DESCRIPTION	SYMBOL	
								2 T6 D.		THE TECHNICAL MATERIEL CORP. MAMARONECK, NEW YORK		
								STOCK SIZE		COIL FORM, GROOVED		
								STEATITE				
								MATERIAL				
										B 1-6-56	A.J.I.	
										WJC	PX-323	
TOLERANCES			SCALE:									
DEC. DIM. ±			MAXIMUM ALLOWABLE TOLERANCES HAVE BEEN DETERMINED AND ANY DEVIATIONS WILL BE CAUSE FOR REJECTION. REMOVE ALL BURRS AND SHARP EDGES					TYPE & TEMPER	HEAT TREAT. SPEC.	DRAWN	CHECKED	FINAL APPROVAL
FRAC. DIM. ±												
ANGULAR DIM. ±								FINISH & SPEC. NO.	ELEC. DES. APP.	MECH. DES. APP.		

REQ. PER UNIT	USED ON			PX-324	C
	MODEL	ASS'Y. NO.	DATE		
1	RTF		8-23-56		
1	RTF-2	P/A	10-29-58		

A - 1/8 (.125) DIA 4 HOLES
 B - 3/16 (.187) " 1 "
 C - 25/64 (.390) " 1 "

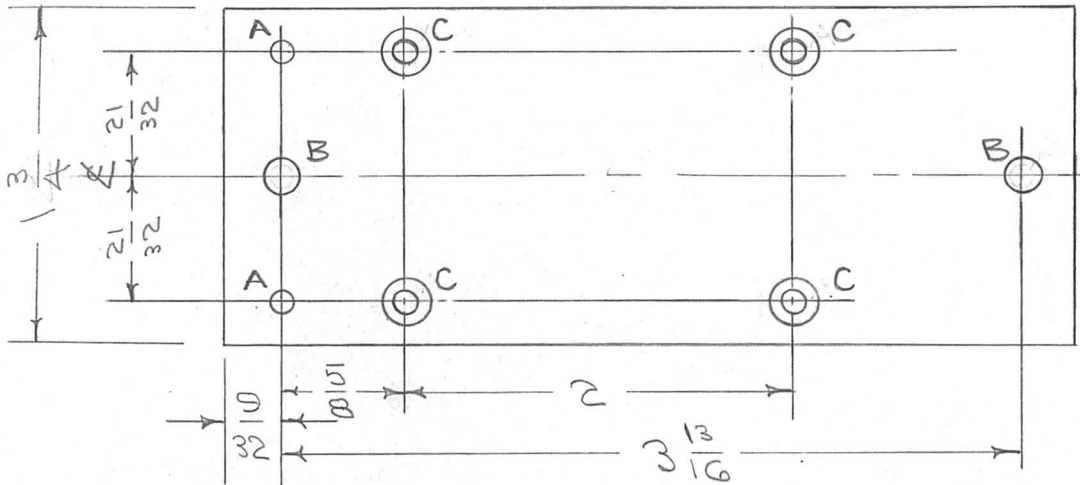
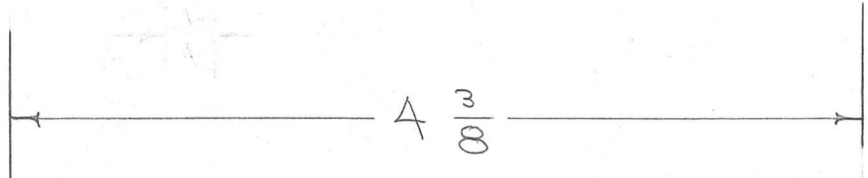


* FUNGUS PROOFING PER TMC SPECIFICATION S-113

REQ. ITEM	PART NO.	DESCRIPTION	SYMBOL
C	S113 ADDED	4-13-64 11186 AM. <i>file</i> <i>923</i>	
B	1 MATL WAS TEFLON	10/29/58 * <i>use file</i> <i>116</i>	
A	1 REDRAWN COMPLETE REVISION	8/23/56 1 <i>OOD</i> <i>file</i> <i>116</i>	
ISSUE	ITEM	CHANGED FROM	DATE CH. NO. DRAFTS CHECKER ENG. APP.
TOLERANCES		SCALE:	
DEC. DIM. ±		MAXIMUM ALLOWABLE TOLERANCES HAVE BEEN DETERMINED AND ANY DEVIATIONS WILL BE CAUSE FOR REJECTION.	
FRAC. DIM. ±		REMOVE ALL BURRS AND SHARP EDGES	
ANGULAR DIM. ±			
1/4 THICK		THE TECHNICAL MATERIEL CORP. MAMARONECK. NEW YORK	
STOCK SIZE		MTG. PLATE, NEUTRALIZER	
PHENOLIC		P/A RTF	
MATERIAL			
LE		OOD 8/23/56 <i>file</i> <i>116</i>	
TYPE & TEMPER		DRAWN	
HEAT TREAT. SPEC.		CHECKED	
NATURAL *		FINAL APPROVAL	
FINISH & SPEC. NO.		ELEC. DES. APP. MECH. DES. APP.	
		PX-324 C	

REQ. PER UNIT	USED ON			PX-325	B
	MODEL	ASS'Y. NO.	DATE		
1	RTF		8-23-56		
1	RTF-2	P/A	11/20/58		

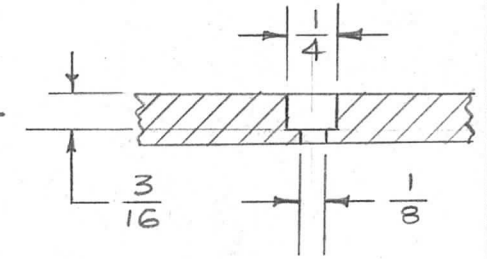
3/4



A - $\frac{1}{8}$ (.125) DIA. 2 HOLES REQ.

B - $\frac{3}{16}$ (.187) DIA. 2 HOLES REQ.

C - 4 HOLES REQ.



ISSUE	ITEM	CHANGED FROM	DATE	CH. NO.	DRAFTS	CHECKER	ENG. APP.
B	2	C HOLE DETAIL ADDED	11/26/56	2	LG	JAD	WE
	1	B HOLES WERE A HOLES					
A	1	REDRAWN COMPLETE REVISION	8/23/56	1	CSO	JAD	WE

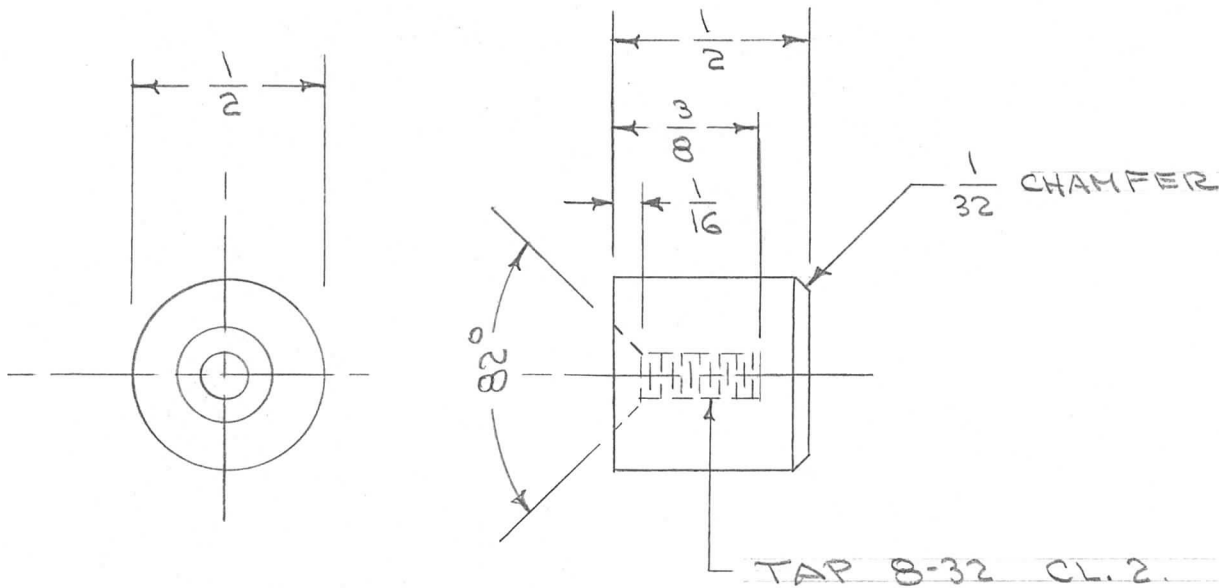
REQ. ITEM	PART NO.	DESCRIPTION	SYMBOL
	1/4 THICK	THE TECHNICAL MATERIEL CORP.	
	STOCK SIZE	MAMARONECK. NEW YORK	
	TEFLON	INSULATOR, NEUTRALIZER	
		P/A.	RTF
		CSO 8/23/56	JAD
			WE
		DRAWN	CHECKED
			FINAL APPROVAL
			PX-325
			B

DEC. DIM. \pm
 FRAC. DIM. $\pm \frac{1}{64}$
 ANGULAR DIM. \pm

SCALE:
 MAXIMUM ALLOWABLE TOLERANCES HAVE BEEN DETERMINED AND ANY DEVIATIONS WILL BE CAUSE FOR REJECTION.
 REMOVE ALL BURRS AND SHARP EDGES

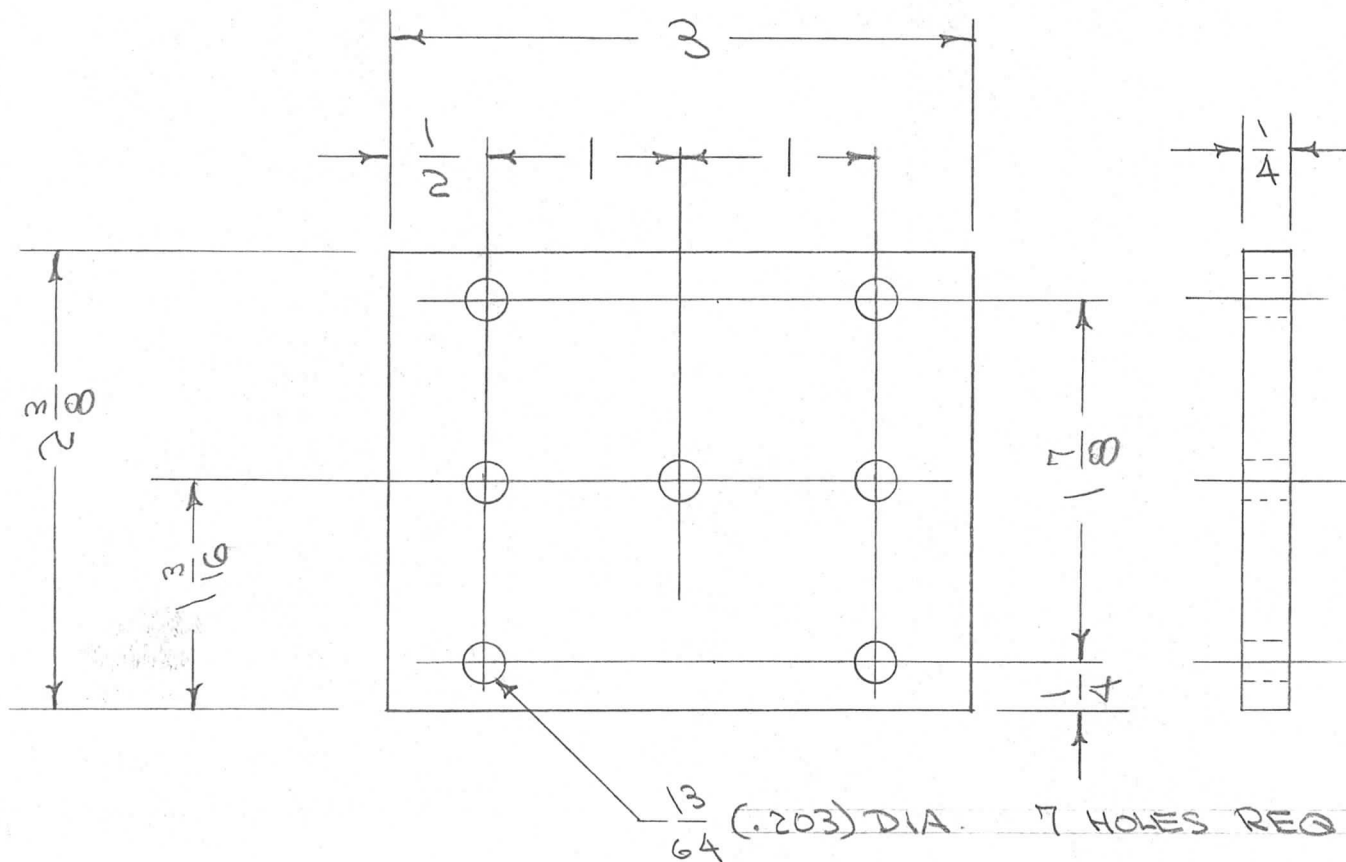
TYPE & TEMPER HEAT TREAT. SPEC. DRAWN CHECKED FINAL APPROVAL
 FINISH & SPEC. NO. ELEC. DES. APP. MECH. DES. APP.

REQ. PER UNIT	USED ON			PX-326
	MODEL	ASSY. NO.	DATE	
1	RTF		2-3-56	



								REQ. ITEM	PART NO.	DESCRIPTION	SYMBOL			
								$\frac{1}{2}$ D. ROD		THE TECHNICAL MATERIEL CORP. MAMARONECK, NEW YORK				
								STOCK SIZE						
								BAKELITE		KNOB, CAP. INC. SWITCH.				
								MATERIAL		POW/AMP				
ISSUE	ITEM	CHANGED FROM	DATE	CH. NO.	DRAFTS	CHECKER	ENG. APP.			CSD 2/3/56	JAD	WD		
TOLERANCES			SCALE:											
DEC. DIM. \pm			MAXIMUM ALLOWABLE TOLERANCES HAVE BEEN DETERMINED AND ANY DEVIATIONS WILL BE CAUSE FOR REJECTION. REMOVE ALL BURRS AND SHARP EDGES											
FRAC. DIM. \pm $\frac{1}{64}$														
ANGULAR DIM. \pm			TYPE & TEMPER											
			HEAT TREAT. SPEC.											
			FINISH & SPEC. NO.											
			DRAWN											
			CHECKED											
			ELEC. DES. APP.											
			MECH. DES. APP.											
														PX-326

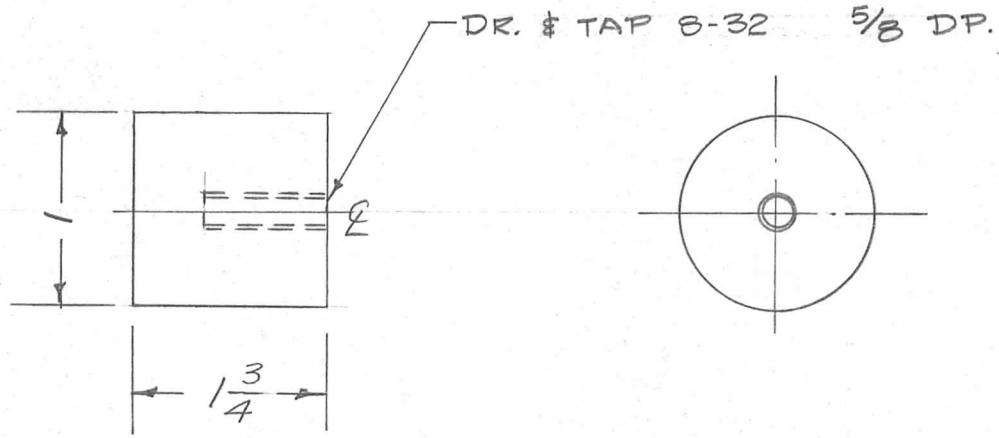
REQ. PER UNIT	USED ON			PX-327
	MODEL	ASS'Y. NO.	DATE	
1	CAB/FRAME		2-9-56	
1	CAB-7		10-24-58	



ISSUE	ITEM	CHANGED FROM	DATE	CH. NO.	DRAFTS	CHECKER	ENG. APP.	REQ. ITEM	PART NO.	DESCRIPTION	SYMBOL		
										THE TECHNICAL MATERIEL CORP. MAMARONECK, NEW YORK			
									1/4 THICK	INSULATOR, R.F. WIPER			
									STOCK SIZE	CAB/FRAME GPT-750			
									TEFLON				
									MATERIAL				
TOLERANCES								SCALE:					
DEC. DIM. \pm								MAXIMUM ALLOWABLE TOLERANCES HAVE BEEN DETERMINED AND ANY DEVIATIONS WILL BE CAUSE FOR REJECTION.					
FRAC. DIM. $\pm \frac{1}{64}$								REMOVE ALL BURRS AND SHARP EDGES					
ANGULAR DIM. \pm													
								TYPE & TEMPER		HEAT TREAT. SPEC.		DRAWN	
												CHECKED	
								FINISH & SPEC. NO.		ELEC. DES. APP.		MECH. DES. APP.	
										CDD 7/9/56		JABO	
												WPC	
										2/9/58		PX-327	

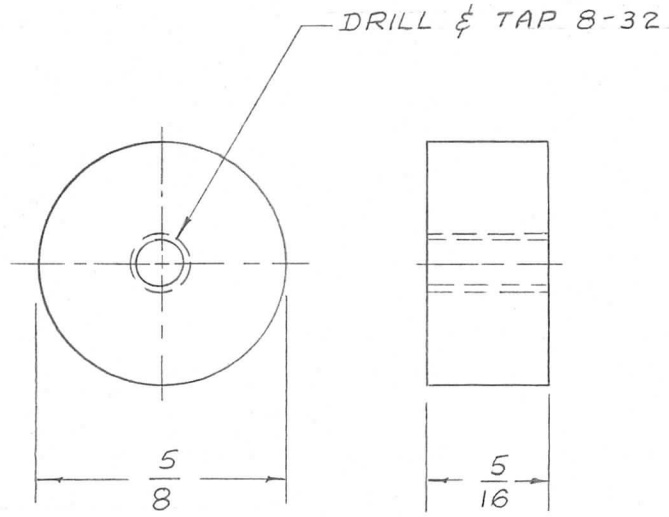
REQ. PER UNIT	USED ON		
	MODEL	ASS'Y. NO.	DATE
1	A-1397		6-13-57
1	SBE-2		5-5-58

PX-328 A



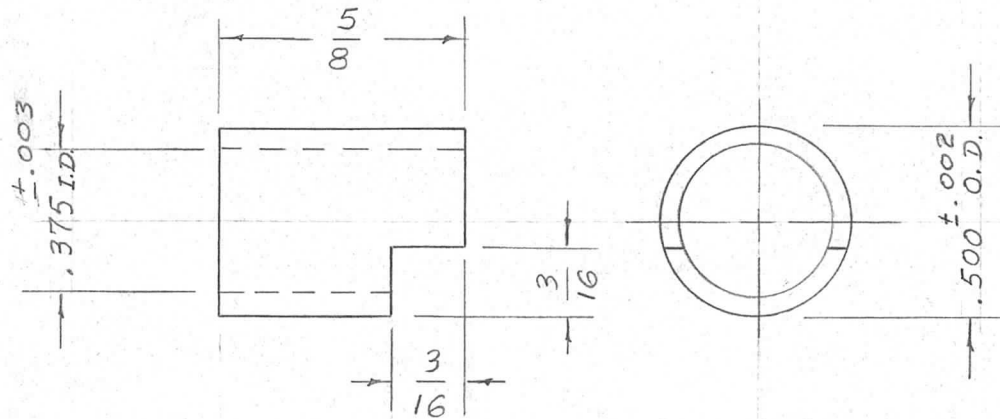
ISSUE	ITEM	CHANGED FROM	DATE	CH. NO.	DRAFTS	CHECKER	ENG. APP.	REQ. ITEM	PART NO.	DESCRIPTION	SYMBOL	
								1" DIA ROD		THE TECHNICAL MATERIEL CORP. MAMARONECK. NEW YORK		
								STOCK SIZE				
A	1	1 3/4 "L" WAS 1"	7/31/57	1	16	<i>[Signature]</i>	<i>[Signature]</i>	PHENOLIC		SPACER, CAPACITOR		
TOLERANCES								MATERIAL				
DEC. DIM. ±			SCALE:					XXXXP		166-13-57	<i>[Signature]</i>	<i>[Signature]</i>
FRAC. DIM. ±			MAXIMUM ALLOWABLE TOLERANCES HAVE BEEN DETERMINED AND ANY DEVIATIONS WILL BE CAUSE FOR REJECTION.					LAMINATE		DRAWN	CHECKED	FINAL APPROVAL
ANGULAR DIM. ±			REMOVE ALL BURRS AND SHARP EDGES					NATURAL				
								FINISH & SPEC. NO.	ELEC. DES. APP.	MECH. DES. APP.	PX-328 A	

REQ. PER UNIT	USED ON			PX-331
	MODEL	ASS'Y. NO.	DATE	
4	CAB. FRAME		2-10-56	
4	CAB-7		10-24-58	



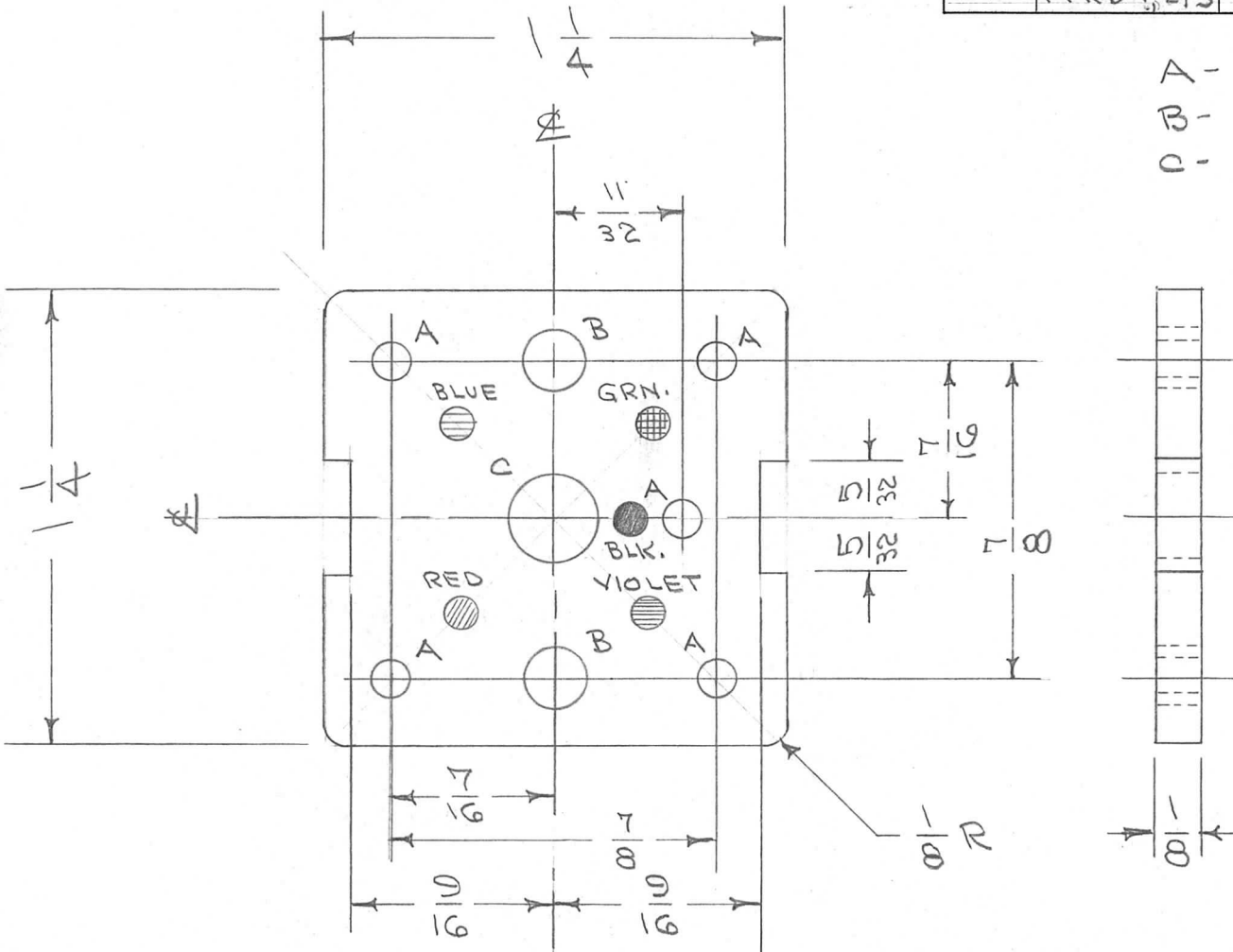
REQ.	ITEM	PART NO.	DESCRIPTION				SYMBOL
		$\frac{5}{8}$ D. x $\frac{5}{16}$ THK.	THE TECHNICAL MATERIEL CORP.				
		STOCK SIZE	MAMARONECK, NEW YORK				
		PHENOLIC	SPRING CENTERING BUSHING				
		MATERIAL					
ISSUE	ITEM	CHANGED FROM	DATE	CH. NO.	DRAFTS	CHECKER	ENG. APP.
TOLERANCES			SCALE:				
DEC. DIM. \pm			MAXIMUM ALLOWABLE TOLERANCES HAVE BEEN DETERMINED AND ANY DEVIATIONS WILL BE CAUSE FOR REJECTION.				
FRAC. DIM. \pm			REMOVE ALL BURRS AND SHARP EDGES				
ANGULAR DIM. \pm							
TYPE & TEMPER		HEAT TREAT. SPEC.	DRAWN	CHECKED	FINAL APPROVAL		
NATURAL					PX-331		
FINISH & SPEC. NO.		ELEC. DES. APP.	MECH. DES. APP.				

REQ. PER UNIT	USED ON			PX-333	A
	MODEL	ASS'Y. NO.	DATE		
	Z	GPR-90	2-15-56		
Z	GPR-90R		2-15-56		



								REQ. ITEM	PART NO.	DESCRIPTION	SYMBOL	
								.500 TUBING		THE TECHNICAL MATERIEL CORP.		
								STOCK SIZE		MAMARONECK, NEW YORK		
								PHENOLIC		TERMINAL CAP, METER		
								MATERIAL		GPR		
A	1	FINISH WAS NATURAL	2/7/57	1	MIR	MIR	ONE					
ISSUE	ITEM	CHANGED FROM	DATE	CH. NO.	DRAFTS	CHECKER	ENG. APP.					
TOLERANCES			SCALE:									
DEC. DIM. \pm			MAXIMUM ALLOWABLE TOLERANCES HAVE BEEN DETERMINED AND ANY DEVIATIONS WILL BE CAUSE FOR REJECTION.									
FRAC. DIM. \pm			REMOVE ALL BURRS AND SHARP EDGES									
ANGULAR DIM. \pm												
								TYPE & TEMPER	HEAT TREAT. SPEC.	DRAWN	CHECKED	FINAL APPROVAL
								XXXXP LAMINATE	— # —	B 2-15-56	JAW	W
								BLACK			W	PX-333
								FINISH & SPEC. NO.	ELEC. DES. APP.	MECH. DES. APP.		A

REQ. PER UNIT	USED ON			PX-33A
	MODEL	ASS'Y. NO.	DATE	
1	FFRD-1,2,3	A-1247	3-15-56	

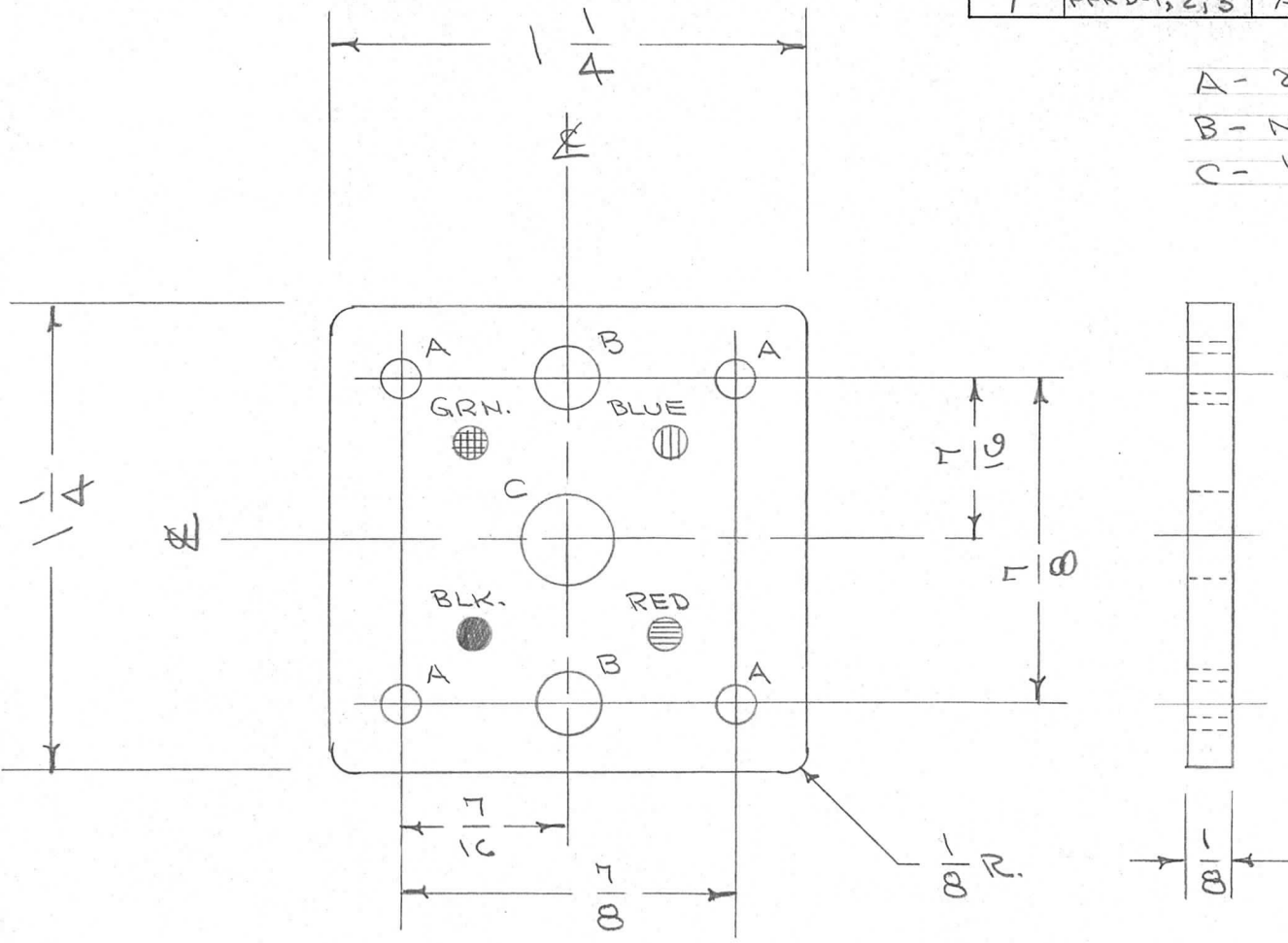


A - 2.9 M.M. (.114) DIA. 5 REQ.
 B - No. 12 (.189) " 2 "
 C - 1/4 (.250) DIA. 1 "

COLOR CODE DOTS
 APPROX. 1/8 DIA.

ISSUE	ITEM	CHANGED FROM	DATE	CH. NO.	DRAFTS	CHECKER	ENG. APP.	REQ. ITEM	PART NO.	DESCRIPTION	SYMBOL	
								1/8 THK.		THE TECHNICAL MATERIEL CORP. MAMARONECK, NEW YORK		
								STOCK SIZE				
								PHENOLIC		I.F. TERMINAL BOARD,		
										XTAL FILTER		
								XXXXP LAMINATE		CDD. 3/15/56		
TOLERANCES			SCALE:					TYPE & TEMPER	HEAT TREAT. SPEC.	DRAWN	CHECKED	FINAL APPROVAL
DEC. DIM. ±			MAXIMUM ALLOWABLE TOLERANCES HAVE BEEN DETERMINED AND ANY DEVIATIONS WILL BE CAUSE FOR REJECTION. REMOVE ALL BURRS AND SHARP EDGES					NATURAL		P.L.K. 3-27-56		PX-33A
FRAC. DIM. ± 1/64												
ANGULAR DIM. ±												

REQ. PER UNIT	USED ON			PX-335
	MODEL	ASS'Y. NO.	DATE	
1	FFRD-1,2,3	A-1250	3-15-56	



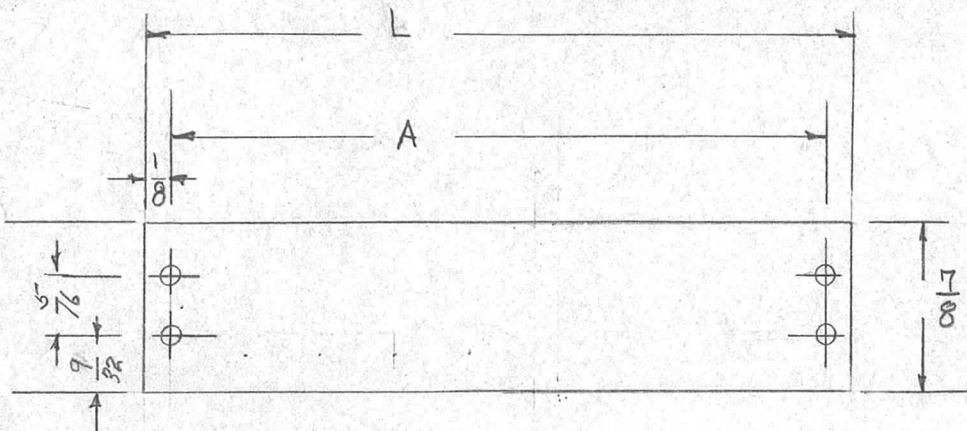
- A - 2.9 M.M. (.114) DIA. 4 REQ.
- B - No. 12 (.189) " 2 "
- C - 1/4 (.250) " 1 "

COLOR CODE DOTS
APPROX. 1/8 DIA.

REQ. ITEM	PART NO.	DESCRIPTION	SYMBOL				
	1/8 THK.	THE TECHNICAL MATERIEL CORP. MAMARONECK, NEW YORK					
	STOCK SIZE						
	PHENOLIC	TERMINAL BOARD, XTAL. FILTER OUTPUT TANK					
	MATERIAL						
ISSUE	ITEM	CHANGED FROM	DATE	CH. NO.	DRAFTS	CHECKER	ENG. APP.
TOLERANCES		SCALE:					
DEC. DIM. ±		MAXIMUM ALLOWABLE TOLERANCES HAVE BEEN DETERMINED AND ANY DEVIATIONS WILL BE CAUSE FOR REJECTION. REMOVE ALL BURRS AND SHARP EDGES					
FRAC. DIM. ± 1/64							
ANGULAR DIM. ±							
TYPE & TEMPER		HEAT TREAT. SPEC.	DRAWN	CHECKED	FINAL APPROVAL		
NATURAL			P.L.K. 3-2756	WPK	PX-335		
FINISH & SPEC. NO.		ELEC. DES. APP.	MECH. DES. APP.				

STANDARD DRAWING

REQ. PER UNIT	USED ON		PX-336	A
	MODEL	ASS'Y. NO.		



4 holes Req'd 9/32

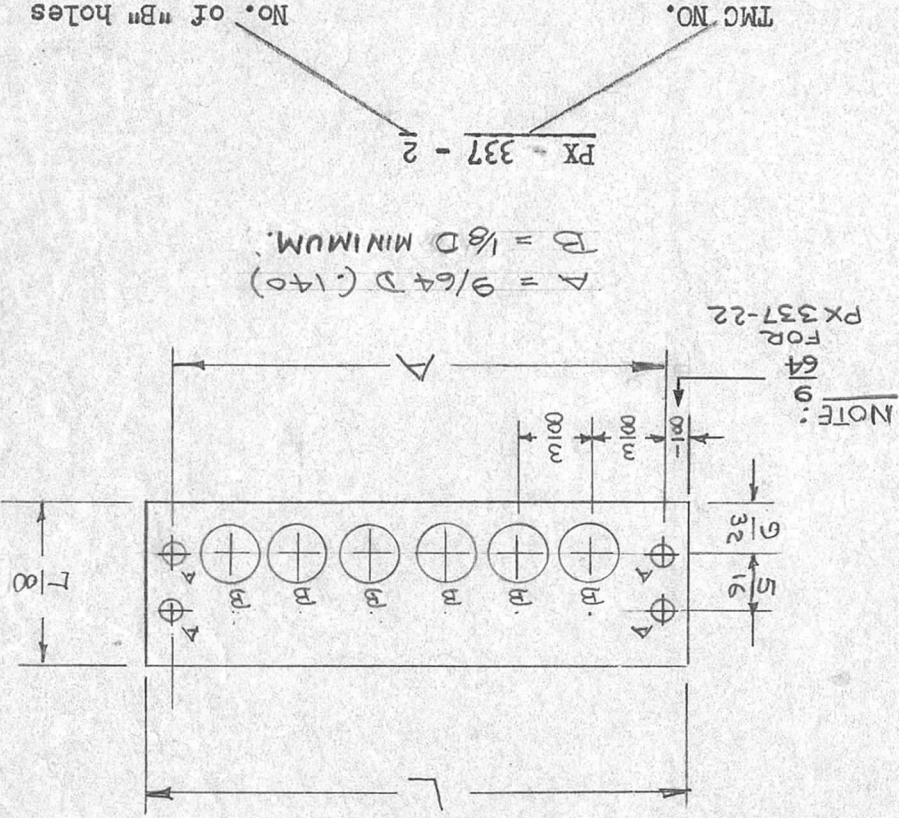
TMC No.	"A"	L
PX-336-2	1/8	1 3/8
PX -3	1/2	1 3/4
PX -4	1 7/8	2 1/8
PX -5	2 1/4	2 1/2
PX -6	2 5/8	2 7/8
PX -7	3	3 1/4
PX -8	3 3/8	3 5/8
PX -9	3 3/4	4
PX -10	4 1/8	4 3/8
PX -11	4 1/2	4 3/4
PX -12	4 7/8	5 1/8
PX -13	5 1/4	5 1/2
PX -14	5 5/8	5 7/8
PX -15	6	6 1/4
PX -16	6 3/8	6 5/8
PX -17	6 3/4	7
PX -18	7 1/8	7 3/8
PX -19	7 1/2	7 3/4
PX -20	7 7/8	8 1/8
PX -21	8 1/4	8 1/2

Ref TMC DWG TM-102

ISSUE	ITEM	CHANGED FROM	DATE	CH. NO.	DRAFTS	CHECKER	ENG. APP.	REQ. ITEM	PART NO.	DESCRIPTION	SYMBOL	
								1/32		THE TECHNICAL MATERIEL CORP. MAMARONECK, NEW YORK	INSULATOR, TERMINAL STRIP BARRIER Type	
								Stock Size				
A	-	OR FIBER ADD TO MATL.	10/8/65	14950		A.V.V.	JCB	Phenolic OR Fiber				
TOLERANCES								SCALE:				
DEC. DIM. ± FRAC. DIM. ± ANGULAR DIM. ±								MAXIMUM ALLOWABLE TOLERANCES HAVE BEEN DETERMINED AND ANY DEVIATIONS WILL BE CAUSE FOR REJECTION. REMOVE ALL BURRS AND SHARP EDGES				
								TYPE & TEMPER	HEAT TREAT. SPEC.	DRAWN	CHECKED	FINAL APPROVAL
								BLACK				PX-336
								FINISH & SPEC. NO.	ELEC. DES. APP.	MECH. DES. APP.		A

STANDARD DRAWING

TMC NO	"A"	"L"
PX-337-2	1 1/8	1 3/8
-3	1 1/2	1 3/4
-4	1 7/8	2 1/8
-5	2 1/4	2 1/2
-6	2 5/8	2 7/8
-7	3	3 1/4
-8	3 3/8	3 5/8
-9	4	4
-10	4 1/8	4 3/8
-11	4 1/2	4 3/4
-12	4 7/8	5 1/8
-13	5 1/4	5 1/2
-14	5 5/8	5 7/8
-15	6	6 1/4
-16	6 3/8	6 5/8
-17	6 3/4	7
-18	7 1/8	7 3/8
-19	7 1/2	7 3/4
-20	7 7/8	8 1/8
-21	8 1/4	8 1/2
-22	8 5/8	8 29/32



REQ. PER UNIT

1 AMD-1
1 AMD-2

USED ON

MODEL ASS'Y. NO. DATE
AMD-1
4/25/58

PX-337

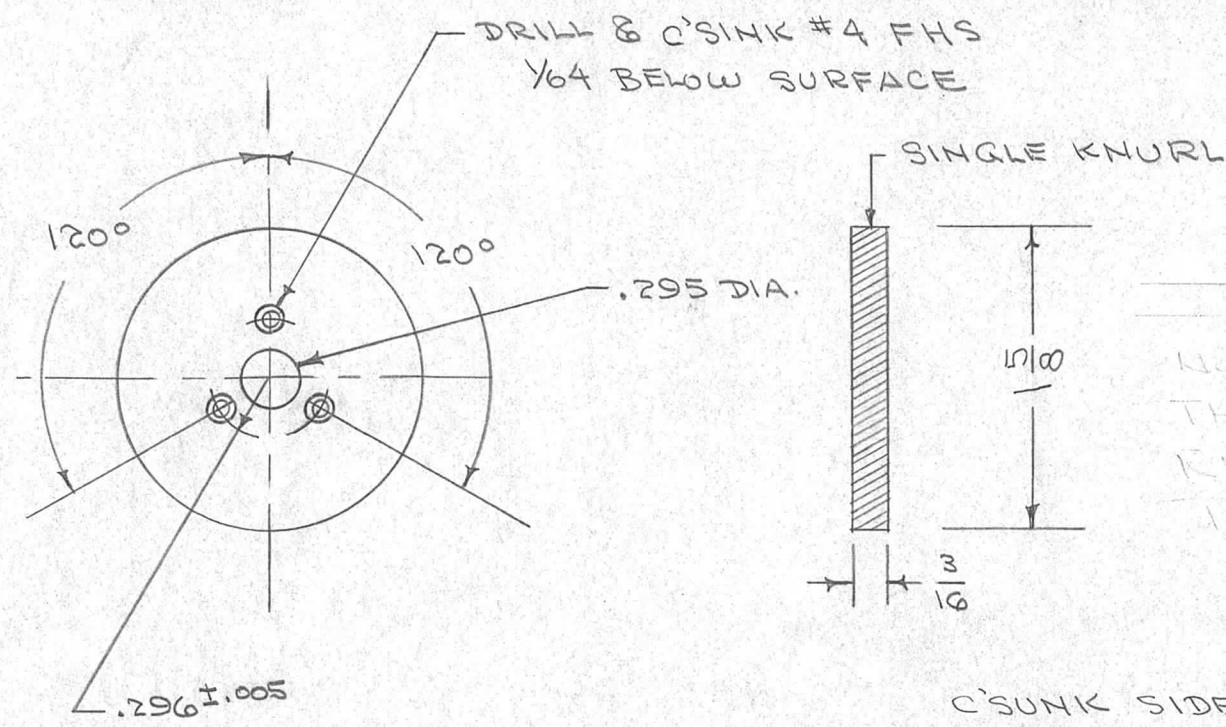
E

DEC. DIM. ±		FRAC. DIM. ±		ANGULAR DIM. ±	
MAXIMUM ALLOWABLE TOLERANCES HAVE BEEN DETERMINED AND ANY DEVIATIONS WILL BE CAUSE FOR REJECTION. REMOVE ALL BURRS AND SHARP EDGES					
TOLERANCES					
SCALE:					
ISSUE ITEM	CHANGED FROM	DATE	CH. NO.	DRAFTS	CHECKER
A	1 REF WAS TM-102	8/1/56	1	AW	WJ
B	1 "A" length clarified	10/23/56	2	AW	WJ
C	1 Reinstated, WAS Omitted.	5-26-60	2356	WJ	WJ
D	1-2 PX-337-22 Add. TYPE 3 TEMPER WAS XXX PHENOLIC	8-31-64	12256	WJ	WJ
E	1 "B" HOLE WAS 5/16 D	10/8/65	14950	WJ	WJ

REQ. ITEM	PART NO.	DESCRIPTION	SYMBOL
	TMC DMG	Ref: TMC DMG	
	TM-100		
		THE TECHNICAL MATERIEL CORP. MAMARONECK, NEW YORK	
		Insulator, Terminal Strip	
		Barrier Lug Type	
		Material	
		Heat Treat. Spec.	
		Type & Temper	
		Finish & Spec. No.	
		Elec. Des. App.	
		Mech. Des. App.	
		Checked	
		Drawn	
		Final Approval	
		PX-337	

REQ. PER UNIT	USED ON		
	MODEL	ASS'Y. NO.	DATE
1	RTF (271)		6-14-56
1	PM0-1 (285)		"
1	PM0-2 (")		"
1	VOX-1 (291)		"
1	VOX-2 (")		"

PX-340 B

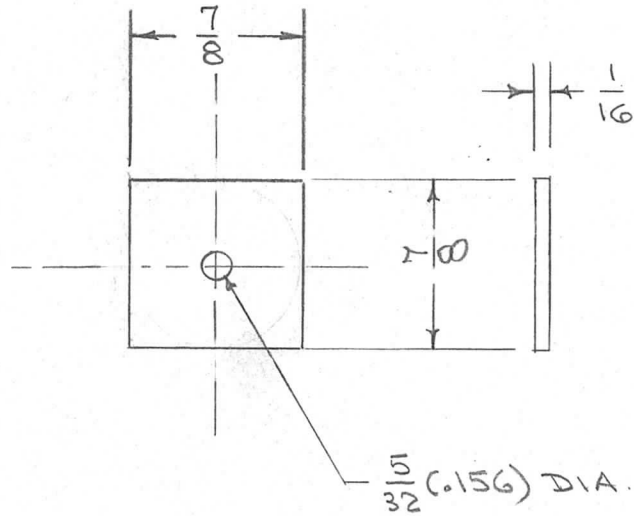


NOTES:
THIS DRAWING HAS BEEN REVISIONED TO REFLECT THE FOLLOWING CHANGES:

C'SUNK SIDE MUST BE FREE OF ANY MARS.

ISSUE	ITEM	CHANGED FROM	DATE	CH. NO.	DRAFTS	CHECKER	ENG. APP.	REQ. ITEM	PART NO.	DESCRIPTION	SYMBOL	
B	1	OXIDIZE WAS BLACK NICKEL	3-4-57	2	SC.	JAL	AMP			THE TECHNICAL MATERIEL CORP. MAMARONECK, NEW YORK		
A	1	MAT. WAS BAKELITE	10/10/56	1	JAL	CDD	WDC				KNOB, CALIBRATE CONTROL LOCK	
TOLERANCES								2017-T4				
SCALE:								CDD 61456				
DEC. DIM. ±								TYPE & TEMPER				
FRAC. DIM. ± 1/64								HEAT TREAT. SPEC.				
ANGULAR DIM. ± 1°								OXIDIZE, BLACK				
MAXIMUM ALLOWABLE TOLERANCES HAVE BEEN DETERMINED AND ANY DEVIATIONS WILL BE CAUSE FOR REJECTION.								DRAWN				
REMOVE ALL BURRS AND SHARP EDGES								CHECKED				
								FINISH & SPEC. NO.				
								ELEC. DES. APP.				
								MECH. DES. APP.				
								PX-340				B

REQ. PER UNIT	A59			USED ON		PX-341	A
	MODEL	ASS'Y. NO.	DATE				
2	GSB-1	A-1361	6-18-56				



ISSUE	ITEM	CHANGED FROM	DATE	CH. NO.	DRAFTS	CHECKER	ENG. APP.	REQ. ITEM	PART NO.	DESCRIPTION	SYMBOL	
										THE TECHNICAL MATERIEL CORP. MAMARONECK, NEW YORK		
									1/16 THICK STOCK SIZE	INSULATION, TOROID MTG.		
A	1	WAS 7/8" DIA.	7/23/56	1	JAN	WDC			PHENOLIC MATERIAL	GSB-1		
TOLERANCES			SCALE:					XXXP LAMINATE	COO 6/18/56	JAN	WDC	
DEC. DIM. ± FRAC. DIM. ± 1/16 ANGULAR DIM. ±			MAXIMUM ALLOWABLE TOLERANCES HAVE BEEN DETERMINED AND ANY DEVIATIONS WILL BE CAUSE FOR REJECTION. REMOVE ALL BURRS AND SHARP EDGES					NATURAL		WDC		
								FINISH & SPEC. NO.	ELEC. DES. APP.	MECH. DES. APP.	PX-341	A

IF IT IS FOUND DESIRABLE TO CHANGE ANY TOLERANCE OR OTHER DETAIL SPECIFIED ON THIS DRAWING NOTIFY THE PURCHASER PROMPTLY.

STANDARD DRAWING

PX-342 B

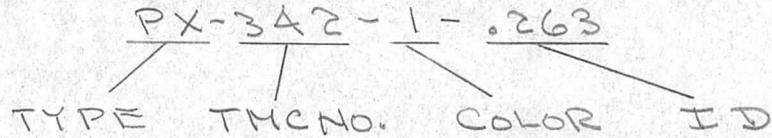
MAXIMUM ALLOWABLE TOLERANCES HAVE BEEN DETERMINED AND DEVIATIONS WILL BE CAUSE FOR REJECTION. REMOVE ALL BURRS AND SHARP EDGES

USED ON

MODEL	PROJECT NO.	ASS'Y. NO.	DATE
-------	-------------	------------	------

TMC NO.	CAT. NO.	GUAGE SIZE	APPROX. I. D.
PX-342		20	.034
		18	.042
		16	.053
		14	.066
		12	.085
		10	.106
		8	.135
		6	.166
		4	.208
		2	.263
		1	.294

TYPE DESIGNATION TO BE IN FOLLOWING FORM.



SLEEVING - FIBERGLASS BRAID, COATED INSIDE AND OUTSIDE WITH VARNISH. AVER. DIELECTRIC STRENGTH - 5000 V. MAX. "HOTTEST SPOT" TEMP. - 130° C

COLOR	CODE
BLACK	0
BROWN	1
RED	2
ORANGE	3
YELLOW	4
GREEN	5
BLUE	6
WHITE	9

REF:

REQ.	ITEM	PART NO.	DESCRIPTION	SYMBOL
			THE TECHNICAL MATERIEL CORP. MAMARONECK. NEW YORK	
		STOCK SIZE	INSULATION, SLEEVING	
		MATERIAL WEIGHT PER PC.	FIBERGLASS	
		TYPE & TEMPER	CDD	WOC
		HEAT TREAT. SPEC.	DRAWN JAD 7/19/56	ELEC. DES. APP. MECH. DES. APP. A.J.J.
		FINISH & SPEC. NO.	CHECKED	FINAL APPROVAL PX-342 B

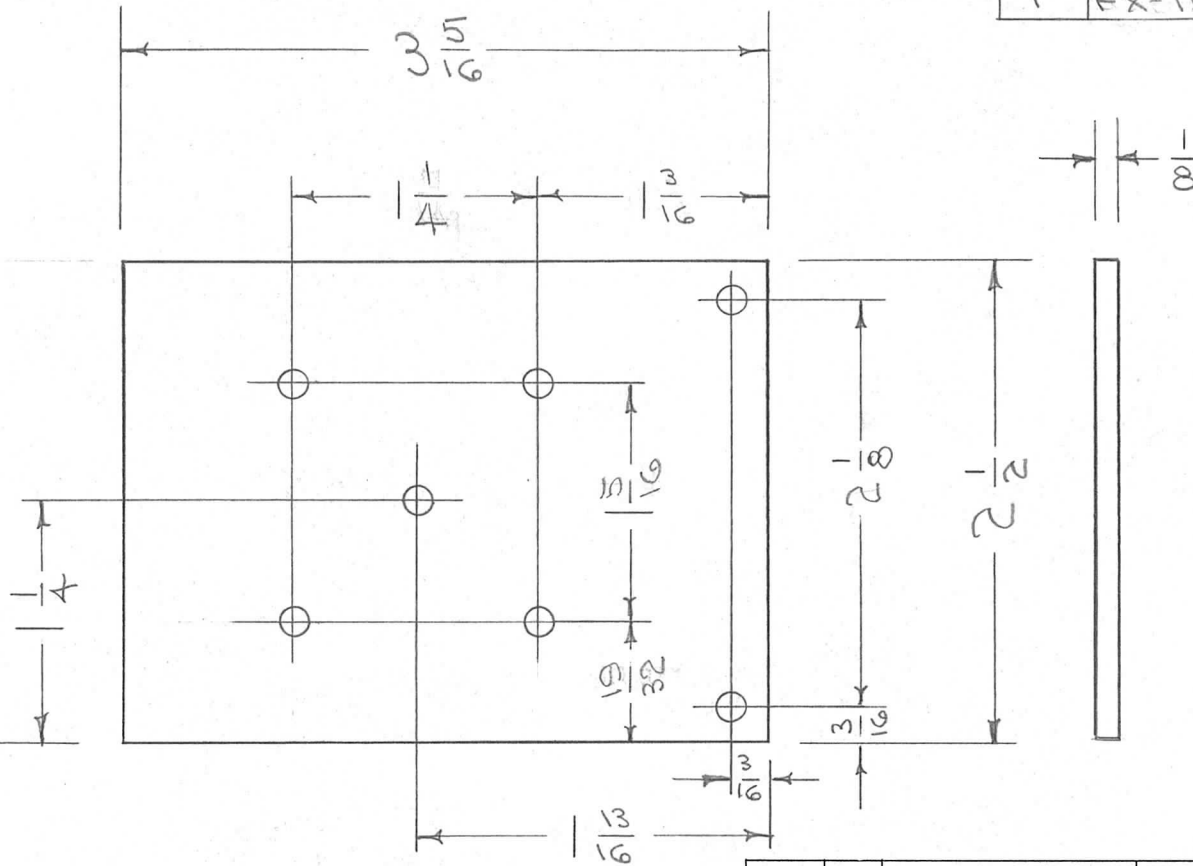
B	1	ADDED ON CHART .294 I.D.	G-1763	9253	E	YAS	A.J.J.
A	1	DELETED CAT. No's ? REF. TO BIRN BACH -	4/8/58	1	WOC	file	A.J.J.
ISSUE	ITEM	CHANGED FROM	DATE	CN. NO.	DRAFTS	CHECKER	ENG. APP.
TOLERANCES			SCALE				
ALL OTHERS	DEC. DIM. ± FRAC. DIM. ± ANGULAR DIM. ±		DRILL, PUNCH, COMMERCIAL STOCK SIZES AND MANUFACTURERS TOLERANCES ARE NOT INCLUDED.				

IF IT IS FOUND DESIRABLE TO CHANGE ANY TOLERANCE OR OTHER DETAIL SPECIFIED ON THIS DRAWING NOTIFY THE PURCHASER PROMPTLY.

PX-343 A

MAXIMUM ALLOWABLE TOLERANCES HAVE BEEN DETERMINED AND DEVIATIONS WILL BE CAUSE FOR REJECTION.
REMOVE ALL BURRS AND SHARP EDGES

REQ. PER UNIT	USED ON			
	MODEL	PROJECT NO.	ASS'Y. NO.	DATE
1	FX-150	459		8/15/36



HOLES
11/64 (17/16 DIA)
7 REQ'D

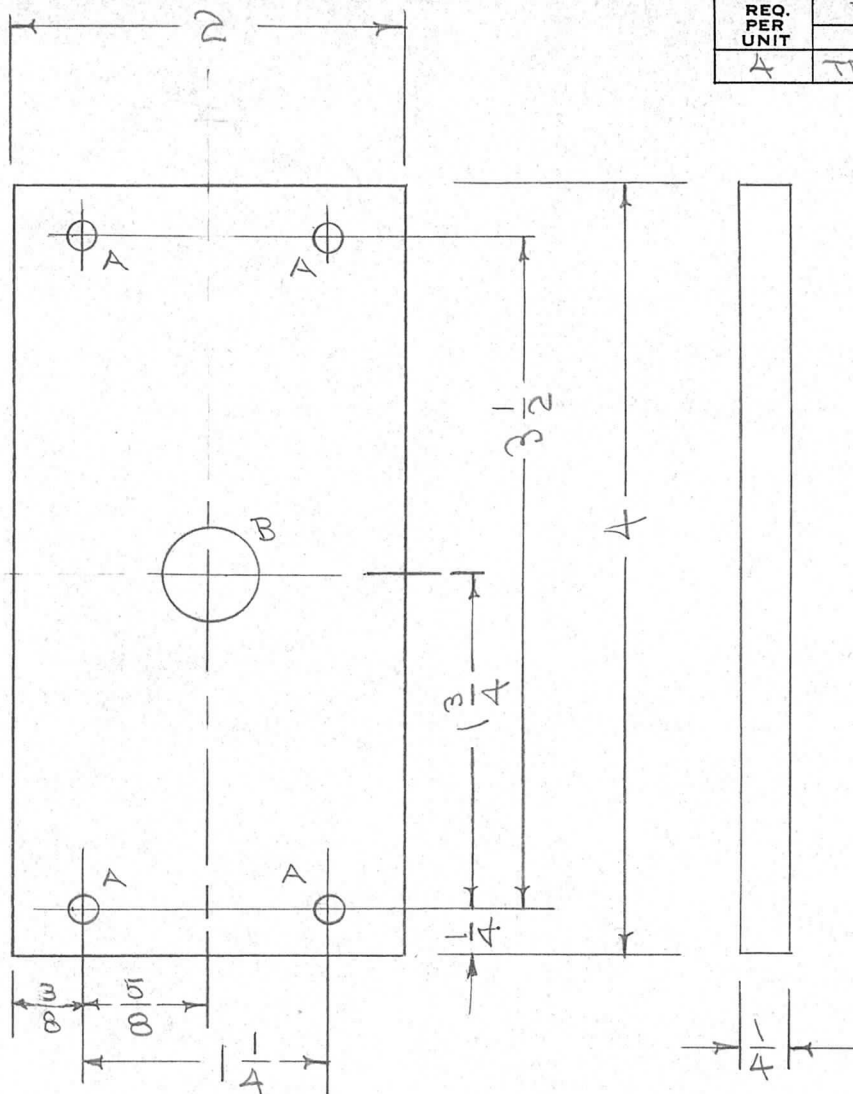
* FUNGUS PROOFING PER TMC SPECIFICATION S-113

REQ.	ITEM	PART NO.	DESCRIPTION	SYMBOL
			1/8 THICK	
			STOCK SIZE	
			PHENOLIC	
			MATERIAL	
			WEIGHT PER PC.	
			XXXX LAMINATE	
			TYPE & TEMPER	
			HEAT TREAT. SPEC.	
			NATURAL.*	
			FINISH & SPEC. NO.	
			THE TECHNICAL MATERIEL CORP. MAMARONECK, NEW YORK	
			COIL MOUNTING BOARD	
			FX-150	
			ADD. 8/15/36	
			R.S.	
			DRAWN	
			ELEC. DES. APP.	
			MECH. DES. APP.	
			CHECKED	
			FINAL APPROVAL	
			PX-343	A

A	S113 ADDED	4/13/64	11186	A.M.	file	OS	
ISSUE	ITEM	CHANGED FROM	DATE	CN. NO.	DRAFTS	CHECKER	ENG. APP.

TOLERANCES		SCALE
ALL OTHERS	DEC. DIM. ± FRAC. DIM. ± 1/64 ANGULAR DIM. ±	DRILL, PUNCH, COMMERCIAL STOCK SIZES AND MANUFACTURERS TOLERANCES ARE NOT INCLUDED.

REQ. PER UNIT	529	USED ON		PX-344	B
	A	MODEL	ASS'Y. NO.		
	TER-500			8-20-56	



A - 5/32 (.156) DIA.
 B - 17/32 (.531) "

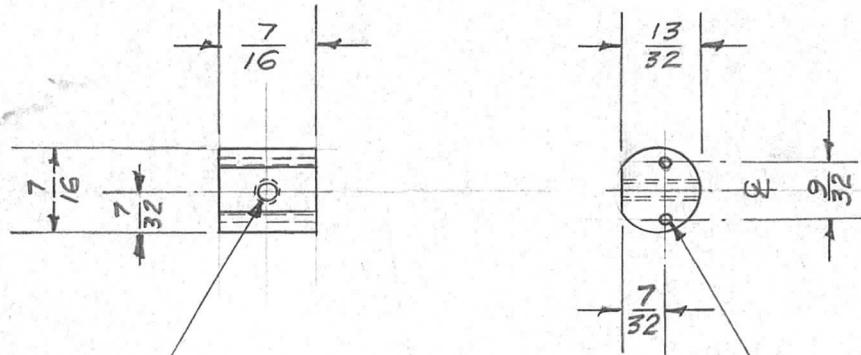
4 REQ.
 1 " "

* FUNGUS PROOFING PER
 TMC SPECIFICATION S-113

REQ.	ITEM	PART NO.	DESCRIPTION				SYMBOL
		1/4 THK.	THE TECHNICAL MATERIEL CORP.				
		STOCK SIZE	MAMARONECK. NEW YORK				
B	"B" HOLE WAS 1/2	2.3.67 17778 WFO	MOUNT, RESISTOR INSULATOR				
A	S113 ADDED	4/13/64 11186 A.M.	TER-500				
ISSUE	ITEM	CHANGED FROM	DATE	CH. NO.	DRAFTS	CHECKER	ENG. APP.
TOLERANCES			SCALE:				
DEC. DIM. ±			MAXIMUM ALLOWABLE TOLERANCES HAVE BEEN DETERMINED AND ANY DEVIATIONS WILL BE CAUSE FOR REJECTION.				
FRAC. DIM. ± 1/64			REMOVE ALL BURRS AND SHARP EDGES				
ANGULAR DIM. ±							
LE		DRAWN		CHECKED		FINAL APPROVAL	
NATURAL *		ELEC. DES. APP.		MECH. DES. APP.		PX-344 B	
FINISH & SPEC. NO.							

REQ. PER UNIT	USED ON		
	MODEL	ASS'Y. NO.	DATE
1	VOX-1,2	A-1236	2-13-57
1	PMO-1,2	A-1236	2-13-57
1	RTF	A-1236	2-13-57
1	RTF-2		11-10-58

PX-356



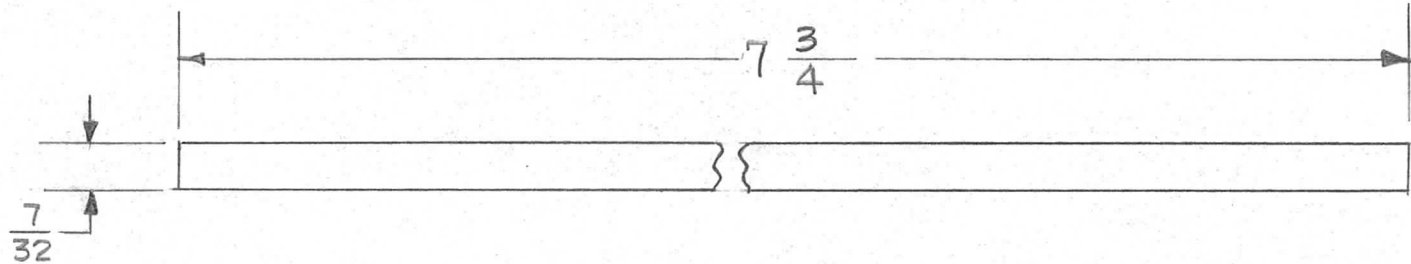
Dr. & Tap for 4-40 CL. 2 #56 Dr. (.046) D. 2 Req.

ISSUE	ITEM	CHANGED FROM	DATE	CH. NO.	DRAFTS	CHECKER	ENG. APP.	REQ. ITEM	PART NO.	DESCRIPTION	SYMBOL	
								7/16 DIA.		THE TECHNICAL MATERIEL CORP. MAMARONECK, NEW YORK		
								STOCK SIZE				
								Phenolic			SUPPORT, THERMOSTAT	
								MATERIAL				
								LAMINATE XXXP	—H—	162-13-57	<i>[Signature]</i>	<i>[Signature]</i>
								TYPE & TEMPER	HEAT TREAT. SPEC.	DRAWN	CHECKED	FINAL APPROVAL
								Natural				PX-356
								FINISH & SPEC. NO.		ELEC. DES. APP.	MECH. DES. APP.	

DEC. DIM. ±
FRAC. DIM. ±
ANGULAR DIM. ±

MAXIMUM ALLOWABLE TOLERANCES HAVE BEEN DETERMINED AND ANY DEVIATIONS WILL BE CAUSE FOR REJECTION.
REMOVE ALL BURRS AND SHARP EDGES

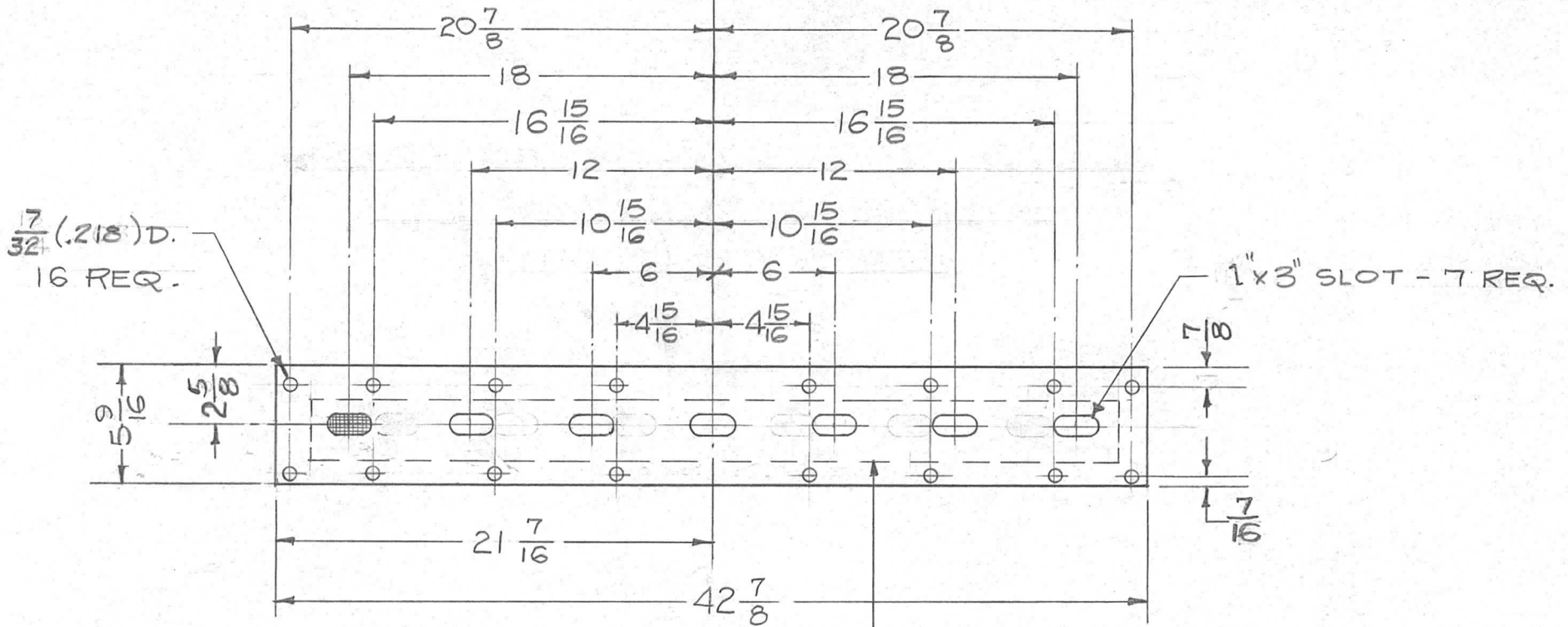
REQ. PER UNIT	USED ON			PX-361 A
	MODEL	ASS'Y. NO.	DATE	
6	TAC	A-674	4-12-57	



REF.-G.E.#11543

REQ.	ITEM	PART NO.				DESCRIPTION			SYMBOL				
		1/16 THK.				THE TECHNICAL MATERIEL CORP.							
		STOCK SIZE				MAMARONECK, NEW YORK							
A	1	11543 ADDED TO REF 9/21/60 2525 cu JCB				TEXTOLITE			SHIM, COIL SUPPORT				
ISSUE	ITEM	CHANGED FROM	DATE	CH. NO.	DRAFTS	CHECKER	ENG. APP.	MATERIAL					
TOLERANCES			SCALE:			XX		164-12-57	JMQ	AM6			
DEC. DIM. ±			MAXIMUM ALLOWABLE TOLERANCES HAVE BEEN DETERMINED AND ANY DEVIATIONS WILL BE CAUSE FOR REJECTION. REMOVE ALL BURRS AND SHARP EDGES			TYPE & TEMPER		DRAWN		CHECKED		FINAL APPROVAL	
FRAC. DIM. ± 1/64						NATURAL				AM6		PX-361 A	
ANGULAR DIM. ±						FINISH & SPEC. NO.		ELEC. DES. APP.		MECH. DES. APP.			

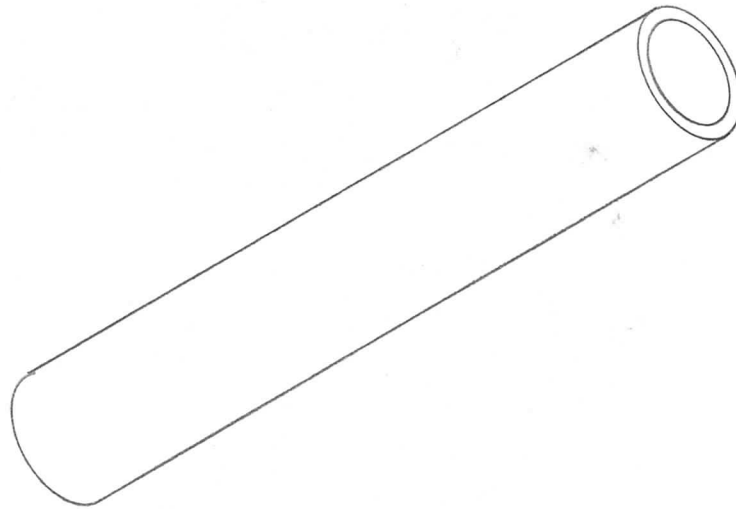
REQ. PER UNIT	USED ON			PX-367 B
	MODEL	ASS'Y. NO.	DATE	
1	TER-5000	A-1431(8)	5-20-57	



Dotted lines indicates Fiberglass Screening - 16 Mesh - Approx. 4" Wide X 40" Long.

ISSUE	ITEM	CHANGED FROM	DATE	CH. NO.	DRAFTS	CHECKER	ENG. APP.	REQ. ITEM	PART NO.	DESCRIPTION	SYMBOL			
B	1	7/16 to holes was 1/2 7/8 to holes was 1 2 5/8 to slots was 2 3/4 5 9/16 OA was 5 3/4	2/1/59	732	16	JLD	GG	1/8 THK.		THE TECHNICAL MATERIEL CORP. MAMARONECK. NEW YORK				
A	1	7/32 D. Was 13/64	9/25/57	1	EX	JLD		Fiberglass		PANEL, FRONT, TOP				
TOLERANCES								SCALE: 1/8		165-20-57	JLD	AK		
DEC. DIM. ± FRAC. DIM. ± 1/64 ANGULAR DIM. ±								MAXIMUM ALLOWABLE TOLERANCES HAVE BEEN DETERMINED AND ANY DEVIATIONS WILL BE CAUSE FOR REJECTION. REMOVE ALL BURRS AND SHARP EDGES		TYPE & TEMPER	HEAT TREAT. SPEC.	DRAWN	CHECKED	FINAL APPROVAL
								FINISH & SPEC. NO.		ELEC. DES. APP.	MECH. DES. APP.	PX-367 B		

REQ. PER UNIT	USED ON			PX-371
	MODEL	ASS'Y. NO.	DATE	
2	A-1421			

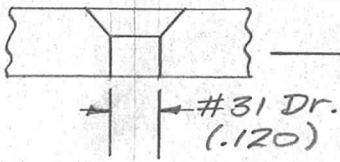
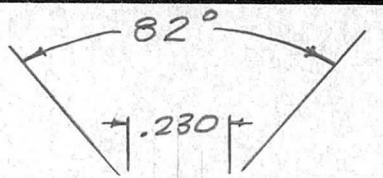


REF: NATIONAL ELECTRIC PROD P/O # CF2-617

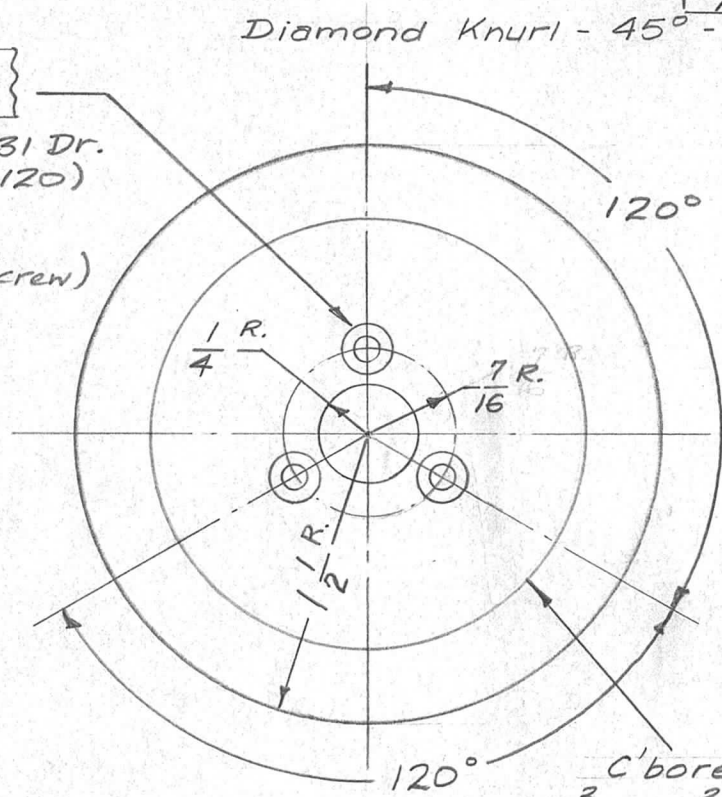
ISSUE	ITEM	CHANGED FROM	DATE	CH. NO.	DRAFTS	CHECKER	ENG. APP.	REQ. ITEM	PART NO.	DESCRIPTION	SYMBOL	
										THE TECHNICAL MATERIEL CORP. MAMARONECK, NEW YORK		
									STOCK SIZE	TUBE, INSULATOR		
									MATERIAL	P/O PO-137		
										<div style="display: flex; justify-content: space-between;"> <i>Handwritten initials</i> <i>Handwritten initials</i> </div>		
									TYPE & TEMPER	DRAWN	CHECKED	FINAL APPROVAL
									FINISH & SPEC. NO.	ELEC. DES. APP.	MECH. DES. APP.	PX-371
TOLERANCES			SCALE:									
DEC. DIM. ±			MAXIMUM ALLOWABLE TOLERANCES HAVE BEEN DETERMINED AND ANY DEVIATIONS WILL BE CAUSE FOR REJECTION. REMOVE ALL BURRS AND SHARP EDGES									
FRAC. DIM. ±												
ANGULAR DIM. ±												

REQ. PER UNIT	USED ON		
	MODEL	ASS'Y. NO.	DATE
1	SBE-1		7-19-57
1	SBE-2		5-5-58
1	SBE-3	A0-101	11-30-59

PX-376 D

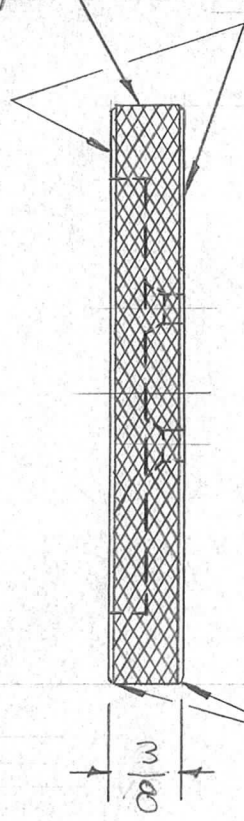


3 Req.
(for 4-40 FH Screw)



Diamond Knurl - 45° - 1/32 Deep

C'bore
2 3/16 D. x 3/16 Dp.



SURFACES TO BE CLEAR

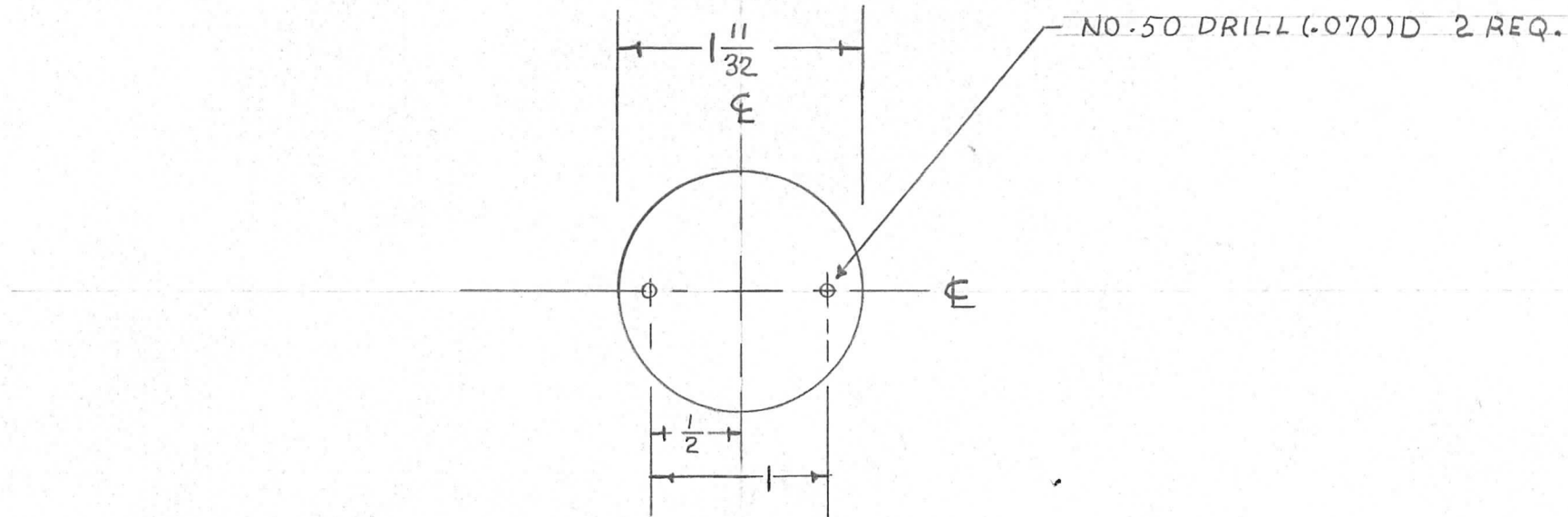
CHAMFER 1/32 X 45°

ISSUE	ITEM	CHANGED FROM	DATE	CH. NO.	DRAFTS	CHECKER	ENG. APP.
		"SURFACES TO BE CLEAR" & CHAMFER NOTE ADD	12.16.66	17514	WHD	JCB	[Signature]
	C	CLERICAL CHANGE	8.24.64		WJB	[Signature]	
	B	CHG'D. BACK TO 3/8" THK. - C'BORE Added	12/1/57	2	16	[Signature]	[Signature]
	A	WAS 3/8 thk. (error)	8/2/57	1	16	[Signature]	[Signature]
TOLERANCES		SCALE: 1-1012					
DEC. DIM. ±		MAXIMUM ALLOWABLE TOLERANCES HAVE BEEN DETERMINED AND ANY DEVIATIONS WILL BE CAUSE FOR REJECTION. REMOVE ALL BURRS AND SHARP EDGES					
FRAC. DIM. ±							
ANGULAR DIM. ±							

REQ. ITEM	PART NO.	DESCRIPTION	SYMBOL
	3" O.D. x 3/8 thk.	THE TECHNICAL MATERIEL CORP. MAMARONECK, NEW YORK	
	STOCK SIZE		
	PLEXIGLAS	KNOB, RF TUNING	
	MATERIAL	SBE-1	
167-19-57		RWB	[Signature]
TYPE & TEMPER	HEAT TREAT. SPEC.	DRAWN	CHECKED
KNURL EDGE		[Signature]	[Signature]
FINISH & SPEC. NO.		ELEC. DES. APP.	MECH. DES. APP.
			PX-376 D

REQ. PER UNIT	USED ON		
	MODEL	ASS'Y. NO.	DATE
1	SBE-1		7-24-57
1	SBE-2		5-5-58
1	SBE-3	AP-101	11-30-59

PX-377 A



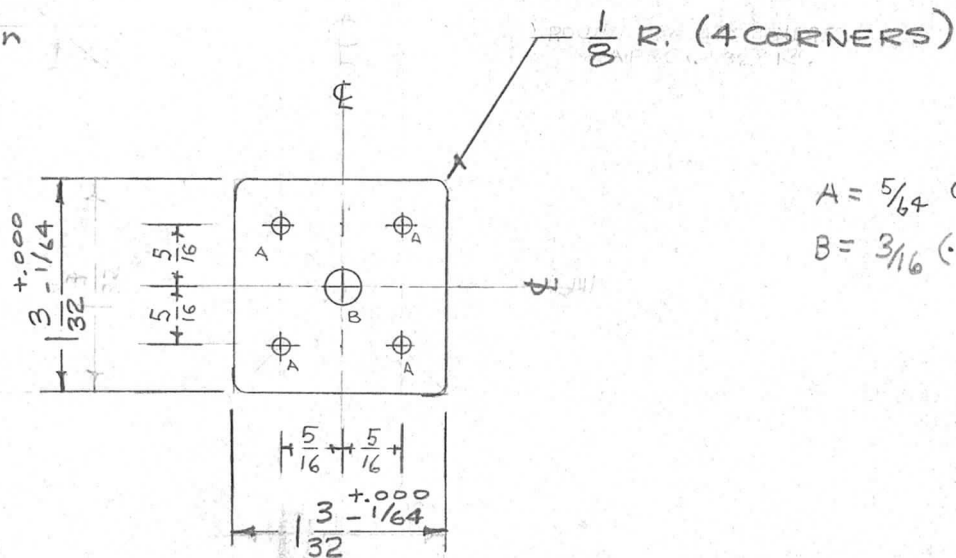
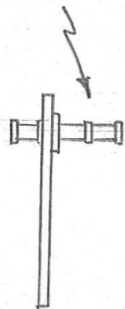
(See PX-240 for Lens with Red Line)

REQ.	ITEM	PART NO.		DESCRIPTION			SYMBOL
		.040 THK \pm .015		THE TECHNICAL MATERIEL CORP.			
		STOCK SIZE		MAMARONECK. NEW YORK			
A	TOL ADDED STK SIZE	6.8.67	18268	WHD	MP	OP	
ISSUE	ITEM	CHANGED FROM	DATE	CH. NO.	DRAFTS	CHECKER	ENG. APP.
TOLERANCES		SCALE:					
DEC. DIM. \pm		MAXIMUM ALLOWABLE TOLERANCES HAVE BEEN DETERMINED AND ANY DEVIATIONS WILL BE CAUSE FOR REJECTION.					
FRAC. DIM. \pm		REMOVE ALL BURRS AND SHARP EDGES					
ANGULAR DIM. \pm		TYPE & TEMPER		HEAT TREAT. SPEC.		DRAWN	CHECKED
		FINISH & SPEC. NO.		ELEC. DES. APP.		MECH. DES. APP.	
						2B	16
						2B	APB
							PX-377 A

REQ. PER UNIT	USED ON		
	MODEL	ASS'Y. NO.	DATE
1	SBE-1	A-1446	7-18-57
1	SBE-2	A-1511	3-12-58
1	SBE-3	A-1511	11-30-59

PX-379 A

Assemble As Shown
(In "A" Holes)



A = $\frac{5}{16}$ 078 4 REQ
B = $\frac{3}{16}$ (.187) D 1 Req.

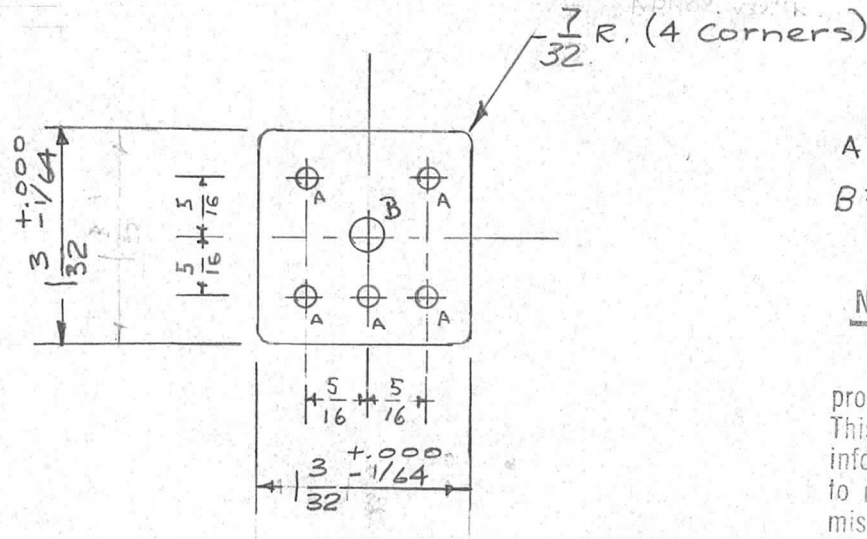
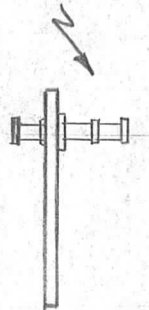
4	2	TE-168-4B	Term., Miniature	
1	1	PX-379	Term. Bd.	
REQ. ITEM	PART NO.		DESCRIPTION	SYMBOL
	$\frac{1}{16}$ " THK.		THE TECHNICAL MATERIEL CORP.	
	STOCK SIZE		MAMARONECK. NEW YORK	
	PHENOLIC XXXP LAMINATE		TERM. BD., XFMR, 4 LUG LUG	
	MATERIAL		SBE-1	
			2B	
TOLERANCES		SCALE: 1-1031	DRAWN	
DEC. DIM. \pm		MAXIMUM ALLOWABLE TOLERANCES HAVE BEEN DETERMINED AND ANY DEVIATIONS WILL BE CAUSE FOR REJECTION. REMOVE ALL BURRS AND SHARP EDGES	CHECKED	
FRAC. DIM. \pm			FINAL APPROVAL	
ANGULAR DIM. \pm			PX-379 A	
		FINISH & SPEC. NO.	ELEC. DES. APP.	MECH. DES. APP.

A	1	$\frac{1}{32}$ WAS $1\frac{1}{8}$ $\frac{1}{8} R.$ WAS $\frac{1}{32}$	3/12/58	1	16	J.H.S.	
ISSUE	ITEM	CHANGED FROM	DATE	CH. NO.	DRAFTS	CHECKER	ENG. APP.

REQ. PER UNIT	USED ON		
	MODEL	ASS'Y. NO.	DATE
2		A-1444	
1	SBE-1	A-1447	8-1-57
2	SBE-2	A-1444	3-18-58
3	SBE-3 AX-205	TT-100	12-2-59

PX-380 B

Assemble As Shown.
(In "A" Holes)



A = 5/64 (.078) 5 REQ.
B = 3/16 (.187) D

NOTICE TO PERSONS RECEIVING THIS DRAWING

THE TECHNICAL MATERIEL CORPORATION claims proprietary right in the material disclosed hereon. This drawing is issued in confidence for engineering information only and may not be reproduced or used to manufacture anything shown hereon without permission from THE TECHNICAL MATERIEL CORPORATION to the user. This drawing is loaned for mutual assistance and is subject to recall at any time.

Property of:
THE TECHNICAL MATERIEL CORPORATION
MAMARONECK, NEW YORK

REQ. ITEM	PART NO.	DESCRIPTION	SYMBOL
5 2	TE-168-4B	Term., Miniature	
1 1	PX-380	Term. Bd.	
1/16" THK.		THE TECHNICAL MATERIEL CORP. MAMARONECK, NEW YORK	
STOCK SIZE		TERM. BD., XFMR., 5 LUG.	
PHENOLIC XXXP LAMINATE		SBE-1	
MATERIAL			
TOLERANCES		SCALE: 1-1031	
DEC. DIM. ±		MAXIMUM ALLOWABLE TOLERANCES HAVE BEEN DETERMINED AND ANY DEVIATIONS WILL BE CAUSE FOR REJECTION.	
FRAC. DIM. ±		REMOVE ALL BURRS AND SHARP EDGES	
ANGULAR DIM. ±			
TYPE & TEMPER		DRAWN	
HEAT TREAT. SPEC.		CHECKED	
FINISH & SPEC. NO.		FINAL APPROVAL	
		ELEC. DES. APP. MECH. DES. APP.	
		PX-380 B	

B	DIM 7/32 R WAS 1/8 R	6-29-76	21418	GDL	AL	AL
A	1-3/32 WAS 1-1/8 1/8 R. WAS 1/32 R.	3/12/58	T	16	JAD	AL

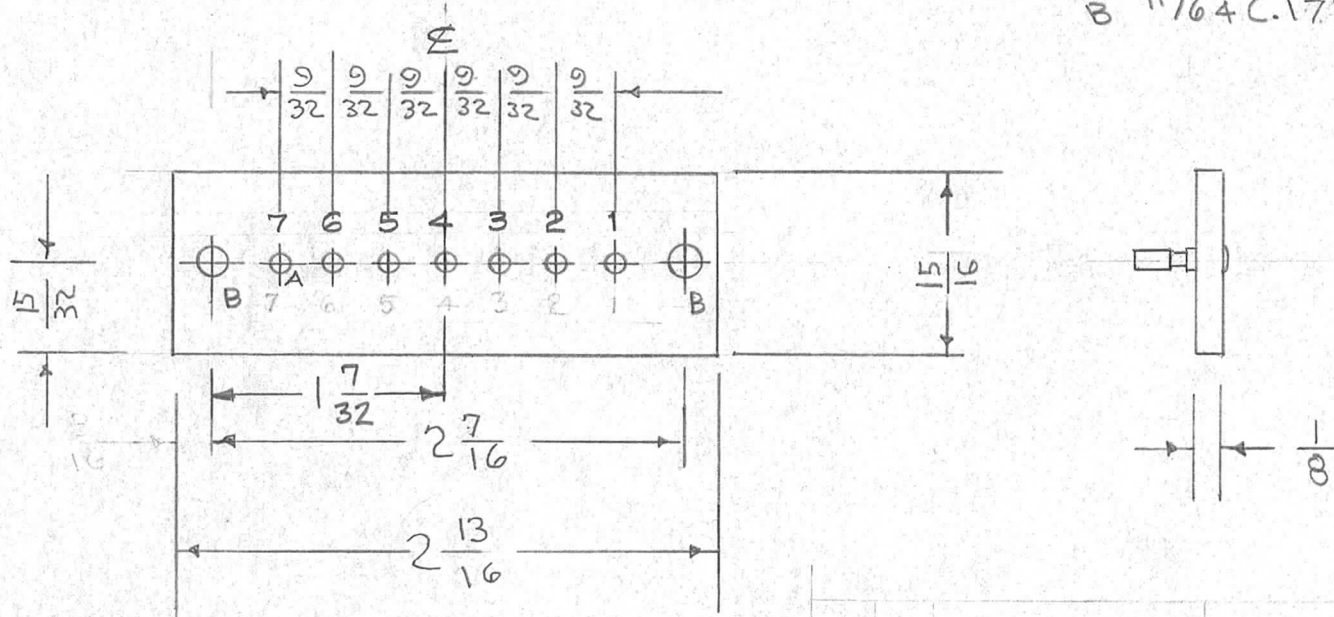
LETTER TO BE 1/8 HIGH BLACK GOTHIC COATED WITH S-113 FUNGUS RESISTANT VARNISH BEFORE LUGS ARE STAKED

REQ. PER UNIT	USED ON		
	MODEL	ASS'Y. NO.	DATE
1	SBE-1		7-25-57
1	SBE-2	A-1520	3-27-58

PX-382 B

A - 2.9 M.M
B 1/64 (.0156) D

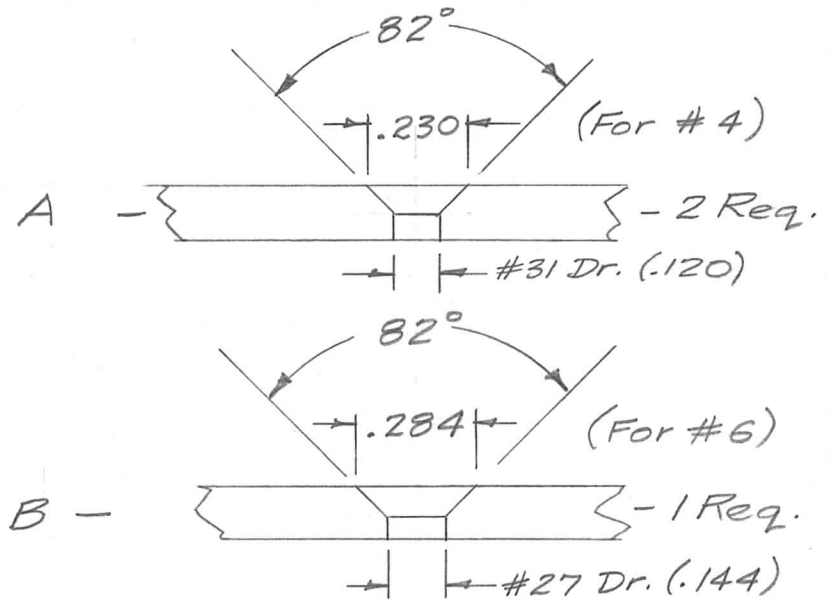
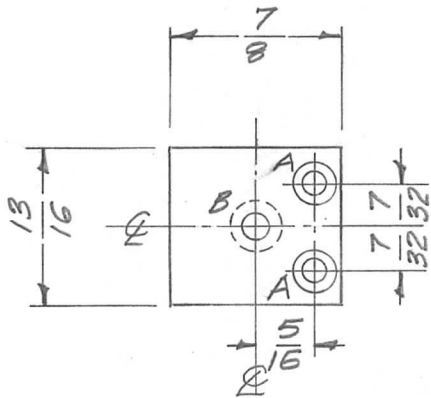
7 HOLES REQ.
2 " " "



7	2	TE-109-3	LUG	
1	1	PX-382	BOARD TERMINAL (NO. 286)	
REQ. ITEM	PART NO.		DESCRIPTION	SYMBOL
	1/8 THK		THE TECHNICAL MATERIEL CORP.	
	STOCK SIZE		MAMARONECK, NEW YORK	
	XXXXP LAMINATE		TERM. BD, HEATER	
	MATERIAL		SBE-1	
		DB		DB
		DB		DB
		SEE ABOVE		PX-382 B
		FINISH & SPEC. NO.	ELEC. DES. APP.	MECH. DES. APP.

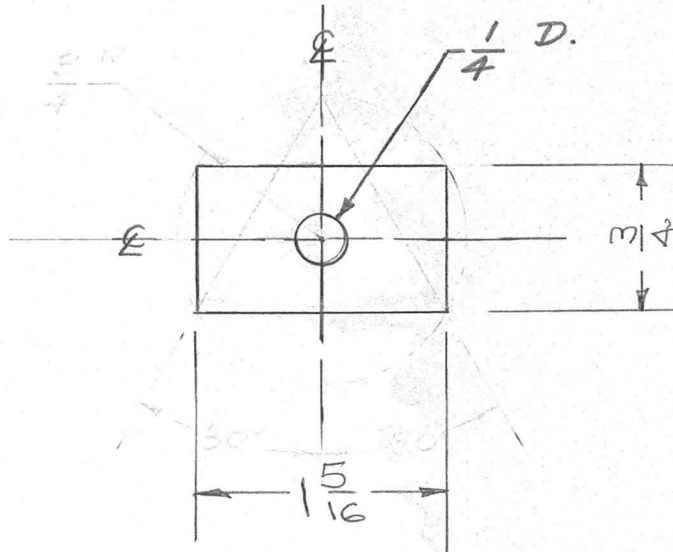
B	1	Dim. decimal "B" Hole WAS (140) D (error)	7-11-61	5210	G.D.L	JCB	DB
A	1	STAMPING POSITION CHG'D. (WAS ON BTM)	3/28/58	1	16	JCB	DB
ISSUE ITEM	CHANGED FROM		DATE	CH. NO.	DRAFTS	CHECKER	ENG. APP.
TOLERANCES			SCALE:				
DEC. DIM. ±			MAXIMUM ALLOWABLE TOLERANCES HAVE BEEN DETERMINED AND ANY DEVIATIONS WILL BE CAUSE FOR REJECTION.				
FRAC. DIM. ±			REMOVE ALL BURRS AND SHARP EDGES				
ANGULAR DIM. ±							

REQ. PER UNIT	USED ON			PX-384
	MODEL	ASS'Y. NO.	DATE	
1	A-1461	A-1461	9-10-57	



REQ.	ITEM	PART NO.	DESCRIPTION				SYMBOL
		1/16 THK.	THE TECHNICAL MATERIEL CORP. MAMARONECK, NEW YORK				INSULATOR, CAPACITOR
		STOCK SIZE					
		Phenolic					
MATERIAL							
ISSUE	ITEM	CHANGED FROM	DATE	CH. NO.	DRAFTS	CHECKER	ENG. APP.
TOLERANCES			SCALE:				
DEC. DIM. ±			MAXIMUM ALLOWABLE TOLERANCES HAVE BEEN DETERMINED AND ANY DEVIATIONS WILL BE CAUSE FOR REJECTION. REMOVE ALL BURRS AND SHARP EDGES				
FRAC. DIM. ±							
ANGULAR DIM. ±							
TYPE & TEMPER		HEAT TREAT. SPEC.	DRAWN	CHECKED	FINAL APPROVAL		
NATURAL			OB		PX-384		
FINISH & SPEC. NO.			ELEC. DES. APP.	MECH. DES. APP.			

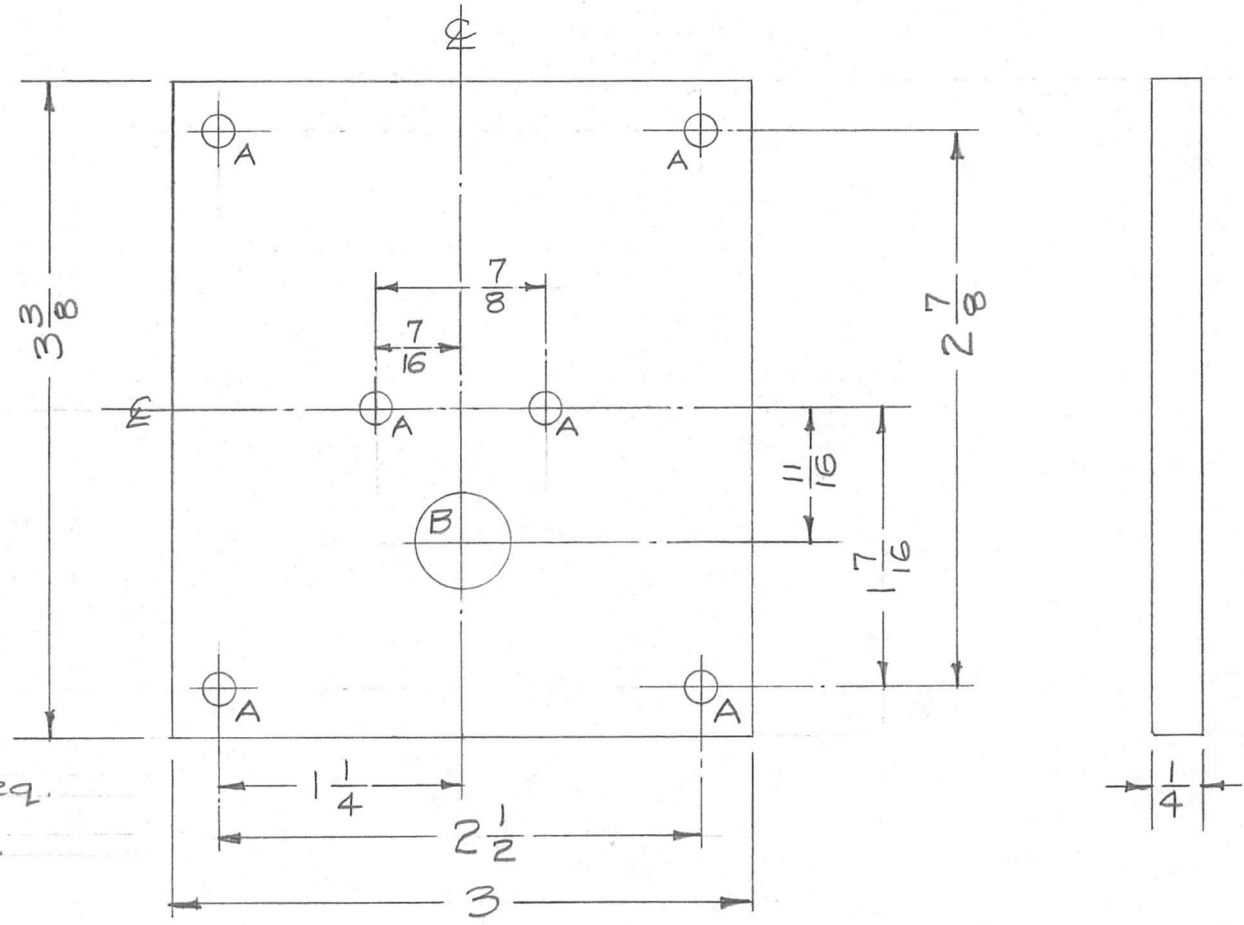
REQ. PER UNIT	USED ON			PX-387
	MODEL	ASS'Y. NO.	DATE	
4	TER-500-70	A-1476	10-25-57	



REQ.	ITEM	PART NO.	DESCRIPTION				SYMBOL
		1/4 thk.	THE TECHNICAL MATERIEL CORP.				
		STOCK SIZE	MAMARONECK, NEW YORK				
		TEFLON	SUPPORT, RESISTOR,				
		MATERIAL	INSIDE (TER-500-70)				
ISSUE	ITEM	CHANGED FROM	DATE	CH. NO.	DRAFTS	CHECKER	ENG. APP.
TOLERANCES			SCALE: FULL				
DEC. DIM. ±			MAXIMUM ALLOWABLE TOLERANCES HAVE BEEN DETERMINED AND ANY DEVIATIONS WILL BE CAUSE FOR REJECTION. REMOVE ALL BURRS AND SHARP EDGES				
FRAC. DIM. ± 1/64							
ANGULAR DIM. ± 1°							
TYPE & TEMPER		HEAT TREAT. SPEC.	DRAWN	CHECKED	FINAL APPROVAL		
FINISH & SPEC. NO.		ELEC. DES. APP.	MECH. DES. APP.	PX-387			

REQ. PER UNIT	USED ON		
	MODEL	ASS'Y. NO.	DATE
1	ATS-50TU		12-18-57
1	ATS-70TU		12-18-57

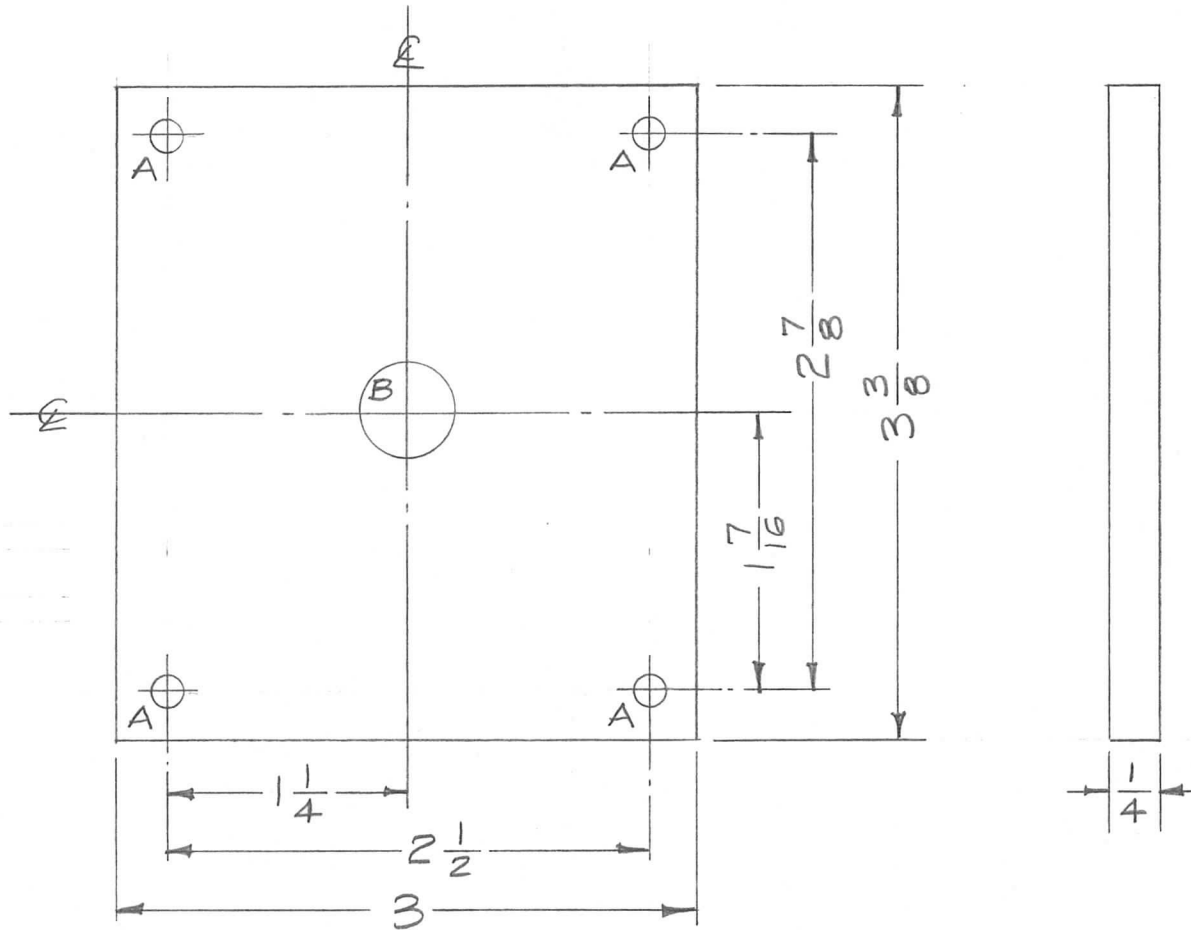
PX-393



A - 1/64 (.171) D. 6 Req.
 B - .502 D. 1 Req.

ISSUE	ITEM	CHANGED FROM	DATE	CH. NO.	DRAFTS	CHECKER	ENG. APP.	REQ. ITEM	PART NO.	DESCRIPTION	SYMBOL	
									1/4 THK.	THE TECHNICAL MATERIEL CORP. MAMARONECK, NEW YORK	PLATE, MOUNTING, CONTACT SPRING	
									STOCK SIZE			
									TEFLON			
									MATERIAL			
								N	N	16 12/18/57	JWS	AMB
TOLERANCES			SCALE: FULL					TYPE & TEMPER	HEAT TREAT. SPEC.	DRAWN	CHECKED	FINAL APPROVAL
DEC. DIM. ± FRAC. DIM. ± 1/64 ANGULAR DIM. ±			MAXIMUM ALLOWABLE TOLERANCES HAVE BEEN DETERMINED AND ANY DEVIATIONS WILL BE CAUSE FOR REJECTION. REMOVE ALL BURRS AND SHARP EDGES					NATURAL		JWS	SAF	PX-393
								FINISH & SPEC. NO.	ELEC. DES. APP.	MECH. DES. APP.		

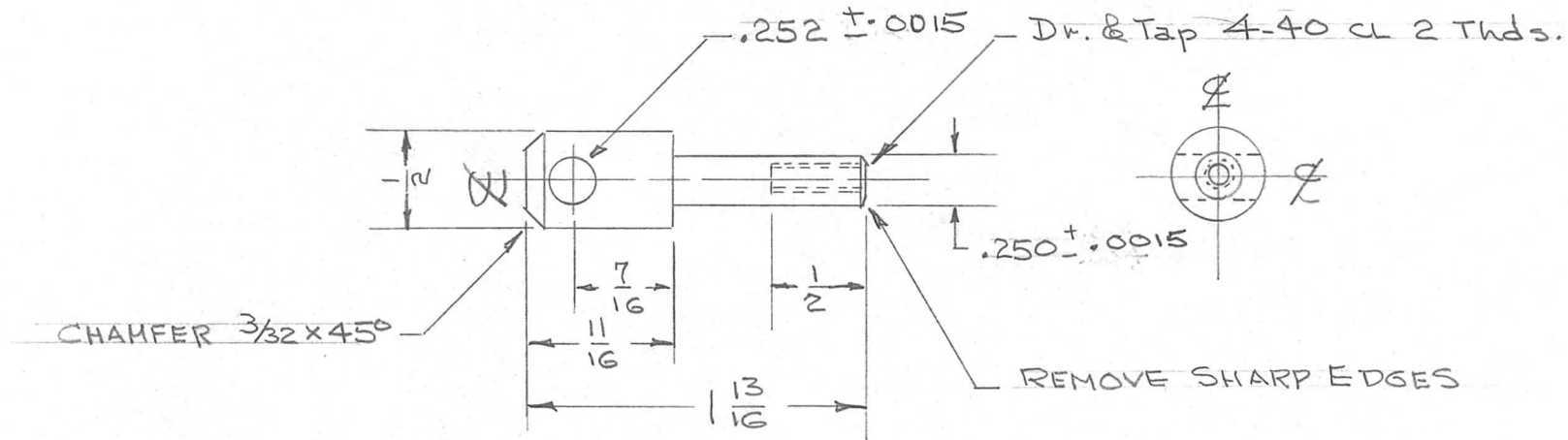
REQ. PER UNIT	USED ON			PX-394
	MODEL	ASS'Y. NO.	DATE	
	1	ATS-50TU		
1	ATS-70TU		12-18-57	



A - 1/64 (.171) D. 4 Req.
 B - 1/2 (.500) D. 1 Req.

ISSUE	ITEM	CHANGED FROM	DATE	CH. NO.	DRAFTS	CHECKER	ENG. APP.	REQ. ITEM	PART NO.	DESCRIPTION	SYMBOL		
									1/4 THK.	THE TECHNICAL MATERIEL CORP. MAMARONECK, NEW YORK			
									STOCK SIZE		PLATE, INSULATOR, DRIVE		
									TEFLON		SHAFT		
									MATERIAL				
										12-18-57			
TOLERANCES								SCALE: FULL					
DEC. DIM. ±								MAXIMUM ALLOWABLE TOLERANCES HAVE BEEN DETERMINED AND ANY DEVIATIONS WILL BE CAUSE FOR REJECTION.					
FRAC. DIM. ± 1/64								REMOVE ALL BURRS AND SHARP EDGES					
ANGULAR DIM. ±													
								TYPE & TEMPER		HEAT TREAT. SPEC.		DRAWN	
								NATURAL				CHECKED	
								FINISH & SPEC. NO.		ELEC. DES. APP.		MECH. DES. APP.	
												PX-394	

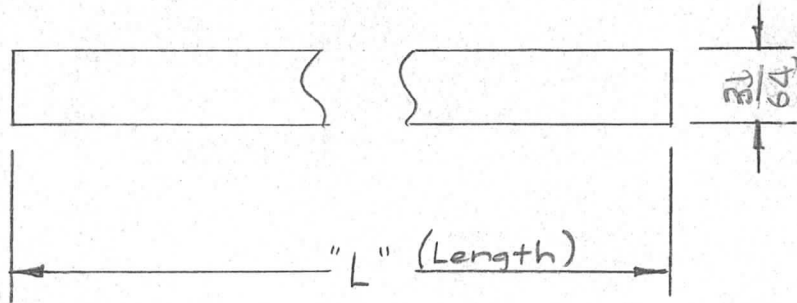
REQ. PER UNIT	USED ON			PX-395	B
	MODEL	ASS'Y. NO.	DATE		
1	ATS-50 TU		12-18-57		
1	ATS-70 TU		"		



* FUNGUS PROOFING PER
TMC SPECIFICATION S-113

REQ.	ITEM	PART NO.	DESCRIPTION	SYMBOL					
		1/2 DIA.	THE TECHNICAL MATERIEL CORP. MAMARONECK, NEW YORK						
		STOCK SIZE	ROD CONNECTING						
		PHENOLIC							
		MATERIAL							
B		S113 ADDED	6 ^{12/13/57} HAO	g5R					
A	2	.250 ± .0015 was .250 ± .001	3/31/58	file					
A	1	.252 was .257 DIA	1	file					
ISSUE	ITEM	CHANGED FROM	DATE	CH. NO.	DRAFTS	CHECKER	ENG. APP.		
TOLERANCES			SCALE:						
DEC. DIM. ± .0015			MAXIMUM ALLOWABLE TOLERANCES HAVE BEEN DETERMINED AND ANY DEVIATIONS WILL BE CAUSE FOR REJECTION.						
FRAC. DIM. ± 1/64			REMOVE ALL BURRS AND SHARP EDGES						
ANGULAR DIM. ±									
TYPE & TEMPER		HEAT TREAT. SPEC.		DRAWN		CHECKED		FINAL APPROVAL	
NATURAL *				8/4		PX-395		B	
FINISH & SPEC. NO.			ELEC. DES. APP.		MECH. DES. APP.				

REQ. PER UNIT	USED ON			PX-396-B
	MODEL	ASS'Y. NO.	DATE	
	SPP-3		12-23-57	



Type Designation to be as follows:

PX-396-17

TMC DWG. NO.

REQ. LENGTH (inches)
"L"

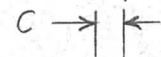
Example:

PX-396-5.50 = Guard, 5 1/2" Long.

ISSUE	ITEM	CHANGED FROM	DATE	CH. NO.	DRAFTS	CHECKER	ENG. APP.	REQ. ITEM	PART NO.	DESCRIPTION	SYMBOL	
										THE TECHNICAL MATERIEL CORP. MAMARONECK, NEW YORK		
									.013 THK. STOCK SIZE			
B		CHANGE DIM 3/8 TO 31/64	5-9-84	22064	GBL					CELLOUSE ACETATE OR EQUIV	GUARD, TAB	
A	1	MAT. WAS VINYL	8-25-59		DM	MD	AM			MATERIAL		
TOLERANCES			SCALE:							16 12/23/57	JADE	ATT
DEC. DIM. ±			MAXIMUM ALLOWABLE TOLERANCES HAVE BEEN DETERMINED AND ANY DEVIATIONS WILL BE CAUSE FOR REJECTION. REMOVE ALL BURRS AND SHARP EDGES									
FRAC. DIM. ± 1/64												
ANGULAR DIM. ±												
								TYPE & TEMPER	HEAT TREAT. SPEC.	DRAWN	CHECKED	FINAL APPROVAL
								FINISH & SPEC. NO.	ELEC. DES. APP.	MECH. DES. APP.	PX-396-B	B

TMC NO.	DIM. A	DIM. B	DIM. C	USED ON	REQ. PER UNIT	USED ON			PX-397	E
						MODEL	ASS'Y. NO.	DATE		
PX-397-1	3"	3-3/4"	.020	TR-145 TR-146						
PX-397-2	2"	5"	.020	TR-167						
PX-397-3	2"	24"	.020	TR-167						
PX-397-4	10 1/2"	20 FT.	.005	TR-179	4					
PX-397-5	10 1/2"	12 FT.	.020	TR-179	2					
PX-397-6	10 1/2"	4 FT.	.020	TR-179	2					
PX-397-7	10 1/2"	2 FT.	.020	TR-179	2					
PX-397-8	1 1/2"	20 FT.	.020	TR-179	4					
PX-397-9	1 3/32	1 3/16	.010	FX297	1					

STANDARD DRAWING

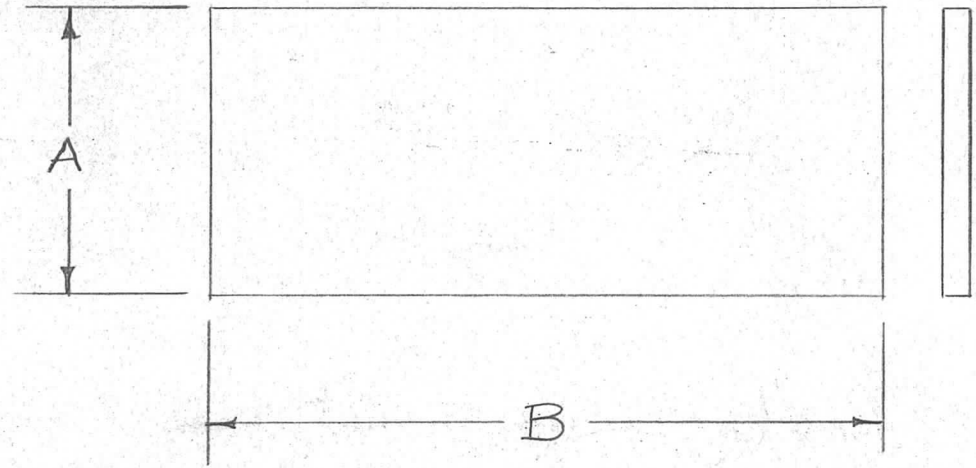


NOTICE TO PERSONS RECEIVING THIS DRAWING

THE TECHNICAL MATERIEL CORPORATION claims proprietary right in the material disclosed hereon. This drawing is issued in confidence for engineering information only and may not be reproduced or used to manufacture anything shown hereon without permission from THE TECHNICAL MATERIEL CORPORATION to the user. This drawing is loaned for mutual assistance and is subject to recall at any time.

Property of:

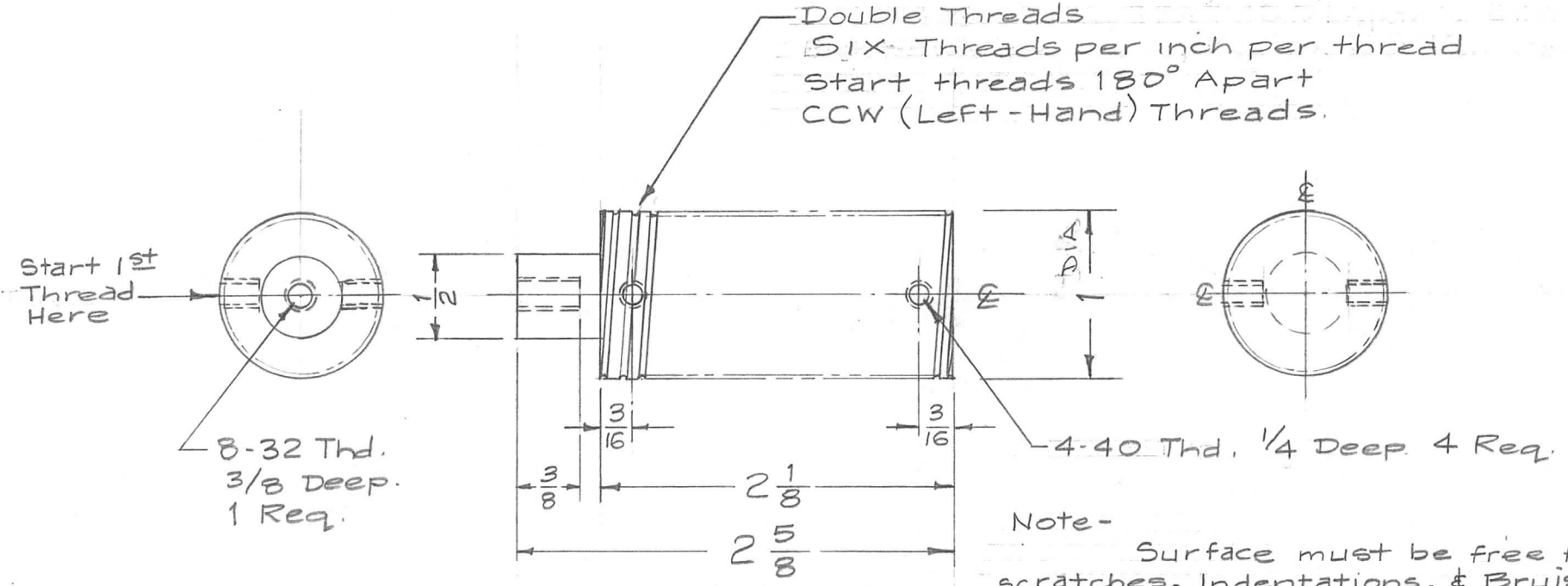
THE TECHNICAL MATERIEL CORPORATION
MAMARONECK, NEW YORK



ISSUE	ITEM	CHANGED FROM	DATE	CH. NO.	DRAFTS	CHECKER	ENG. APP.	REQ. ITEM	PART NO.	DESCRIPTION	SYMBOL		
C	1	PX-397-4 ADDED	7-5-63	94									
D	2	DIM. A WAS 1 7/8 DIM. B WAS 10 IN. USED ON PX-397-3	10-										
E	1	PX397-9 ADDED	4/3/69	19469	GE	JW	EFM						
D	1	SEE EMN# 10894	2/18/64	10894	AM	T.R.	gc						
TOLERANCES								SCALE: N					
DEC. DIM. ±								TYPE & TEMPER		DRAWN		FINAL APPROVAL	
FRAC. DIM. ± 1/64								NATURAL		JDR		AJT	
ANGULAR DIM. ±								FINISH & SPEC. NO.		ELEC. DES. APP.		MECH. DES. APP.	
										1612-30-57		PX-397 E	

REQ. PER UNIT	USED ON	
	MODEL	DATE
1	ATS-()TU	2-17-58

PX-398 B



REQ. ITEM	PART NO.					DESCRIPTION			SYMBOL
	1" O.D.					THE TECHNICAL MATERIEL CORP.			
	STOCK SIZE					MAMARONECK, NEW YORK			
B 1	SIX Thds per inch WAS EIGHT Thds per inch					FORM, HUMIDITY ELEMENT			
A 1	Threading Info Clarified & Note Added								
ISSUE	ITEM	CHANGED FROM	DATE	CH. NO.	DRAFTS	CHECKER	ENG. APP.	MATERIAL	
								Polystyrene	
								MATERIAL	
								16	2/17/58
								Jude	AM
TOLERANCES		SCALE: Full		TYPE & TEMPER		HEAT TREAT. SPEC.	DRAWN	CHECKED	FINAL APPROVAL
DEC. DIM. ±		MAXIMUM ALLOWABLE TOLERANCES HAVE BEEN DETERMINED AND ANY DEVIATIONS WILL BE CAUSE FOR REJECTION.		Natural					
FRAC. DIM. ± 1/16		REMOVE ALL BURRS AND SHARP EDGES		FINISH & SPEC. NO.					
ANGULAR DIM. ±									PX-398 B