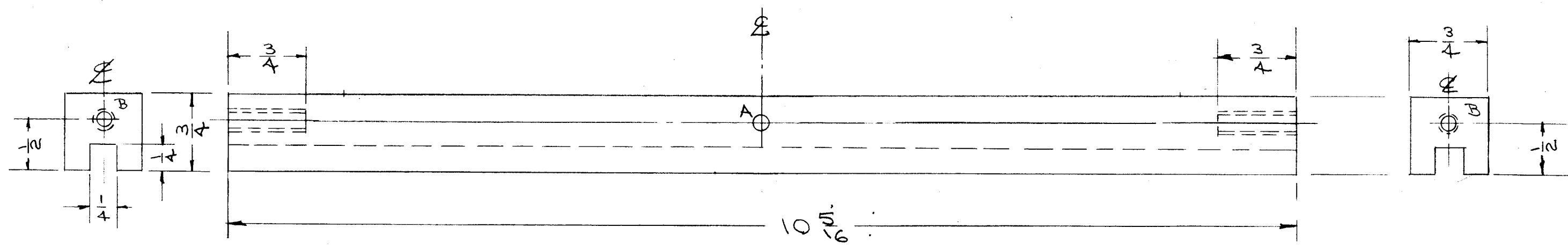
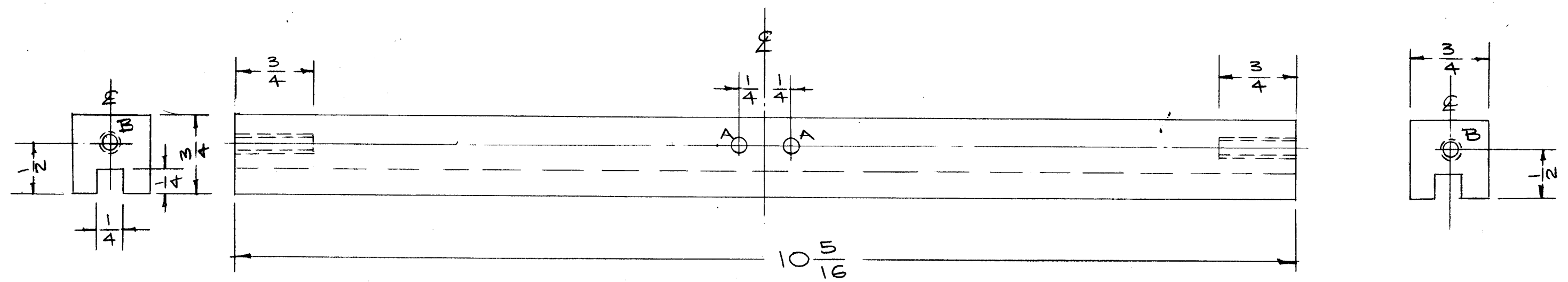


PX-390 C



PX-390-1  
2 PER UNIT

A = 5/32 D. 1 Req.  
B = DRILL & TAP 10-24 CLASS 2 - 2 REQ.



PX-390-2  
1 PER UNIT

A = 5/32 D. 2 Req.  
B = DRILL & TAP 10-24 2 REQ. CLASS 2

ISSUE	ITEM	CHANGED FROM	DATE	CH. NO.	DRAFTS	CHECKER	ENG. APP.
C	1	MAT. WAS MELAWINE	5/13/58	3			
B	1	"A" HOLES ADDED (REV. A-1 Error)	2/24/58	2			
A	2	MAT. WAS PHENOLIC "A" HOLES DELETED	2/14/58	1			

TOLERANCES		SCALE: FULL
DEC. DIM. ±		MAXIMUM ALLOWABLE TOLERANCES HAVE BEEN DETERMINED AND ANY DEVIATIONS WILL BE CAUSE FOR REJECTION. REMOVE ALL BURRS AND SHARP EDGES
FRAC. DIM. ±	1/64	
ANGULAR DIM. ±		

AS SHOWN	ATS-70 TU		12-13-57
AS SHOWN	ATS-50 TU		12-13-57
REQ. PER UNIT	MODEL	PROJECT NO.	ASS'Y. NO.
	USED ON		

REQ. ITEM	PART NO.	DESCRIPTION	SYMBOL
		THE TECHNICAL MATERIEL CORP. MAMARONECK, NEW YORK	
		SUPPORT, COIL	
		MODEL AT5	
		PHENOLIC	
		STOCK SIZE	
		XXXXP	
		NATURAL	
		FINISH & SPEC. NO.	
		TYPE & TEMPER	
		HEAT TREAT. SPEC.	
		DRAWN	
		CHECKED	
		FINAL APPROVAL	
		ELEC. DES. APP.	
		MECH. DES. APP.	
		PX-390 C	