

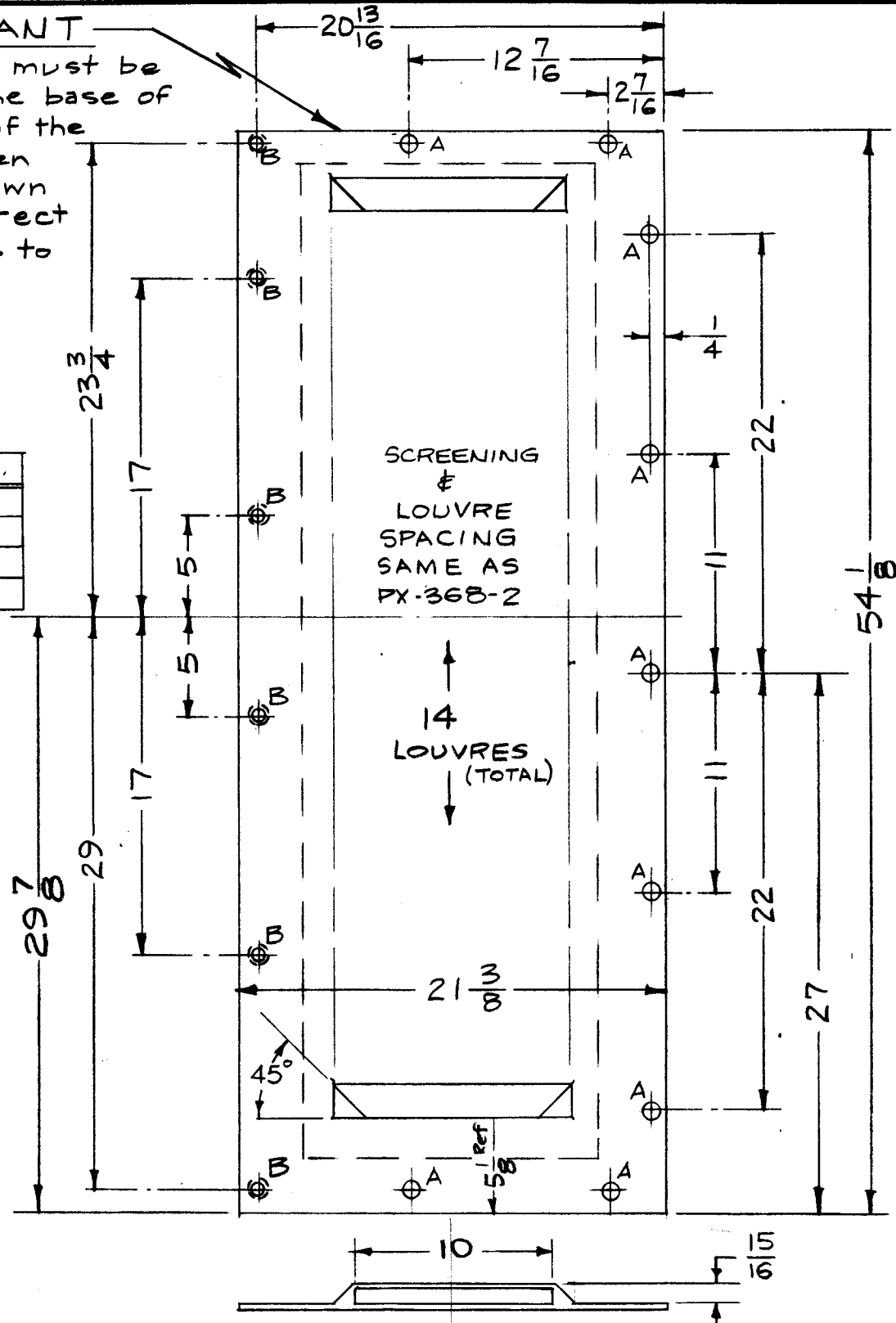
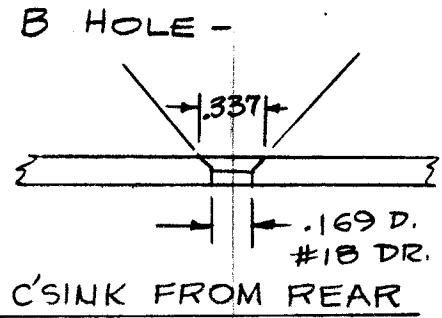
PX-368 B

IMPORTANT

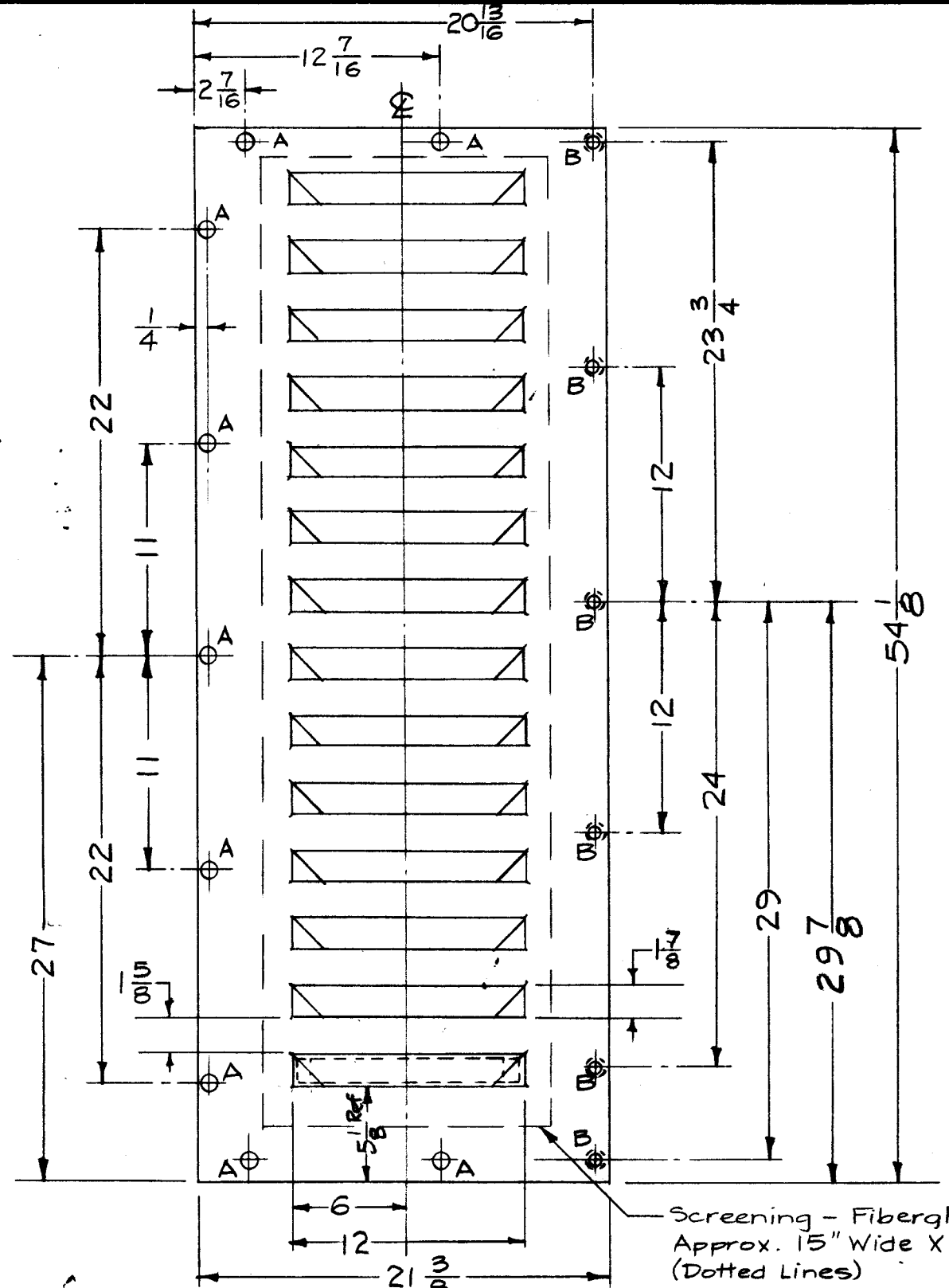
Top edge of piece must be cut exactly at the base of the first louvre of the blank piece. Then measure 54 1/8" down to establish correct base. (This applies to PX-368-1 & 2)

A - 1/4 (.250) D.

HOLE	PART NO.	QUAN.
A	PX-368-1	9
B	PX-368-1	6
A	PX-368-2	9
B	PX-368-2	6



PX-368-1
DOOR, FRONT, LEFT



PX-368-2
DOOR, FRONT, RIGHT

ISSUE ITEM	CHANGED FROM	DATE	CH. NO.	DRAFTS	CHECKER	ENG. APP.
B 1	27 was 27 1/8 29 7/8 was 30 54 1/8 was 54 1/4 OA	2/1/59	732	16		
A 2	1 7/8 was 1 5/8	9/9/57	1	2		
1	1 5/8 was 1 7/8					

TOLERANCES: SCALE: 1/8

DEC. DIM. ±
FRAC. DIM. ± 1/64
ANGULAR DIM. ±

MAXIMUM ALLOWABLE TOLERANCES HAVE BEEN DETERMINED AND ANY DEVIATIONS WILL BE CAUSE FOR REJECTION. REMOVE ALL BURRS AND SHARP EDGES

1 Each TER-5000

REQ. PER UNIT	MODEL	PROJECT NO.	ASS'Y. NO.	DATE
			A-1431 (B)	5-20-57

USED ON

REQ. ITEM	PART NO.	DESCRIPTION	SYMBOL
1/8 THK.		THE TECHNICAL MATERIEL CORP. MAMARONECK, NEW YORK	
Fiberglas		DOOR, FRONT (TER-5000)	
		165-20-57	
		DRAWN	CHECKED
		FINAL APPROVAL	
			PX-368 B