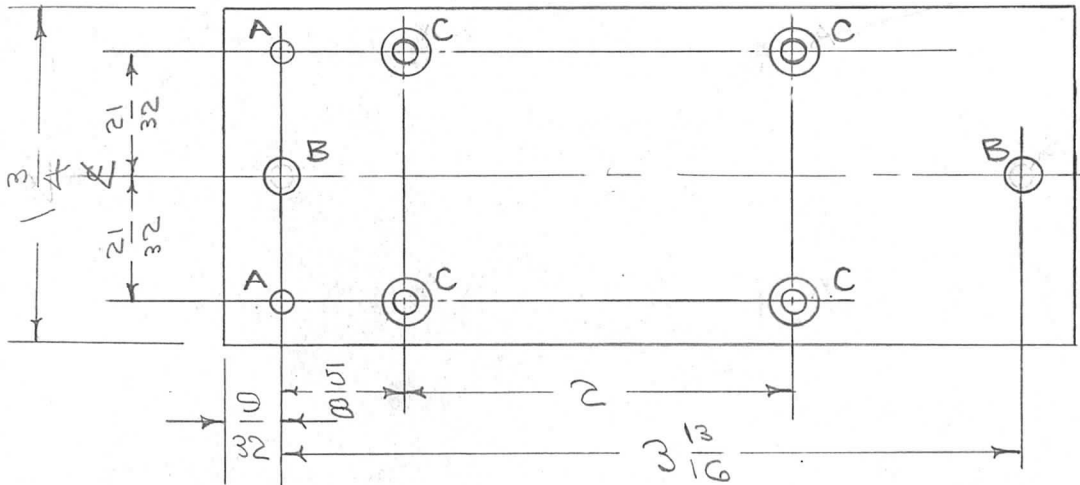
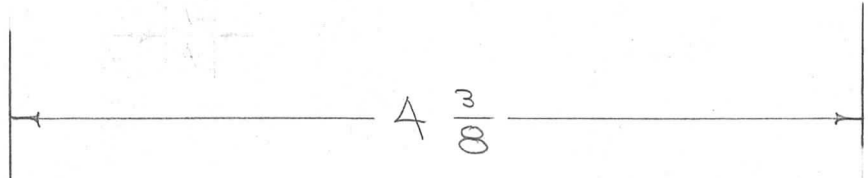


REQ. PER UNIT	USED ON			PX-325	B
	MODEL	ASS'Y. NO.	DATE		
1	RTF		8-23-56		
1	RTF-2	P/A	11/20/58		

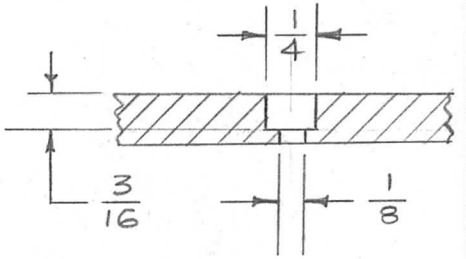
3/4



A -  $\frac{1}{8}$  (.125) DIA. 2 HOLES REQ.

B -  $\frac{3}{16}$  (.187) DIA. 2 HOLES REQ.

C - 4 HOLES REQ.



ISSUE	ITEM	CHANGED FROM	DATE	CH. NO.	DRAFTS	CHECKER	ENG. APP.
B	2	C HOLE DETAIL ADDED	11/26/56	2	LG	JAD	WE
	1	B HOLES WERE A HOLES					
A	1	REDRAWN COMPLETE REVISION	8/23/56	1	CSO	JAD	WE

REQ. ITEM	PART NO.	DESCRIPTION	SYMBOL
	1/4 THICK	THE TECHNICAL MATERIEL CORP.	
	STOCK SIZE	MAMARONECK. NEW YORK	
	TEFLON	INSULATOR, NEUTRALIZER	
		P/A.	RTF
		CSO 8/23/56	JAD
			WE
		DRAWN	CHECKED
			FINAL APPROVAL
			PX-325
			B
		ELEC. DES. APP.	MECH. DES. APP.

**TOLERANCES**

DEC. DIM.  $\pm$

FRAC. DIM.  $\pm \frac{1}{64}$

ANGULAR DIM.  $\pm$

**SCALE:**

MAXIMUM ALLOWABLE TOLERANCES HAVE BEEN DETERMINED AND ANY DEVIATIONS WILL BE CAUSE FOR REJECTION.

REMOVE ALL BURRS AND SHARP EDGES