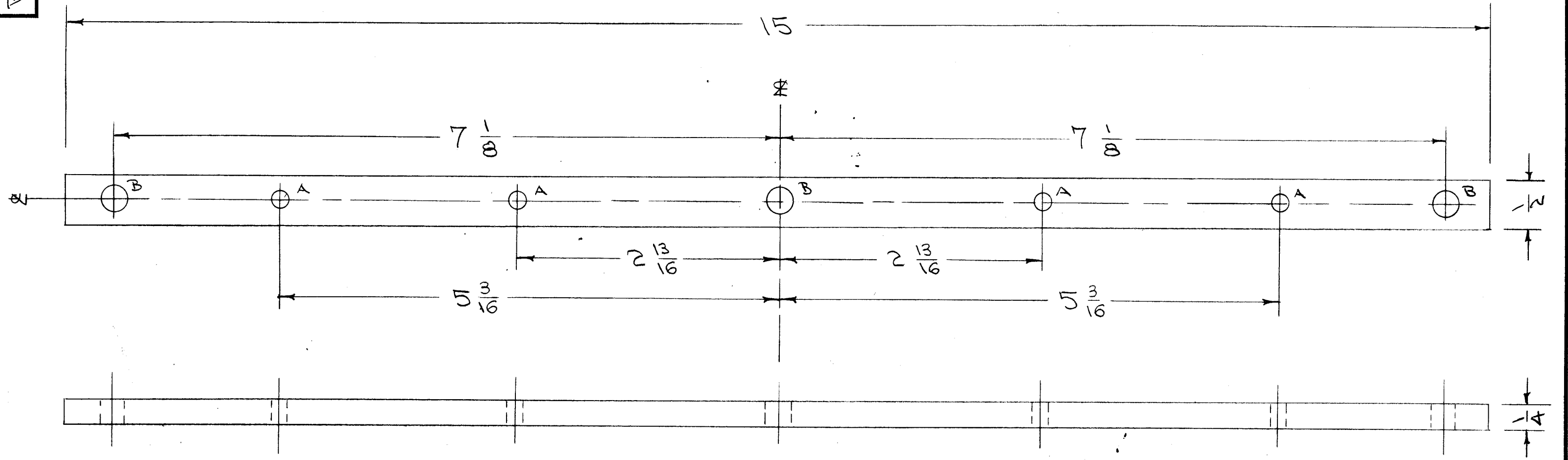


PX-315



A - 1/64 (.171) DIA. 4 HOLES REQ.  
 B - 9/32 (.281) " 3 " "

ISSUE	ITEM	CHANGED FROM	DATE	CH. NO.	DRAFTS	CHECKER	ENG. APP.
TOLERANCES			SCALE:				
DEC. DIM. ±			MAXIMUM ALLOWABLE TOLERANCES HAVE BEEN DETERMINED AND ANY DEVIATIONS WILL BE CAUSE FOR REJECTION.				
FRAC. DIM. ± 1/64			REMOVE ALL BURRS AND SHARP EDGES				
ANGULAR DIM. ±							

1	TER-3500-300		A-2053	2-9-61
1	TER-3500-70		A-1471	10-23-57
2	TER-3500		A-1145	11-9-55
REQ. PER UNIT	MODEL	PROJECT NO.	ASS'Y. NO.	DATE
USED ON				

REQ. ITEM	PART NO.	DESCRIPTION	SYMBOL
1/4 X 1/2		THE TECHNICAL MATERIEL CORP. MAMARONECK, NEW YORK	
STOCK SIZE		TOP & BTM. INSULATOR	
TEFLON		TER-3500	
MATERIAL			
		CDD 11-9-55	
		JMO	
			QMB
TYPE & TEMPER	HEAT TREAT. SPEC.	DRAWN	CHECKED
		WJC	PX-315
FINISH & SPEC. NO.	ELEC. DES. APP.	MECH. DES. APP.	