

IF IT IS FOUND DESIRABLE TO CHANGE ANY TOLERANCE OR OTHER DETAIL SPECIFIED ON THIS DRAWING NOTIFY THE PURCHASER PROMPTLY.

PX-266 A

MAXIMUM ALLOWABLE TOLERANCES HAVE BEEN DETERMINED AND DEVIATIONS WILL BE CAUSE FOR REJECTION. REMOVE ALL BURRS AND SHARP EDGES

REQ. PER UNIT

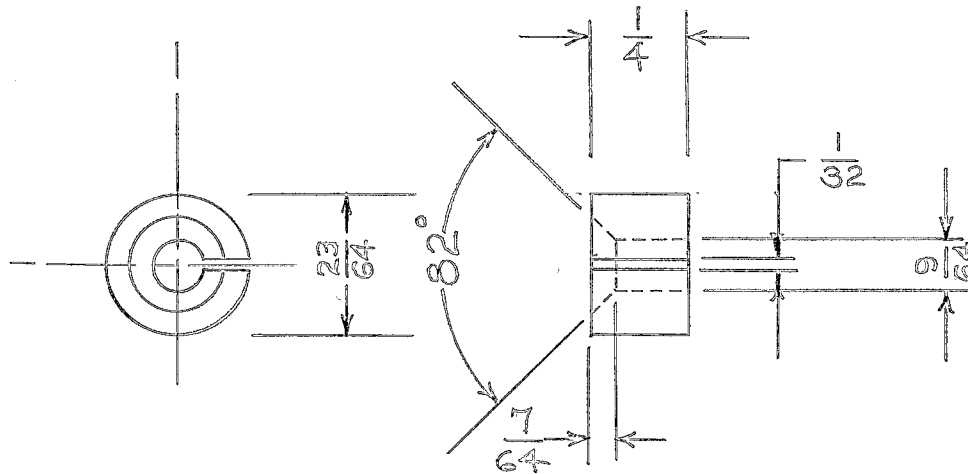
USED ON

MODEL

PROJECT NO.

ASS'Y. NO.

DATE



REF: CF-112 COIL FORM

REF: FRANKLIN FIBER CO.

REQ.	ITEM	PART NO.	DESCRIPTION	SYMBOL
	23/64 ROD		THE TECHNICAL MATERIEL CORP.	
	STOCK SIZE		MAMARONECK. NEW YORK	
	FIBER		BUSHING, COIL	
	MATERIAL	WEIGHT PER PC.		
			P.L.K.3-23-55	###
	TYPE & TEMPER			L.D.C.
			DRAWN	ELEC. DES. APP.
				MECH. DES. APP.
			G.T.O.	
	HEAT TREAT. SPEC.		CHECKED	FINAL APPROVAL
	NATURAL			
	FINISH & SPEC. NO.			

A	1	7/64 WAS 1/16	10/16/55	1	LG	CCD	WDC
ISSUE	ITEM	CHANGED FROM	DATE	CN. NO.	DRAFTS	CHECKER	ENG. APP.

TOLERANCES

SCALE

ALL OTHERS
DEC. DIM. ±
FRAC. DIM. ± 1/64
ANGULAR DIM. ±

DRILL, PUNCH, COMMERCIAL STOCK SIZES AND MANUFACTURERS TOLERANCES ARE NOT INCLUDED.

PX-266 A