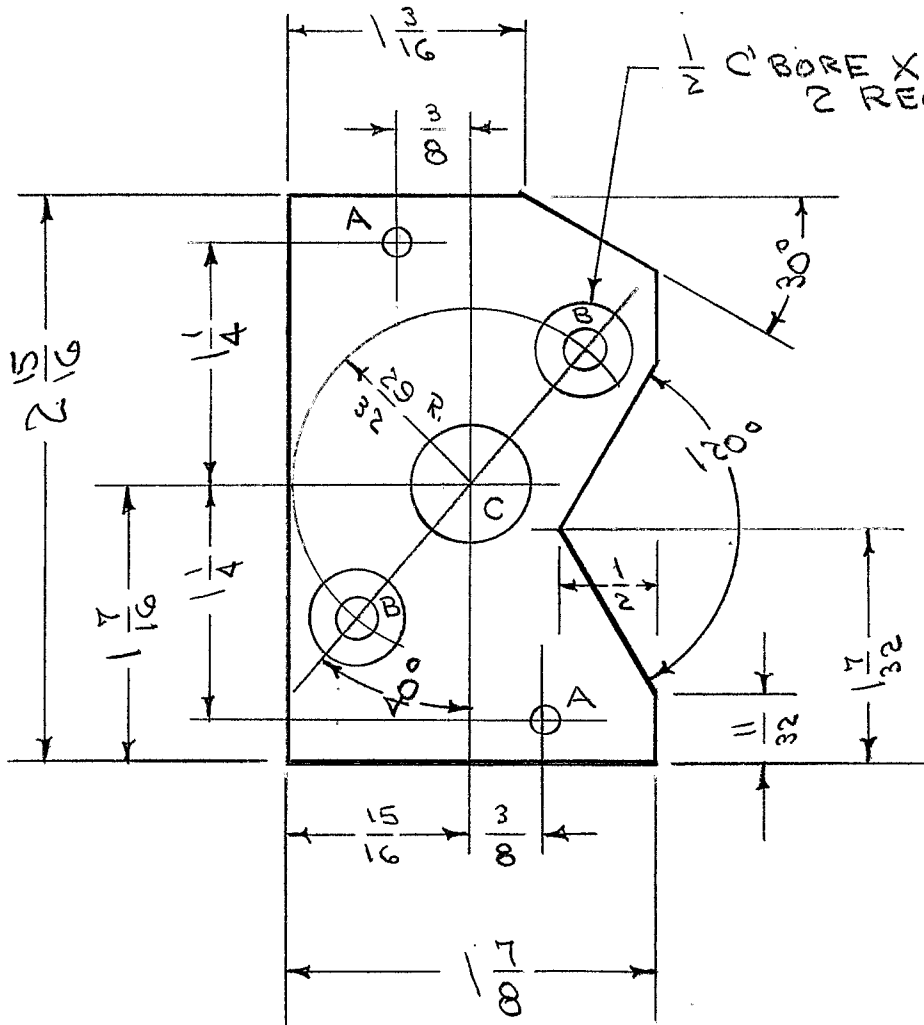


IF IT IS FOUND DESIRABLE TO CHANGE ANY TOLERANCE OR OTHER DETAIL SPECIFIED ON THIS DRAWING NOTIFY THE PURCHASER PROMPTLY.

PX-237 A

MAXIMUM ALLOWABLE TOLERANCES HAVE BEEN DETERMINED AND DEVIATIONS WILL BE CAUSE FOR REJECTION. REMOVE ALL BURRS AND SHARP EDGES

REQ. PER UNIT	USED ON			
	MODEL	PROJECT NO.	ASS'Y. NO.	DATE
1	TAC-1	132	A-720	7-30-54



A - 5/32 (.156) DIA. 2 HOLES REQ.
 B - 7/32 (.218) DIA. 2 " "
 C - 2 1/32 (.656) DIA. 1 " "

REQ.	ITEM	PART NO.	DESCRIPTION	SYMBOL
		1/4 THK.	THE TECHNICAL MATERIEL CORP.	
		STOCK SIZE	MAMARONECK. NEW YORK	
	TEFLON	— # —	SPACER PLATE	
	MATERIAL	WEIGHT PER PC.	LOAD SWITCH	TAC-1
			CDD. 7-30-54	
			DRAWN	ELEC. DES. APP. MECH. DES. APP.
			HEAT TREAT. SPEC.	
			FINISH & SPEC. NO.	
			CHECKED	FINAL APPROVAL
				PX-237 A

A	1	2 1/32 WAS 5/8	8/4/54	1	CDD	AWB	WJC
ISSUE	ITEM	CHANGED FROM	DATE	CN. NO.	DRAFTS	CHECKER	ENG. APP.

TOLERANCES		SCALE
ALL OTHERS	DEC. DIM. ± FRAC. DIM. ± 1/64 ANGULAR DIM. ± 2°	DRILL, PUNCH, COMMERCIAL STOCK SIZES AND MANUFACTURERS TOLERANCES ARE NOT INCLUDED.