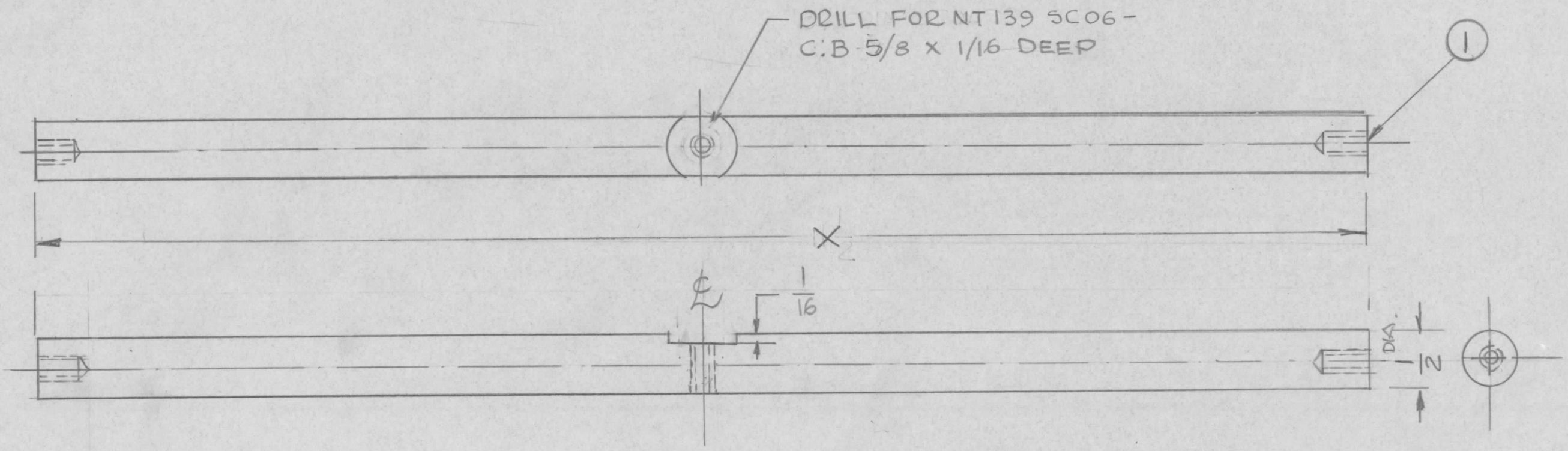


TMC P/No	DIMENSION X
PX1268-	11 1/2
PX1268-1	14 13/16

REVISIONS							
E.M.N. NO	DRAFT	CHKD	ZONE	LTR	DESCRIPTION	DATE	APPROVED
#	MAC			Ø	ORIGINAL RELEASE FOR PRODUCTION	9-18-79	F.B.
22085	G.D.L			A	CHART ADD.	12-12-84	<i>[Signature]</i>



REQ'D	ITEM	PART NUMBER	DESCRIPTION	SYM.
3	1	NT139 SC06	INSERT SCREW THD	

LIST OF MATERIAL

1	DD117-2	AX815
1	DD116-2	AX799
QTY / UNIT	MODEL USED ON	ASS'Y NO.
APPLICATION		
	CODE	

UNLESS OTHERWISE SPECIFIED DIMENSIONS ARE IN INCHES AND INCLUDE CHEMICALLY APPLIED OR PLATED FINISHES		FINAL APPROVAL <i>[Signature]</i>	DATE
DECIMALS .X ± .05 .XX ± .01 .XXX ± .005		MECH. DES.	DATE
FRACTIONS 1/64 TOLS. ANGLES 0° .30'		ELECT. DES.	DATE
MATERIAL 1/2" ROD G10 EPOXY		CHECKED	DATE
FINISH		DRAWN G.D.L	DATE 9-13-79

THE TECHNICAL MATERIEL CORP. MAMARONECK, NEW YORK			
INSULATOR (AC) TERMINAL			
SIZE B	CODE IDENT. NO. 82679	DWG NO. PX1268-	ISSUE A
SCALE 1:1	SHEET OF		

NOTICE TO PERSONS RECEIVING THIS DRAWING  
 THE TECHNICAL MATERIEL CORPORATION claims proprietary right in the material disclosed hereon. This drawing is issued in confidence for engineering information only and may not be reproduced or used to manufacture anything shown hereon without permission from THE TECHNICAL MATERIEL CORPORATION to the user. This drawing is loaned for mutual assistance and is subject to recall at any time.