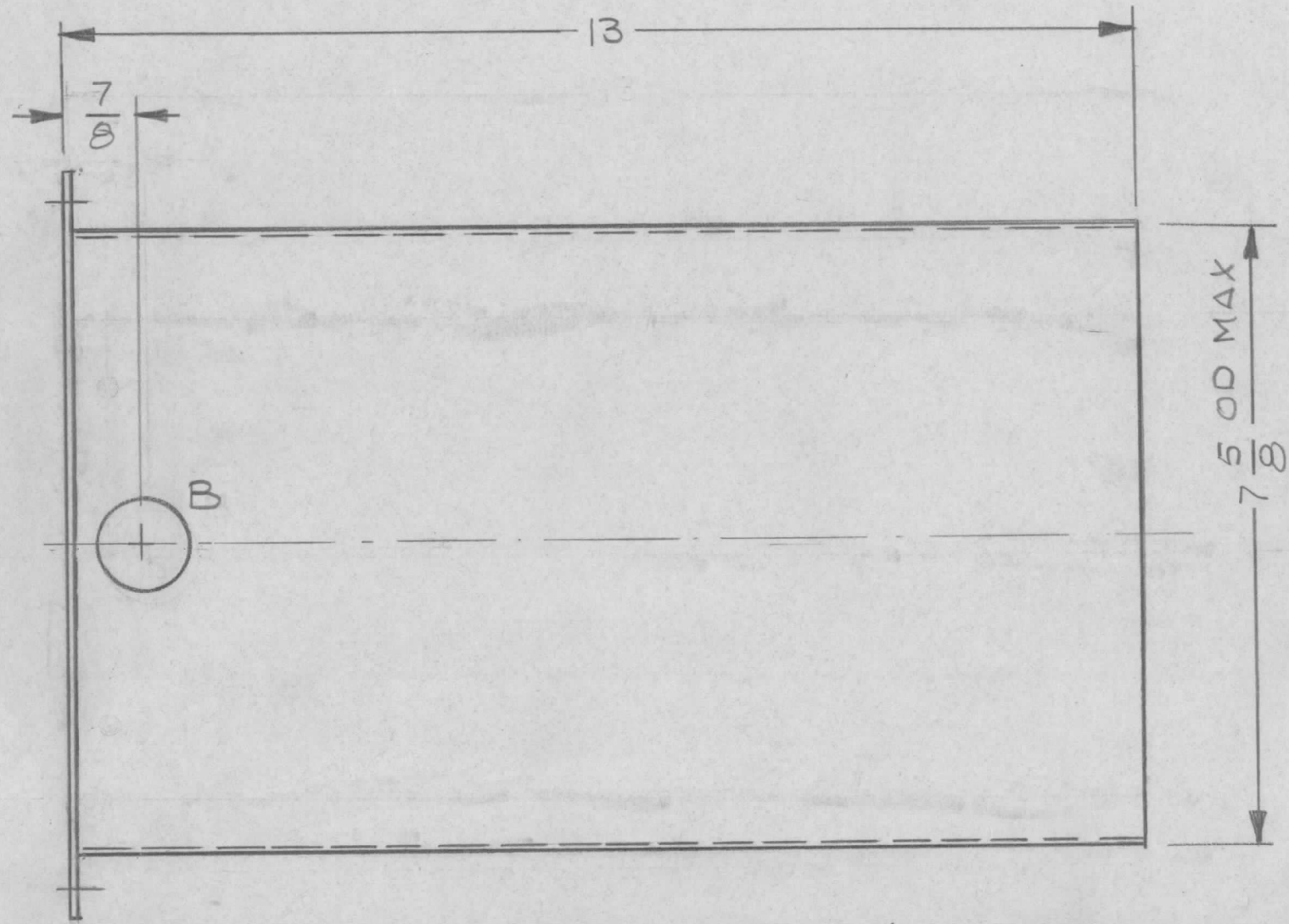
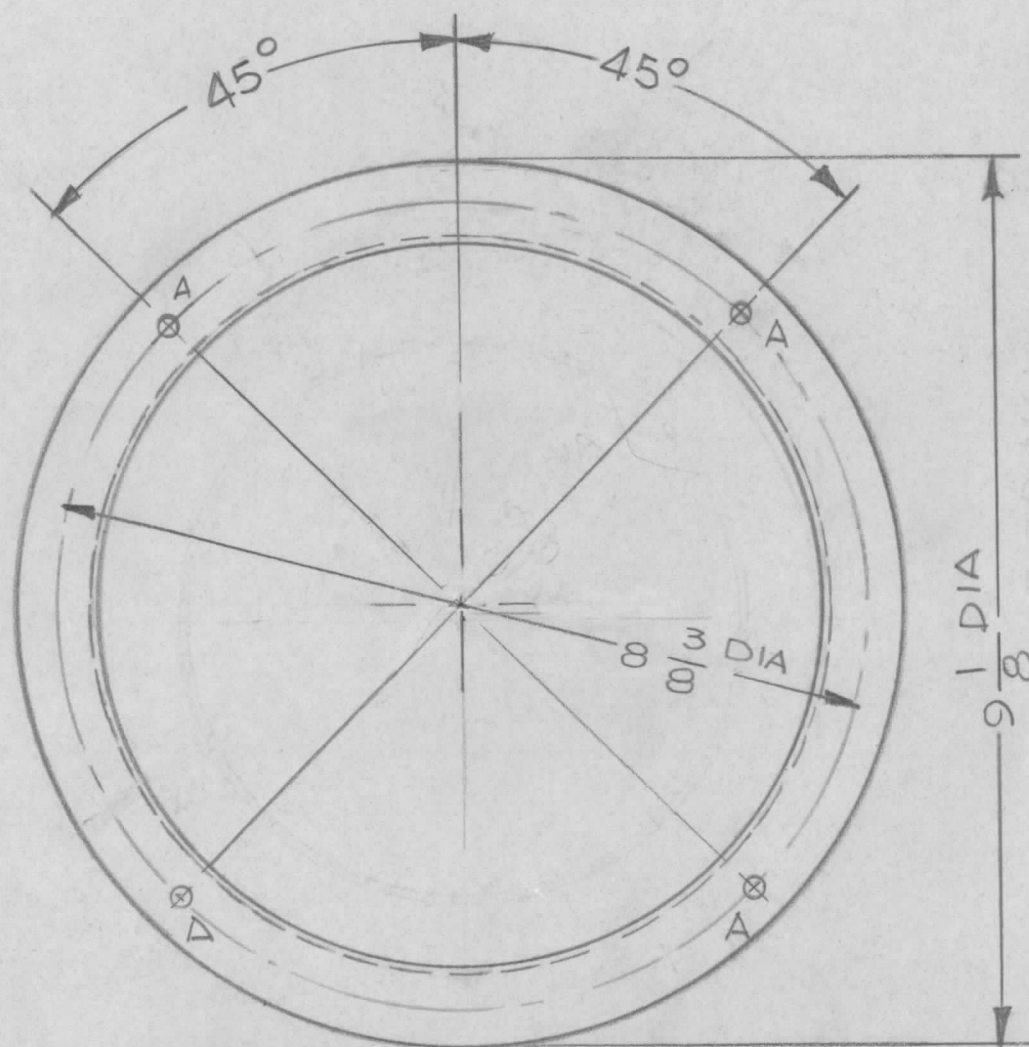


REVISIONS							
E.M.N. NO.	DRAFT	CHKD	ZONE	LTR	DESCRIPTION	DATE	APPROVED
	CL			Ø		8/76	



HOLES:
 A = 13/64 DIA 4 REQ 45° OFF 90° AS SHOWN
 B = 1 1/8 DIA 1 REQ

1	HFTM-10KJ	
QTY / UNIT	MODEL USED ON	ASS'Y NO.
APPLICATION		
	CODE	
NOTICE TO PERSONS RECEIVING THIS DRAWING THE TECHNICAL MATERIEL CORPORATION claims proprietary right in the material disclosed hereon. This drawing is issued in confidence for engineering information only and may not be reproduced or used to manufacture anything shown hereon without permission from THE TECHNICAL MATERIEL CORPORATION to the user. This drawing is loaned for mutual assistance and is subject to recall at any time.		

UNLESS OTHERWISE SPECIFIED DIMENSIONS ARE IN INCHES AND INCLUDE CHEMICALLY APPLIED OR PLATED FINISHES

DECIMALS	FRACTIONS
.X ± .05	1/64
.XX ± .01	TOLS. ANGLES
.XXX ± .005	0°-30'

MATERIAL 3 PLY FIBERGLASS
 FINISH 5115 TMC GREY

REQ'D	ITEM	PART NUMBER	DESCRIPTION	SYM.
LIST OF MATERIAL				
FINAL APPROVAL: [Signature] DATE: 8-12-76 MECH. DES. DATE: ELECT. DES. DATE: CHECKED DATE: DRAWN: G.D.L. DATE: 4-6-76				
THE TECHNICAL MATERIEL CORP. MAMARONECK, NEW YORK				
FLUE, TOP INNER				
SIZE	CODE IDENT. NO.	DWG NO.	ISSUE	
B	82679	PX1256	Ø	
SCALE	SHEET		OF	
	1		1	