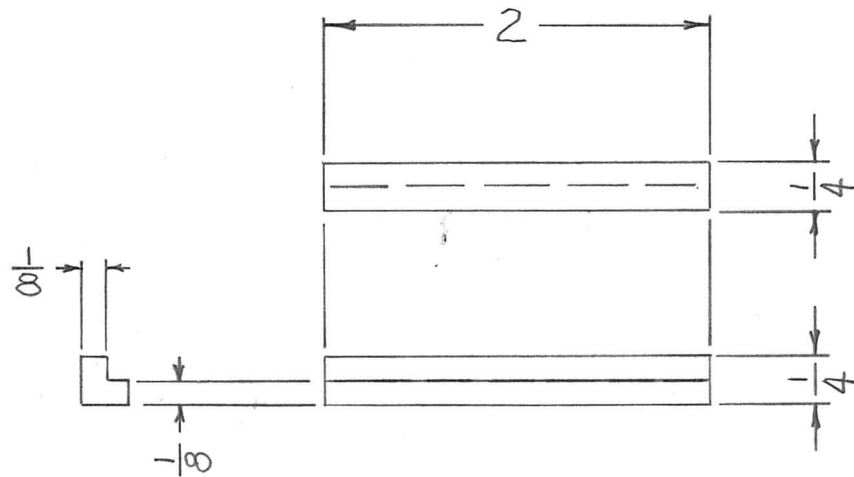


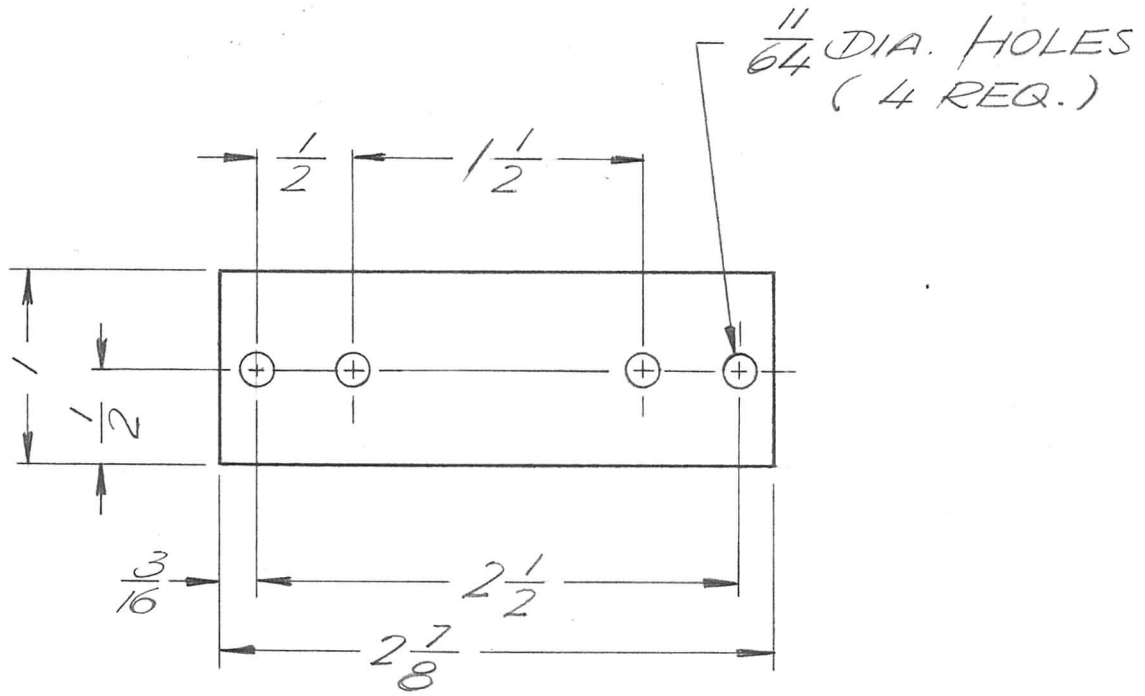
APPLICATION			REVISIONS						
QTY	MODEL USED ON	ASS'Y NO.	LTR	DESCRIPTION	DATE	E.M.N.NO	DRAFT	CHKD	APPD
4	HFTA-10KJB	TR192	Ø	ORIG RELEASE FOR PROD	10/25/70		CV		



UNLESS OTHERWISE SPECIFIED DIMENSIONS ARE IN INCHES AND INCLUDE CHEMICALLY APPLIED OR PLATED FINISHES		REQ'D	ITEM	PART NUMBER	DESCRIPTION	SYM.
DECIMALS: .X ± .05, .XX ± .01, .XXX ± .005 FRACTIONS: 1/64 TOLS.: ANGLES 0° .30'		F. BUDETTI		LIST OF MATERIAL		
MATERIAL: TEFLON		FINAL APPROVAL: <i>[Signature]</i>		DATE: 26 Oct 70	THE TECHNICAL MATERIEL CORP. MAMARONECK, NEW YORK	
FINISH:		MECH. DES. ALPETROCCA		DATE: 10-70	SPACER, COIL	
		ELECT. DES.		DATE:		
		CHECKED		DATE:		
		DRAWN: A. PETROCCA		DATE: 10-70		

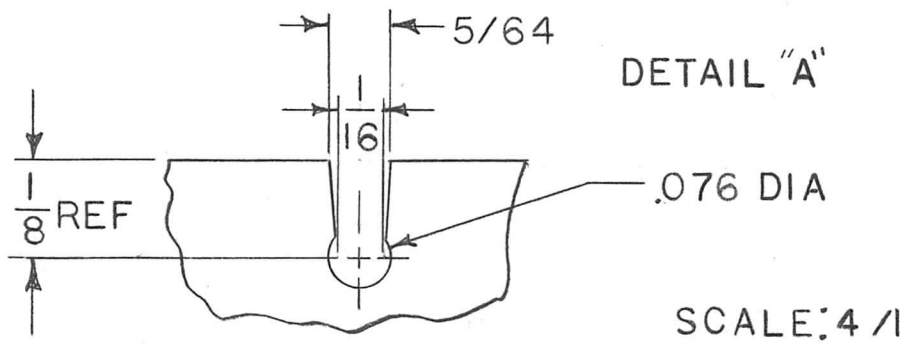
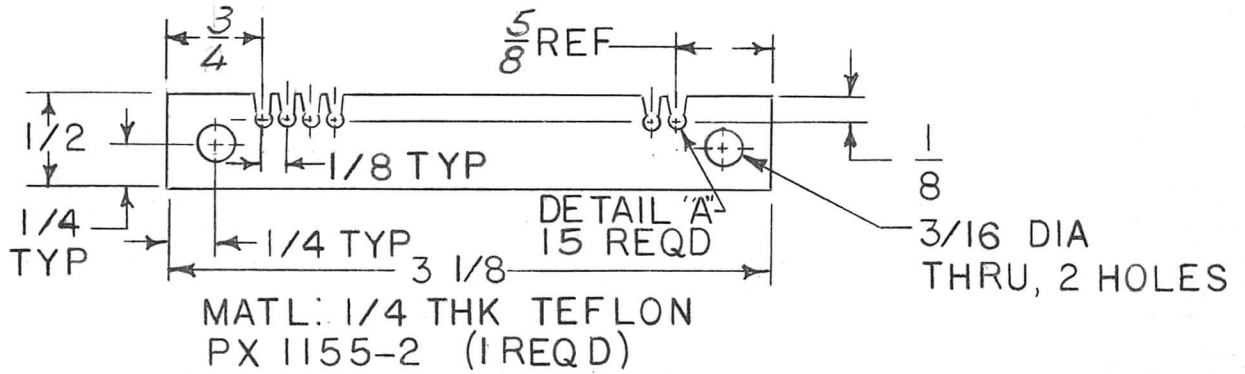
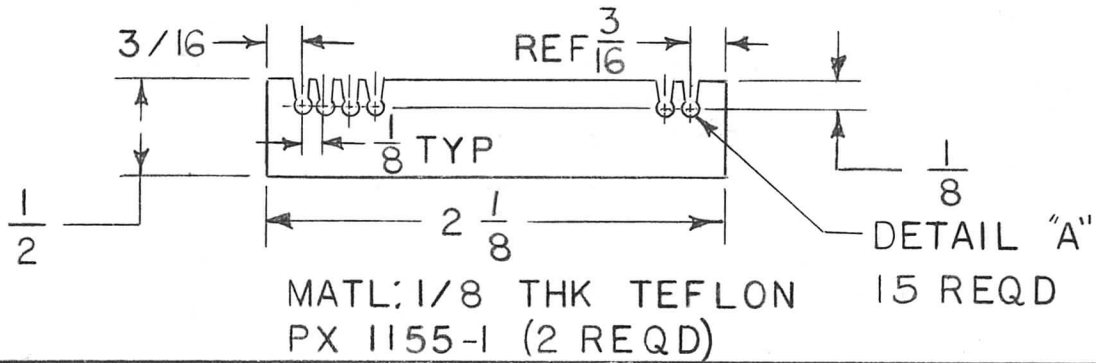
NOTICE TO PERSONS RECEIVING THIS DRAWING THE TECHNICAL MATERIEL CORPORATION claims proprietary right in the material disclosed hereon. This drawing is issued in confidence for engineering information only and may not be reproduced or used to manufacture anything shown hereon without permission from THE TECHNICAL MATERIEL CORPORATION to the user. This drawing is loaned for mutual assistance and is subject to recall at any time.				SIZE: A	CODE IDENT. NO.: 82679	DWG NO.: PX 1153	ISSUE: Ø
SCALE:			SHEET OF:				

APPLICATION			REVISIONS						
QTY	MODEL USED ON	ASS'Y NO.	LTR	DESCRIPTION	DATE	E.M.N.NO	DRAFT	CHKD	APPD
6	LPFB-2		X	EXP. RELEASE					
			Ø	ORIGINAL RELEASE	11/30/70		(C)		



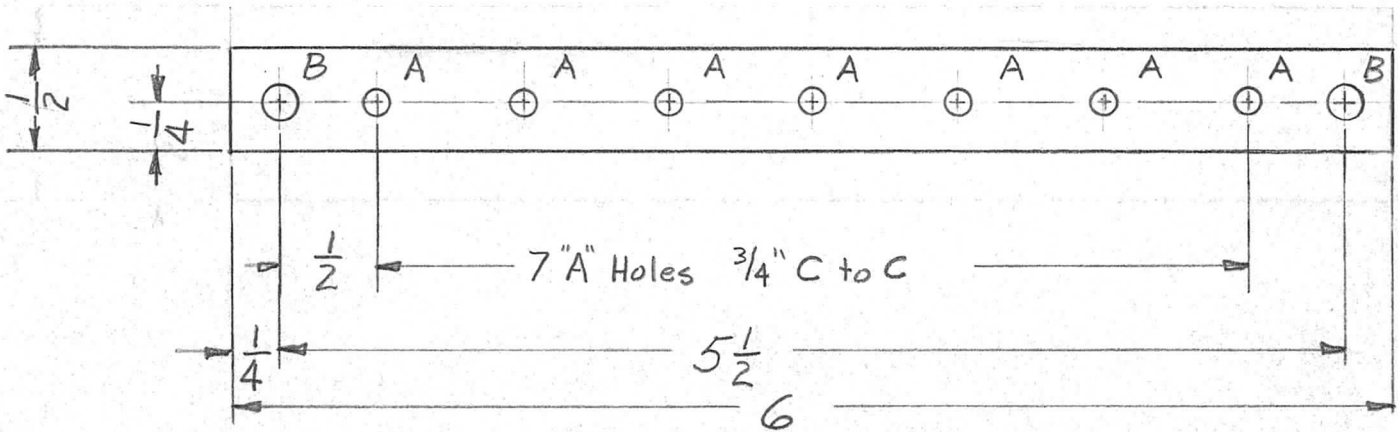
UNLESS OTHERWISE SPECIFIED DIMENSIONS ARE IN INCHES AND INCLUDE CHEMICALLY APPLIED OR PLATED FINISHES		REQ'D	ITEM	PART NUMBER	DESCRIPTION	SYM.		
DECIMALS .X ± .05 .XX ± .01 .XXX ± .005 FRACTIONS 1/64 ANGLES 0° -30'		F. BUDETTI LIST OF MATERIAL						
MATERIAL 1/8 THK PHEONOLIC FINISH NATURAL		FINAL APPROVAL <i>[Signature]</i>	DATE 27 Oct 70	THE TECHNICAL MATERIEL CORP. MAMARONECK, NEW YORK				
		MECH. DES. ALP. <i>[Signature]</i>	DATE 27 Oct 70	TERMINAL BLOCK				
		ELECT. DES.	DATE					
		CHECKED	DATE					
		DRAWN <i>[Signature]</i>	DATE 7/7/70					
NOTICE TO PERSONS RECEIVING THIS DRAWING THE TECHNICAL MATERIEL CORPORATION claims proprietary right in the material disclosed hereon. This drawing is issued in confidence for engineering information only and may not be reproduced or used to manufacture anything shown hereon without permission from THE TECHNICAL MATERIEL CORPORATION to the user. This drawing is loaned for mutual assistance and is subject to recall at any time.					SIZE A	CODE IDENT. NO. 82679	DWG NO. PX1154	ISSUE Ø
					SCALE 1:1	SHEET OF		

APPLICATION			REVISIONS						
QTY	MODEL USED ON	ASS'Y NO.	LTR	DESCRIPTION	DATE	E.M.N.NO	DRAFT	CHKD	APPD
1	TLAMIK	CL463	X	EXP RELEASE	12-10-70		RF		
1	TLAAIK	CL463	Ø	ORIG RELEASE FOR PRO.	12-17-70		CV		PEH
			A	CHNG LG & SLOTS REQD	1-19-71	20193	RF	W	PEH
			B	ON PX 1155-1 CHG. OVRL. DIM.	12/1/72	20516	GE	ef	cf



UNLESS OTHERWISE SPECIFIED DIMENSIONS ARE IN INCHES AND INCLUDE CHEMICALLY APPLIED OR PLATED FINISHES		REQ'D	ITEM	PART NUMBER	DESCRIPTION	SYM.	
LIST OF MATERIAL							
DECIMALS: .X ± .05, .XX ± .01, .XXX ± .005 FRACTIONS: 1/64, ANGLES: 0° - 30'		FINAL APPROVAL: <i>JMM</i> DATE: 18 DEC 70		THE TECHNICAL MATERIEL CORP. MAMARONECK, NEW YORK SPACER, STATIC CHOKE			
MATERIAL AS NOTED		MECH. DES. <i>ase</i> DATE: 12/18/70					
FINISH		ELECT. DES. DATE:					
		CHECKED <i>W</i> DATE: 12/16/70					
		DRAWN <i>R. Fociano</i> DATE: 12-10-70					
NOTICE TO PERSONS RECEIVING THIS DRAWING THE TECHNICAL MATERIEL CORPORATION claims proprietary right in the material disclosed hereon. This drawing is issued in confidence for engineering information only and may not be reproduced or used to manufacture anything shown hereon without permission from THE TECHNICAL MATERIEL CORPORATION to the user. This drawing is loaned for mutual assistance and is subject to recall at any time.				SIZE: A	CODE IDENT. NO.: 82679	DWG NO.: PX 1155	ISSUE: B
SCALE: 1/1					SHEET: 1 OF 1		

APPLICATION			REVISIONS						
QTY	MODEL USED ON	ASS'Y NO.	LTR	DESCRIPTION	DATE	E.M.N.NO	DRAFT	CHKD	APPD
1	TFP-1K		Ø	ORIG RELEASE FOR PROD	10/14/71		CV		

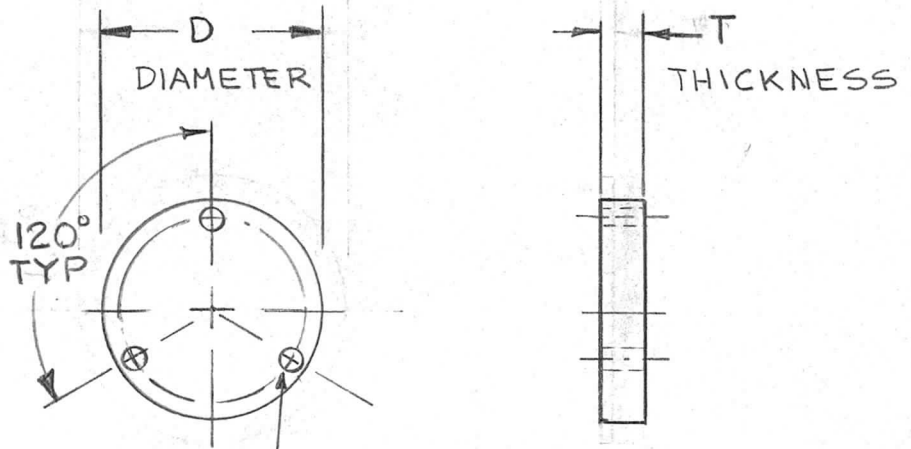


A ~ 1/8 DIA 7 REQ

B ~ 1/16 DIA 2 REQ

UNLESS OTHERWISE SPECIFIED DIMENSIONS ARE IN INCHES AND INCLUDE CHEMICALLY APPLIED OR PLATED FINISHES		REQ'D	ITEM	PART NUMBER	DESCRIPTION	SYM.
DECIMALS .X ± .05 .XX ± .01 .XXX ± .005 FRACTIONS 1/64 TOLS. ANGLES 0° - 30'		LIST OF MATERIAL				
MATERIAL 1/8" THK XXXP PHENOLIC		FINAL APPROVAL			THE TECHNICAL MATERIEL CORP. MAMARONECK, NEW YORK STIFFENER, PC BD	
FINISH S113 FUNGUS PROOF		MECH. DES.				
		ELECT. DES.				
		CHECKED				
		DRAWN				
NOTICE TO PERSONS RECEIVING THIS DRAWING THE TECHNICAL MATERIEL CORPORATION claims proprietary right in the material disclosed hereon. This drawing is issued in confidence for engineering information only and may not be reproduced or used to manufacture anything shown hereon without permission from THE TECHNICAL MATERIEL CORPORATION to the user. This drawing is loaned for mutual assistance and is subject to recall at any time.		SIZE	CODE IDENT. NO.	DWG NO.	ISSUE	
		A	82679	PX 1163	Ø	
		SCALE			SHEET	OF

APPLICATION			REVISIONS						
QTY	MODEL USED ON	ASS'Y NO.	LTR	DESCRIPTION	DATE	E.M.N.NO	DRAFT	CHKD	APPD
	STD		Ø	ORIG RELEASE FOR PROD	6/21/71		CV		PEB
			A	P/N FORM WAS PX1164-0.750 R020. 3 HOLES ADD	3-7-74	21143	G.DL	CL	CL



.140 DIA HOLE
ON .936 BC
3 REQ'D

P/N TO BE IN THE FOLLOWING FORM

PX1164 - 1.125 R250

THICKNESS
IN 1/1000TH INCHES.

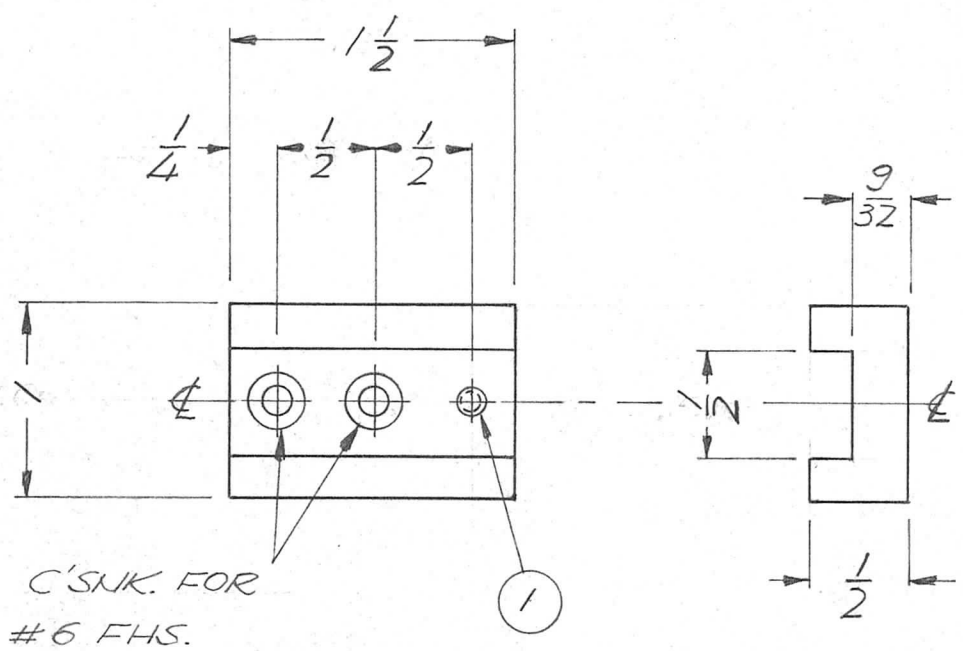
DIAMETER
IN INCHES

UNLESS OTHERWISE SPECIFIED DIMENSIONS ARE IN INCHES AND INCLUDE CHEMICALLY APPLIED OR PLATED FINISHES		REQ'D	ITEM	PART NUMBER	DESCRIPTION	SYM.
LIST OF MATERIAL						
DECIMALS: .X ± .05, .XX ± .01, .XXX ± .005 FRACTIONS: 1/64, ANGLES: 0° - 30'		FINAL APPROVAL		DATE	THE TECHNICAL MATERIEL CORP. MAMARONECK, NEW YORK INS, ROUND, TEF	
MATERIAL: TEFLON		MECH. DES.		DATE		
FINISH: NATURAL		ELECT. DES.		DATE		
		CHECKED		DATE		
		DRAWN		DATE		
NOTICE TO PERSONS RECEIVING THIS DRAWING THE TECHNICAL MATERIEL CORPORATION claims proprietary right in the material disclosed hereon. This drawing is issued in confidence for engineering information only and may not be reproduced or used to manufacture anything shown hereon without permission from THE TECHNICAL MATERIEL CORPORATION to the user. This drawing is loaned for mutual assistance and is subject to recall at any time.				SIZE: A	CODE IDENT. NO.: 82679	DWG NO.: PX1164
SCALE					SHEET	OF

APPLICATION

REVISIONS

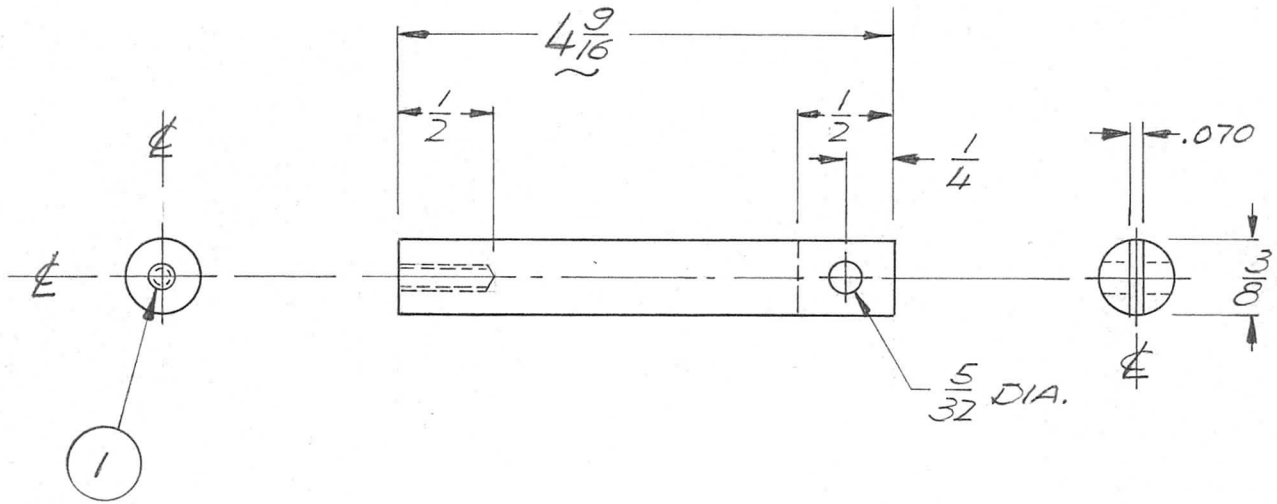
QTY	MODEL USED ON	ASS'Y NO.	LTR	DESCRIPTION	DATE	E.M.N.NO	DRAFT	CHKD	APPD
1	MAT 5	A 4903	Ø	ORIG RELEASE FOR PROD	3/6/72		Q		
			A	DECIMAL DIMS. CHG. TO FRACT.	5-10-72	20678	GE	Q	Q



UNLESS OTHERWISE SPECIFIED DIMENSIONS ARE IN INCHES AND INCLUDE CHEMICALLY APPLIED OR PLATED FINISHES		1	1	NT139LC08-20	HELI COIL	
DECIMALS .X ± .05 .XX ± .01 .XXX ± .005	FRACTIONS 1/64 ANGLES 0° - 30'	REQ'D	ITEM	PART NUMBER	DESCRIPTION	SYM.
MATERIAL G-10 EPOXY		F.B LIST OF MATERIAL				
FINISH		FINAL APPROVAL	DATE	THE TECHNICAL MATERIEL CORP. MAMARONECK, NEW YORK		
		MECH. DES.	DATE	CONTACT GUIDE		
		ELECT. DES.	DATE			
		CHECKED	DATE			
		DRAWN	DATE			

NOTICE TO PERSONS RECEIVING THIS DRAWING THE TECHNICAL MATERIEL CORPORATION claims proprietary right in the material disclosed herein. This drawing is issued in confidence for engineering information only and may not be reproduced or used to manufacture anything shown hereon without permission from THE TECHNICAL MATERIEL CORPORATION to the user. This drawing is loaned for mutual assistance and is subject to recall at any time.	SIZE	CODE IDENT. NO.	DWG NO.	ISSUE
	A	82679	PX 1168	A
SCALE 1:1		SHEET		OF

QTY	MODEL USED ON	ASSY NO.	LTR	DESCRIPTION	DATE	E.M.N.NO	DRAFT	CHKD	APPD
1	MAT-5	A4903	<i>D</i>	ORIG RELEASE FOR PROD	3/16/72		<i>W</i>		
			A.	DIM. 49/16 WAS 29/16	5.10.72	20678	GE	<i>sp</i>	<i>sp</i>



REQ'D	ITEM	PART NUMBER	DESCRIPTION	SYM.
1	1	NT139LC08-30	HELI COIL	

UNLESS OTHERWISE SPECIFIED DIMENSIONS ARE IN INCHES AND INCLUDE CHEMICALLY APPLIED OR PLATED FINISHES

F.B.

LIST OF MATERIAL

DECIMALS .X ± .05 .XX ± .01 .XXX ± .005 FRACTIONS 1/64 ANGLES 0° -30'

FINAL APPROVAL	DATE
MECH. DES.	DATE
ELECT. DES.	DATE
CHECKED	DATE
DRAWN	DATE

THE TECHNICAL MATERIEL CORP.
MAMARONECK, NEW YORK

MATERIAL G10 EPOXY

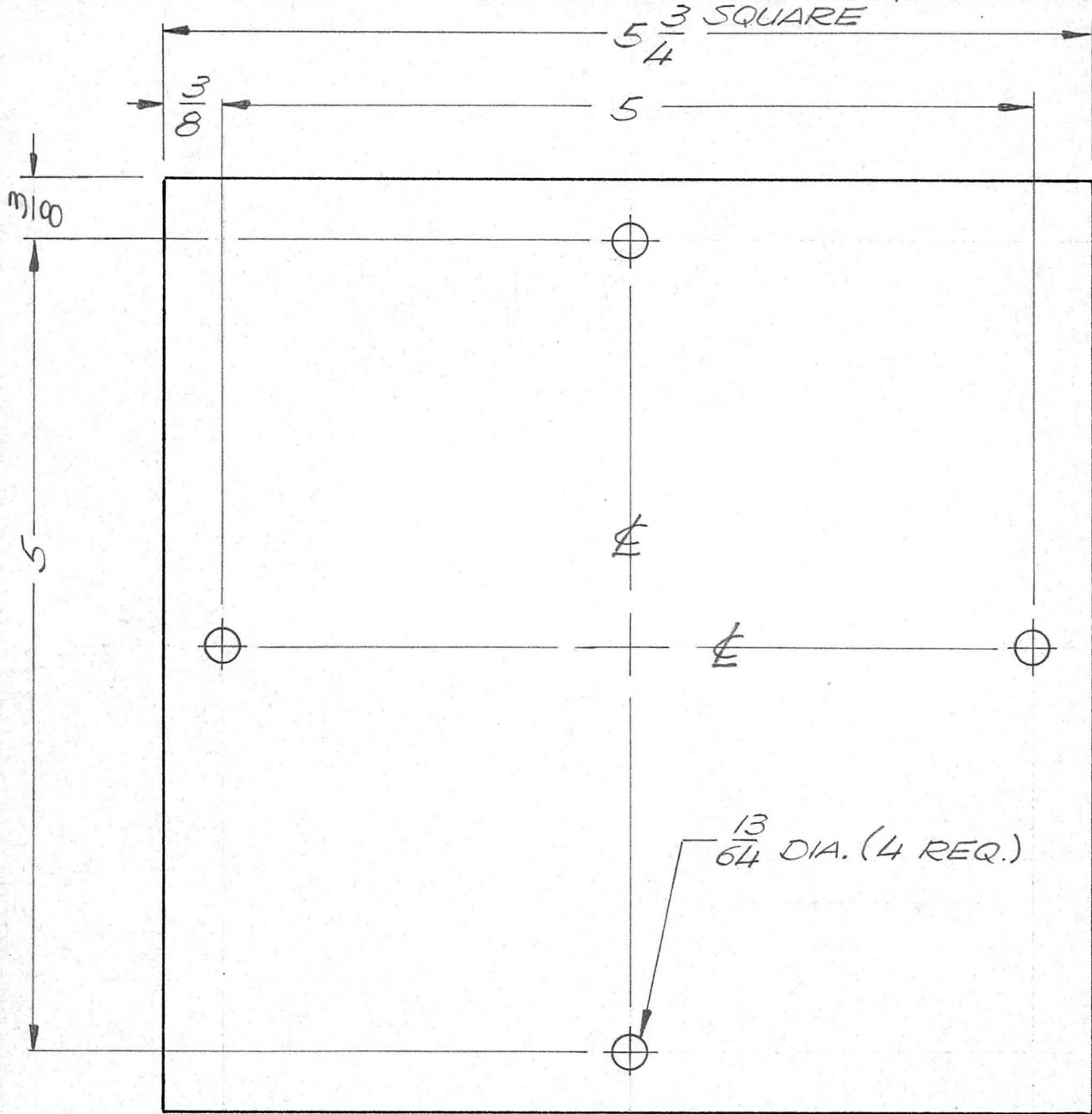
FINISH

SHAFT ACTUATOR

NOTICE TO PERSONS RECEIVING THIS DRAWING THE TECHNICAL MATERIEL CORPORATION claims proprietary right in the material disclosed hereon. This drawing is issued in confidence for engineering information only and may not be reproduced or used to manufacture anything shown hereon without permission from THE TECHNICAL MATERIEL CORPORATION to the user. This drawing is loaned for mutual assistance and is subject to recall at any time.

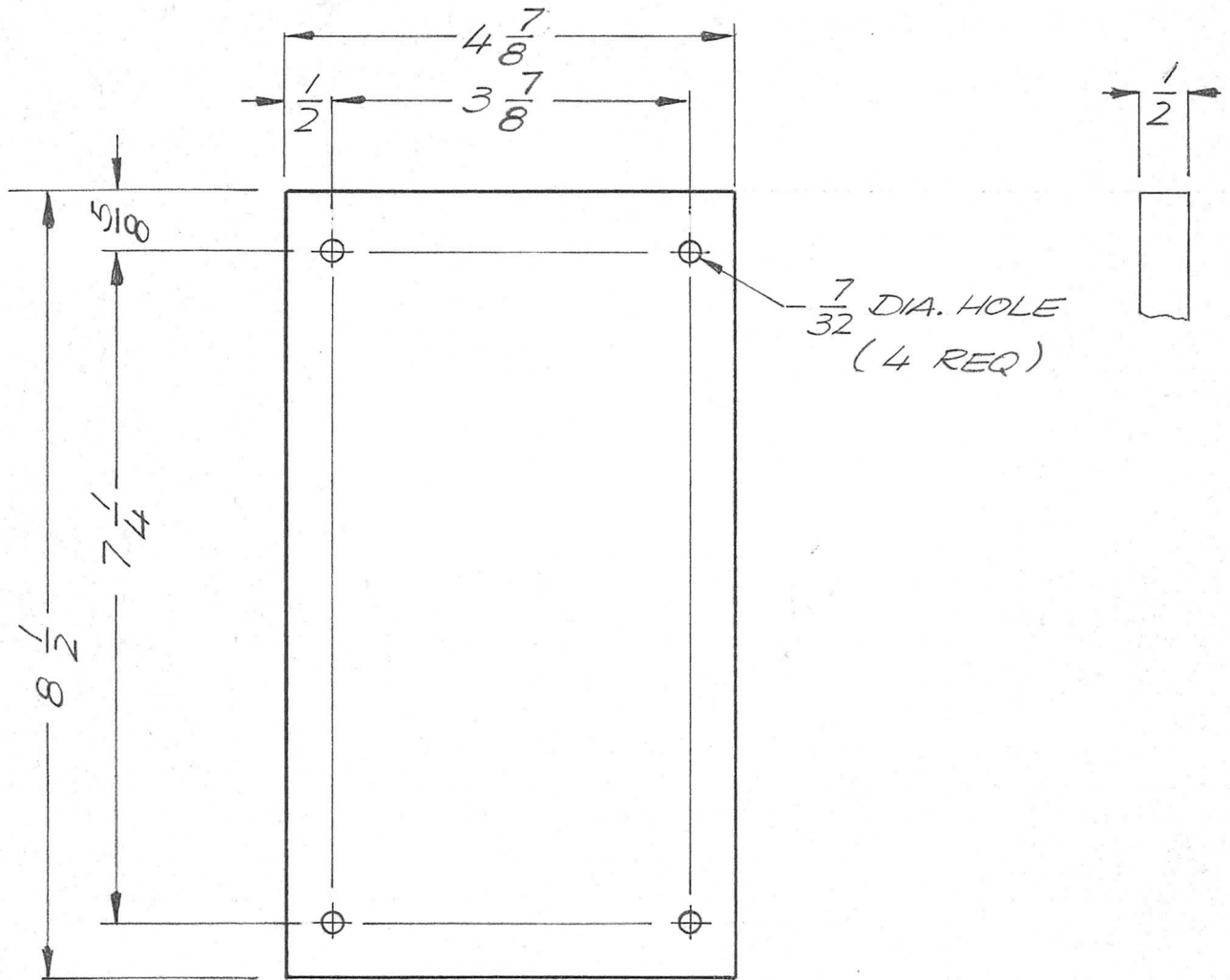
SIZE	CODE IDENT. NO.	DWG NO.	ISSUE
A	82679	PX 1169	A
SCALE 1:1		SHEET OF	

QTY	MODEL USED ON	ASS'Y NO.	LTR	DESCRIPTION	DATE	E.M.N.NO	DRAFT	CHKD	APPD
1	MAT-5	BMA-475	Ø	ORIG RELEASE FOR PROD	3/6/78		CU		



UNLESS OTHERWISE SPECIFIED DIMENSIONS ARE IN INCHES AND INCLUDE CHEMICALLY APPLIED OR PLATED FINISHES		REQ'D	ITEM	PART NUMBER	DESCRIPTION	SYM.
DECIMALS: .X ± .05, .XX ± .01, .XXX ± .005 FRACTIONS: 1/64 TOLS. ANGLES: 0° -30'		F.B. LIST OF MATERIAL				
MATERIAL 1/8 PLEXIGLASS FINISH NATURAL		FINAL APPROVAL <i>JMM</i> MECH. DES. <i>AC</i> ELECT. DES. CHECKED DRAWN <i>GE</i>	DATE <i>3/14/78</i> DATE DATE DATE	THE TECHNICAL MATERIEL CORP. MAMARONECK, NEW YORK WINDOW, VIEW		
NOTICE TO PERSONS RECEIVING THIS DRAWING THE TECHNICAL MATERIEL CORPORATION claims proprietary right in the material disclosed hereon. This drawing is issued in confidence for engineering information only and may not be reproduced or used to manufacture anything shown hereon without permission from THE TECHNICAL MATERIEL CORPORATION to the user. This drawing is loaned for mutual assistance and is subject to recall at any time.		SIZE A SCALE 1:1	CODE IDENT. NO. 82679	DWG NO. PX 1170	ISSUE Ø SHEET OF	

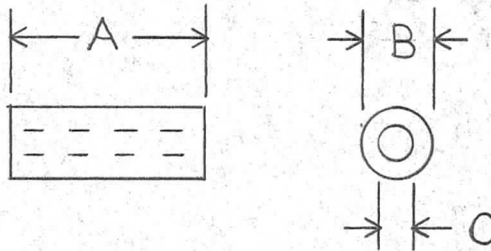
APPLICATION			REVISIONS						
QTY	MODEL USED ON	ASS'Y NO.	LTR	DESCRIPTION	DATE	E.M.N.NO	DRAFT	CHKD	APPD
2	MFTR 10KES	BMA184	Ø	ORIG RELEASE FOR PROD					CV



UNLESS OTHERWISE SPECIFIED DIMENSIONS ARE IN INCHES AND INCLUDE CHEMICALLY APPLIED OR PLATED FINISHES		REQ'D	ITEM	PART NUMBER	DESCRIPTION	SYM.
DECIMALS: .X ± .05 .XX ± .01 .XXX ± .005 FRACTIONS: 1/64 TOLS. ANGLES: 0° - 30'		F.B. LIST OF MATERIAL				
MATERIAL 1/2" G10 EPOXY FINISH NATURAL		FINAL APPROVAL <i>[Signature]</i> MECH. DES. <i>AC</i> ELECT. DES. CHECKED DRAWN <i>GE</i>		DATE 29 Feb 72 DATE DATE 10/17/71		THE TECHNICAL MATERIEL CORP. MAMARONECK, NEW YORK SIDE PLATE
NOTICE TO PERSONS RECEIVING THIS DRAWING THE TECHNICAL MATERIEL CORPORATION claims proprietary right in the material disclosed hereon. This drawing is issued in confidence for engineering information only and may not be reproduced or used to manufacture anything shown hereon without permission from THE TECHNICAL MATERIEL CORPORATION to the user. This drawing is loaned for mutual assistance and is subject to recall at any time.		SIZE A	CODE IDENT. NO. 82679	DWG NO. PX 1171	ISSUE <i>[Symbol]</i>	
SCALE 1/2		SHEET		OF		

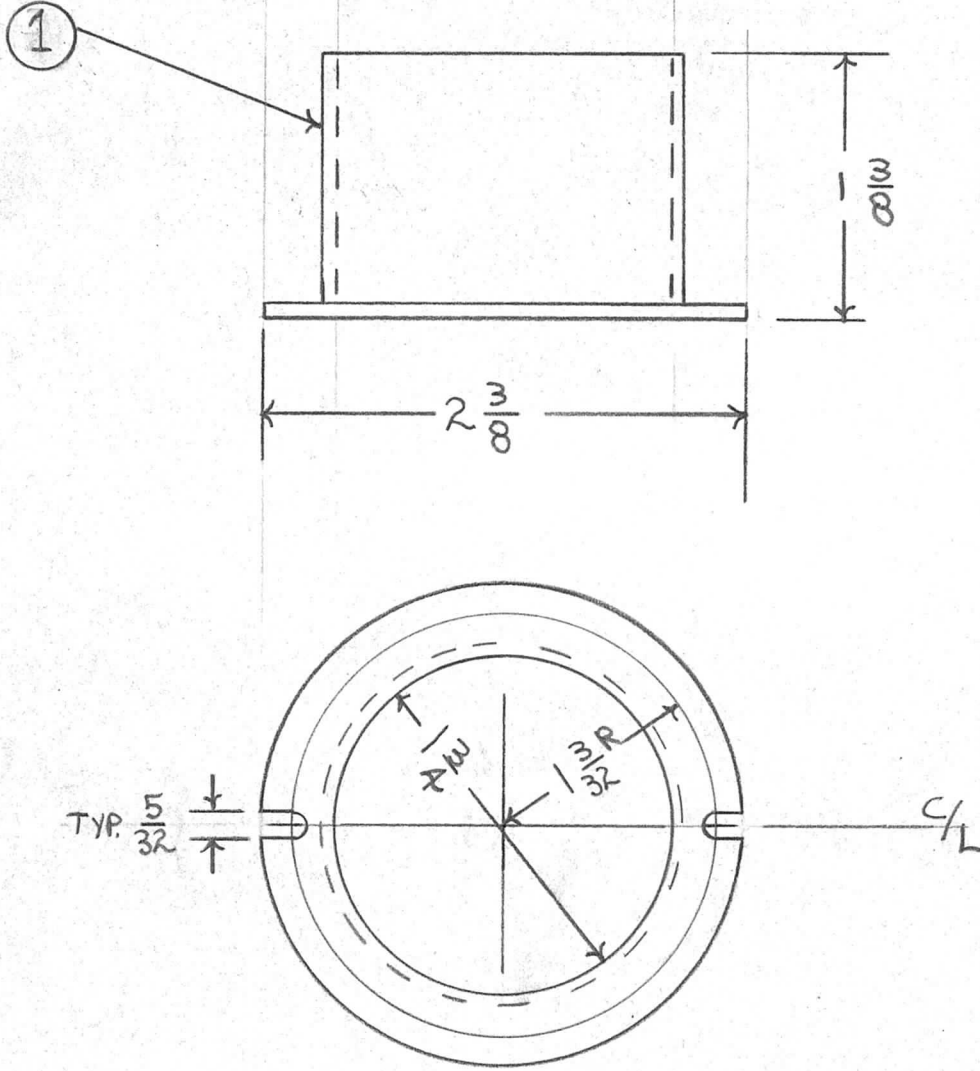
QTY	MODEL USED ON	ASS'Y NO.	LTR	DESCRIPTION	DATE	E.M.N.NO	DRAFT	CHKD	APPD
2	TLAAIK	A4909	Ø	ORIG RELEASE FOR PROD	1/3/72		CV		

TMC PART NO.	OVERALL DIM.			TYP. OF MATL.
	A	B	C	
PX 1175-1	.250	.187	.113	G-11 RESIN GLASS-EPOXY



UNLESS OTHERWISE SPECIFIED DIMENSIONS ARE IN INCHES AND INCLUDE CHEMICALLY APPLIED OR PLATED FINISHES		REQ'D	ITEM	PART NUMBER	DESCRIPTION	SYM.
DECIMALS: .X ± .05, .XX ± .01, .XXX ± .005 FRACTIONS: 1/64, ANGLES: 0° -30'		LIST OF MATERIAL				
MATERIAL	FINAL APPROVAL				THE TECHNICAL MATERIEL CORP. MAMARONECK, NEW YORK SPACER NON-METALLIC	
FINISH	MECH. DES.					
	ELECT. DES.					
	CHECKED					
	DRAWN					
NOTICE TO PERSONS RECEIVING THIS DRAWING THE TECHNICAL MATERIEL CORPORATION claims proprietary right in the material disclosed hereon. This drawing is issued in confidence for engineering information only and may not be reproduced or used to manufacture anything shown hereon without permission from THE TECHNICAL MATERIEL CORPORATION to the user. This drawing is loaned for mutual assistance and is subject to recall at any time.					SIZE A	CODE IDENT. NO. 82679
					DWG NO. PX 1175	ISSUE
SCALE					SHEET	OF

QTY	MODEL USED ON	ASS'Y NO.	LTR	DESCRIPTION	DATE	E.M.N.NO	DRAFT	CHKD	APPD
1	TLAA 1K	BMA460	Ø	ORIG RELEASE FOR PROD	1/9/72		CV		



REQ'D	ITEM	PART NUMBER	DESCRIPTION	SYM.
1	1	FP206-3	FLUE, OUTSIDE FLANGE	

UNLESS OTHERWISE SPECIFIED DIMENSIONS ARE IN INCHES AND INCLUDE CHEMICALLY APPLIED OR PLATED FINISHES

DECIMALS: .X ± .05, .XX ± .01, .XXX ± .005
 FRACTIONS: 1/64
 TOLS. ANGLES: 0° .30'

MATERIAL 3 PLY FIBER GLASS

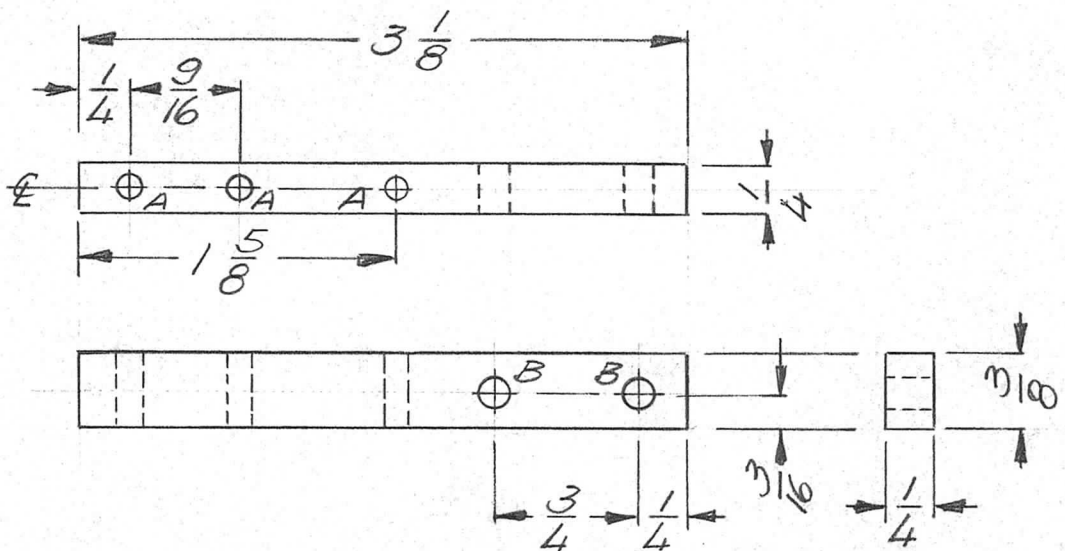
FINISH TMC GREY

LIST OF MATERIAL			
FINAL APPROVAL <i>R. Trotter</i>	DATE 12/2/71	THE TECHNICAL MATERIEL CORP. MAMARONECK, NEW YORK FLUE, AIR	
MECH. DES. <i>R. Trotter</i>	DATE 12/2/71		
ELECT. DES.	DATE		
CHECKED	DATE		
DRAWN <i>R. Trotter</i>	DATE 12/2/71		

NOTICE TO PERSONS RECEIVING THIS DRAWING
 THE TECHNICAL MATERIEL CORPORATION claims proprietary right in the material disclosed herein. This drawing is issued in confidence for engineering information only and may not be reproduced or used to manufacture anything shown hereon without permission from THE TECHNICAL MATERIEL CORPORATION to the user. This drawing is loaned for mutual assistance and is subject to recall at any time.

SIZE	CODE IDENT. NO.	DWG NO.	ISSUE
A	82679	PX-1174	Ø
SCALE		SHEET	OF

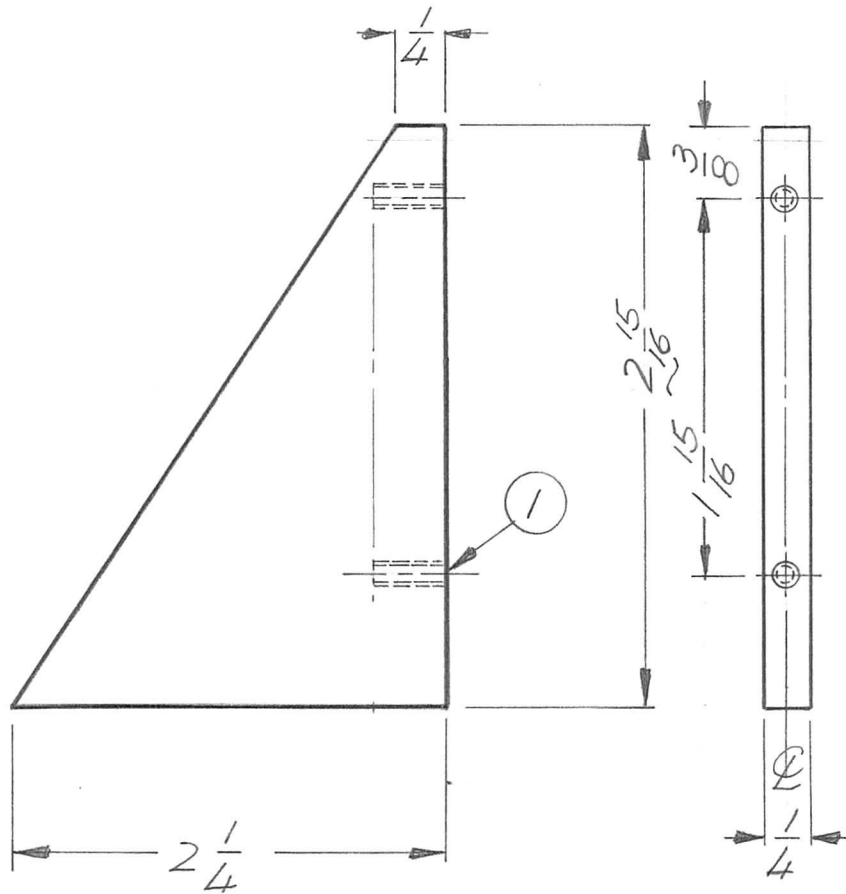
APPLICATION			REVISIONS						
QTY	MODEL USED ON	ASS'Y NO.	LTR	DESCRIPTION	DATE	E.M.N.NO	DRAFT	CHKD	APPD
1	KIT 382	AX5144	0	ORIG RELEASE FOR PROD	3/30/72		CV		



A HOLE - $\frac{1}{8}$ DIA. - 3 REQ.
 B HOLE - $\frac{5}{32}$ DIA. - 2 REQ.

UNLESS OTHERWISE SPECIFIED DIMENSIONS ARE IN INCHES AND INCLUDE CHEMICALLY APPLIED OR PLATED FINISHES	REQ'D	ITEM	PART NUMBER	DESCRIPTION	SYM.
DECIMALS .X \pm .05 .XX \pm .01 .XXX \pm .005 FRACTIONS 1/64 ANGLES 0° - 30'	F.B. LIST OF MATERIAL				
MATERIAL G11 FINISH	FINAL APPROVAL <i>AL PETROCCA</i> MECH. DES. AL PETROCCA ELECT. DES. CHECKED DRAWN GE	DATE 29 Mar 72 DATE 3-1-72 DATE DATE DATE 2/18/72	THE TECHNICAL MATERIEL CORP. MAMARONECK, NEW YORK ARM. SWITCH		
NOTICE TO PERSONS RECEIVING THIS DRAWING THE TECHNICAL MATERIEL CORPORATION claims proprietary right in the material disclosed hereon. This drawing is issued in confidence for engineering information only and may not be reproduced or used to manufacture anything shown hereon without permission from THE TECHNICAL MATERIEL CORPORATION to the user. This drawing is loaned for mutual assistance and is subject to recall at any time.				SIZE A	CODE IDENT. NO. 82679
		DWG NO. PX 1179	ISSUE 0	SCALE 1:1 SHEET OF	

APPLICATION			REVISIONS						
QTY	MODEL USED ON	ASS'Y NO.	LTR	DESCRIPTION	DATE	E.M.N.NO	DRAFT	CHKD	APPD
2	TLAA-1K	AX5132	Ø	ORIGINAL RELEASE	4/4/73		Ø		

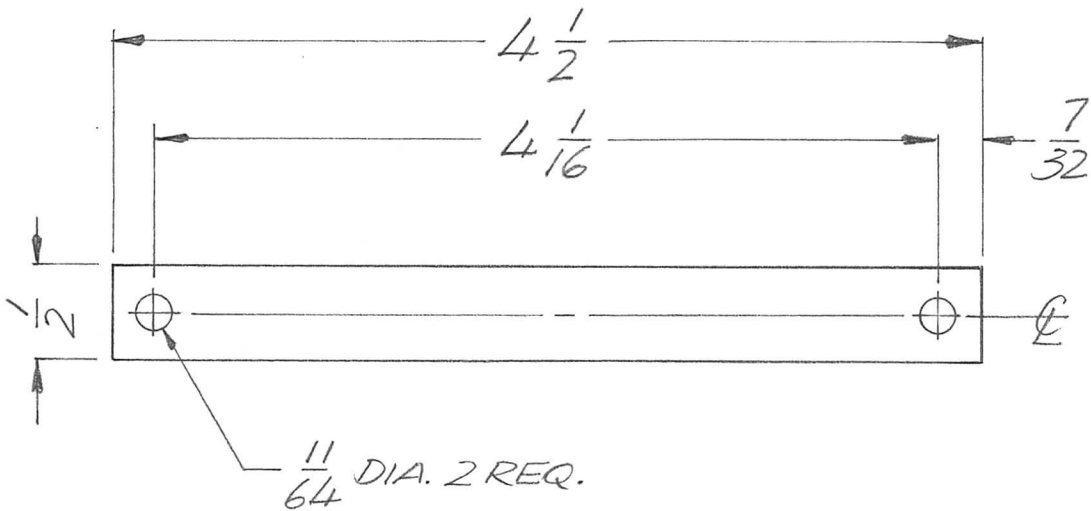


REQ'D	ITEM	PART NUMBER	DESCRIPTION	SYM.
2	1	NT1395C06-15	INSERT SCREW THREAD	
UNLESS OTHERWISE SPECIFIED DIMENSIONS ARE IN INCHES AND INCLUDE CHEMICALLY APPLIED OR PLATED FINISHES				
F.B. LIST OF MATERIAL				
DECIMALS .X ± .05 .XX ± .01 .XXX ± .005		FRACTIONS 1/64 ANGLES 0°-30'		THE TECHNICAL MATERIEL CORP. MAMARONECK, NEW YORK SUPPORT, PLATE
MATERIAL 1/4 THK G11 EPOXY		MECH. DES.	DATE	
FINISH		ELECT. DES.	DATE	
		CHECKED	DATE	
		DRAWN	DATE	

NOTICE TO PERSONS RECEIVING THIS DRAWING
THE TECHNICAL MATERIEL CORPORATION claims proprietary right in the material disclosed hereon. This drawing is issued in confidence for engineering information only and may not be reproduced or used to manufacture anything shown hereon without permission from **THE TECHNICAL MATERIEL CORPORATION** to the user. This drawing is loaned for mutual assistance and is subject to recall at any time.

SIZE	CODE IDENT. NO.	DWG NO.	ISSUE
A	82679	PX1180	Ø
SCALE 1:1		SHEET	OF

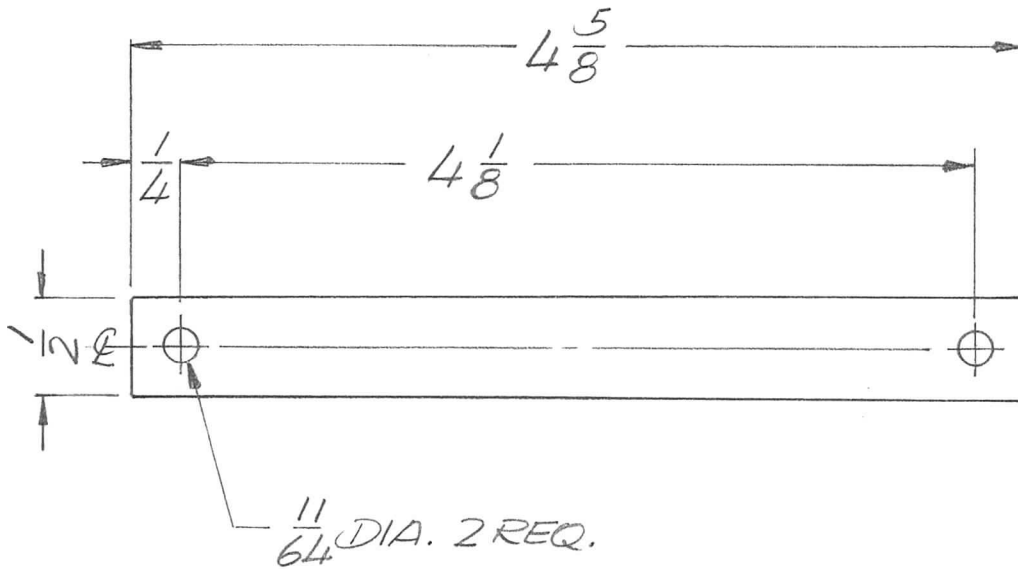
APPLICATION			REVISIONS						
QTY	MODEL USED ON	ASS'Y NO.	LTR	DESCRIPTION	DATE	E.M.N.NO	DRAFT	CHKD	APPD
2	ATU 350		Ø	ORIGINAL RELEASE	10/26/72		ES		



UNLESS OTHERWISE SPECIFIED DIMENSIONS ARE IN INCHES AND INCLUDE CHEMICALLY APPLIED OR PLATED FINISHES	REQ'D	ITEM	PART NUMBER	DESCRIPTION	SYM.
DECIMALS .X ± .05 .XX ± .01 .XXX ± .005 FRACTIONS 1/64 TOLS. ANGLES 0°-30'				LIST OF MATERIAL	
		F.B.		THE TECHNICAL MATERIEL CORP. MAMARONECK, NEW YORK	
		MATERIAL 1/16 G11 EPOXY			
		FINISH			
				SUPPORT COIL MTG.	

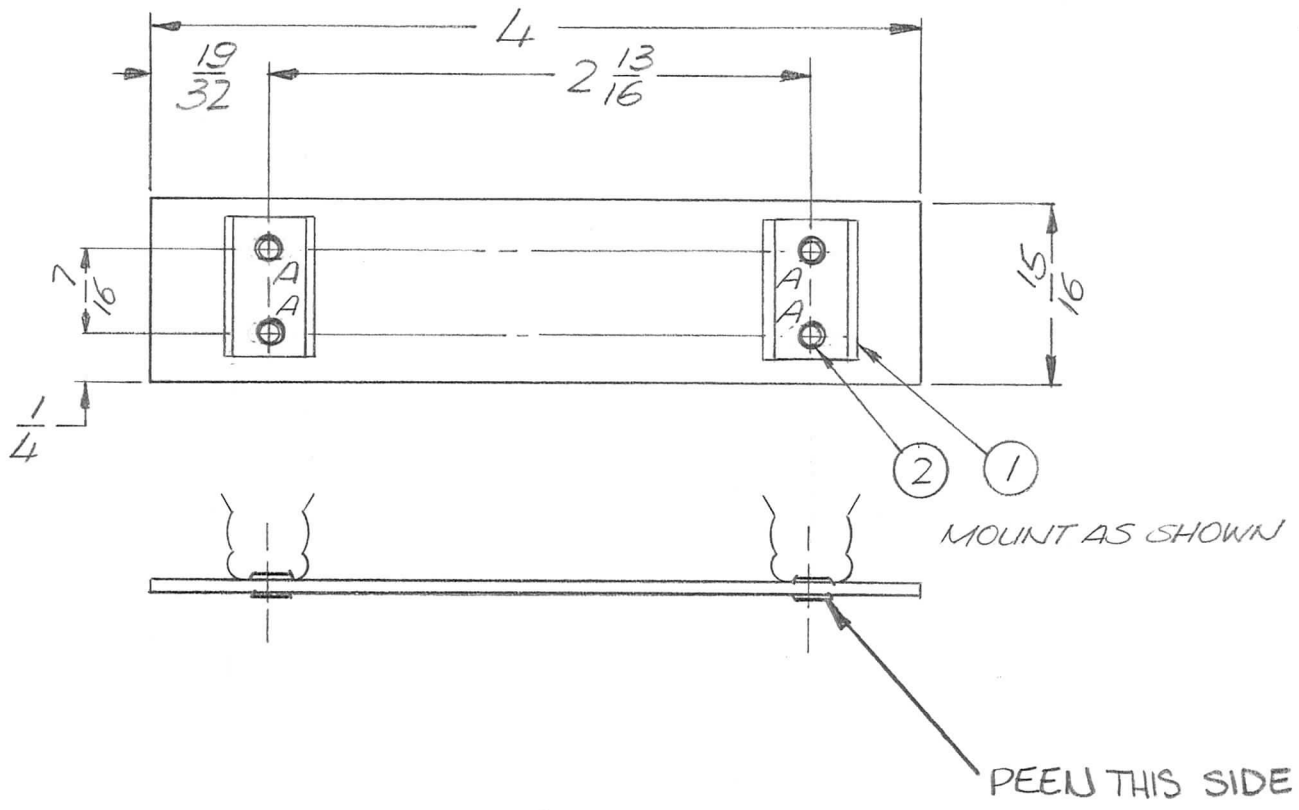
NOTICE TO PERSONS RECEIVING THIS DRAWING THE TECHNICAL MATERIEL CORPORATION claims proprietary right in the material disclosed hereon. This drawing is issued in confidence for engineering information only and may not be reproduced or used to manufacture anything shown hereon without permission from THE TECHNICAL MATERIEL CORPORATION to the user. This drawing is loaned for mutual assistance and is subject to recall at any time.	SIZE	CODE IDENT. NO.	DWG NO.	ISSUE
	A	82679	PX1182	Ø
SCALE 1:1		SHEET		OF

APPLICATION			REVISIONS						
QTY	MODEL USED ON	ASS'Y NO.	LTR	DESCRIPTION	DATE	E.M.N.NO	DRAFT	CHKD	APPD
2	TMA350		Ø	ORIGINAL RELEASE	10-20-72		ef		



UNLESS OTHERWISE SPECIFIED DIMENSIONS ARE IN INCHES AND INCLUDE CHEMICALLY APPLIED OR PLATED FINISHES	REQ'D	ITEM	PART NUMBER	DESCRIPTION	SYM.
	F.B. LIST OF MATERIAL				
DECIMALS .X ± .05 .XX ± .01 .XXX ± .005	FRACTIONS 1/64 ANGLES 0°-30'	FINAL APPROVAL		THE TECHNICAL MATERIEL CORP. MAMARONECK, NEW YORK	
MATERIAL 1/16 G11 EPOXY	MECH. DES.	DATE	STRAP COIL MTG.		
FINISH	ELECT. DES.	DATE			
	CHECKED	DATE			
	DRAWN GE	DATE 10/17/72			
NOTICE TO PERSONS RECEIVING THIS DRAWING THE TECHNICAL MATERIEL CORPORATION claims proprietary right in the material disclosed hereon. This drawing is issued in confidence for engineering information only and may not be reproduced or used to manufacture anything shown hereon without permission from THE TECHNICAL MATERIEL CORPORATION to the user. This drawing is loaned for mutual assistance and is subject to recall at any time.			SIZE A	CODE IDENT. NO. 82679	DWG NO. PX1183
			SCALE 1:1	SHEET 1 OF 1	
			ISSUE Ø		

APPLICATION			REVISIONS						
QTY	MODEL USED ON	ASS'Y NO.	LTR	DESCRIPTION	DATE	E.M.N.NO	DRAFT	CHKD	APPD
2	RSU-1		Ø	ORIG. RELEASE FOR PROD	1/4/73		C.		



HOLE A - .093 DIA. - 4 REQ.

REQ'D	ITEM	PART NUMBER	DESCRIPTION	SYM.
4	2	EY101-3	RIVET	
2	1	CUI33-3	CLIP, HEAT SINK	

UNLESS OTHERWISE SPECIFIED DIMENSIONS ARE IN INCHES AND INCLUDE CHEMICALLY APPLIED OR PLATED FINISHES		LIST OF MATERIAL		
DECIMALS: .X ± .05, .XX ± .01, .XXX ± .005		O. POSE		
FRACTIONS: 1/64, ANGLES: 0° - 30'		THE TECHNICAL MATERIEL CORP.		
MATERIAL: 1/16 G10		MAMARONECK, NEW YORK		
FINISH:		XFMR, SHIELD		
DRAWN: GE		DATE: 12/22/72		

NOTICE TO PERSONS RECEIVING THIS DRAWING				SIZE	CODE IDENT. NO.	DWG NO.	ISSUE
THE TECHNICAL MATERIEL CORPORATION claims proprietary right in the material disclosed hereon. This drawing is issued in confidence for engineering information only and may not be reproduced or used to manufacture anything shown hereon without permission from THE TECHNICAL MATERIEL CORPORATION to the user. This drawing is loaned for mutual assistance and is subject to recall at any time.				A	82679	PX 1185	Ø
				SCALE 1:1	SHEET		OF