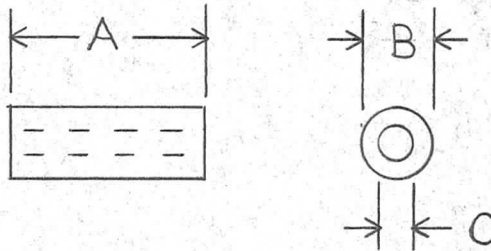


QTY	MODEL USED ON	ASS'Y NO.	LTR	DESCRIPTION	DATE	E.M.N.NO	DRAFT	CHKD	APPD
2	TLAAIK	A4909	Ø	ORIG RELEASE FOR PROD	1/3/72		CV		

TMC PART NO.	OVERALL DIM.			TYP. OF MATL.
	A	B	C	
PX 1175-1	.250	.187	.113	G-11 RESIN GLASS-EPOXY



UNLESS OTHERWISE SPECIFIED DIMENSIONS ARE IN INCHES AND INCLUDE CHEMICALLY APPLIED OR PLATED FINISHES		REQ'D	ITEM	PART NUMBER	DESCRIPTION	SYM.
DECIMALS: .X ± .05, .XX ± .01, .XXX ± .005 FRACTIONS: 1/64, ANGLES: 0° -30'		LIST OF MATERIAL				
MATERIAL	FINAL APPROVAL				<b>THE TECHNICAL MATERIEL CORP.</b> MAMARONECK, NEW YORK  SPACER NON-METALLIC	
FINISH	MECH. DES.			DATE 12-1-71		
	ELECT. DES.			DATE 12-1-71		
	CHECKED			DATE		
	DRAWN R. Trotter			DATE 11/29/71		

<b>NOTICE TO PERSONS RECEIVING THIS DRAWING</b> THE TECHNICAL MATERIEL CORPORATION claims proprietary right in the material disclosed hereon. This drawing is issued in confidence for engineering information only and may not be reproduced or used to manufacture anything shown hereon without permission from THE TECHNICAL MATERIEL CORPORATION to the user. This drawing is loaned for mutual assistance and is subject to recall at any time.	SIZE	CODE IDENT. NO.	DWG NO.	ISSUE
	A	82679	PX 1175	Ø
SCALE		SHEET		OF