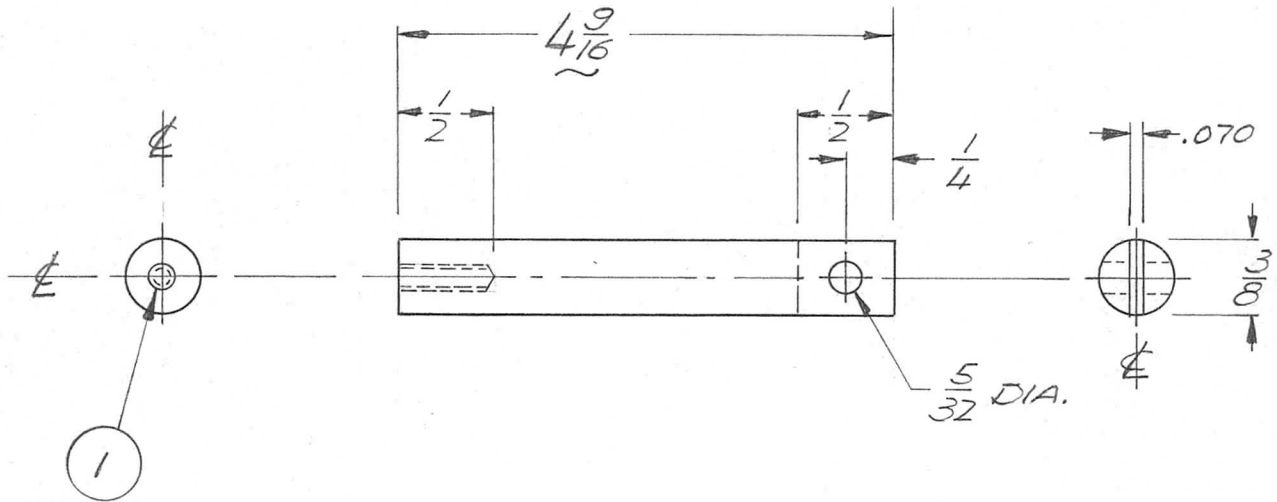


QTY	MODEL USED ON	ASS'Y NO.	LTR	DESCRIPTION	DATE	E.M.N.NO	DRAFT	CHKD	APPD
1	MAT-5	A4903	D	ORIG RELEASE FOR PROD	3/16/72		W		
			A.	DIM. 49/16 WAS 29/16	5.10.72	20678	GE	sp	sp



REQ'D	ITEM	PART NUMBER	DESCRIPTION	SYM.
1	1	NT139LC08-30	HELI COIL	

UNLESS OTHERWISE SPECIFIED DIMENSIONS ARE IN INCHES AND INCLUDE CHEMICALLY APPLIED OR PLATED FINISHES

F.B.

LIST OF MATERIAL

DECIMALS .X ± .05 .XX ± .01 .XXX ± .005
FRACTIONS 1/64 ANGLES 0° -30'

FINAL APPROVAL	DATE
MECH. DES.	DATE
ELECT. DES.	DATE
CHECKED	DATE
DRAWN	DATE

THE TECHNICAL MATERIEL CORP.
MAMARONECK, NEW YORK

MATERIAL G10 EPOXY

FINISH

SHAFT ACTUATOR

NOTICE TO PERSONS RECEIVING THIS DRAWING
THE TECHNICAL MATERIEL CORPORATION claims proprietary right in the material disclosed hereon. This drawing is issued in confidence for engineering information only and may not be reproduced or used to manufacture anything shown hereon without permission from THE TECHNICAL MATERIEL CORPORATION to the user. This drawing is loaned for mutual assistance and is subject to recall at any time.

SIZE	CODE IDENT. NO.	DWG NO.	ISSUE
A	82679	PX 1169	A
SCALE 1:1		SHEET OF	