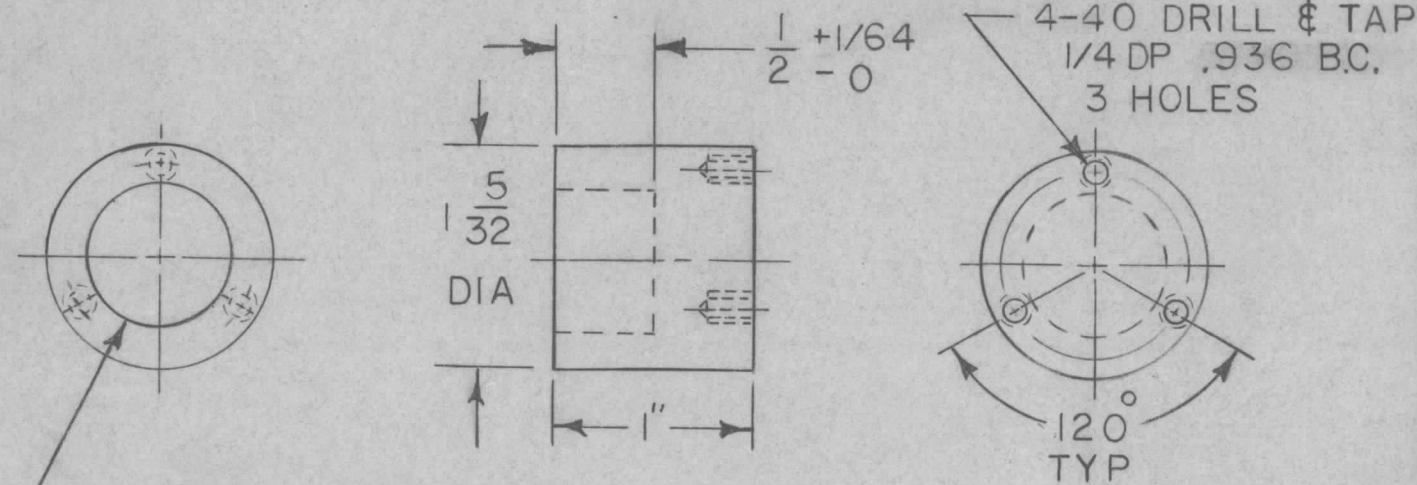


MATL: GII EPOXY

② STAKE



BORE FOR PRESS FIT OF ITEM 2 (SEE NOTE 1)

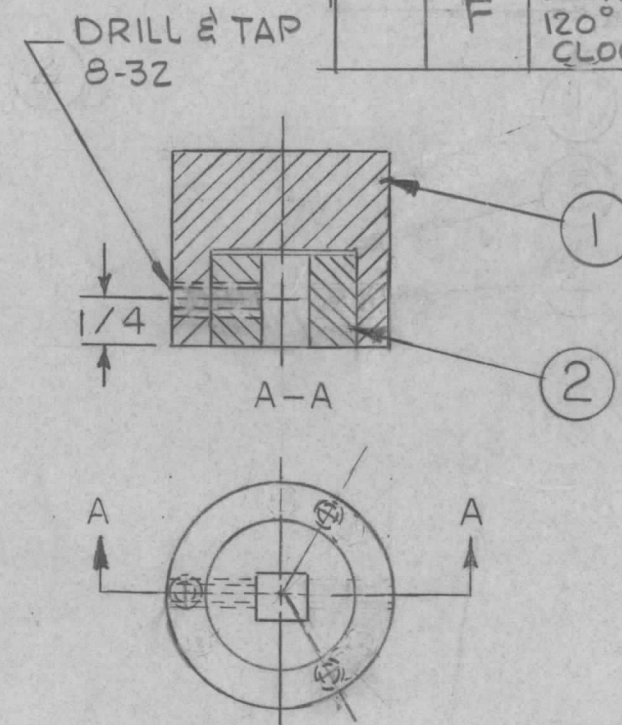
MATL: TEFLON

① HOUSING

I	TLAM-1K	AS-147
QTY / UNIT	MODEL USED ON	ASS'Y NO.
APPLICATION		
CODE		

NOTICE TO PERSONS RECEIVING THIS DRAWING  
 THE TECHNICAL MATERIEL CORPORATION claims proprietary right in the material disclosed hereon. This drawing is issued in confidence for engineering information only and may not be reproduced or used to manufacture anything shown hereon without permission from THE TECHNICAL MATERIEL CORPORATION to the user. This drawing is loaned for mutual assistance and is subject to recall at any time.

REVISIONS						
ZONE	LTR	DESCRIPTION	DATE	E.M.N.NO	DRAFT	CHKD APPD
	B	REVISED & REDRAWN	1-29-71	20212	RF	MR PEB
	C	CHG. QTY REQ IT. 4 TO 1	2/23/71	20252	GE	CV PEB
	D	CHG. IT. 3	6-22-71	20397	RF	CV PEB
	E	REVISED & UPDATED	3-7-74	21143	GDL	Ch an
	F	ON THE ASSY, HOLES AT 120° ROTATED 30° CLOCK WISE	4-23-75	21247	GDL	Ch PEB



NOTES:

1, ITEM 2 TO BE PRESS FITTED INTO ITEM 1.

1	2	STAKE	
1	1	HOUSING	
REQ'D ITEM	PART NUMBER	DESCRIPTION	SYM.

F. BUDETTI

LIST OF MATERIAL

FINAL APPROVAL	DATE
MECH. DES.	DATE
ELECT. DES.	DATE
CHECKED	DATE
DRAWN	DATE

THE TECHNICAL MATERIEL CORP.  
MAMARONECK, NEW YORK

HUB, ROTOR, (INS)  
DETAIL & ASSY.

SIZE	CODE IDENT. NO.	DWG NO.	ISSUE
B	82679	PX-1152	

SCALE 1/1 SHEET 1 OF