

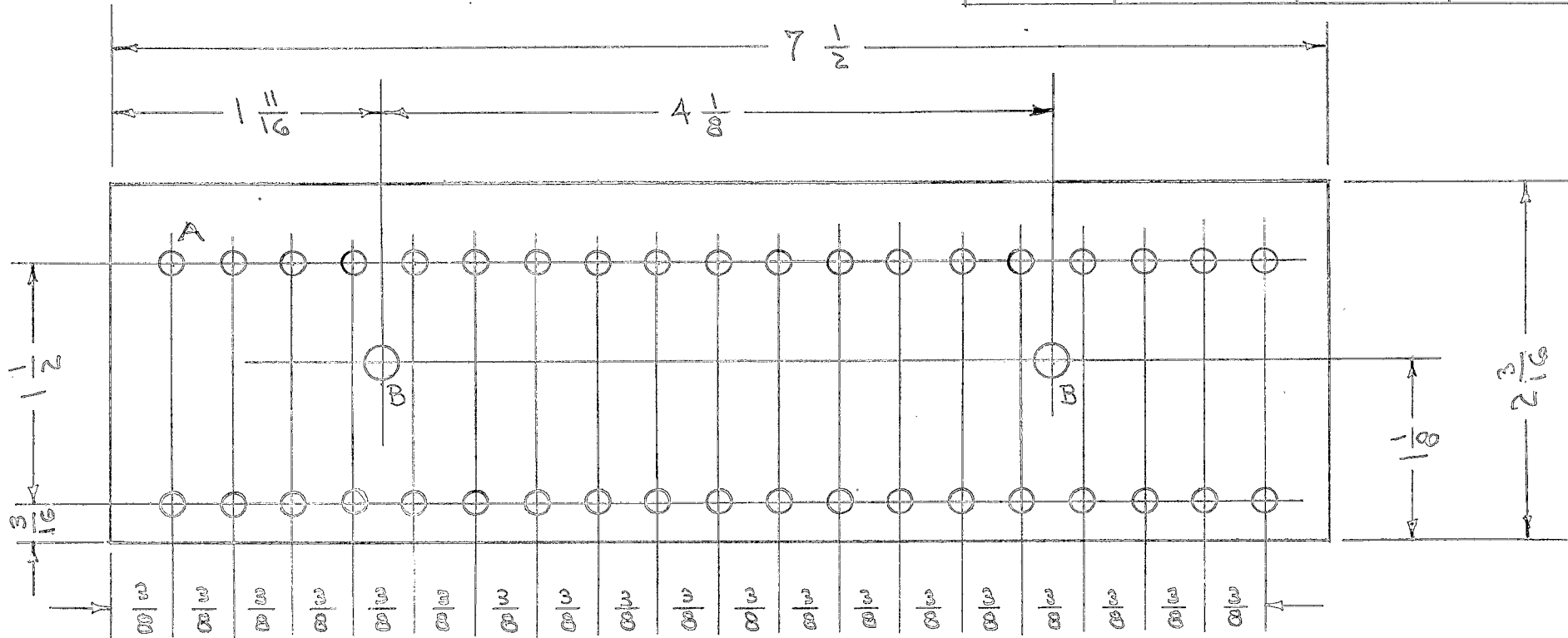
IF IT IS FOUND DESIRABLE TO CHANGE ANY TOLERANCE OR OTHER DETAIL SPECIFIED ON THIS DRAWING NOTIFY THE PURCHASER PROMPTLY.

PX-181 D

MAXIMUM ALLOWABLE TOLERANCES HAVE BEEN DETERMINED AND DEVIATIONS WILL BE CAUSE FOR REJECTION. REMOVE ALL BURRS AND SHARP EDGES

USED ON

MODEL	PROJECT NO.	ASS'Y. NO.	DATE
RSM-2	170	A-559	10-2-53



A- NO. 32(.116) DRILL 38 HOLES REQ.
 B- NO. 12(.189) DRILL 2 HOLES REQ.

REQ.	ITEM	PART NO.	DESCRIPTION	SYMBOL
		1/8	THE TECHNICAL MATERIEL CORP. MAMARONECK, NEW YORK	
		STOCK SIZE		
		PHENOLIC	BOARD, TERMINAL	
		MATERIAL	RSM-2	
		WEIGHT PER PC.	C.D.D. 10-2-53 P.L. K. 10-5-53	
		XXXP LAMINATE		
		TYPE & TEMPER		
		HEAT TREAT. SPEC.	DRAWN	ELEC. DES. APP. MECH. DES. APP.
		FINISH & SPEC. NO.	CHECKED	FINAL APPROVAL
			SUPERCEDES	PX-181 D
			RSM-1	

ISSUE	ITEM	CHANGED FROM	DATE	CN. NO.	DRAFTS	CHECKER	ENG. APP.
D	1	NO. 32 DRILL WAS 2.9MM.	11/2/53	4			
C	1	3/16 WAS 1/4	2/28/53	3			
B	1	23/16 WAS 2/4	11/20/53	2			
A	2	2.9MM WAS NO. 33					
	1	WAS RSM-1		1			

TOLERANCES	SCALE
ALL OTHERS DEC. DIM. ± FRAC. DIM. ± ANGULAR DIM. ±	1/8"
DRILL, PUNCH, COMMERCIAL STOCK SIZES AND MANUFACTURERS TOLERANCES ARE NOT INCLUDED.	