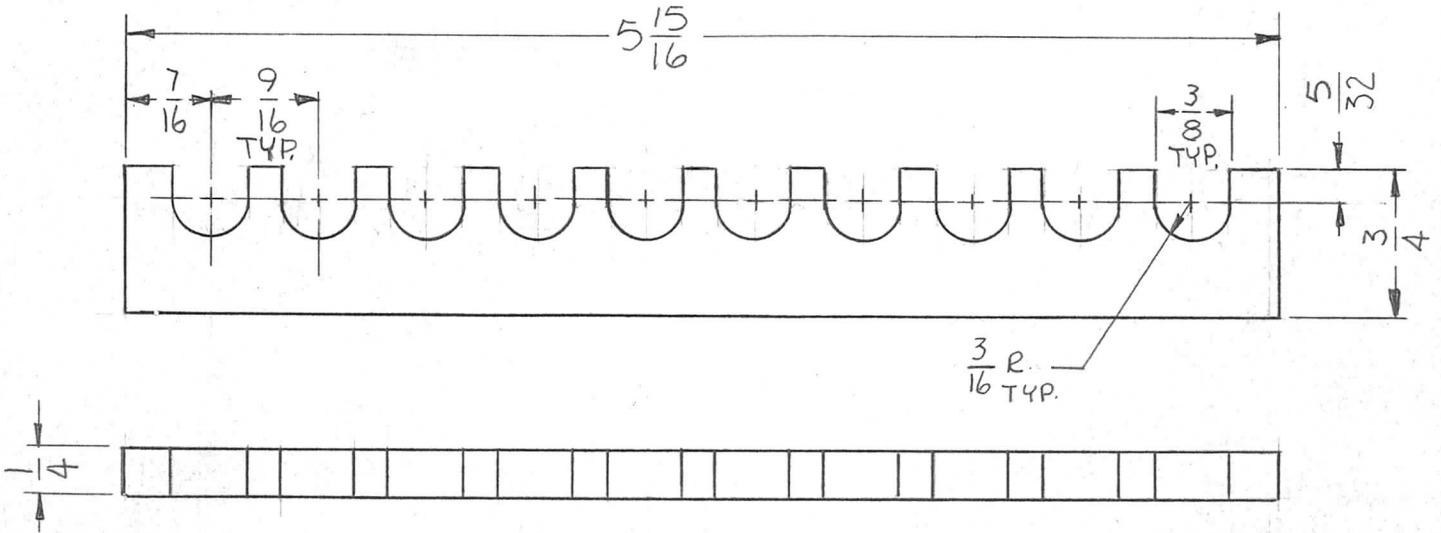


APPLICATION			REVISIONS						
QTY	MODEL USED ON	ASS'Y NO.	LTR	DESCRIPTION	DATE	E.M.N.NO	DRAFT	CHKD	APPD
3	PALA-10K	AX5084	Ø	ORIGINAL RELEASE	1/20/70		W		
			A.	1/4 WAS 1/8 (MATL THK)	6/21/72	20752	GE	EJ	EJ



UNLESS OTHERWISE SPECIFIED DIMENSIONS ARE IN INCHES AND INCLUDE CHEMICALLY APPLIED OR PLATED FINISHES		REQ'D	ITEM	PART NUMBER	DESCRIPTION	SYM.
DECIMALS: .X ± .05, .XX ± .01, .XXX ± .005 FRACTIONS: 1/64, ANGLES: 0°-30° TOLS.		<b>F. BUDETTI</b> <b>LIST OF MATERIAL</b> <b>THE TECHNICAL MATERIEL CORP.</b> <b>MAMARONECK, NEW YORK</b> <b>SPACER, COIL</b>				
<b>MATERIAL</b> <b>1/4 THICK TEFLON</b> <b>FINISH</b>		FINAL APPROVAL <i>[Signature]</i>	DATE 1-19-70			
		MECH. DES. <i>[Signature]</i>	DATE			
		ELECT. DES.	DATE			
		CHECKED	DATE			
		DRAWN <i>[Signature]</i>	DATE 8-14-69			

<b>NOTICE TO PERSONS RECEIVING THIS DRAWING</b> THE TECHNICAL MATERIEL CORPORATION claims proprietary right in the material disclosed hereon. This drawing is issued in confidence for engineering information only and may not be reproduced or used to manufacture anything shown hereon without permission from THE TECHNICAL MATERIEL CORPORATION to the user. This drawing is loaned for mutual assistance and is subject to recall at any time.				SIZE <b>A</b>	CODE IDENT. NO. <b>82679</b>	DWG NO. <b>PX1092</b>	ISSUE <b>A</b>
SCALE		SHEET		OF			