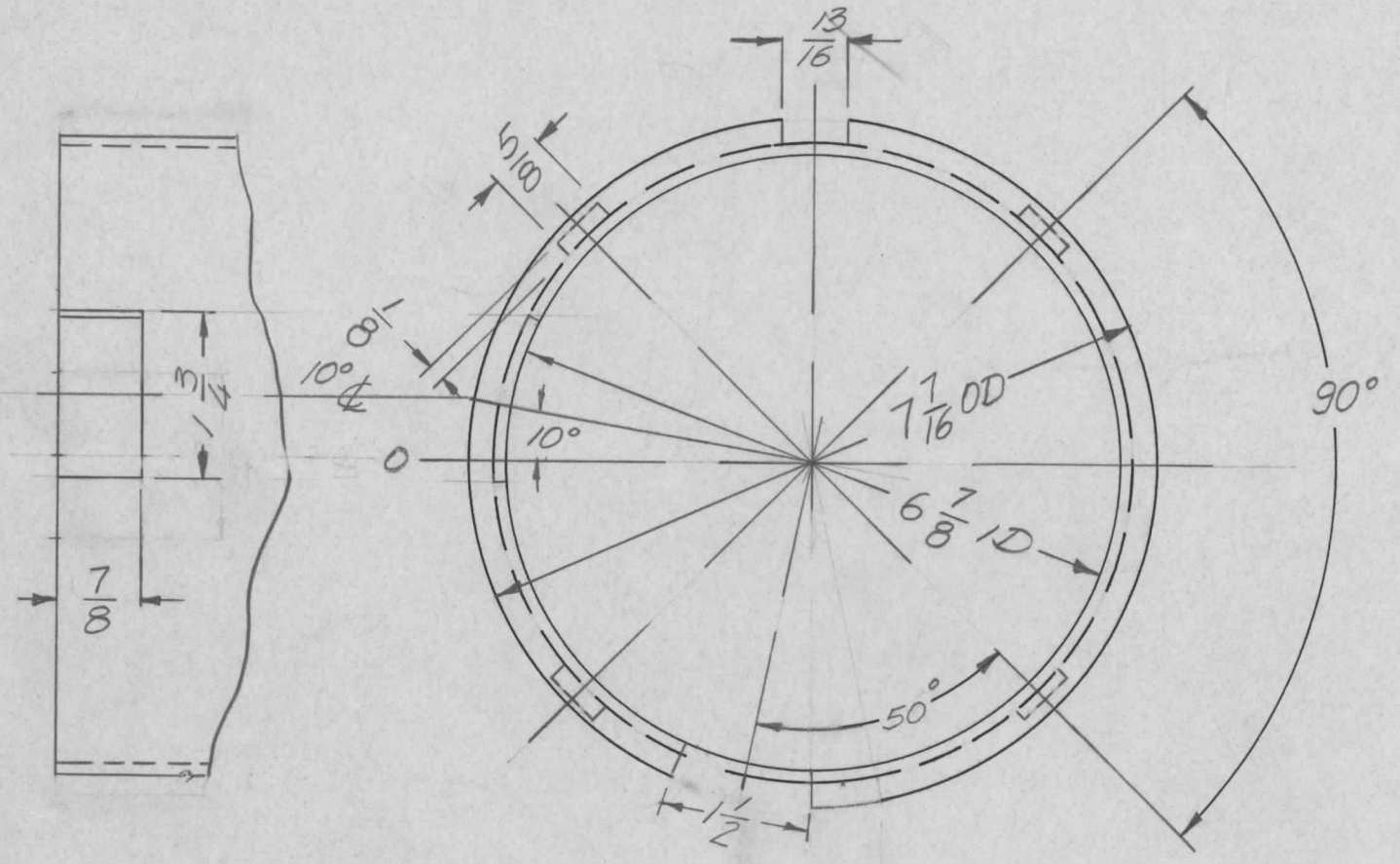
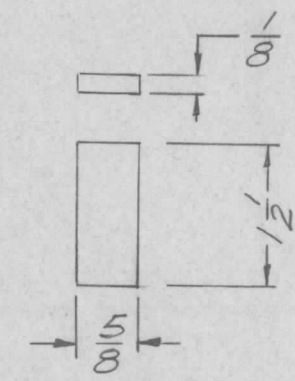


REVISIONS						
ZONE	LTR	DESCRIPTION	DATE	E.M.N.NO	DRAFT	CHKD APPD
	X	EXP RELEASE	12/69		GE	
	Ø	ORIGINAL RELEASE	1/30/70		W	
	A	ADD OBSOLETE NOTE	4/6/72	20580	GE	EG EG

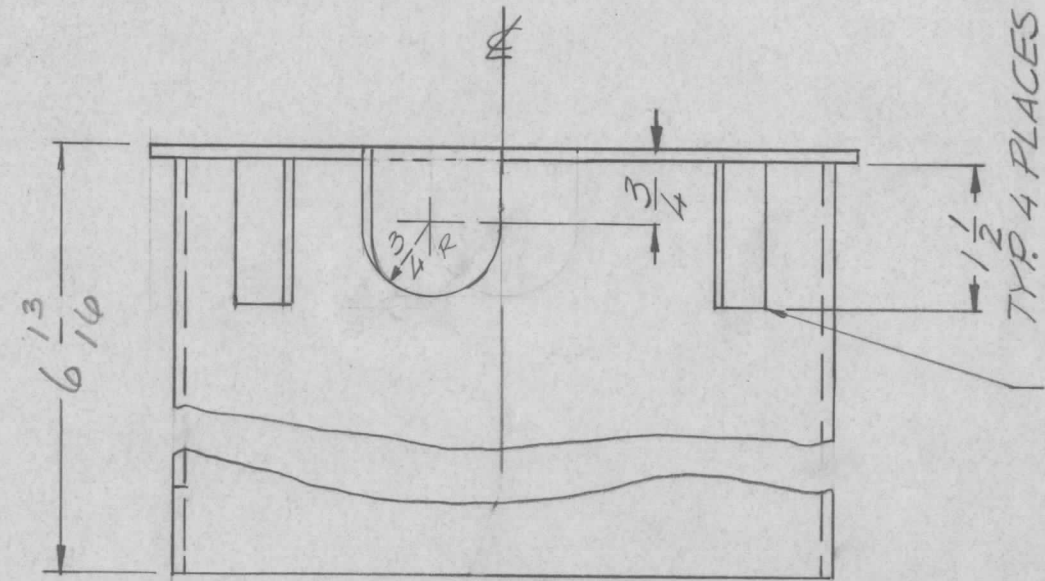


**OBSOLETE**

REPLACED BY PX1177 USE FOR PALA-10K & HFLA-10K WITH 8794 FINAL AMP SPARE PARTS ONLY.



DETAIL A



ATTACH DETAIL A WITH EPOXY ADHESIVE

REQ'D	ITEM	PART NUMBER	DESCRIPTION	SYM.	
F. BUDETTI LIST OF MATERIAL					
FINAL APPROVAL	DATE	THE TECHNICAL MATERIEL CORP. MAMARONECK, NEW YORK			
MECH. DES.	DATE	FLUE, TOP, INNER			
ELECT. DES.	DATE				
CHECKED	DATE				
DRAWN	DATE				
MATERIAL 3PLY FIBER GLASS		SIZE	CODE IDENT. NO.	DWG NO.	ISSUE
FINISH \$115 TMC GRAY		B	82679	PX 1079	A
SCALE			SHEET	OF	

QTY / UNIT	MODEL USED ON	ASS'Y NO.
1	PALA-10K	AX 5084
APPLICATION		
	CODE	
NOTICE TO PERSONS RECEIVING THIS DRAWING THE TECHNICAL MATERIEL CORPORATION claims proprietary right in the material disclosed hereon. This drawing is issued in confidence for engineering information only and may not be reproduced or used to manufacture anything shown hereon without permission from THE TECHNICAL MATERIEL CORPORATION to the user. This drawing is loaned for mutual assistance and is subject to recall at any time.		

UNLESS OTHERWISE SPECIFIED DIMENSIONS ARE IN INCHES AND INCLUDE CHEMICALLY APPLIED OR PLATED FINISHES

DECIMALS .X ± .05 .XX ± .01 .XXX ± .005

FRACTIONS 1/64

TOLS. ANGLES 0° -30'