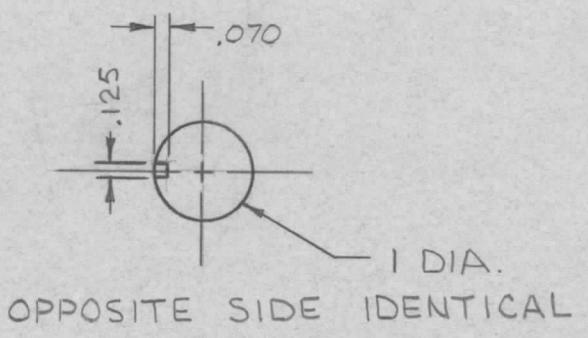
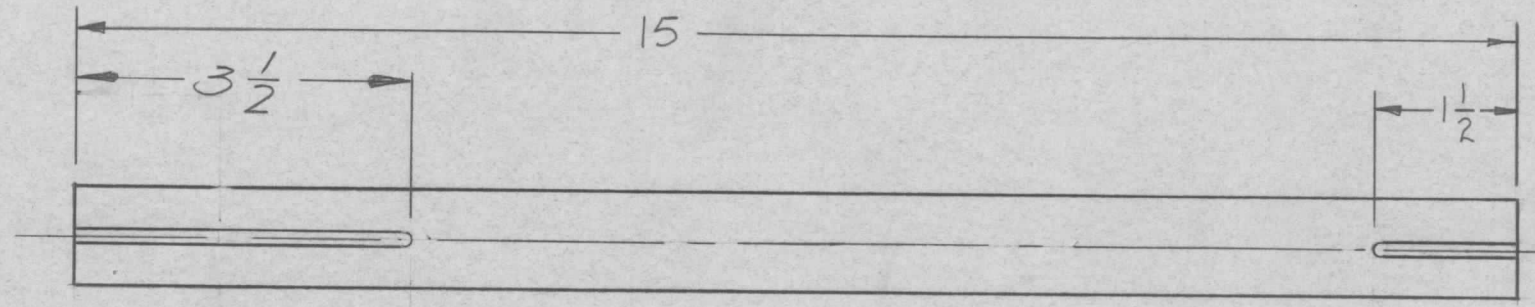


REVISIONS						
ZONE	LTR	DESCRIPTION	DATE	E.M.N.NO	DRAFT	CHKD APPD
	0	ORIGINAL RELEASE	1/14/70		0	
	A	3 1/2 SLT. WAS 1/2 SHOW RAD.	4/19/72	20596	GE	EL EL



1	PALA-10K	AS145
QTY / UNIT	MODEL USED ON	ASS'Y NO.

APPLICATION	
CODE	

NOTICE TO PERSONS RECEIVING THIS DRAWING
 THE TECHNICAL MATERIEL CORPORATION claims proprietary right in the material disclosed hereon. This drawing is issued in confidence for engineering information only and may not be reproduced or used to manufacture anything shown hereon without permission from THE TECHNICAL MATERIEL CORPORATION to the user. This drawing is loaned for mutual assistance and is subject to recall at any time.

UNLESS OTHERWISE SPECIFIED DIMENSIONS ARE IN INCHES AND INCLUDE CHEMICALLY APPLIED OR PLATED FINISHES

DECIMALS	FRACTIONS
.X ± .05	TOLS. 1/64
.XX ± .01	ANGLES
.XXX ± .005	0° -30'

MATERIAL
SILICONE GLASS
G-7

FINISH
NATURAL

REQ'D	ITEM	PART NUMBER	DESCRIPTION	SYM.
F. BUDETTI LIST OF MATERIAL				
FINAL APPROVAL		DATE	THE TECHNICAL MATERIEL CORP. MAMARONECK, NEW YORK	
MECH. DES.		DATE		
ELECT. DES.		DATE		
CHECKED		DATE		
DRAWN		DATE	SHAFT, MAIN RF BAND SW	
SCALE		DATE		
SIZE	CODE IDENT. NO.	DWG NO.	ISSUE	
B	82679	PX1070	A	
SHEET			OF	