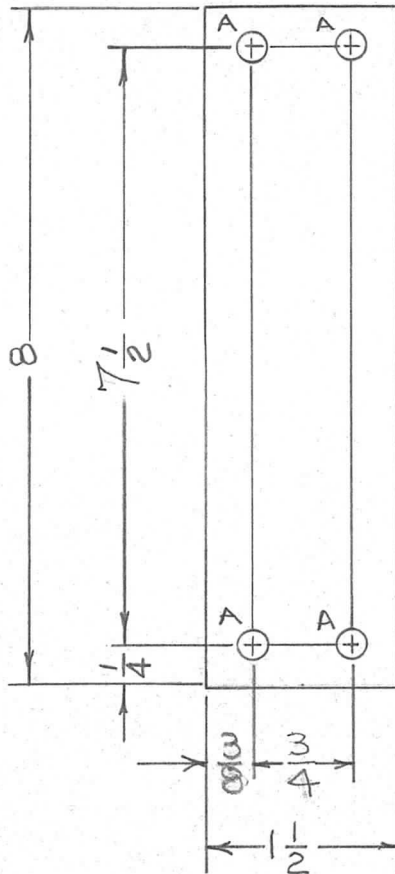


APPLICATION

REVISIONS

QTY	MODEL USED ON	ASS'Y NO.	LTR	DESCRIPTION	DATE	E.M.N.NO	DRAFT	CHKD	APPD
1	BCTIOKA	AX681	X	EXP. RELEASE	9-23-68		A.P.		
			Ø	ORIG. RELEASE FOR PROD.	9-26-68	Ø	R.G.		<i>J.We</i>



HOLE	DESCRIPTION	REQ.
A	15/64 DIA.	4

MARK TMC PART NUMBER  
1/8 HIGH GOTHIC WITH LATEST  
REVISION LETTER ON REAR

UNLESS OTHERWISE SPECIFIED DIMENSIONS ARE IN INCHES AND INCLUDE CHEMICALLY APPLIED OR PLATED FINISHES	REQ'D	ITEM	PART NUMBER	DESCRIPTION	SYM.								
<table border="0"> <tr> <td>DECIMALS</td> <td>FRACTIONS</td> </tr> <tr> <td>.X ± .05</td> <td>1/64</td> </tr> <tr> <td>.XX ± .01</td> <td>TOLS. ANGLES</td> </tr> <tr> <td>.XXX ± .005</td> <td>0° -30'</td> </tr> </table>	DECIMALS	FRACTIONS	.X ± .05	1/64	.XX ± .01	TOLS. ANGLES	.XXX ± .005	0° -30'	<b>LIST OF MATERIAL</b>				
DECIMALS	FRACTIONS												
.X ± .05	1/64												
.XX ± .01	TOLS. ANGLES												
.XXX ± .005	0° -30'												
MATERIAL <b>XXXXP</b> <b>1/4 PHENOLIC</b>	F. BUDETTI		<b>THE TECHNICAL MATERIEL CORP.</b> MAMARONECK, NEW YORK  <b>INSULATOR</b> (AC. INPUT)										
FINISH <b>NATURAL</b>	FINAL APPROVAL <i>[Signature]</i>	DATE <b>9-68</b>											
	MECH. DES. <i>[Signature]</i>	DATE <b>9-68</b>											
	ELECT. DES. <i>[Signature]</i>	DATE <b>9/24/68</b>											
	CHECKED <i>[Signature]</i>	DATE <b>9/24/68</b>											
	DRAWN <b>A. PETROCCA</b>	DATE <b>9-68</b>	SIZE <b>A</b>	CODE IDENT. NO. <b>82679</b>	DWG NO. <b>PX 1060</b>								
NOTICE TO PERSONS RECEIVING THIS DRAWING THE TECHNICAL MATERIEL CORPORATION claims proprietary right in the material disclosed hereon. This drawing is issued in confidence for engineering information only and may not be reproduced or used to manufacture anything shown hereon without permission from THE TECHNICAL MATERIEL CORPORATION to the user. This drawing is loaned for mutual assistance and is subject to recall at any time.				ISSUE <b>Ø</b>									
SCALE			SHEET		OF								