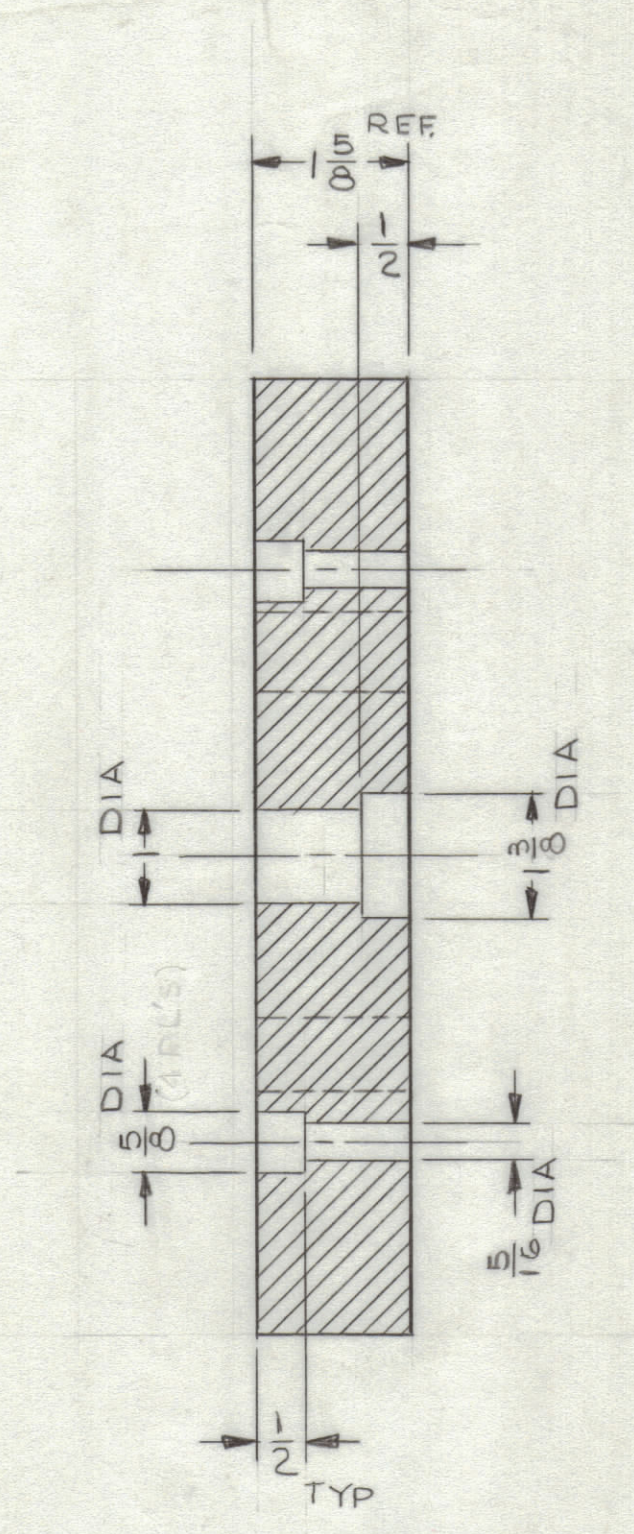
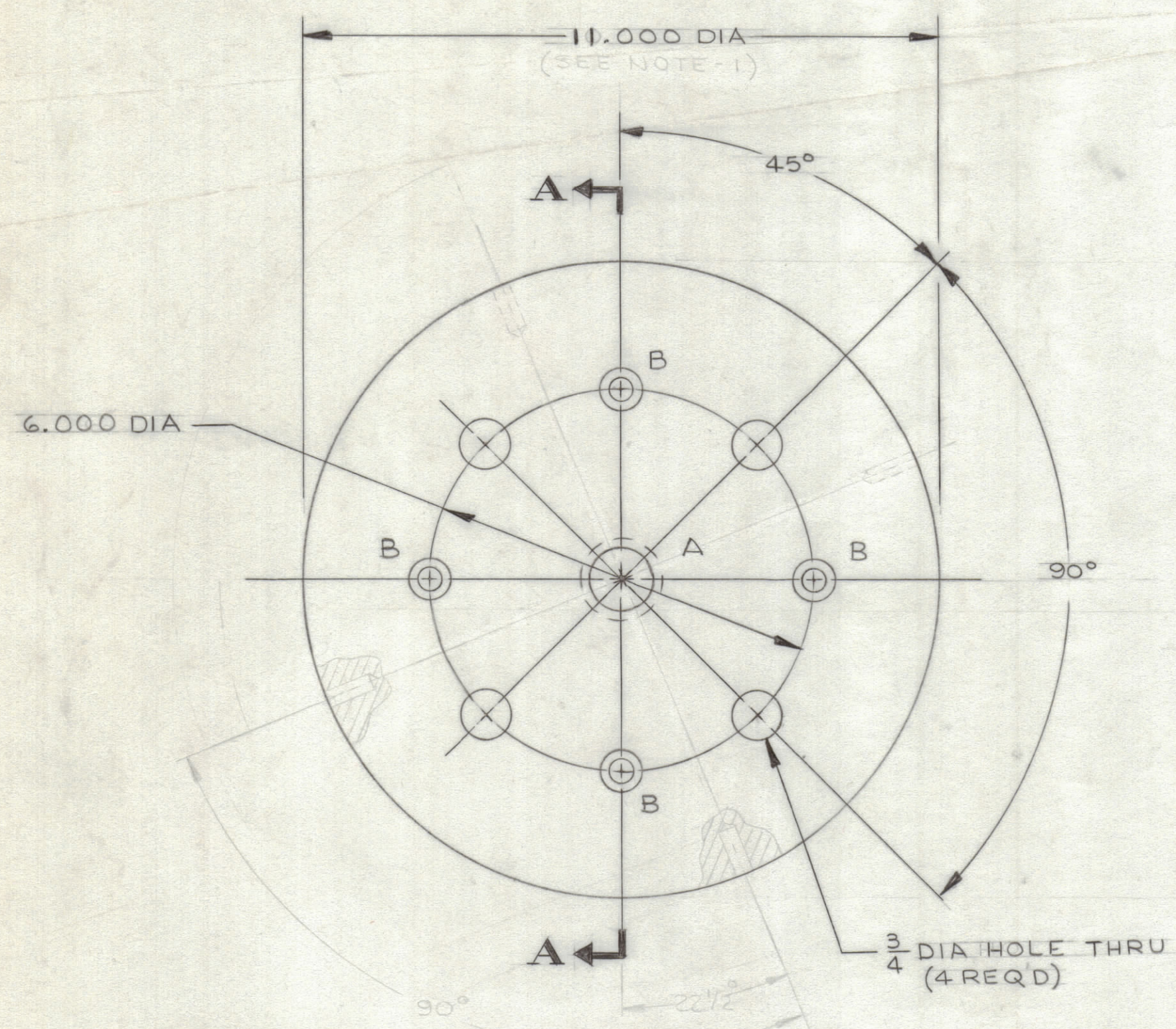


REVISIONS						
ZONE	LTR	DESCRIPTION	DATE	E.M.N.NO	DRAFT	CHKD APPD
	X1	REVISED COMPLETELY	6/17/68		JL	
	X2	10.000 To 11.000	6/22/68			
	Ø	ORIG. RELEASE FOR PROD.	11/1/68	Ø	R.G.	



SECTION A-A

HOLE	DESCRIPTION	REQ.
A	SEE SECTION A-A	1
B	SEE SECTION A-A	4

NOTES:  
 I-DIAMETER TO FIT INSIDE 10.000 INSIDE DIAMETER OF ANTENNA TRUNK PER DWG SK3231-000-5, TIGHTLY.

1/4 (.2500) DRILL X 3/4 DEEP (4 REQ'D)

1	ΔWTA-1	PX1056
QTY / UNIT	MODEL USED ON	ASS'Y NO.
APPLICATION		
CODE		

NOTICE TO PERSONS RECEIVING THIS DRAWING  
 THE TECHNICAL MATERIEL CORPORATION claims proprietary right in the material disclosed herein. This drawing is issued in confidence for engineering information only and may not be reproduced or used to manufacture anything shown herein without permission from THE TECHNICAL MATERIEL CORPORATION to the user. This drawing is loaned for mutual assistance and is subject to recall at any time.

UNLESS OTHERWISE SPECIFIED DIMENSIONS ARE IN INCHES AND INCLUDE CHEMICALLY APPLIED OR PLATED FINISHES

TOLERANCES ON  
 DECIMALS .X ± .05  
 .XX ± .01  
 .XXX ± .005  
 FRACTIONS ± 1/64  
 ANGLES ± 0° -30'

MATERIAL 1 5/8 THICK EPOXY FIBERGLASS G-10 1 5/8 THK COLOR-GRN  
 FINISH

QTY. REQ.	ITEM	PART NO.	DESCRIPTION	SYMBOL
LIST OF MATERIAL SK3291-000-7				
FINAL APPROVAL		DATE	<b>THE TECHNICAL MATERIEL CORP.</b> MAMARONECK, NEW YORK  <b>PLATFORM MTG - ANTENNA</b>	
MECH. DES. <i>M. ZEJENA</i>		DATE		
ELECT. DES.		DATE		
CHECKED <i>JALDe</i>		DATE 10/28/68		
DRAWN J. LESHINSKI		DATE 5/16/68		
SIZE	CODE	IDENT. NO.	DWG NO.	ISSUE
C		82679	PX1057 000-7	Ø
SCALE 1/2		SHEET		OF