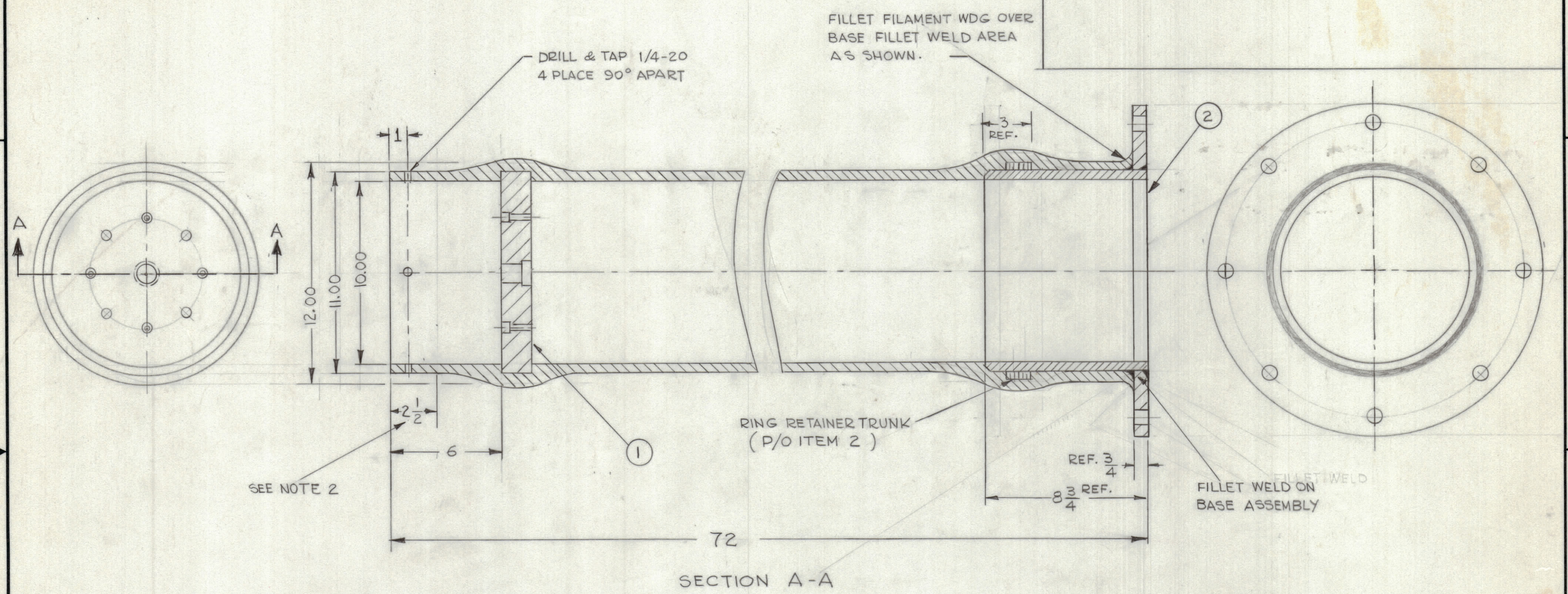


REVISIONS						
ZONE	LTR	DESCRIPTION	DATE	E.M.N.NO	DRAFT	CHKD APPD
	X4	COMPLETELY REVISED	6-20-68			My
	X5	1/4-20 WAS 12-24	6-20-68			
	Ø	ORIG. RELEASE FOR PROD.	11/1/68	Ø	R.G.	



NOTES :

1- ITEMS 1 & 2 TO BE FILAMENT WOUND INTO TUBING AS SHOWN.

2 - GRIND OR TURN TO 11.000

3- FINISH : NON CONDUCTIVE WHITE EPOXY PAINT. WOOLSEY MFP EPOXY COATING #450 WHITE, CURING AGENT #444 CURE 6 HRS @ 60°-80° F (TWO COATS)

1	AWTA -1	A4746
QTY / UNIT	MODEL USED ON	ASS'Y NO.
APPLICATION		
CODE		

NOTICE TO PERSONS RECEIVING THIS DRAWING

THE TECHNICAL MATERIEL CORPORATION claims proprietary right in the material disclosed hereon. This drawing is issued in confidence for engineering information only and may not be reproduced or used to manufacture anything shown hereon without permission from THE TECHNICAL MATERIEL CORPORATION to the user. This drawing is loaned for mutual assistance and is subject to recall at any time.

UNLESS OTHERWISE SPECIFIED DIMENSIONS ARE IN INCHES AND INCLUDE CHEMICALLY APPLIED OR PLATED FINISHES

TOLERANCES ON

DECIMALS	FRACTIONS
.X ± .05	± 1/64
.XX ± .01	ANGLES
.XXX ± .005	± 0° -30'

MATERIAL FILAMENT WOUND GLASS (EPOXY)  
10" ID 11" OD .500 WALL

FINISH  
SEE NOTE No. 3

1	2	A 4742	BASE WELDING ASSY.
1	1	PX 1057	PLATFORM MTG - ANTENNA
QTY. REQ.	ITEM	PART NO.	DESCRIPTION
LIST OF MATERIAL SK 3291 - 000 - 1			
FINAL APPROVAL			
MECH. DES.		DATE	
ELECT. DES.		DATE	
CHECKED		DATE	
DRAWN		DATE	
THE TECHNICAL MATERIEL CORP. MAMARONECK, NEW YORK			TRUNK, ANTENNA
SIZE	CODE IDENT.NO.	DWG NO.	
C	82679	PX 1056	ISSUE
SCALE 1:4			SHEET OF