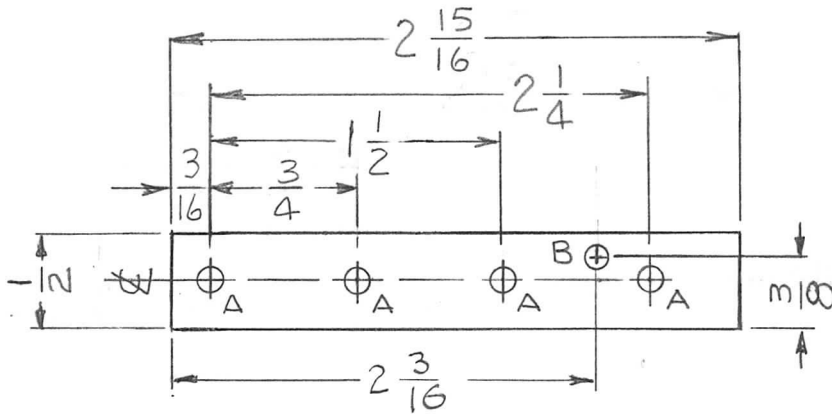


APPLICATION			REVISIONS						
QTY	MODEL USED ON	ASS'Y NO.	LTR	DESCRIPTION	DATE	E.M.N.NO	DRAFT	CHKD	APPD
2	BCT-10KA	A4651	X	EXP. RELEASE	1-2-68	-	H.S.		
			X1	ONE "B" HOLE ADD.	4-4-68		G.D.L.		
			Ø	ORIG. RELEASE FOR PROD.	4-5-68	Ø	R.G.		



HOLES:
 A - 1/8 DIA. (4 REQ)
 B - 7/64 DIA (1 REQ.)

NOTE:
 FUNGUS PROOFING PER
 TMC SPECIFICATION S-113

UNLESS OTHERWISE SPECIFIED DIMENSIONS ARE IN INCHES AND INCLUDE CHEMICALLY APPLIED OR PLATED FINISHES		REQ'D	ITEM	PART NUMBER	DESCRIPTION	SYM.
DECIMALS .X ± .05 .XX ± .01 .XXX ± .005 FRACTIONS 1/64 ANGLES 0° - 30° TOLS.		F. BUDETTI LIST OF MATERIAL THE TECHNICAL MATERIEL CORP. MAMARONECK, NEW YORK SUPPORT, LAMP				
MATERIAL 1/8 THICK XXXP PHENOLIC FINISH SEE NOTE S 401-451		FINAL APPROVAL <i>[Signature]</i>	MECH. DES. <i>[Signature]</i>	ELECT. DES. <i>[Signature]</i>	CHECKED <i>[Signature]</i>	DRAWN <i>[Signature]</i>
		DATE	DATE	DATE	DATE	DATE
				4-5-68	1-2-68	
NOTICE TO PERSONS RECEIVING THIS DRAWING THE TECHNICAL MATERIEL CORPORATION claims proprietary right in the material disclosed hereon. This drawing is issued in confidence for engineering information only and may not be reproduced or used to manufacture anything shown hereon without permission from THE TECHNICAL MATERIEL CORPORATION to the user. This drawing is loaned for mutual assistance and is subject to recall at any time.					SIZE A	CODE IDENT. NO. 82679
					DWG NO. PX 1047	ISSUE Ø
SCALE			SHEET		OF	