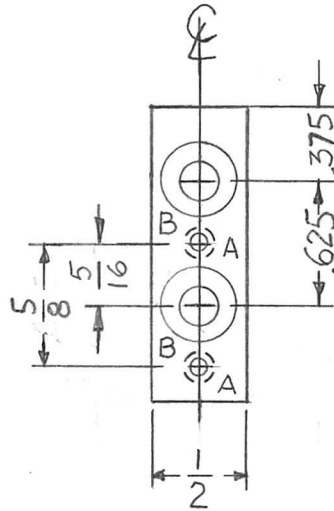
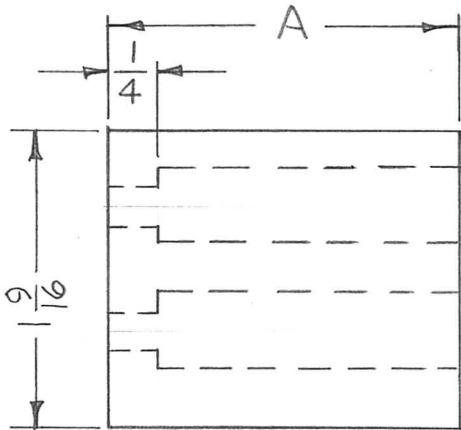


APPLICATION			REVISIONS						
QTY	MODEL USED ON	ASS'Y NO.	LTR	DESCRIPTION	DATE	E.M.N.NO	DRAFT	CHKD	APPD
SEE CHART	GPT-40KEL		X	EXP. RELEASE	11-2-67		HY		
			Ø	ORIG. RELEASE FOR PROD.	7/11/69		GE		



TMC PART NO	A	REQ
PX1039 -1	.790	2
PX1039 -2	1.400	1

HOLE	DESCRIPTION	REQ
A	DR & TAP FOR 6-32	2
B	DR 3/16 DIA. C'BORE 3/8 DIA	2

UNLESS OTHERWISE SPECIFIED DIMENSIONS ARE IN INCHES AND INCLUDE CHEMICALLY APPLIED OR PLATED FINISHES		REQ'D	ITEM	PART NUMBER	DESCRIPTION	SYM.
DECIMALS .X ± .05 .XX ± .01 .XXX ± .005		F. BUDETTI		LIST OF MATERIAL		
FRACTIONS 1/64 ANGLES 0° - 30°		TOLS.		THE TECHNICAL MATERIEL CORP. MAMARONECK, NEW YORK		
MATERIAL G-10 EPOXY		FINAL APPROVAL	DATE	HOLDER CONTACT		
FINISH NATURAL S113 FUNGUS PROOF		MECH. DES.	DATE			
S401-451		ELECT. DES.	DATE			
		CHECKED	DATE			
		DRAWN	DATE			

<p><b>NOTICE TO PERSONS RECEIVING THIS DRAWING</b>            THE TECHNICAL MATERIEL CORPORATION claims proprietary right in the material disclosed hereon. This drawing is issued in confidence for engineering information only and may not be reproduced or used to manufacture anything shown hereon without permission from THE TECHNICAL MATERIEL CORPORATION to the user. This drawing is loaned for mutual assistance and is subject to recall at any time.</p>				SIZE A	CODE IDENT. NO. 82679	DWG NO. PX1039	ISSUE Ø
SCALE 1:1		SHEET		OF			