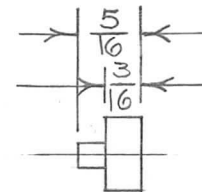
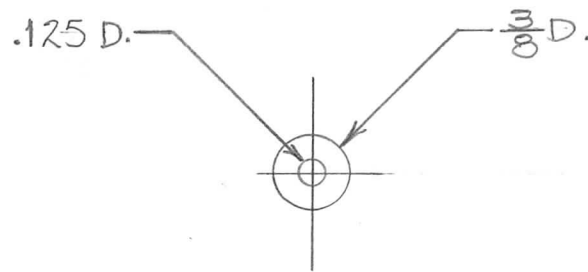


| | | | | |
|---------------|----------|------------|--------|---------------------|
| REQ. PER UNIT | USED ON | | | PX 1037 \emptyset |
| | MODEL | ASS'Y. NO. | DATE | |
| 6 | BCT-10KA | AX680 | 8-8-67 | |



| REQ. | ITEM | PART NO. | BUDETTI | DESCRIPTION | SYMBOL | |
|---|---------------------------------|---|-----------------|--|-------------------|---------------------|
| | | 3/8 ROD | | THE TECHNICAL MATERIEL CORP. MAMARONECK, NEW YORK | | |
| \emptyset | ORIGINAL RELEASE FOR PRODUCTION | 4/1/68 | \emptyset HS. | | | |
| X | EXP. RELEASE | 1/9/68 | # | TEFLON | SPACER, FLUE | |
| SYM | DESCRIPTION | DATE | CH. NO. | DRAFTS | CHECKER | ENG. APP. |
| UNLESS OTHERWISE SPECIFIED DIMENSIONS ARE IN INCHES AND INCLUDE CHEMICALLY APPLIED OR PLATED FINISHES | | SCALE | 1:1 | | | |
| DECIMALS .X \pm .05 .XX \pm .01 .XXX \pm .005 | TOLERANCES | FRACTIONS \pm 1/64 ANGLES \pm 0° 30' | CODE A | S 401-451 | | |
| | | | | TYPE & TEMPER | HEAT TREAT. SPEC. | FINISH & SPEC. NO. |
| | | | | TFE | | NATURAL |
| | | | | A. PETROCCA | | |
| | | | | DRAWN | CHECKED | ELEC. DES. APP. |
| | | | | | | MECH. DES. APP. |
| | | | | | | PX 1037 \emptyset |