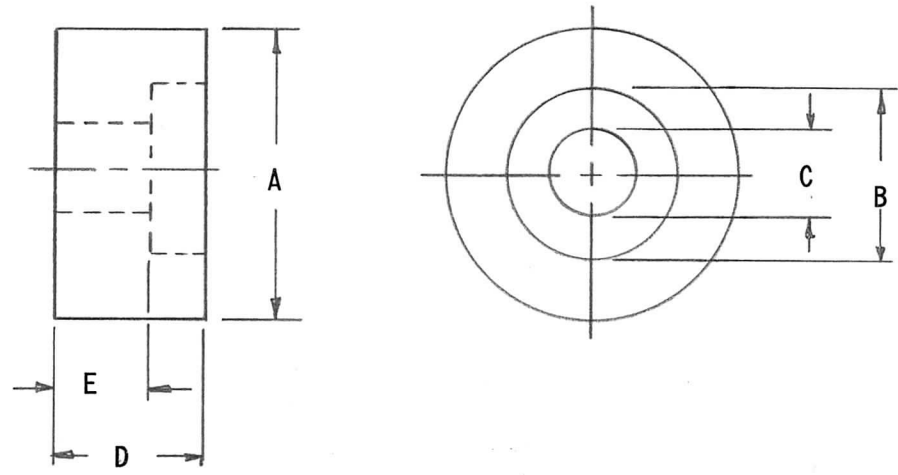


APPLICATION			REVISIONS						
QTY	MODEL USED ON	ASS'Y NO.	LTR	DESCRIPTION	DATE	E.M.N.NO	DRAFT	CHKD	APPD
6	BCT-10KA		X1	CHART ADDED	11-22-67	+	Hg.		DB
			Ø	ORIGINAL RELEASE FOR PRODUCTION	4/1/68	Ø	Hg.		JMO

TMC P/N	A	B	C	D	E	MATERIAL	FINISH
PX1028-1	3/4	7/16	7/32	.390	.250	G-10 EPOXY	NATURAL, S113 FUNGUS PROOF



UNLESS OTHERWISE SPECIFIED DIMENSIONS ARE IN INCHES AND INCLUDE CHEMICALLY APPLIED OR PLATED FINISHES		REQ'D	ITEM	PART NUMBER	DESCRIPTION	SYM.
DECIMALS .X ± .05 .XX ± .01 .XXX ± .005		F. BUDETTI		LIST OF MATERIAL	SK3290-PX 051	
FRACTIONS 1/64 TOLS. ANGLES 0° .30'		FINAL APPROVAL	DATE	THE TECHNICAL MATERIEL CORP.		
MATERIAL G-10 SEE CHART		MECH. DES.	DATE	MAMARONECK, NEW YORK		
FINISH NATURAL SEE CHART		ELECT. DES.	DATE	INSULATOR		
S401-451		CHECKED	DATE			
		DRAWN	DATE			

NOTICE TO PERSONS RECEIVING THIS DRAWING THE TECHNICAL MATERIEL CORPORATION claims proprietary right in the material disclosed hereon. This drawing is issued in confidence for engineering information only and may not be reproduced or used to manufacture anything shown hereon without permission from THE TECHNICAL MATERIEL CORPORATION to the user. This drawing is loaned for mutual assistance and is subject to recall at any time.				SIZE A	CODE IDENT. NO. 82679	DWG NO. PX1028	ISSUE Ø
SCALE 2:1		SHEET		OF			