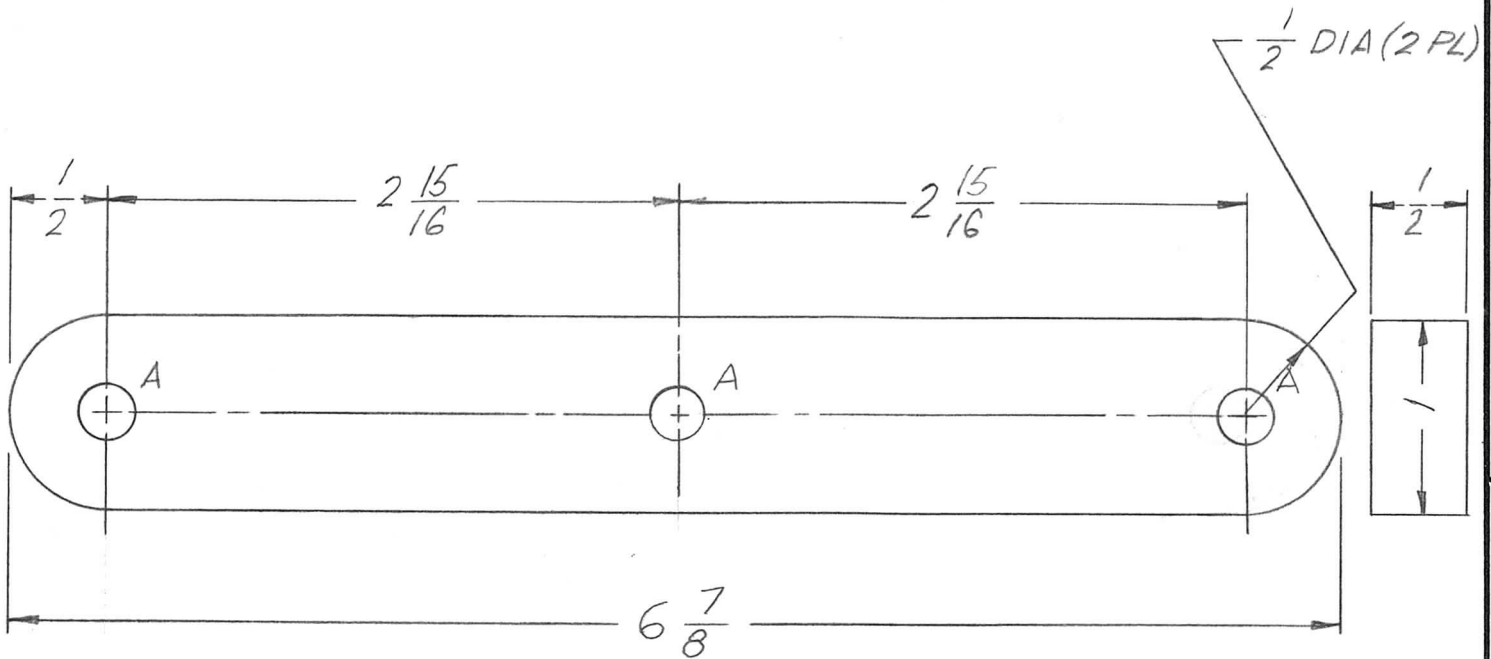


APPLICATION			REVISIONS						
QTY	MODEL USED ON	ASS'Y NO.	LTR	DESCRIPTION	DATE	E.M.N.NO	DRAFT	CHKD	APPD
2	LPFA-40K		X	EXP RELEASE	2/21/67	W	LHW	JLW	QJG
			Ø	ORIGINAL RELEASE FOR PRODUCTION	3/3/67	Ø	CV		



- HOLE ~
A - 9/32 DIA (3 REQ)

UNLESS OTHERWISE SPECIFIED DIMENSIONS ARE IN INCHES AND INCLUDE CHEMICALLY APPLIED OR PLATED FINISHES		REQ'D	ITEM	PART NUMBER	DESCRIPTION	SYM.
DECIMALS .X ± .05 .XX ± .01 .XXX ± .005		F. BUDETTI		LIST OF MATERIAL		
FRACTIONS 1/64 ANGLES 0° - 30'		MECH. DES. <i>[Signature]</i>		THE TECHNICAL MATERIEL CORP.		
MATERIAL G11 EPOXY		ELECT. DES.		MAMARONECK, NEW YORK		
FINISH S113 FUNGUS PROOF.		CHECKED		SUPPORT BAR, FILTER ASS'Y		
		DRAWN <i>LHW</i>		DATE 2.21.67		
NOTICE TO PERSONS RECEIVING THIS DRAWING THE TECHNICAL MATERIEL CORPORATION claims proprietary right in the material disclosed hereon. This drawing is issued in confidence for engineering information only and may not be reproduced or used to manufacture anything shown hereon without permission from THE TECHNICAL MATERIEL CORPORATION to the user. This drawing is loaned for mutual assistance and is subject to recall at any time.				SIZE A	CODE IDENT. NO. 82679	DWG NO. PX1013
				SCALE 1:1	ISSUE Ø	
				SHEET 1 OF 1		