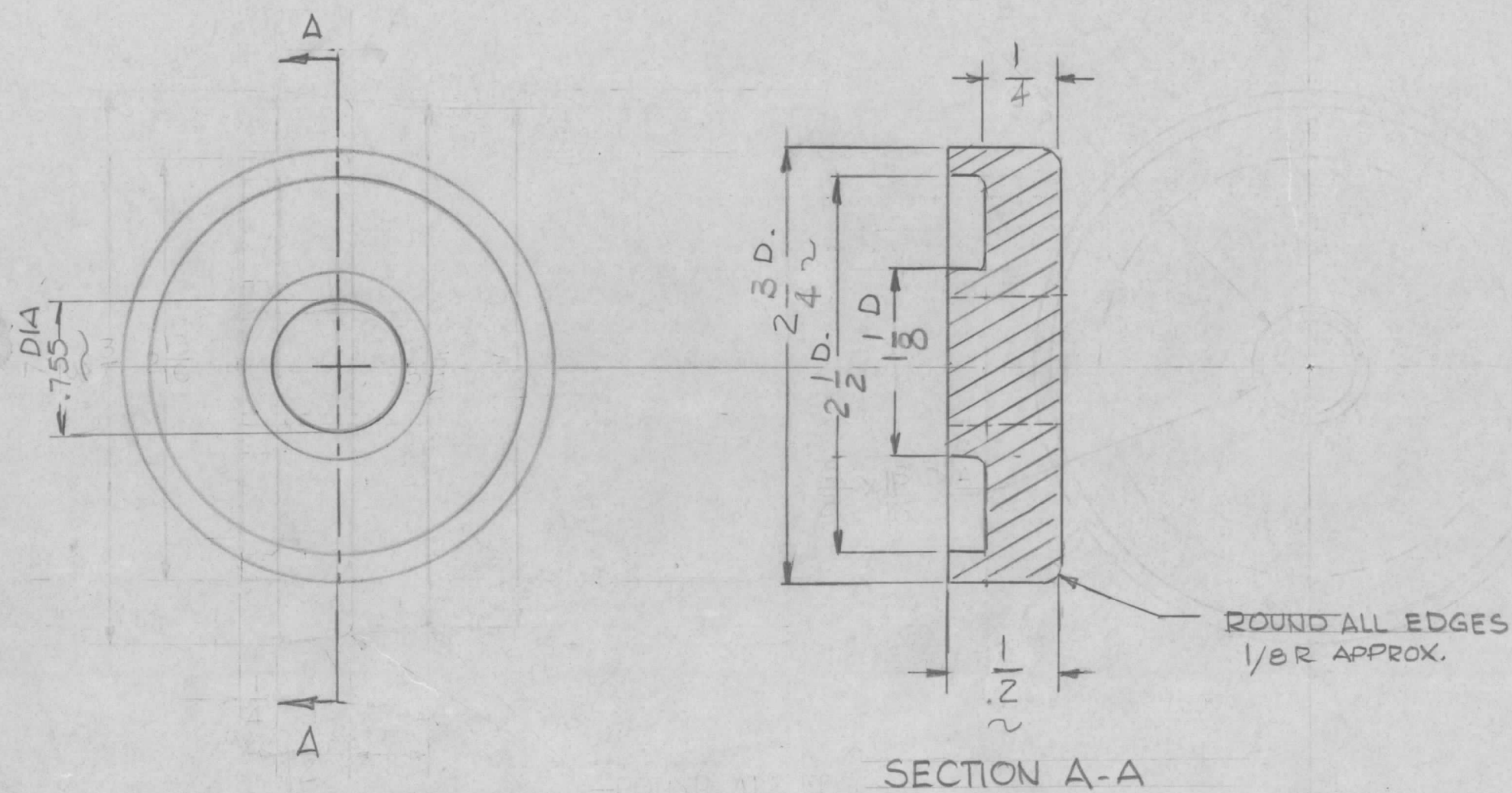


REVISIONS							
E.M.N. NO.	DRAFT	CHKD	ZONE	LTR	DESCRIPTION	DATE	APPROVED
	G.D.L.			Ø	ORIGINAL RELEASE FOR PROD.	1-3-90	
	G.D.L.			A	MATERIAL WAS COLD ROLL STEEL DIMENSIONS .755, 2 3/4, 3/4 & 1/4 WERE CHANGED	4-25-90	<i>[Signature]</i>



SECTION A-A

REQ'D	ITEM	PART NUMBER	DESCRIPTION	SYM.		
LIST OF MATERIAL						
FINAL APPROVAL <i>[Signature]</i>		DATE 1/15/90	THE TECHNICAL MATERIEL CORP. MAMARONECK, NEW YORK TOP & BOTTOM INSULATOR			
MECH. DES.		DATE				
ELECT. DES.		DATE				
CHECKED		DATE				
DRAWN G.D.L.		DATE 8-25-88	SIZE B	CODE IDENT. NO. 82679	DWG NO. PO 350	ISSUE A
SCALE 1:1			SHEET OF			

2	AA104	AB106
QTY / UNIT	MODEL USED ON	ASS'Y NO.
APPLICATION		
CODE		
<small>NOTICE TO PERSONS RECEIVING THIS DRAWING</small> THE TECHNICAL MATERIEL CORPORATION claims proprietary right in the material disclosed hereon. This drawing is issued in confidence for engineering information only and may not be reproduced or used to manufacture anything shown hereon without permission from THE TECHNICAL MATERIEL CORPORATION to the user. This drawing is loaned for mutual assistance and is subject to recall at any time.		

UNLESS OTHERWISE SPECIFIED DIMENSIONS ARE IN INCHES AND INCLUDE CHEMICALLY APPLIED OR PLATED FINISHES	
DECIMALS .X ± .05 .XX ± .01 .XXX ± .005	FRACTIONS TOLS. 1/64 ANGLES 0° -30'
MATERIAL STAINLESS STEEL	FINISH NICKEL PLATE